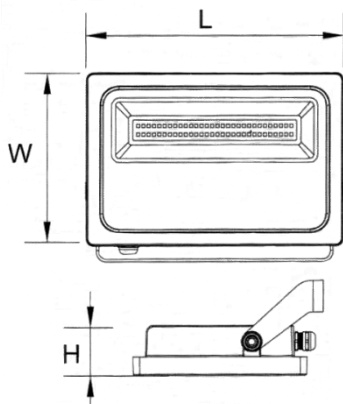




**Dimensiones (mm)**

**Largo (L): 260; Ancho (W): 230**  
**Alto (H): 60.**



**Código**

**ACUA-I-100W-5K**

**Descripción**

Luminaria tipo reflector, diseñada con módulos de LED. Para anclar en piso, poste o muro por medio del sujetador ubicado en la parte trasera. Compuesta en la parte interna por una pantalla en aluminio semi-especular y un difusor en vidrio templado.




**Materiales y acabado**

Cuerpo y disipador en aluminio inyectado. Sujetador fabricado en lámina de hierro. Todas las piezas con acabado en pintura poliéster electrostática en polvo.

**Color**

Gris Oscuro.

**Características técnicas**

<b>LED</b>	 112°	 50,000h	<b>IP 65</b>	<b>IK 08</b>
<b>PF 0,99</b>	<b>THD &lt;15%</b>	<b>°C 0-55</b>	<b>V 90-265</b>	

**Fuente de luz**

Módulos de LED.

Potencia Nominal	CRI	K	Lm / W	Lm de Salida
100W	>80	5000	91	9103

**Características de fuente de luz**

- Colores temperatura disponible 5000K (luz día).
- Chip de LED con salida de alto rendimiento.
- Potencia de Salida: 100,5W.

Nota: Debido a continua investigación, nos reservamos el derecho de cambiar especificaciones sin previa notificación.



Light efficiency:



Light quality:



Color temperature:



Output: 9103 lm

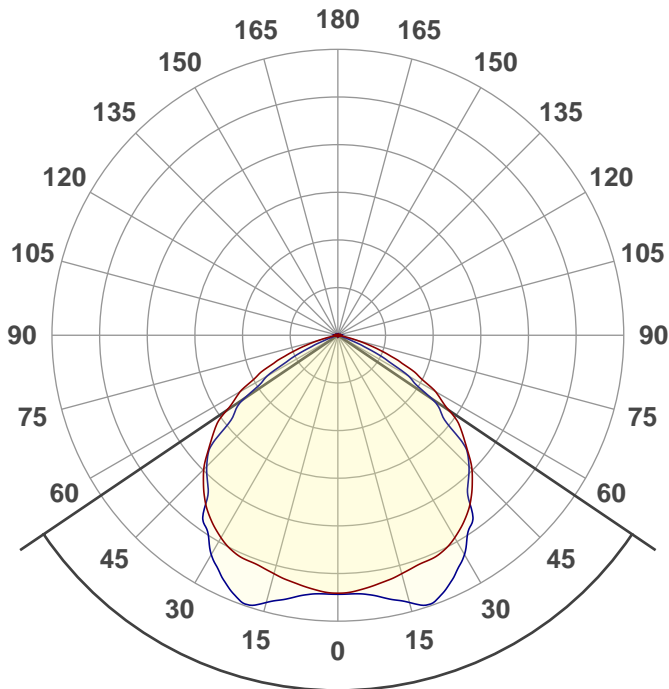
Peak: 3541 cd

Power: 100,5 W

PF: 0,99



Product name:  
E0450-ACUA-I-100W-5K



Beam angle **111,9°**



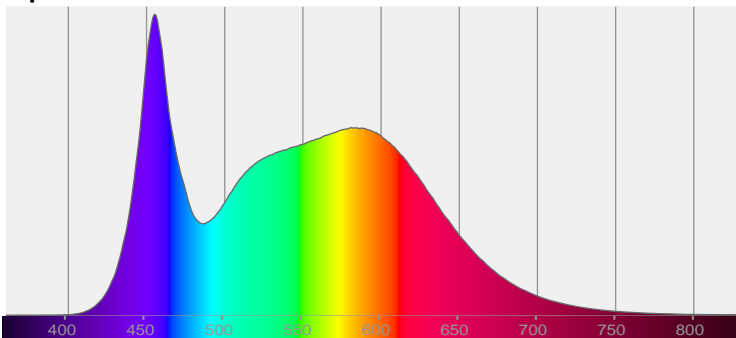
CIE 1931  
x: 0,337  
y: 0,348

THD Values:

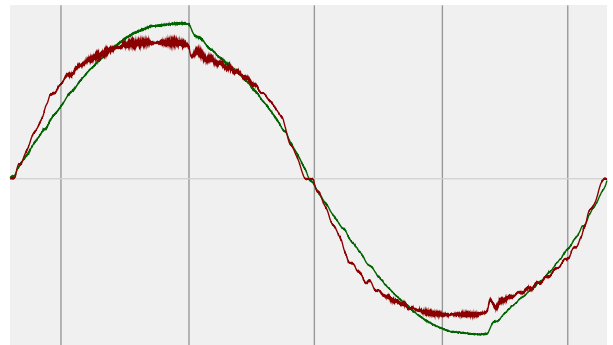
Voltage: 2,36%

Current: 10,68%

Spectra



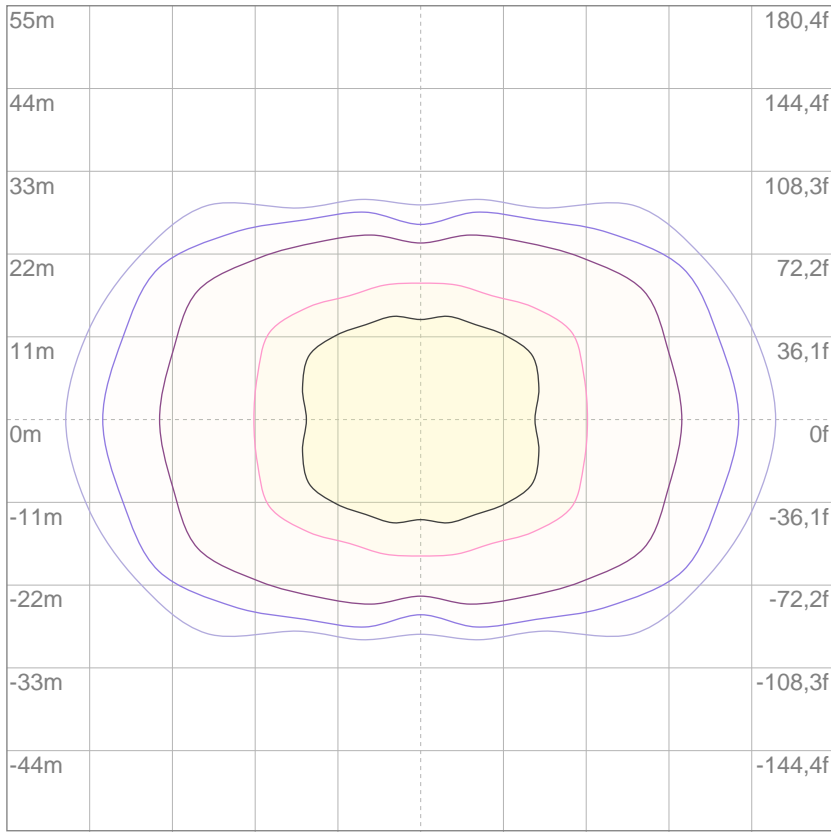
Power



Voltage: 117 V  
Current: 0,869 A  
Frequency: 60 Hz

# ISO Diagrams

## ISO lux diagram



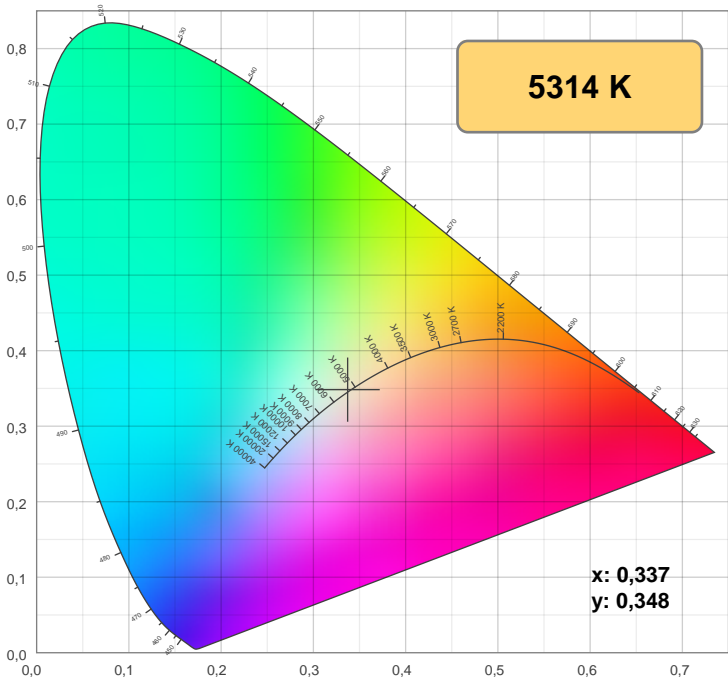
3%	0,965 lx
5%	1,61 lx
10%	3,22 lx
30%	9,65 lx
50%	16,1 lx

**Conditions:**  
 Number of c-planes: 12  
 Lux at center: 32,2 lx

*Lux distribution on a surface when lamp is mounted at 10 meters from the surface.*

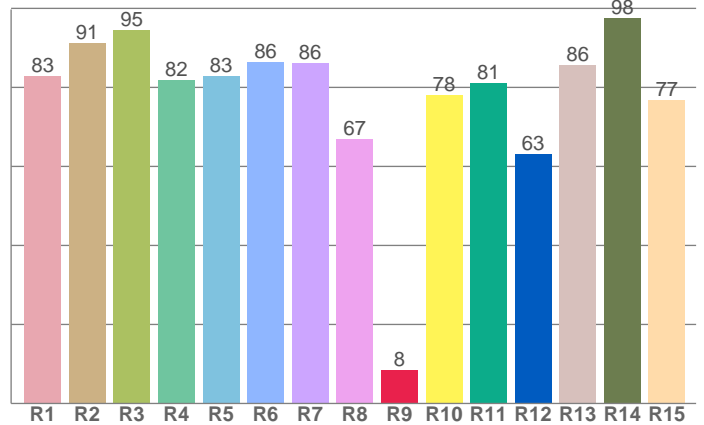
Mounting height: 10 meters (33 f)

## Color details



CIE 1931

CRI: 84,1 (R1-R8)



CRI R values, only R1-R8 are used to calculate final CRI value

R1	R2	R3	R4	R5	R6	R7	R8	R9	R10	R11	R12	R13	R14	R15
82,8	91,3	94,6	82,0	82,8	86,3	86,1	66,8	8,5	78,0	81,1	63,2	85,7	97,6	76,9

## Color parameters

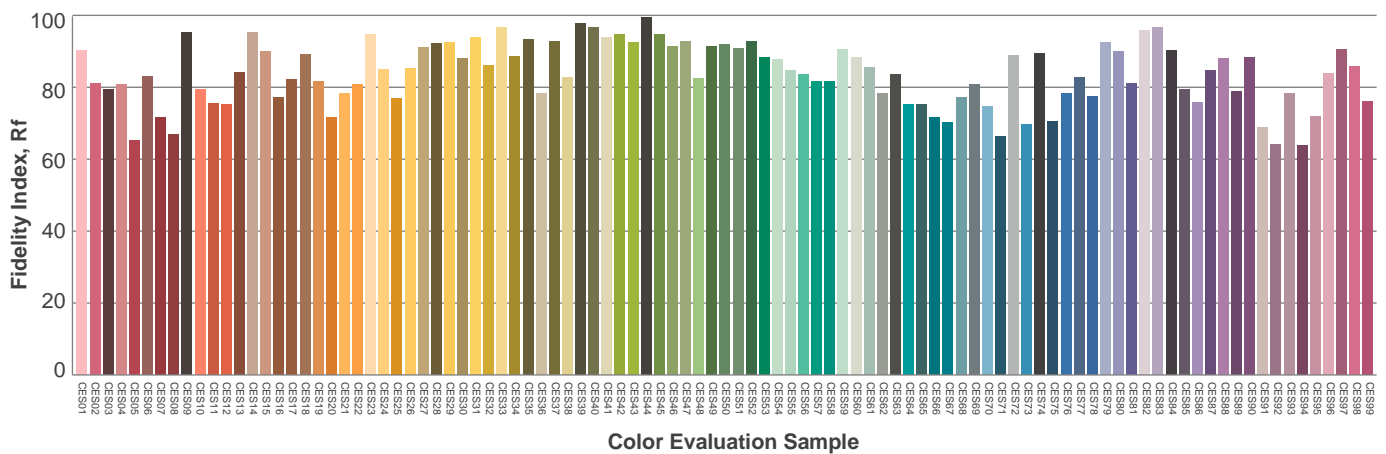
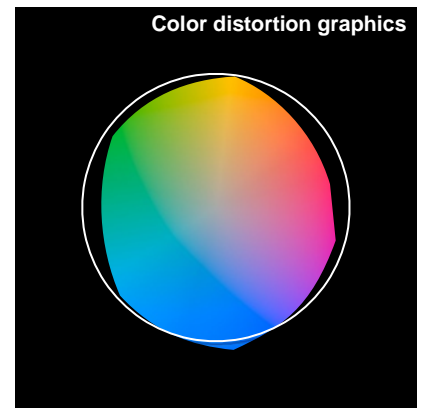
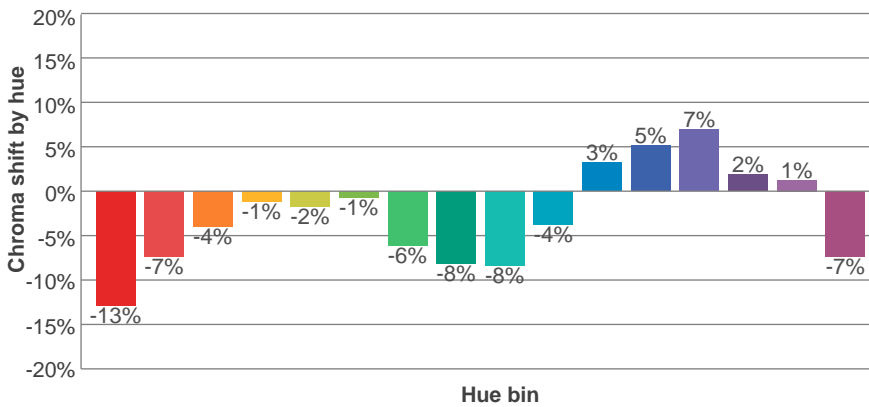
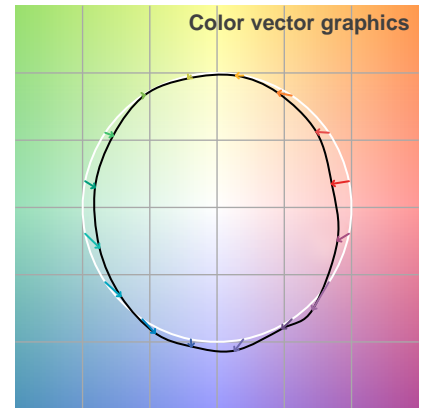
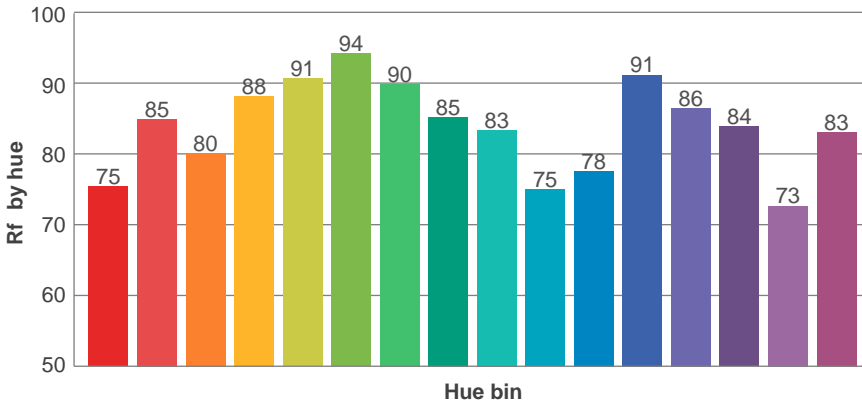
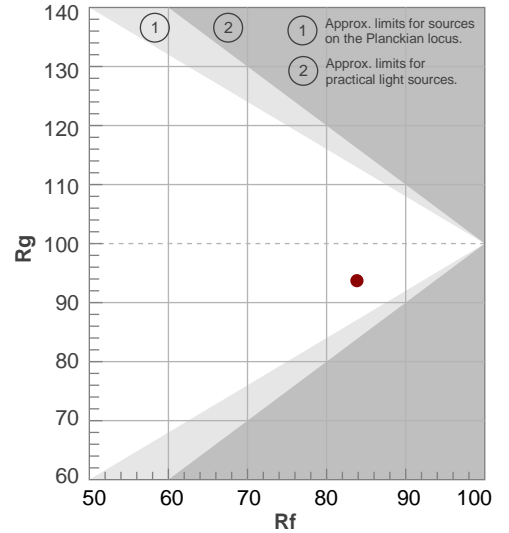
Color temperature	Color rendering index	Red component	Color fidelity	Color gamut	Color quality scale	Color coordinate cie 1931	Color coordinate cie 1931	Color coordinate	Color coordinate	Color deviation from black body
CCT	CRI	CRI R9	TM30 Rf	TM30 Rg	CQS	x	y	u	v	$\Delta uv$
5314 K	84,1	8,5	83,8	93,7	81,0	0,337	0,348	0,207	0,321	0,0016

TM-30 details

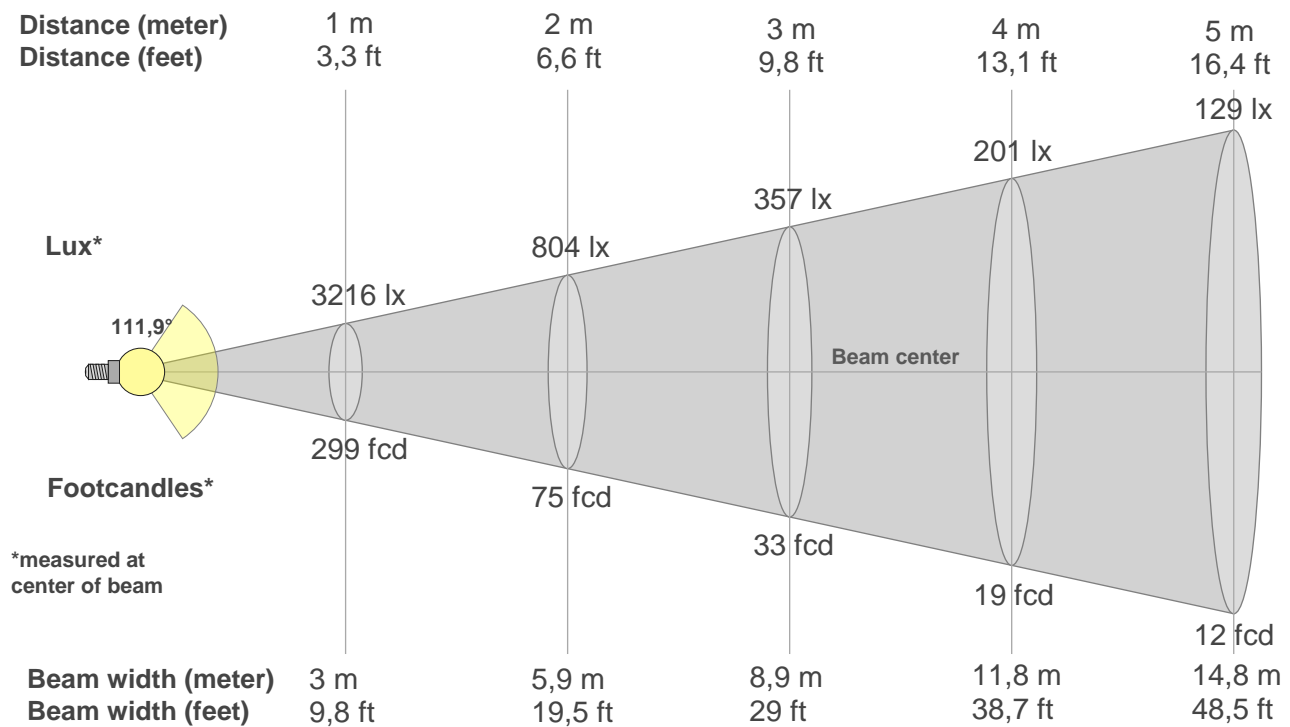
**Rf 83,8**  
Fidelity index Rf

**Rg 93,7**  
Gamut index Rg

Hue Bin	R <sub>f</sub>	Shifts (%)	
		Chroma	Hue
1	75	-13%	1%
2	85	-7%	6%
3	80	-4%	10%
4	88	-1%	5%
5	91	-2%	2%
6	94	-1%	-2%
7	90	-6%	-1%
8	85	-8%	3%
9	83	-8%	12%
10	75	-4%	15%
11	78	3%	13%
12	91	5%	1%
13	86	7%	-8%
14	84	2%	-10%
15	73	1%	-24%
16	83	-7%	-7%



## Beam details



### Beam intensities from 1-20m

{BEAM\_INT\_TABLE\_START}

m	m	m	m	m	m	m	m	m	m	m	m	m	m	m	m	m	m	m	m	m
ft	ft	ft	ft	ft	ft	ft	ft	ft	ft	ft	ft	ft	ft	ft	ft	ft	ft	ft	ft	ft
lx	lx	lx	lx	lx	lx	lx	lx	lx	lx	lx	lx	lx	lx	lx	lx	lx	lx	lx	lx	lx
fcd	fcd	fcd	fcd	fcd	fcd	fcd	fcd	fcd	fcd	fcd	fcd	fcd	fcd	fcd	fcd	fcd	fcd	fcd	fcd	fcd

### Intensities in 0° c-plane

0°	5°	10°	15°	20°	25°	30°	35°	40°	45°	50°	55°	60°	65°	70°	75°	80°	85°	90°	95°
3216	3184	3131	3076	3027	3004	2913	2775	2592	2363	2069	1770	1403	1003	596	255	27	2	0	0
100%	99%	97%	96%	94%	93%	91%	86%	81%	73%	64%	55%	44%	31%	19%	8%	1%	0%	0%	0%

### Intensities in 90° c-plane

0°	5°	10°	15°	20°	25°	30°	35°	40°	45°	50°	55°	60°	65°	70°	75°	80°	85°	90°	95°
3216	3235	3322	3448	3529	3366	3154	2890	2515	2311	1932	1507	1014	517	125	31	6	1	0	0
100%	101%	103%	107%	110%	105%	98%	90%	78%	72%	60%	47%	32%	16%	4%	1%	0%	0%	0%	0%

### Intensities in 180° c-plane

0°	5°	10°	15°	20°	25°	30°	35°	40°	45°	50°	55°	60°	65°	70°	75°	80°	85°	90°	95°
3216	3184	3131	3076	3027	3004	2913	2775	2592	2363	2069	1770	1403	1003	596	255	27	2	0	0
100%	99%	97%	96%	94%	93%	91%	86%	81%	73%	64%	55%	44%	31%	19%	8%	1%	0%	0%	0%

### Intensities in 270° c-plane

0°	5°	10°	15°	20°	25°	30°	35°	40°	45°	50°	55°	60°	65°	70°	75°	80°	85°	90°	95°
3216	3235	3322	3448	3529	3366	3154	2890	2515	2311	1932	1507	1014	517	125	31	6	1	0	0
100%	101%	103%	107%	110%	105%	98%	90%	78%	72%	60%	47%	32%	16%	4%	1%	0%	0%	0%	0%

Beam angle 50%	Field angle 10%	Cutoff angle 2,5%	Intensity ratio in 120° cone	Intensity ratio in 90° cone
111,9°	141,9°	150,3°	88,7%	61,1%

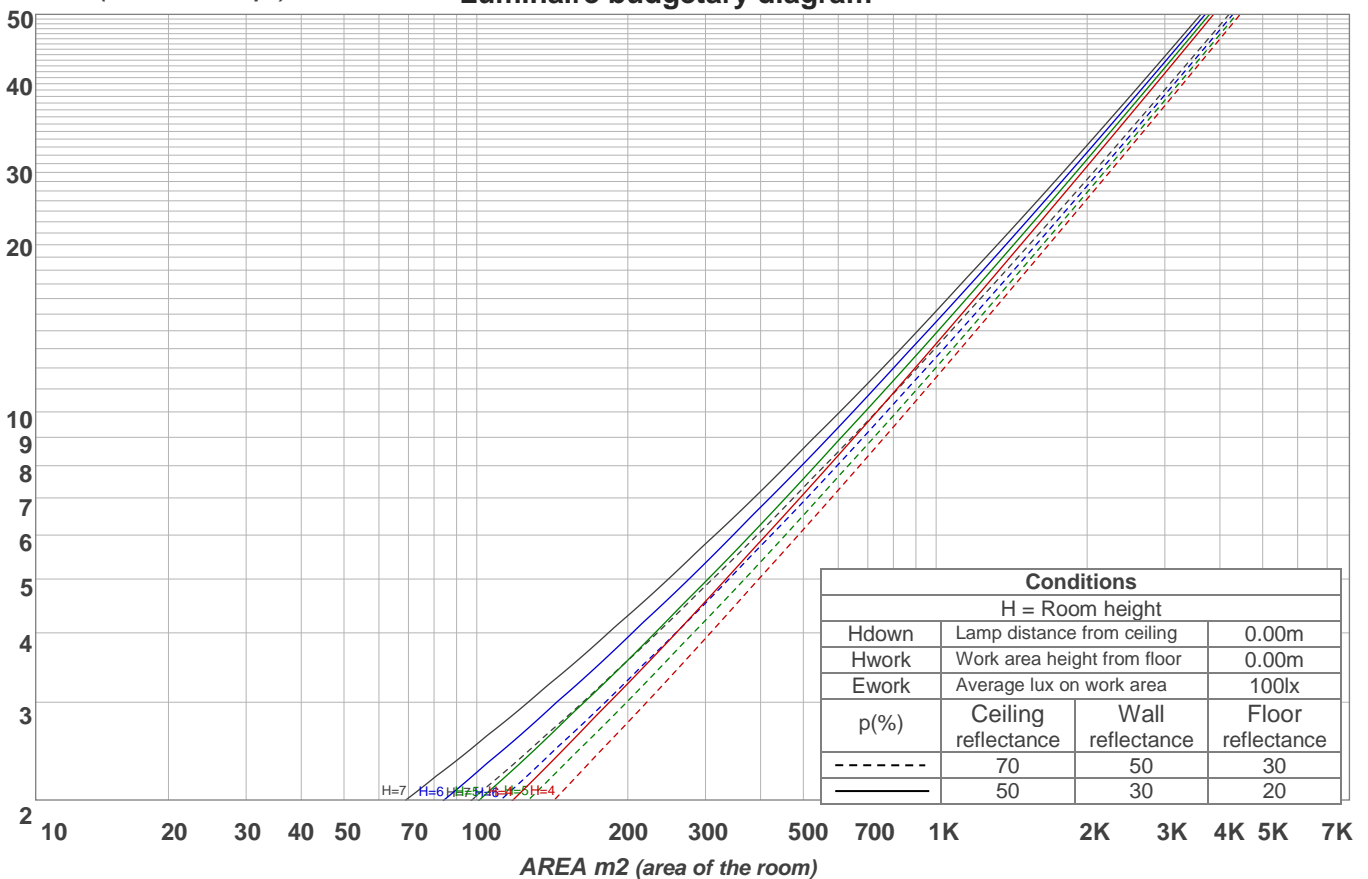
# Light planning

## Coefficients of Utilization

Ceiling reflectance	80				70				50			30			10			0			
Wall reflectance	70	50	30	10	70	50	30	10	50	30	10	50	30	10	50	30	10	0			
Floor reflectance	20	20	20	20	20	20	20	20	20	20	20	20	20	20	20	20	20	20	20	20	0
<b>RCR</b>	<b>(RCR: Room Cavity Ratio)</b>																				
	Room Values are expressed as percentage of Lumens delivered to the task surface																				
0	119	119	119	119	116	116	116	116	111	111	111	106	106	106	102	102	102	100			
1	111	107	103	100	108	104	101	98	100	97	95	96	94	92	93	91	89	87			
2	102	94	88	83	99	92	87	82	89	84	80	86	82	78	83	80	77	75			
3	93	83	76	70	91	82	75	70	79	73	68	76	71	67	74	70	66	64			
4	85	74	66	60	83	73	65	60	71	64	59	68	63	58	66	61	57	55			
5	79	67	58	52	77	65	57	52	63	56	51	61	55	50	60	54	50	48			
6	73	60	51	45	71	59	51	45	57	50	45	56	49	44	54	48	44	42			
7	67	54	46	40	66	54	46	40	52	45	40	51	44	39	49	43	39	37			
8	63	50	41	36	61	49	41	36	48	40	35	46	40	35	45	39	35	33			
9	58	45	37	32	57	45	37	32	44	37	32	43	36	32	42	36	31	30			
10	55	42	34	29	53	41	34	29	40	33	29	39	33	29	38	33	28	27			

LAMPS (number of lamps)

Luminaire budgetary diagram

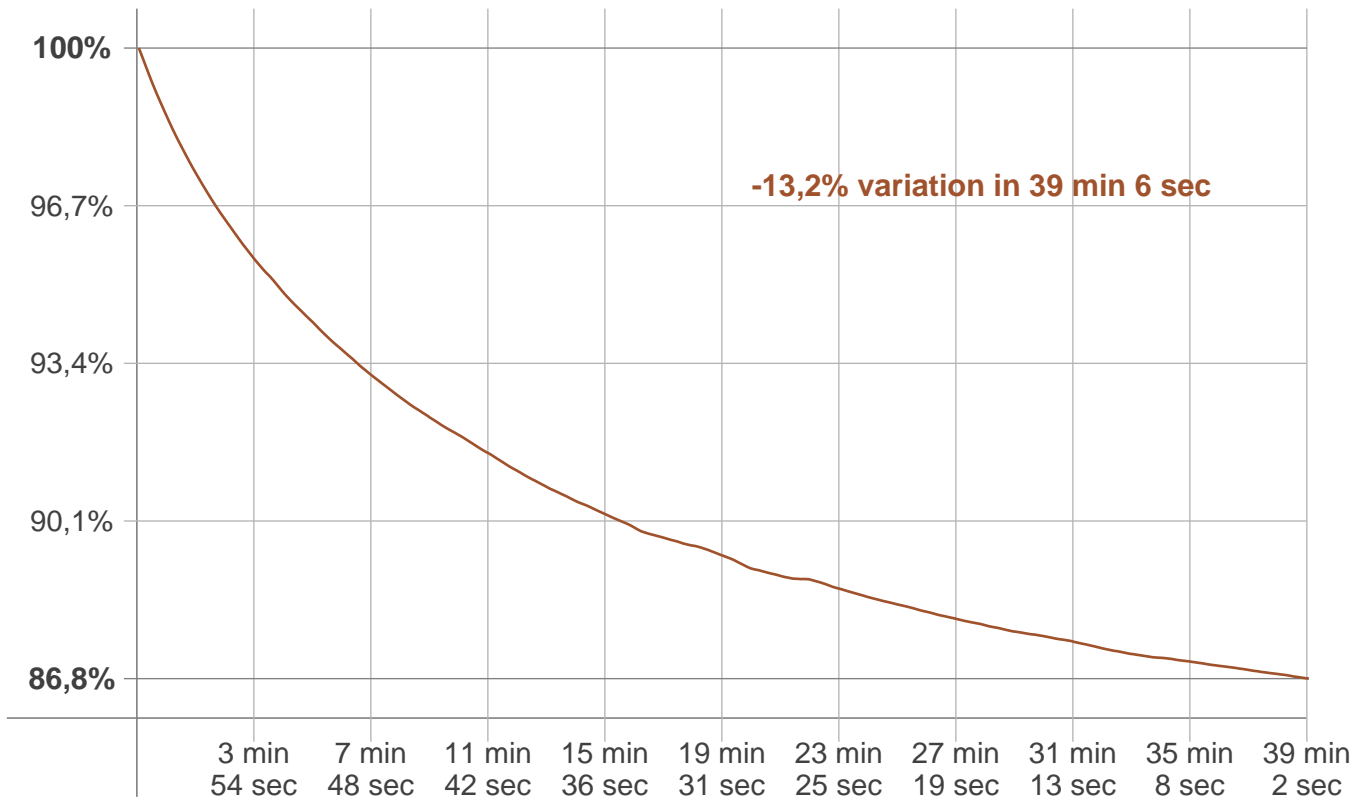


### Zonal Lumen Summary

0°-10°	10°-20°	20°-30°	30°-40°	40°-50°	50°-60°	60°-70°	70°-80°	80°-90°
306 lm	922 lm	1498 lm	1866 lm	1910 lm	1573 lm	851 lm	167 lm	2,51 lm
90°-100°	100°-110°	110°-120°	120°-130°	130°-140°	140°-150°	150°-160°	160°-170°	170°-180°
0,488 lm	0,773 lm	1,02 lm	1,17 lm	1,14 lm	0,985 lm	0,751 lm	0,480 lm	0,171 lm

## Stabilization

### Warmup curve



### Warmup result

Warmup time:	39 min 6 sec
Warmup variation	-13,3%

### Warmup conditions

Stable period:	15 min
Stable change max:	2,0%
Minimum time:	15 min

### Color temperature change

CCT start	CCT change	CCT end
5153 K	+161 K	5314 K

### Output change

Output start	Output change	Output end
10445 lm	-1342 lm	9103 lm