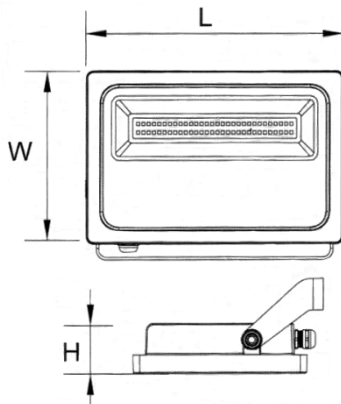




Dimensiones (mm)

**Largo (L): 222; Ancho (W): 183
Alto (H): 50.**



Código

ACUA-I-50W-5K

Descripción

Luminaria tipo reflector, diseñada con módulos de LED. Para anclar en piso, poste o muro por medio del sujetador ubicado en la parte trasera. Compuesta en la parte interna por una pantalla en aluminio semi-especular y un difusor en vidrio templado.




Materiales y acabado

Cuerpo y disipador en aluminio inyectado. Sujetador fabricado en lámina de hierro. Todas las piezas con acabado en pintura poliéster electrostática en polvo.

Color

Gris Oscuro.

Características técnicas

LED	 114°	 50,000h	IP 65	IK 08
PF 0,99	THD <15%	°C 0-55	V 90-265	

Fuente de luz

Módulos de LED.

Potencia Nominal	CRI	K	Lm / W	Lm de Salida
50W	>80	5000	97	4657

Características de fuente de luz

- Colores temperatura disponible 5000K (luz día).
- Chip de LED con salida de alto rendimiento.
- Potencia de Salida: 48W.

Nota: Debido a continua investigación, nos reservamos el derecho de cambiar especificaciones sin previa notificación.



Light efficiency:



Light quality:



Color temperature:



Output: 4657 lm

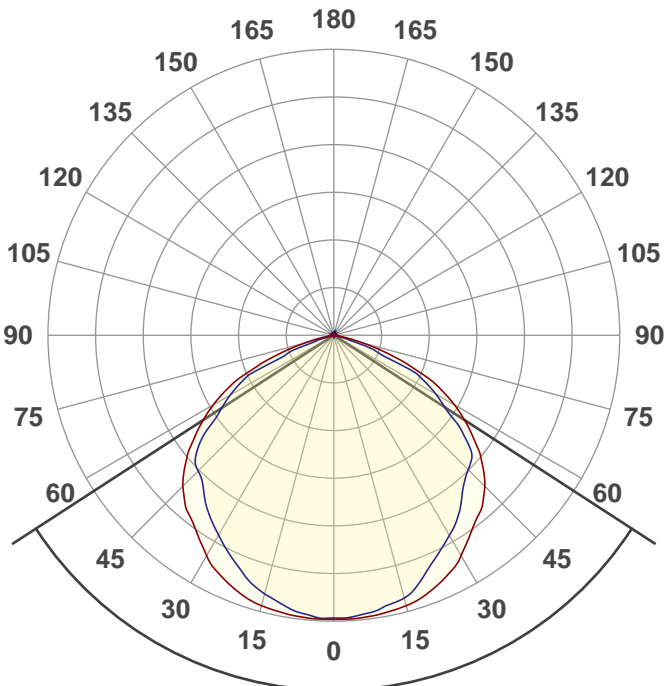
Peak: 1727 cd

Power: 48,0 W

PF: 0,99



Product name:
E0448-ACUA-I-50W-5K



Beam angle **114°**



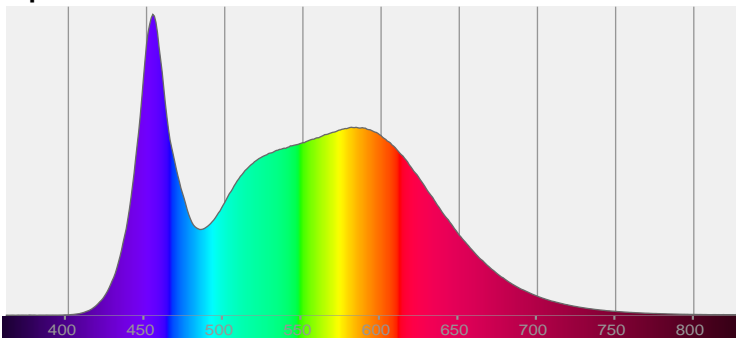
CIE 1931
x: 0,339
y: 0,351

THD Values:

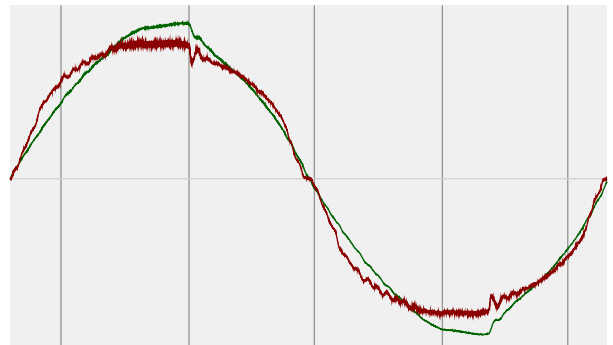
Voltage: 3%

Current: 11,62%

Spectra



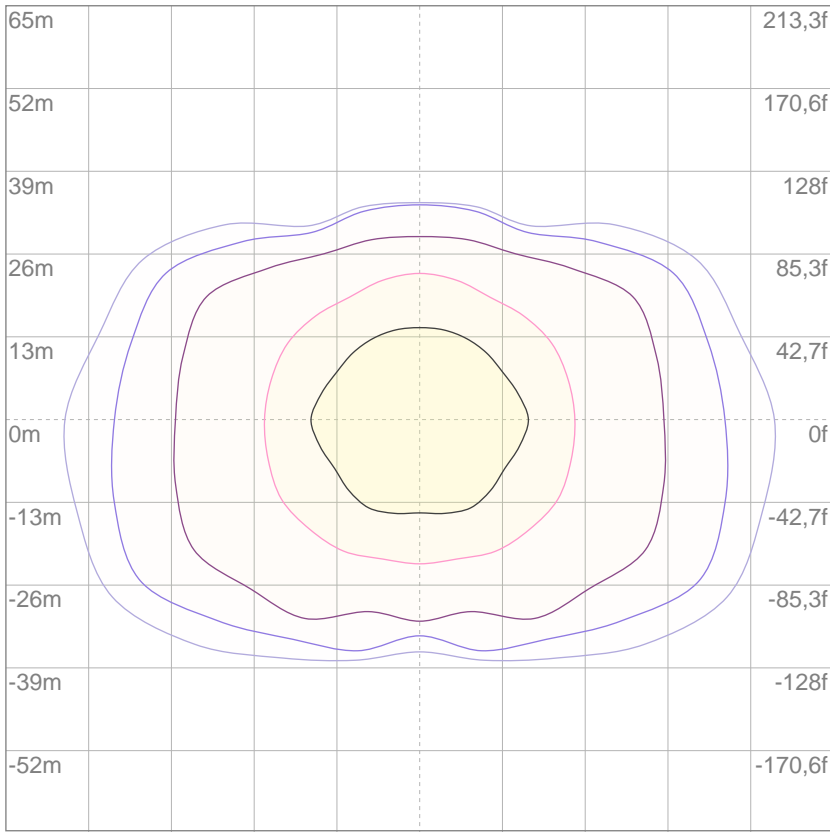
Power



Voltage: 116 V
Current: 0,415 A
Frequency: 60,3 Hz

ISO Diagrams

ISO lux diagram



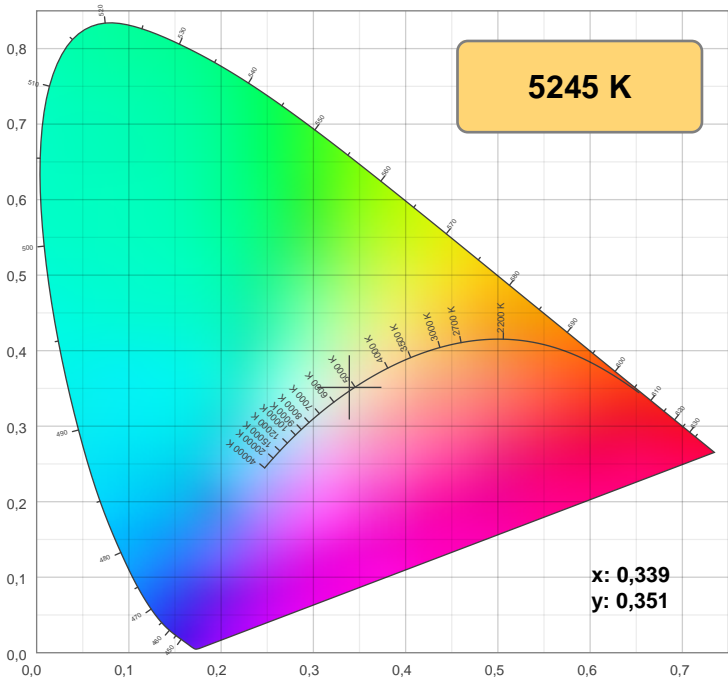
3%	0,516 lx
5%	0,860 lx
10%	1,72 lx
30%	5,16 lx
50%	8,60 lx

Conditions:
 Number of c-planes: 12
 Lux at center: 17,2 lx

Lux distribution on a surface when lamp is mounted at 10 meters from the surface.

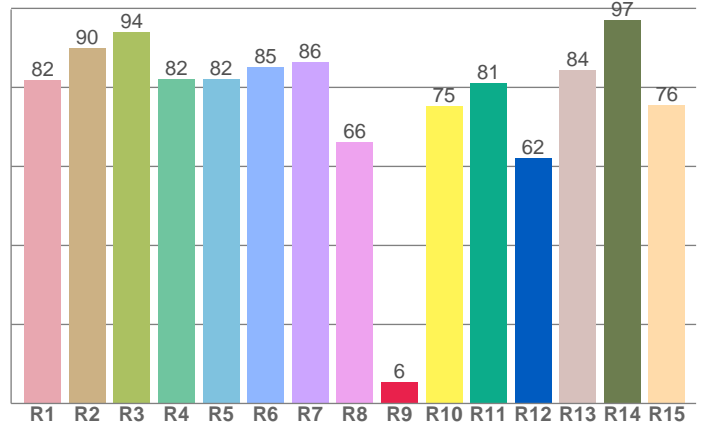
Mounting height: 10 meters (33 f)

Color details



CIE 1931

CRI: 83,5 (R1-R8)



CRI R values, only R1-R8 are used to calculate final CRI value

R1	R2	R3	R4	R5	R6	R7	R8	R9	R10	R11	R12	R13	R14	R15
81,8	90,0	94,1	82,1	82,1	85,1	86,4	66,2	5,5	75,3	81,2	62,0	84,4	97,1	75,5

Color parameters

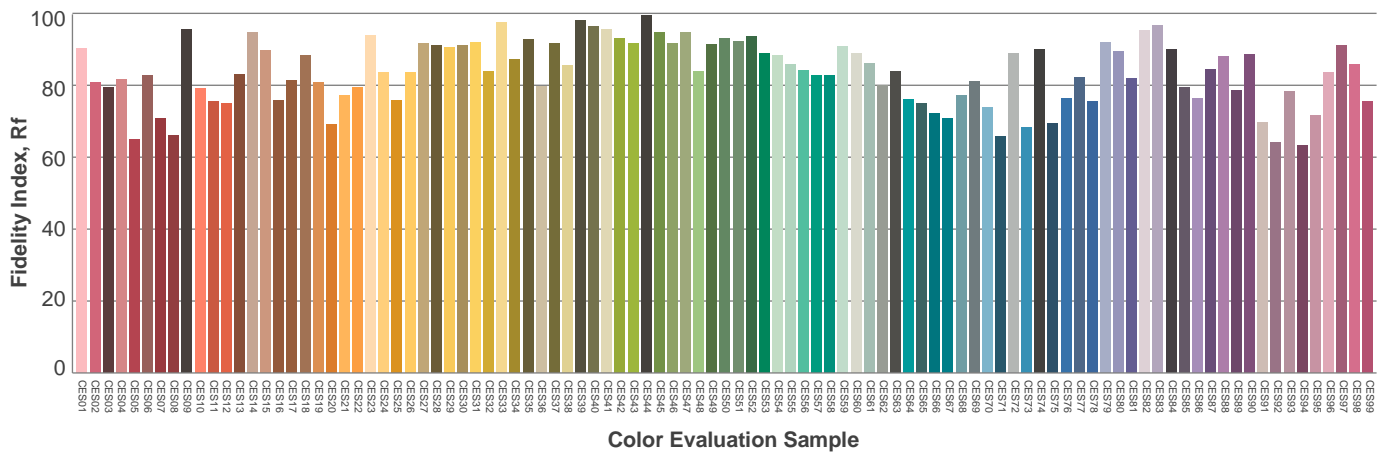
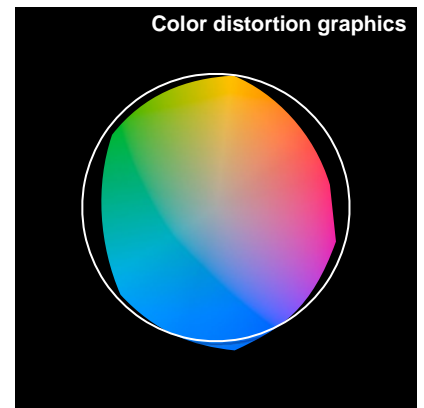
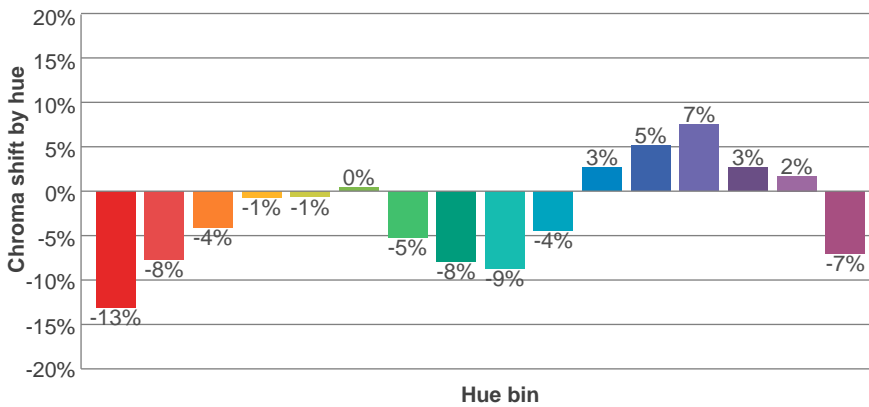
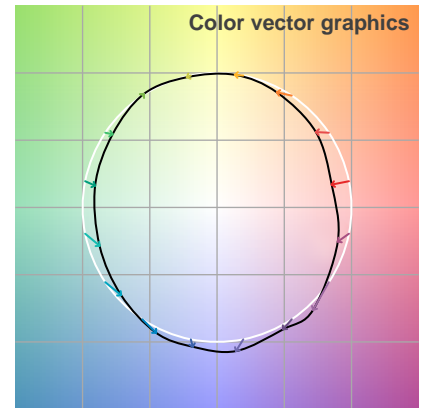
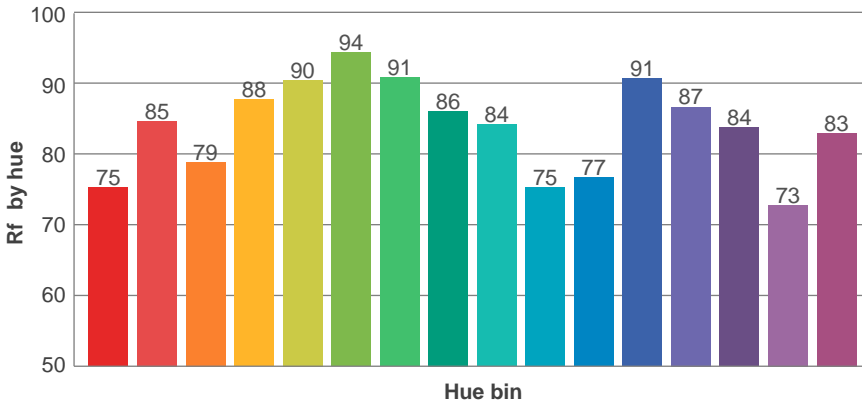
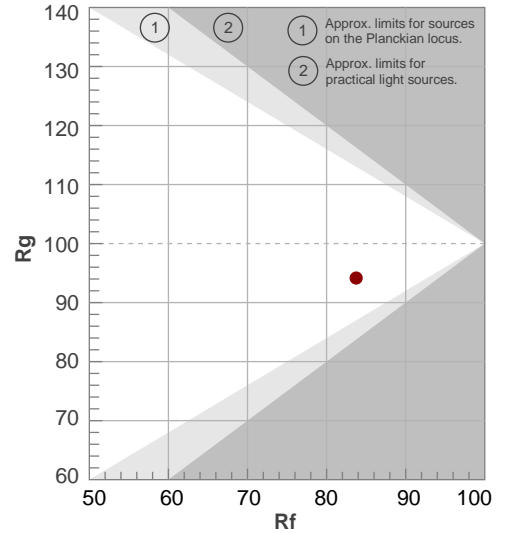
Color temperature	Color rendering index	Red component	Color fidelity	Color gamut	Color quality scale	Color coordinate cie 1931	Color coordinate cie 1931	Color coordinate	Color coordinate	Color deviation from black body
CCT	CRI	CRI R9	TM30 Rf	TM30 Rg	CQS	x	y	u	v	Δuv
5245 K	83,5	5,5	83,7	94,2	80,8	0,339	0,351	0,207	0,322	0,0009

TM-30 details

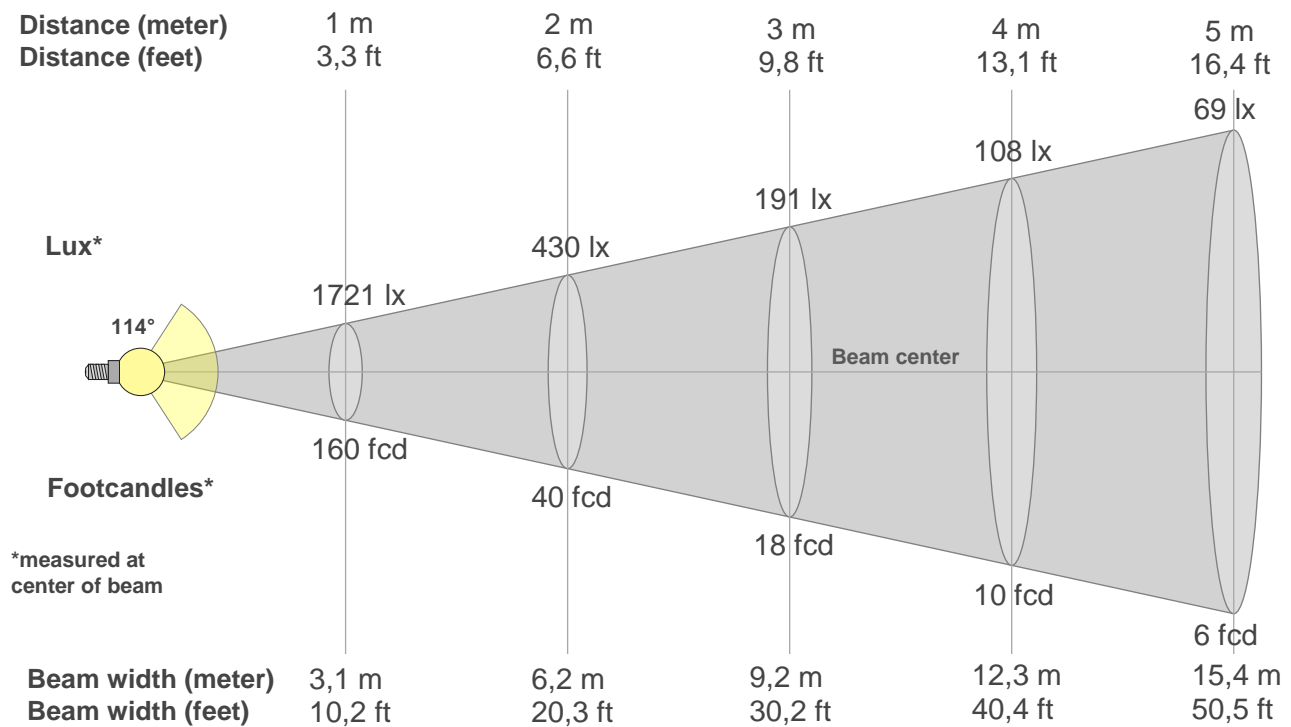
Rf 83,7
Fidelity index Rf

Rg 94,2
Gamut index Rg

Hue Bin	R _f	Shifts (%)	
		Chroma	Hue
1	75	-13%	0%
2	85	-8%	6%
3	79	-4%	11%
4	88	-1%	6%
5	90	-1%	3%
6	94	0%	-2%
7	91	-5%	-2%
8	86	-8%	2%
9	84	-9%	11%
10	75	-4%	15%
11	77	3%	14%
12	91	5%	3%
13	87	7%	-7%
14	84	3%	-9%
15	73	2%	-24%
16	83	-7%	-7%



Beam details



Beam intensities from 1-20m

(BEAM_INT_TABLE_START)

m	m	m	m	m	m	m	m	m	m	m	m	m	m	m	m	m	m	m	m	m
ft	ft	ft	ft	ft	ft	ft	ft	ft	ft	ft	ft	ft	ft	ft	ft	ft	ft	ft	ft	ft
lx	lx	lx	lx	lx	lx	lx	lx	lx	lx	lx	lx	lx	lx	lx	lx	lx	lx	lx	lx	lx
fcd	fcd	fcd	fcd	fcd	fcd	fcd	fcd	fcd	fcd	fcd	fcd	fcd	fcd	fcd	fcd	fcd	fcd	fcd	fcd	fcd

Intensities in 0° c-plane

0°	5°	10°	15°	20°	25°	30°	35°	40°	45°	50°	55°	60°	65°	70°	75°	80°	85°	90°	95°
1721	1726	1716	1701	1668	1617	1546	1456	1389	1297	1169	1012	847	658	408	188	48	1	0	0
100%	100%	100%	99%	97%	94%	90%	85%	81%	75%	68%	59%	49%	38%	24%	11%	3%	0%	0%	0%

Intensities in 90° c-plane

0°	5°	10°	15°	20°	25°	30°	35°	40°	45°	50°	55°	60°	65°	70°	75°	80°	85°	90°	95°
1721	1709	1683	1653	1572	1480	1404	1324	1220	1155	1086	889	716	554	256	28	2	1	0	0
100%	99%	98%	96%	91%	86%	82%	77%	71%	67%	63%	52%	42%	32%	15%	2%	0%	0%	0%	0%

Intensities in 180° c-plane

0°	5°	10°	15°	20°	25°	30°	35°	40°	45°	50°	55°	60°	65°	70°	75°	80°	85°	90°	95°
1721	1726	1716	1701	1668	1617	1546	1456	1389	1297	1169	1012	847	658	408	188	48	1	0	0
100%	100%	100%	99%	97%	94%	90%	85%	81%	75%	68%	59%	49%	38%	24%	11%	3%	0%	0%	0%

Intensities in 270° c-plane

0°	5°	10°	15°	20°	25°	30°	35°	40°	45°	50°	55°	60°	65°	70°	75°	80°	85°	90°	95°
1721	1708	1674	1627	1564	1481	1402	1324	1231	1166	1082	876	727	566	253	3	1	0	0	0
100%	99%	97%	95%	91%	86%	81%	77%	72%	68%	63%	51%	42%	33%	15%	0%	0%	0%	0%	0%

Beam angle 50%	Field angle 10%	Cutoff angle 2,5%	Intensity ratio in 120° cone	Intensity ratio in 90° cone
114°	148,1°	155,3°	84,3%	56,8%

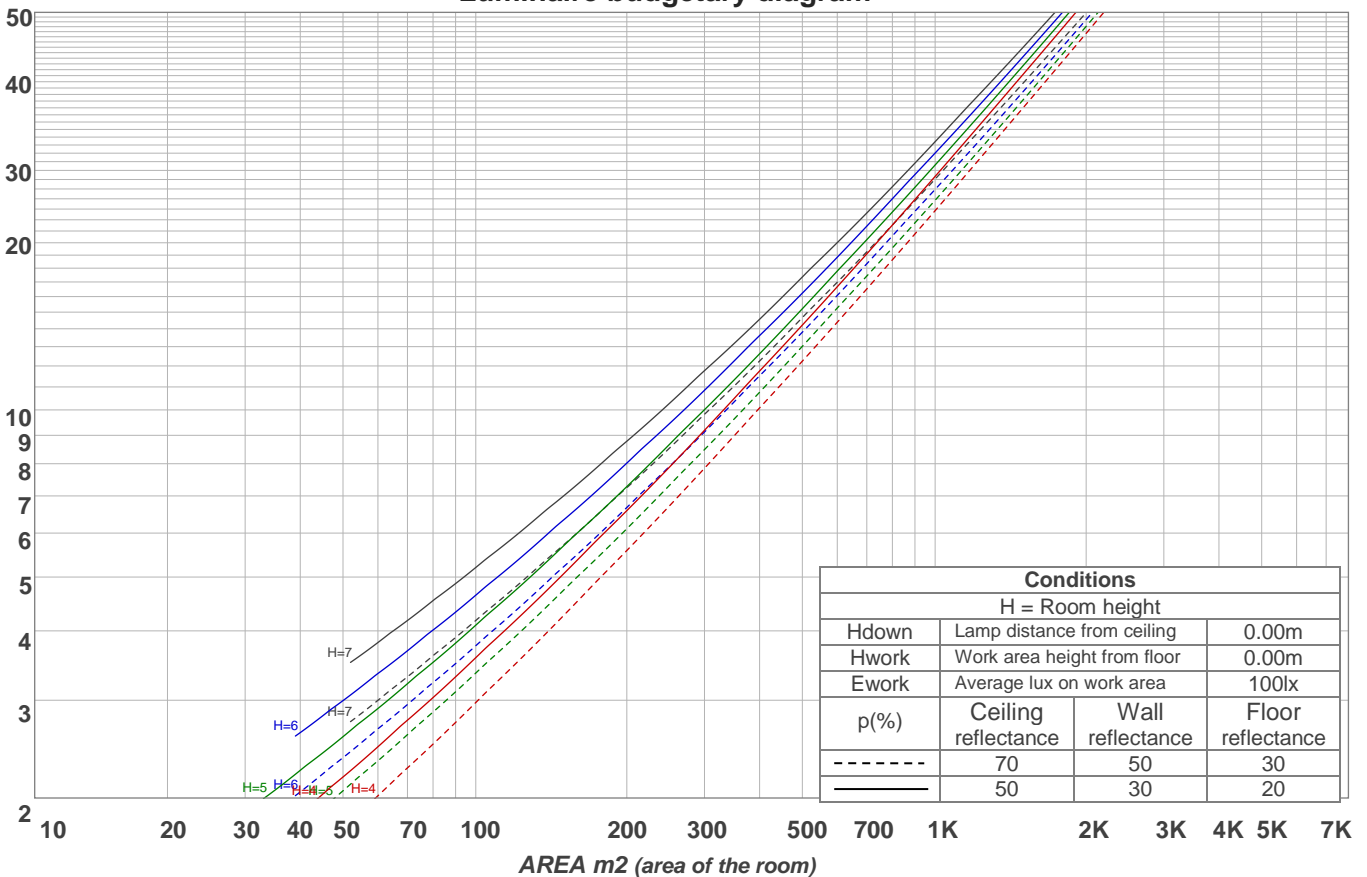
Light planning

Coefficients of Utilization

Ceiling reflectance	80				70				50			30			10			0			
Wall reflectance	70	50	30	10	70	50	30	10	50	30	10	50	30	10	50	30	10	0			
Floor reflectance	20	20	20	20	20	20	20	20	20	20	20	20	20	20	20	20	20	20	20	20	0
RCR	(RCR: Room Cavity Ratio)																				
	Room Values are expressed as percentage of Lumens delivered to the task surface																				
0	119	119	119	119	116	116	116	116	111	111	111	106	106	106	102	102	102	100			
1	110	106	102	99	107	103	100	97	99	96	94	95	93	91	92	90	88	86			
2	101	93	87	81	98	91	85	80	87	83	78	84	80	77	81	78	75	73			
3	92	82	74	68	89	80	73	67	77	71	66	75	69	65	72	68	64	62			
4	84	73	64	58	82	71	63	57	69	62	56	66	61	56	64	59	55	53			
5	77	65	56	50	75	64	56	49	62	54	49	60	53	48	58	52	48	46			
6	71	58	50	43	69	57	49	43	56	48	43	54	47	42	52	47	42	40			
7	66	53	44	38	64	52	44	38	51	43	38	49	42	38	48	42	37	35			
8	62	48	40	34	60	47	39	34	46	39	34	45	38	34	44	38	33	31			
9	57	44	36	31	56	44	36	31	42	35	30	41	35	30	40	34	30	28			
10	54	41	33	28	53	40	33	28	39	32	28	38	32	27	37	32	27	26			

LAMPS (number of lamps)

Luminaire budgetary diagram

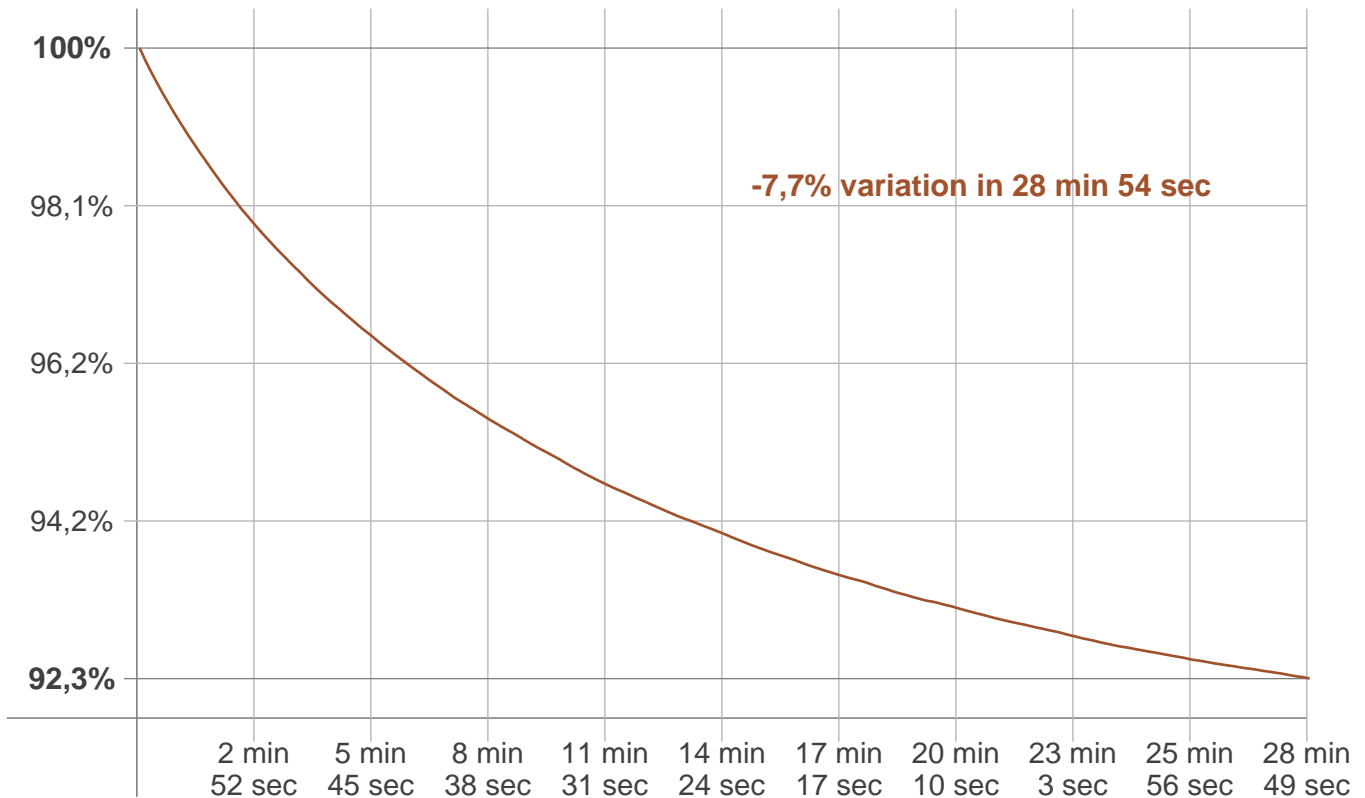


Zonal Lumen Summary

0°-10°	10°-20°	20°-30°	30°-40°	40°-50°	50°-60°	60°-70°	70°-80°	80°-90°
163 lm	469 lm	710 lm	855 lm	904 lm	827 lm	567 lm	156 lm	3,91 lm
90°-100°	100°-110°	110°-120°	120°-130°	130°-140°	140°-150°	150°-160°	160°-170°	170°-180°
0,315 lm	0,428 lm	0,503 lm	0,537 lm	0,518 lm	0,441 lm	0,326 lm	0,199 lm	0,065 lm

Stabilization

Warmup curve



Warmup result

Warmup time:	28 min 54 sec
Warmup variation	-7,8%

Warmup conditions

Stable period:	15 min
Stable change max:	2,0%
Minimum time:	15 min

Color temperature change

CCT start	CCT change	CCT end
5152 K	+93 K	5245 K

Output change

Output start	Output change	Output end
5037 lm	-381 lm	4657 lm