

Luminaria para exterior



Dimensiones (mm)

Largo: 365; **Ancho:** 372
Alto: 79.

Código

CESIO-I-100W-5K

Descripción

Luminaria diseñada para uso exterior, con módulos de LED integrados. Compuesta por óptico tipo lente el cual genera una apertura adecuada para la aplicación de la luminaria.




Materiales y acabado

Cuerpo y disipador en aluminio inyectado. Todas las piezas con acabado en pintura poliéster electrostática en polvo.

Color

Negro.

Características técnicas

LED	 131°	 50,000h	IP 65	IK 08
PF 1	THD <10%	°C -30-50	V 100-277	

Fuente de luz

Módulos de LED integrados.

Potencia Nominal	CRI	K	Lm / W	Lm de Salida
100W	>80	5000	141	14192

Características de fuente de luz

- Colores temperatura disponible 5000K (luz día).
- Chip de LED con salida de alto rendimiento.
- Potencia de Salida: 100,7W.

Light efficiency:



Light quality:



Color temperature:



Output: 14192 lm

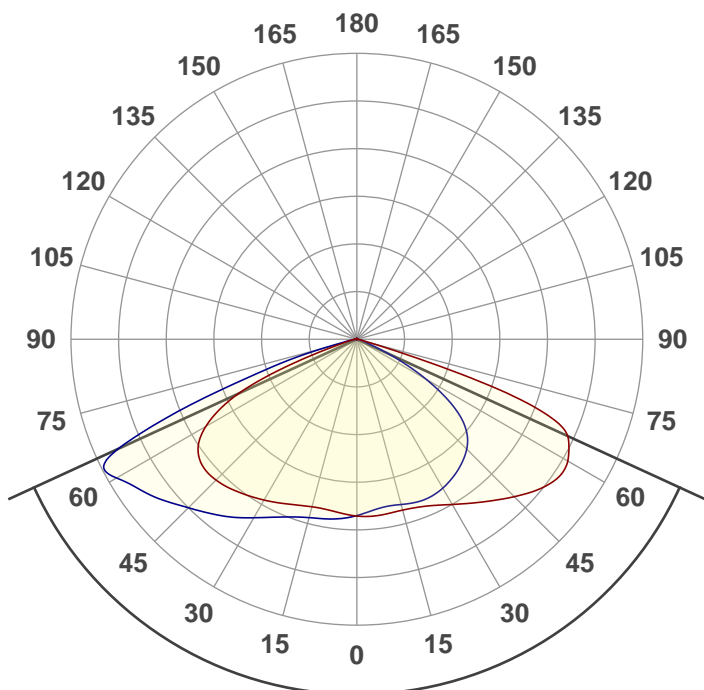
Peak: 4979 cd

Power: 100,7 W

PF: 1,0



Product name:
E0449-CESIO-I-100W-5K



Beam angle **130,7°**



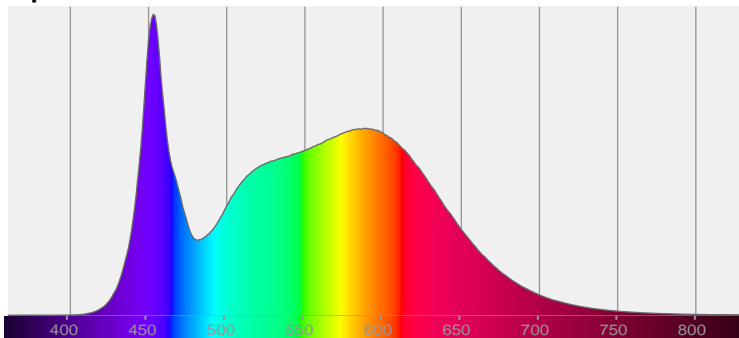
CIE 1931
x: 0,350
y: 0,359

THD Values:

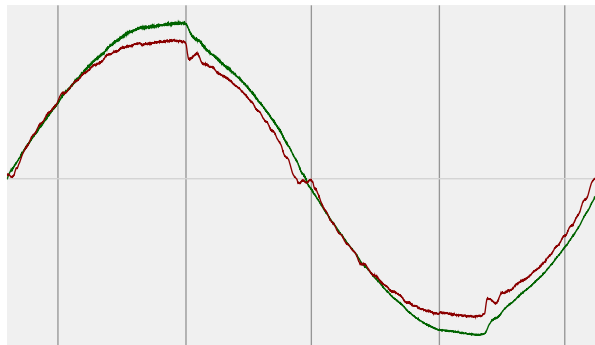
Voltage: 2,67%

Current: 3,75%

Spectra



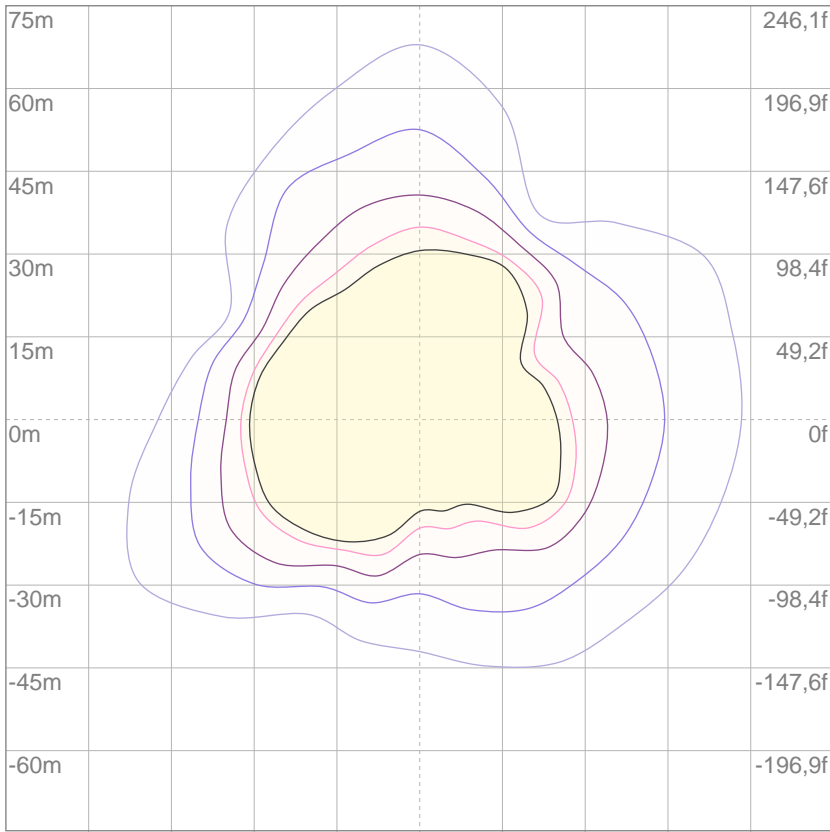
Power



Voltage: 115 V
Current: 0,879 A
Frequency: 60 Hz

ISO Diagrams

ISO lux diagram



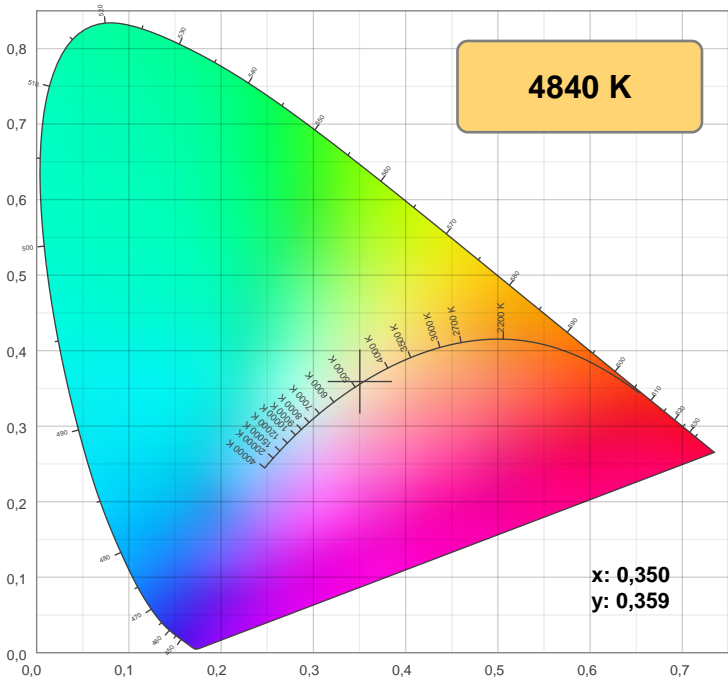
— 3%	0,929 lx
— 5%	1,55 lx
— 10%	3,10 lx
— 30%	9,29 lx
— 50%	15,5 lx

Conditions:
 Number of c-planes: 12
 Lux at center: 31,0 lx

Lux distribution on a surface when lamp is mounted at 10 meters from the surface.

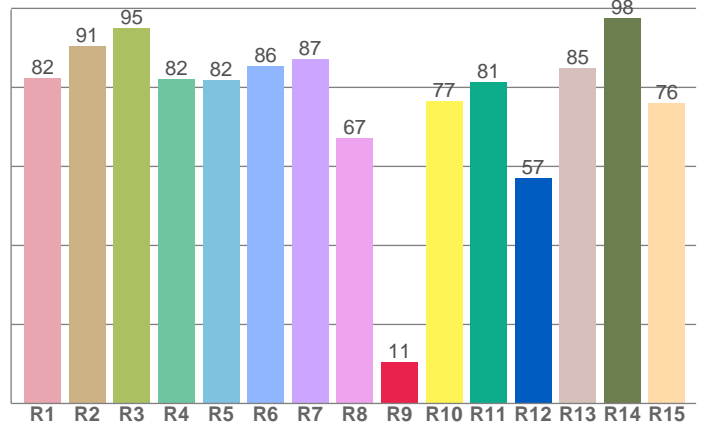
Mounting height: 10 meters (33 f)

Color details



CIE 1931

CRI: 84,0 (R1-R8)



CRI R values, only R1-R8 are used to calculate final CRI value

R1	R2	R3	R4	R5	R6	R7	R8	R9	R10	R11	R12	R13	R14	R15
82,4	90,5	95,0	82,0	82,0	85,5	87,1	67,2	10,6	76,6	81,3	57,0	85,0	97,6	75,9

Color parameters

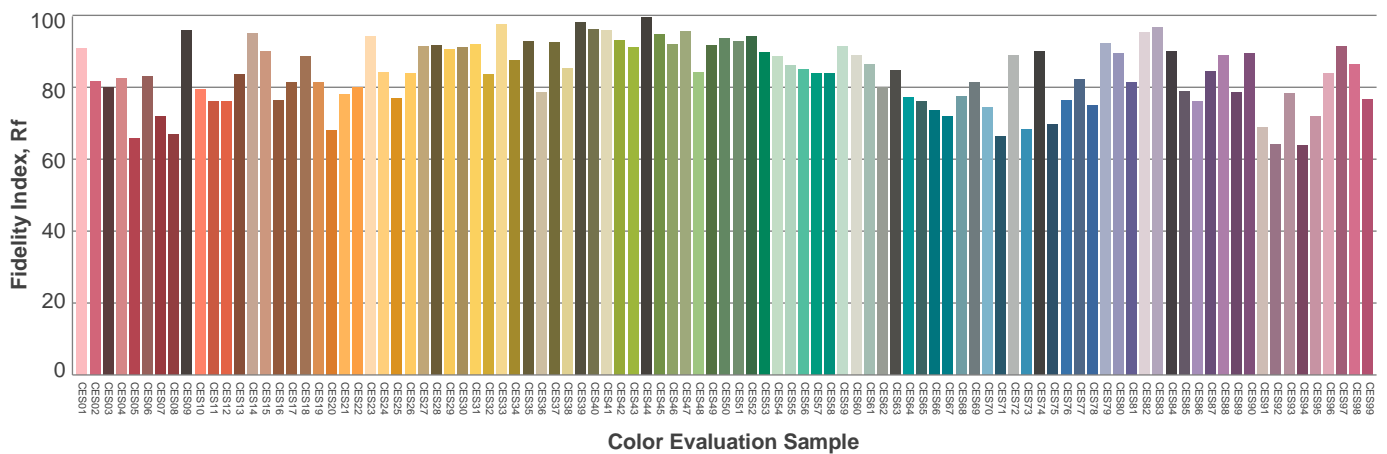
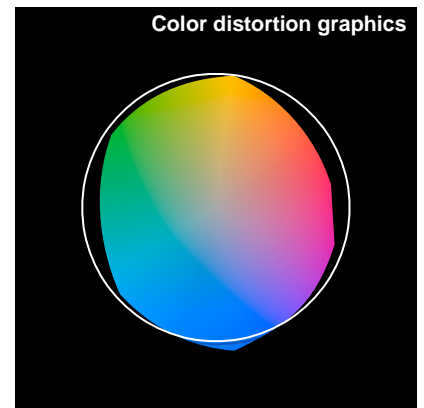
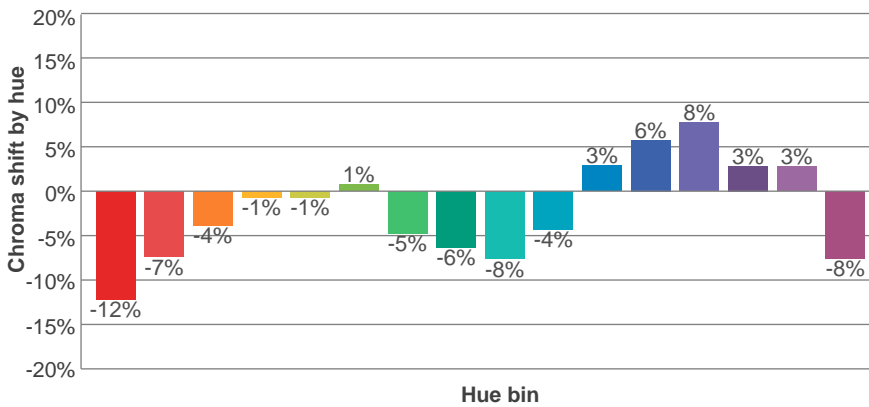
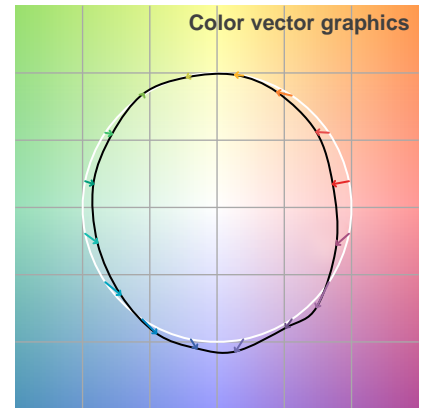
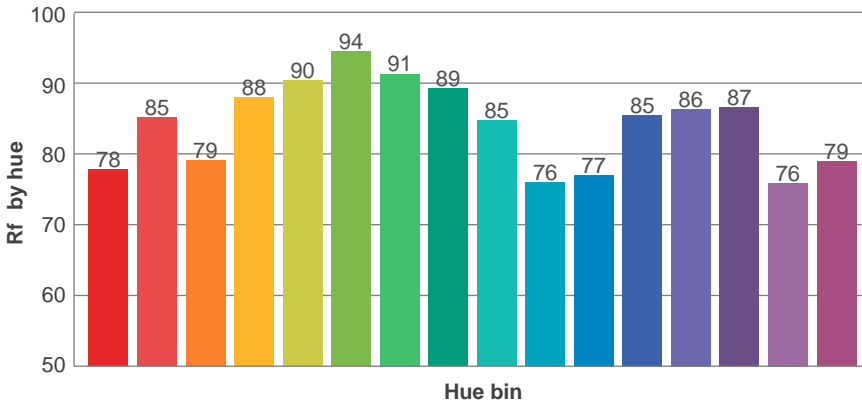
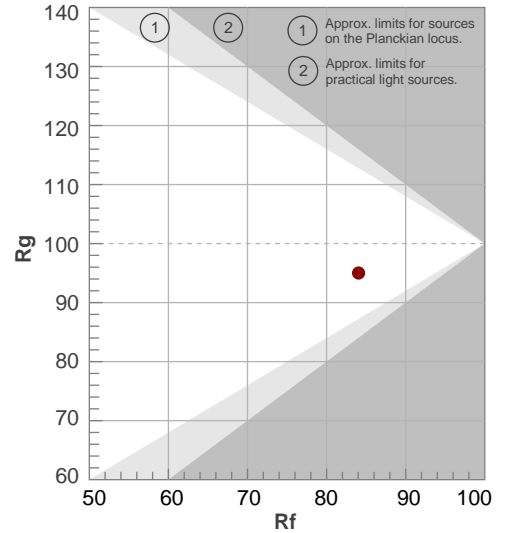
Color temperature	Color rendering index	Red component	Color fidelity	Color gamut	Color quality scale	Color coordinate cie 1931	Color coordinate cie 1931	Color coordinate	Color coordinate	Color deviation from black body
CCT	CRI	CRI R9	TM30 Rf	TM30 Rg	CQS	x	y	u	v	Δuv
4840 K	84,0	10,6	84,0	95,0	82,3	0,350	0,359	0,212	0,326	0,0017

TM-30 details

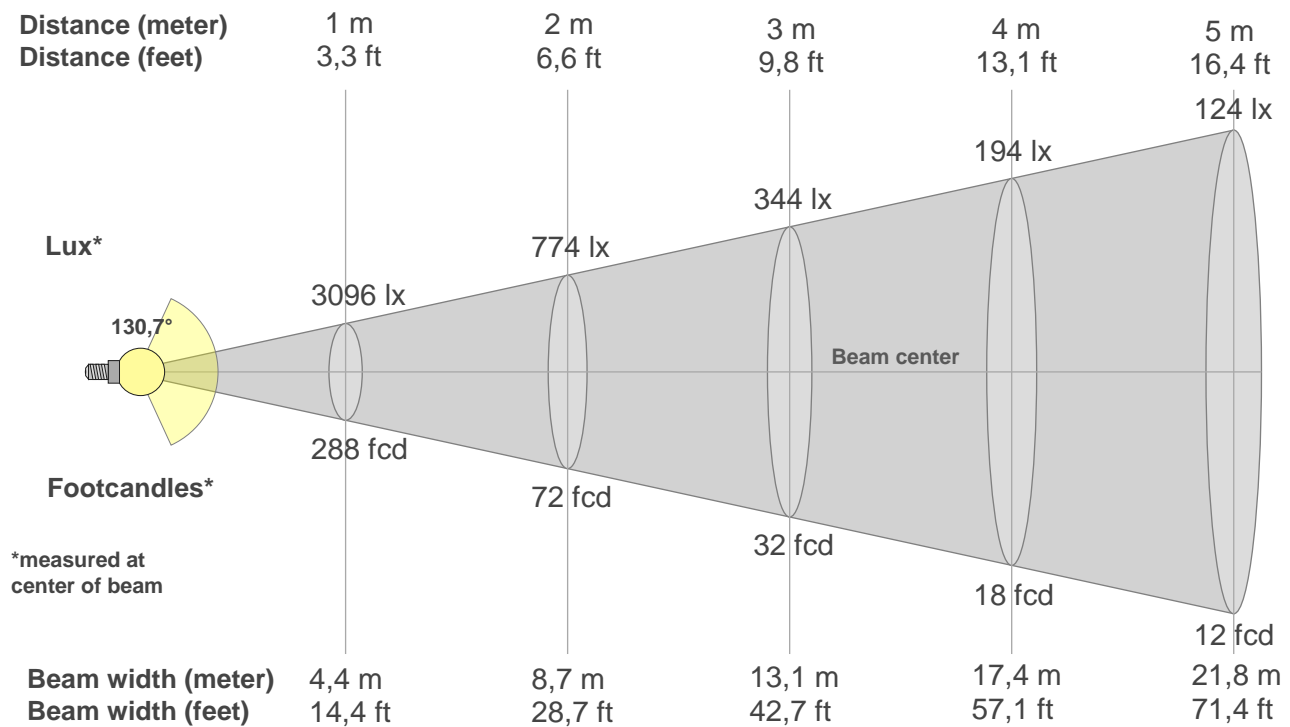
Rf 84,0
Fidelity index Rf

Rg 95,0
Gamut index Rg

Hue Bin	R _f	Shifts (%)	
		Chroma	Hue
1	78	-12%	0%
2	85	-7%	6%
3	79	-4%	10%
4	88	-1%	6%
5	90	-1%	3%
6	94	1%	-1%
7	91	-5%	-2%
8	89	-6%	1%
9	85	-8%	8%
10	76	-4%	14%
11	77	3%	14%
12	85	6%	5%
13	86	8%	-7%
14	87	3%	-7%
15	76	3%	-21%
16	79	-8%	-10%



Beam details



Beam intensities from 1-20m

1m	2m	3m	4m	5m	6m	7m	8m	9m	10m	11m	12m	13m	14m	15m	16m	17m	18m	19m	20m
3,3ft	6,6ft	9,8ft	13,1ft	16,4ft	19,7ft	23ft	26,2ft	29,5ft	32,8ft	36,1ft	39,4ft	42,7ft	45,9ft	49,2ft	52,5ft	55,8ft	59,1ft	62,3ft	65,6ft
3096lx	774lx	344lx	194lx	124lx	86lx	63lx	48lx	38lx	31lx	26lx	22lx	18lx	16lx	14lx	12lx	11lx	10lx	9lx	8lx
287,7fcd	71,9fcd	32fcd	18fcd	11,5fcd	8fcd	5,9fcd	4,5fcd	3,6fcd	2,9fcd	2,4fcd	2fcd	1,7fcd	1,5fcd	1,3fcd	1,1fcd	1fcd	0,9fcd	0,8fcd	0,7fcd

Intensities in 0° c-plane

0°	5°	10°	15°	20°	25°	30°	35°	40°	45°	50°	55°	60°	65°	70°	75°	80°	85°	90°	95°
3096	3112	3103	3099	3132	3213	3343	3506	3692	3901	4113	4269	4267	4082	2912	261	70	17	3	4
100%	101%	100%	100%	101%	104%	108%	113%	119%	126%	133%	138%	138%	132%	94%	8%	2%	1%	0%	0%

Intensities in 90° c-plane

0°	5°	10°	15°	20°	25°	30°	35°	40°	45°	50°	55°	60°	65°	70°	75°	80°	85°	90°	95°
3096	3016	2976	2998	3038	3048	3012	2943	2850	2722	2506	2081	1401	649	205	121	41	9	4	5
100%	97%	96%	97%	98%	98%	97%	95%	92%	88%	81%	67%	45%	21%	7%	4%	1%	0%	0%	0%

Intensities in 180° c-plane

0°	5°	10°	15°	20°	25°	30°	35°	40°	45°	50°	55°	60°	65°	70°	75°	80°	85°	90°	95°
3096	3061	3031	3040	3091	3168	3253	3340	3425	3489	3502	3396	3055	2348	977	236	100	35	4	4
100%	99%	98%	98%	100%	102%	105%	108%	111%	113%	113%	110%	99%	76%	32%	8%	3%	1%	0%	0%

Intensities in 270° c-plane

0°	5°	10°	15°	20°	25°	30°	35°	40°	45°	50°	55°	60°	65°	70°	75°	80°	85°	90°	95°
3096	3153	3196	3236	3314	3441	3612	3806	3986	4176	4400	4614	4862	4687	2325	627	137	50	3	2
100%	102%	103%	105%	107%	111%	117%	123%	129%	135%	142%	149%	157%	151%	75%	20%	4%	2%	0%	0%

Beam angle 50%	Field angle 10%	Cutoff angle 2,5%	Intensity ratio in 120° cone	Intensity ratio in 90° cone
130,7°	144,4°	155,8°	76,6%	43,1%

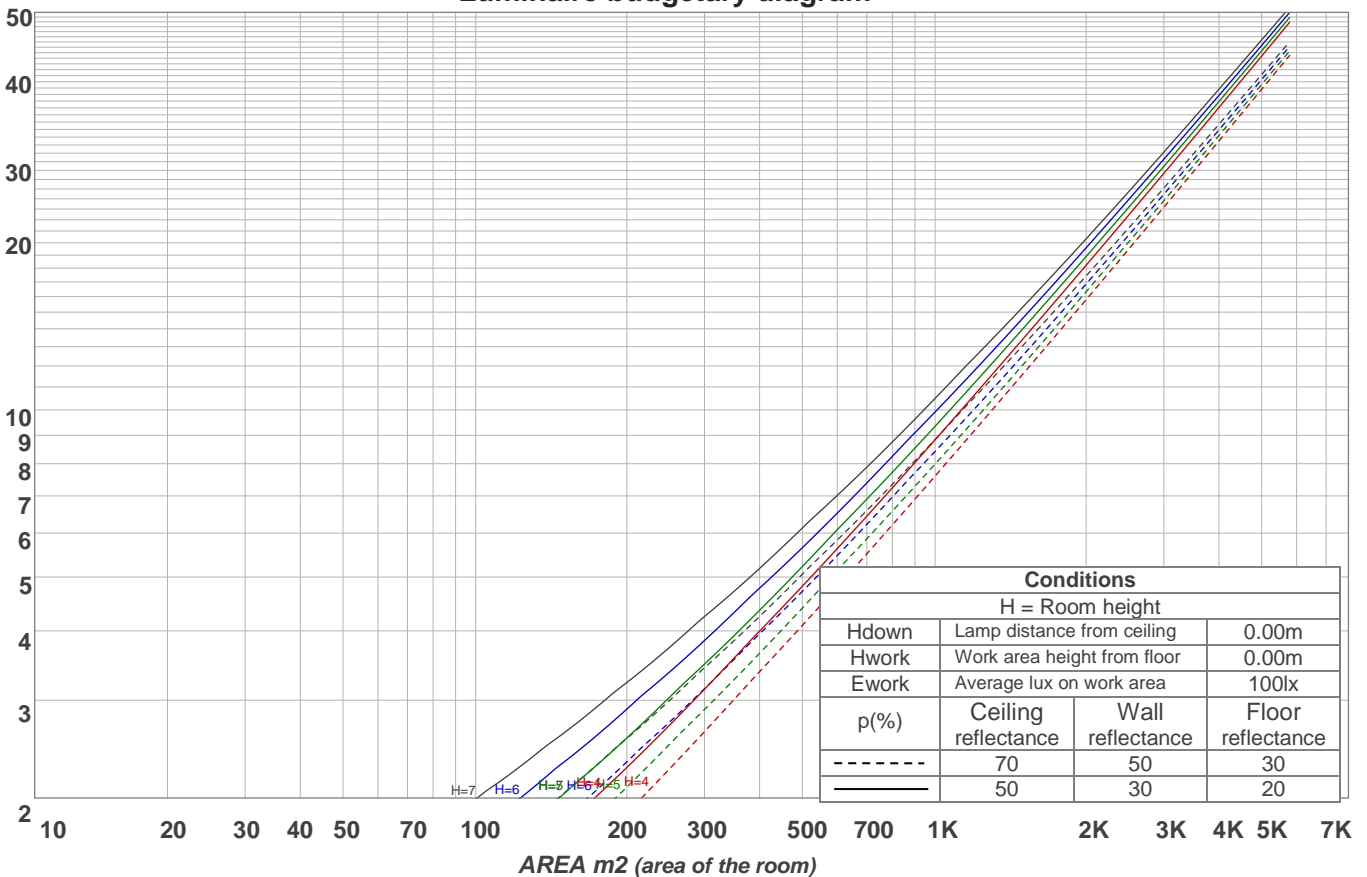
Light planning

Coefficients of Utilization

Ceiling reflectance	80				70				50			30			10			0			
Wall reflectance	70	50	30	10	70	50	30	10	50	30	10	50	30	10	50	30	10	0			
Floor reflectance	20	20	20	20	20	20	20	20	20	20	20	20	20	20	20	20	20	20	20	20	0
RCR	(RCR: Room Cavity Ratio)																				
	Room Values are expressed as percentage of Lumens delivered to the task surface																				
0	119	119	119	119	116	116	116	116	111	111	111	106	106	106	102	102	102	100			
1	109	104	100	96	106	102	98	94	97	94	91	94	91	89	90	88	86	84			
2	98	90	83	77	95	88	81	76	84	79	74	81	76	72	78	74	70	68			
3	88	77	69	62	86	76	68	61	73	66	60	70	64	59	67	62	58	56			
4	80	67	58	51	78	66	57	50	63	56	50	61	54	49	58	53	48	46			
5	73	59	49	42	70	58	49	42	56	48	41	53	46	41	52	45	40	38			
6	66	52	43	36	64	51	42	36	49	41	35	48	40	35	46	39	34	32			
7	61	47	37	31	59	46	37	31	44	36	30	43	35	30	41	35	30	28			
8	56	42	33	27	55	41	33	27	40	32	26	39	31	26	37	31	26	24			
9	52	38	29	24	51	38	29	24	36	29	23	35	28	23	34	28	23	21			
10	49	35	27	21	48	34	26	21	33	26	21	32	25	21	31	25	21	19			

LAMPS (number of lamps)

Luminaire budgetary diagram



Zonal Lumen Summary

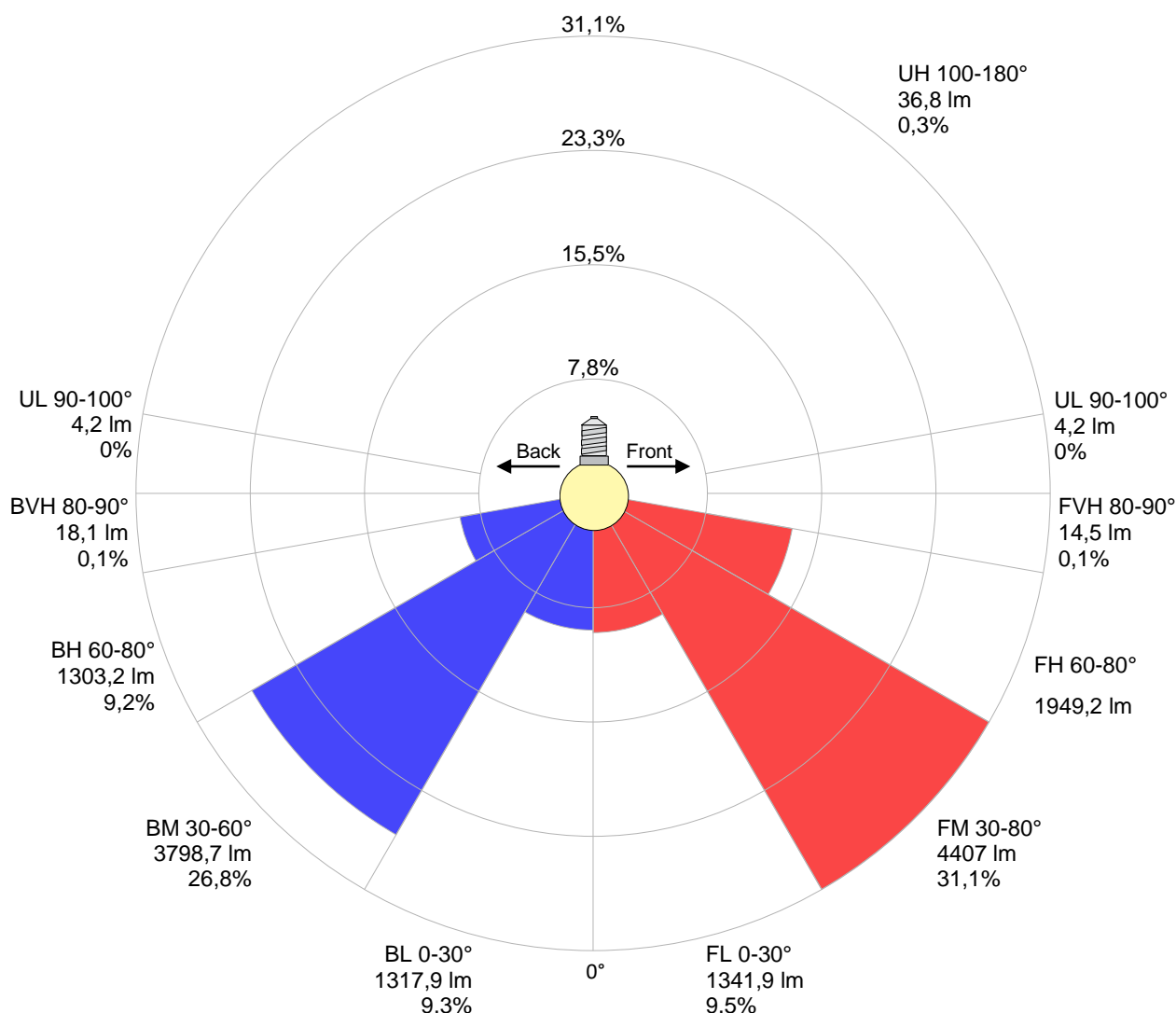
0°-10°	10°-20°	20°-30°	30°-40°	40°-50°	50°-60°	60°-70°	70°-80°	80°-90°
294 lm	877 lm	1488 lm	2140 lm	2795 lm	3272 lm	2769 lm	483 lm	32,3 lm
90°-100°	100°-110°	110°-120°	120°-130°	130°-140°	140°-150°	150°-160°	160°-170°	170°-180°
4,18 lm	5,74 lm	6,35 lm	6,30 lm	5,88 lm	5,13 lm	4,00 lm	2,56 lm	0,887 lm

Road report

LCS table

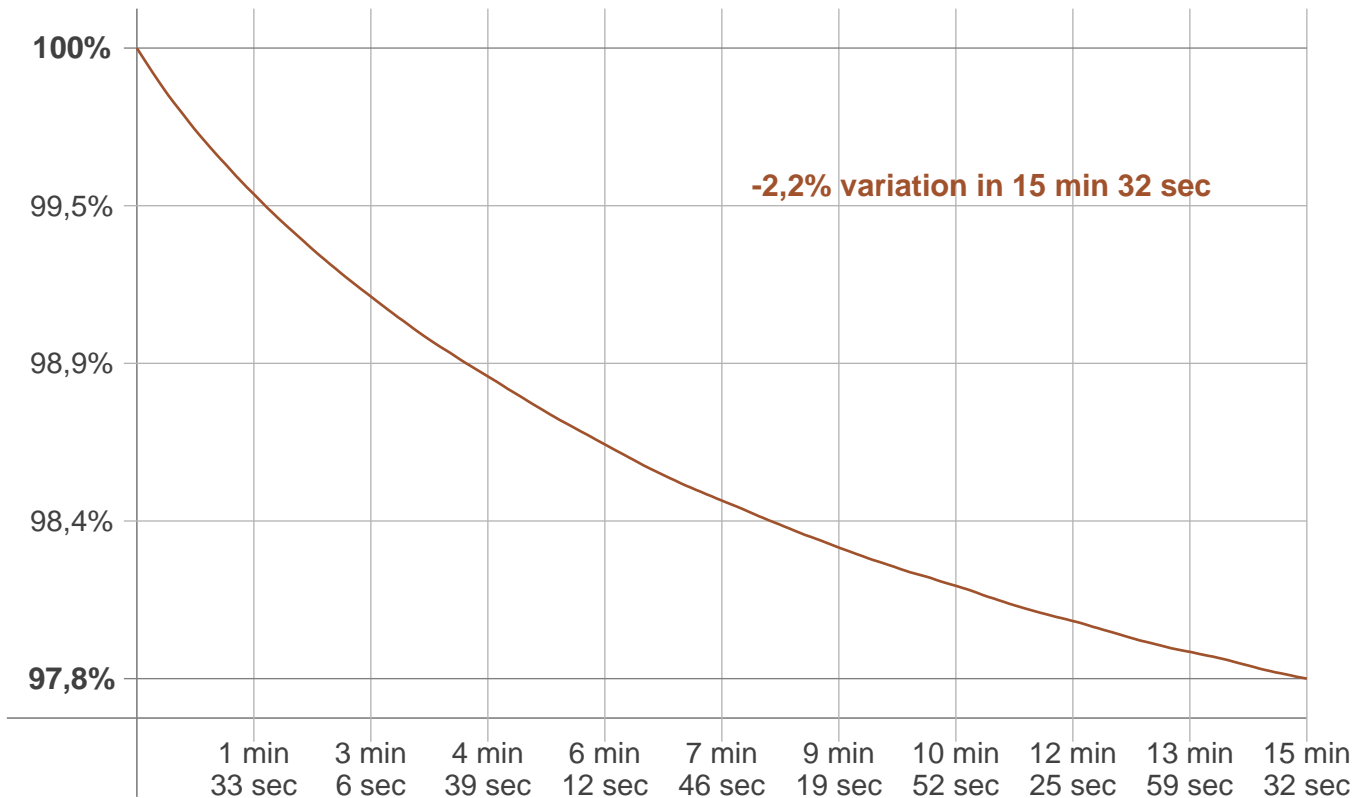
BUG rating:	B3 U2 G3	
Forward light	Lumens	Lumens %
Low(0-30):	1341,9	9,5%
Medium(30-60):	4407	31,1%
High(60-80):	1949,2	13,7%
Very high(80-90):	14,5	0,1%
Back light		
Low(0-30):	1317,9	9,3%
Medium(30-60):	3798,7	26,8%
High(60-80):	1303,2	9,2%
Very high(80-90):	18,1	0,1%
Uplight		
Low(90-100):	4,2	0%
High(100-180):	36,8	0,3%

LCS graph



Stabilization

Warmup curve



Warmup result

Warmup time:	15 min 32 sec
Warmup variation	-2,2%

Warmup conditions

Stable period:	15 min
Stable change max:	2,0%
Minimum time:	15 min

Color temperature change

CCT start	CCT change	CCT end
4796 K	+44 K	4840 K

Output change

Output start	Output change	Output end
14497 lm	-305 lm	14192 lm