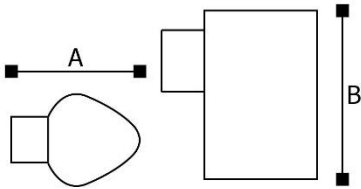


Luminaria para exterior



Dimensiones (mm)

A: 170; **B:** 200



Código

GL12603

Descripción

Luminaria tipo aplique, diseñada con módulos de LED integrado. Para sobreponer en pared o muro, con difusor en policarbonato transparente, con óptico para un mejor reparto lumínico y pantalla blanca.



Materiales y acabado

Cuerpo en aluminio extruido y secciones laterales en aluminio inyectado. Ambas con acabado en pintura poliéster electrostática texturizada. Cubierto con doble anti-corrosivo.

Color

Negro.

Características técnicas

LED	 27°	 30,000h	IP 65	IK 08
PF 0,97	THD <20%	°C 0-55	V 220-240	Hz 50/60

Fuente de luz

Módulos de LED.

Potencia Nominal	CRI	K	Lm / W	Lm de Salida
7W	>80	3000	71	459

Características de fuente de luz

- Color temperatura disponible 3000K (cálido).
- Marca LED: OSRAM. Marca Driver: ESPL.
- Potencia de Salida: 6,5W.

Light efficiency:



Light quality:



Color temperature:



Output: 459 lm

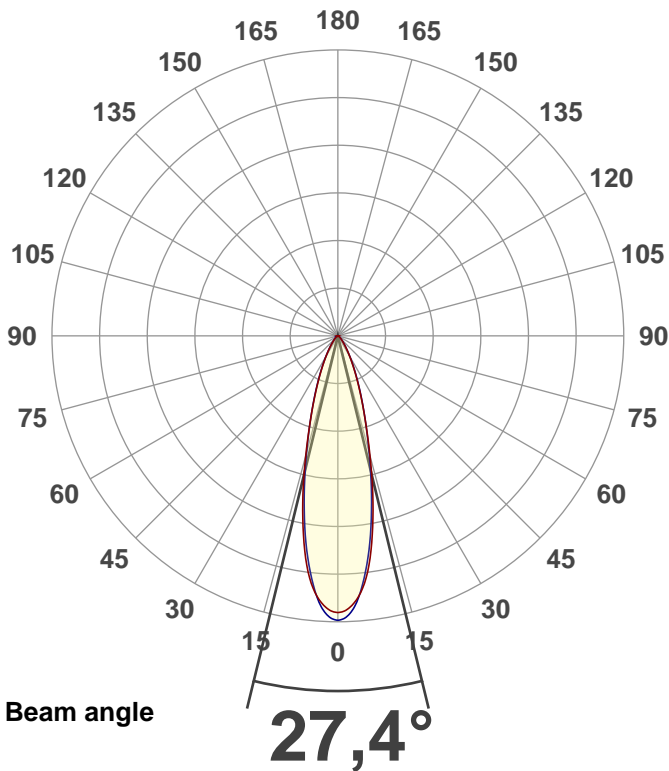
Peak: 1419 cd

Power: 6,5 W

PF: 0,97



Product name:
E0092-GL12603



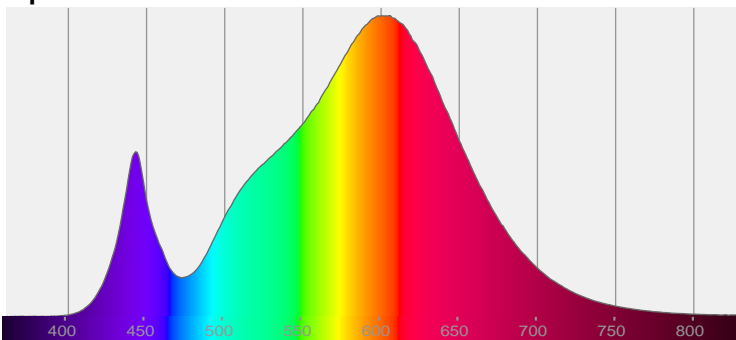
CIE 1931
x: 0,434
y: 0,403

THD Values:

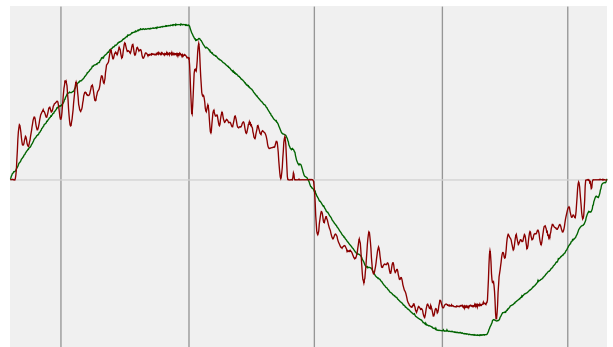
Voltage: 2,79%

Current: 13,93%

Spectra

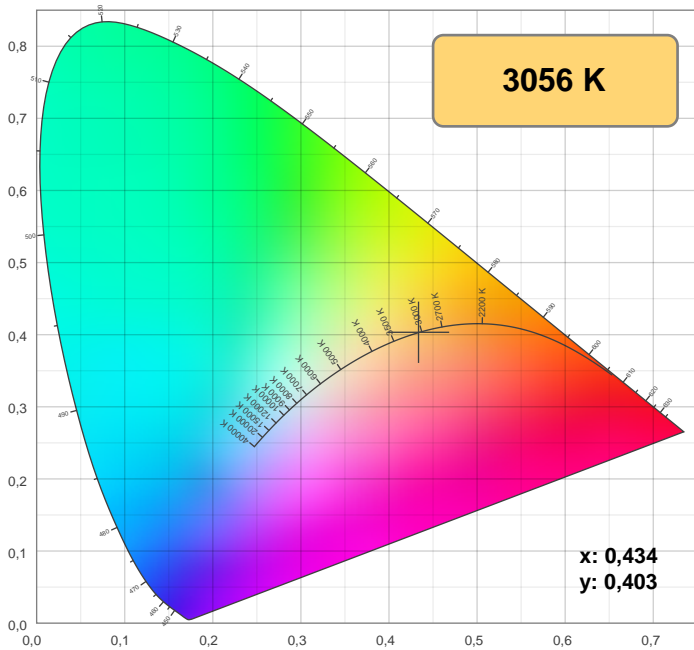


Power



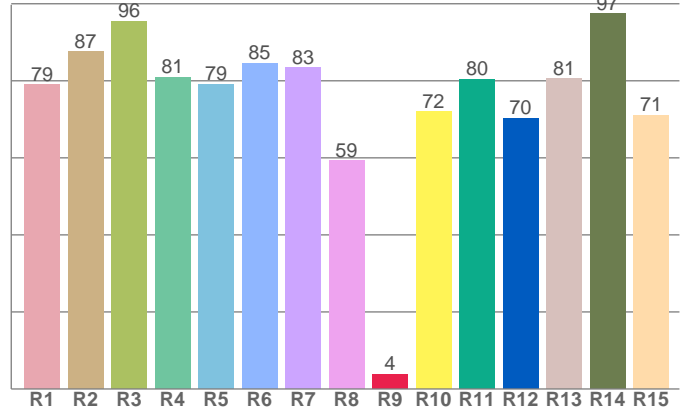
Voltage: 112 V
Current: 0,059 A
Frequency: 59,9 Hz

Color details



CIE 1931

CRI: 81,1 (R1-R8)

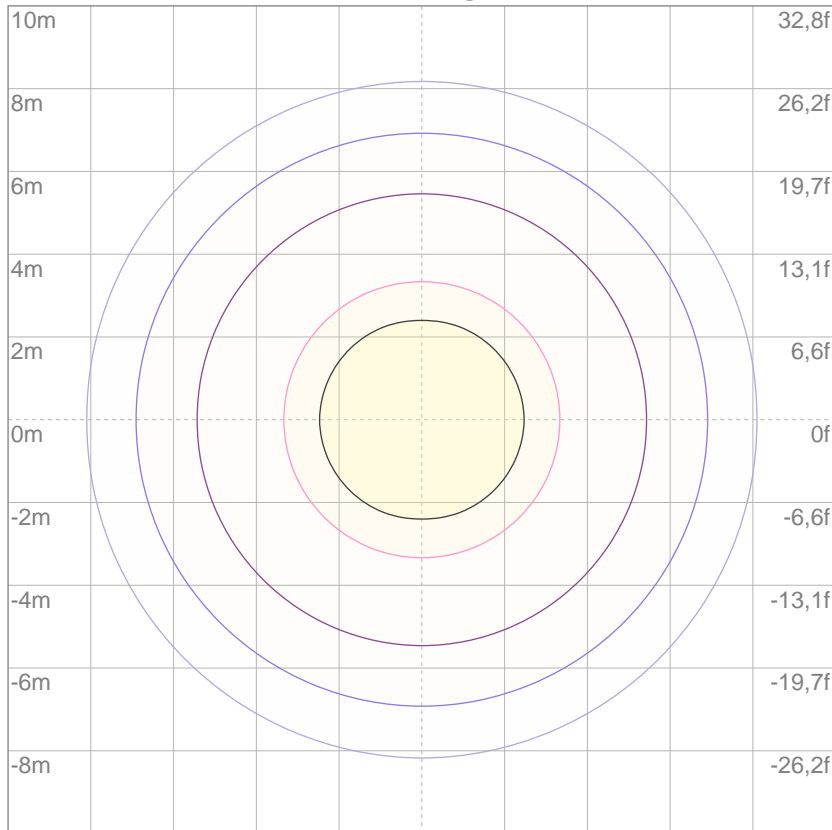


CRI R values, only R1-R8 are used to calculate final CRI value

R1	R2	R3	R4	R5	R6	R7	R8	9	R10	R11	R12	R13	R14	R15
79,0	87,5	95,5	80,9	79,1	84,5	83,4	59,2	3,8	71,9	80,5	70,3	80,6	97,4	71,0

ISO Diagrams

ISO lux diagram



Mounting height: 10 meters (33 f)

3%	0,420 lx
5%	0,700 lx
10%	1,40 lx
30%	4,20 lx
50%	7,00 lx

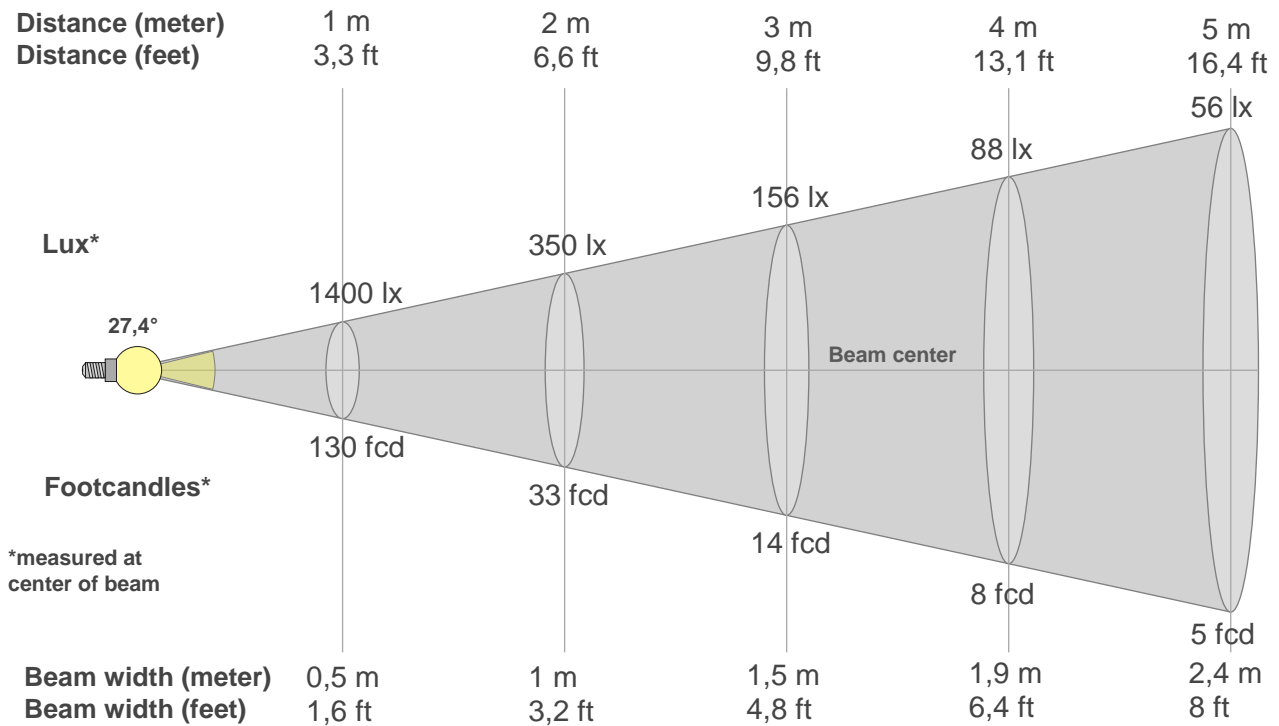
Conditions:

Number of c-planes: 4

Lux at center: 14,0 lx

Lux distribution on a surface when lamp is mounted at 10 meters from the surface.

Beam details



Beam intensities from 1-20m

1m	2m	3m	4m	5m	6m	7m	8m	9m	10m	11m	12m	13m	14m	15m	16m	17m	18m	19m	20m
3,3ft	6,6ft	9,8ft	13,1ft	16,4ft	19,7ft	23ft	26,2ft	29,5ft	32,8ft	36,1ft	39,4ft	42,7ft	45,9ft	49,2ft	52,5ft	55,8ft	59,1ft	62,3ft	65,6ft
1400lx	350lx	156lx	88lx	56lx	39lx	29lx	22lx	17lx	14lx	12lx	10lx	8lx	7lx	6lx	5lx	5lx	4lx	4lx	4lx
130,1fc	32,5fcd	14,5fcd	8,1fcd	5,2fcd	3,6fcd	2,7fcd	2fcd	1,6fcd	1,3fcd	1,1fcd	0,9fcd	0,8fcd	0,7fcd	0,6fcd	0,5fcd	0,5fcd	0,4fcd	0,4fcd	0,3fcd

Intensities in 0° c-plane

0°	2°	4°	6°	8°	10°	12°	14°	16°	18°	20°	22°	24°	26°	28°	30°	32°	34°	36°	38°
1400	1366	1322	1248	1137	994	843	691	555	444	357	287	231	185	148	119	95	75	59	47
100%	98%	94%	89%	81%	71%	60%	49%	40%	32%	26%	21%	17%	13%	11%	8%	7%	5%	4%	3%

Intensities in 90° c-plane

0°	2°	4°	6°	8°	10°	12°	14°	16°	18°	20°	22°	24°	26°	28°	30°	32°	34°	36°	38°
1400	1398	1334	1228	1099	955	808	667	544	443	360	292	235	189	151	120	95	76	61	49
100%	100%	95%	88%	78%	68%	58%	48%	39%	32%	26%	21%	17%	13%	11%	9%	7%	5%	4%	3%

Intensities in 180° c-plane

0°	2°	4°	6°	8°	10°	12°	14°	16°	18°	20°	22°	24°	26°	28°	30°	32°	34°	36°	38°
1400	1366	1322	1248	1137	994	843	691	555	444	357	287	231	185	148	119	95	75	59	47
100%	98%	94%	89%	81%	71%	60%	49%	40%	32%	26%	21%	17%	13%	11%	8%	7%	5%	4%	3%

Intensities in 270° c-plane

0°	2°	4°	6°	8°	10°	12°	14°	16°	18°	20°	22°	24°	26°	28°	30°	32°	34°	36°	38°
1400	1398	1334	1228	1099	955	808	667	544	443	360	292	235	189	151	120	95	76	61	49
100%	100%	95%	88%	78%	68%	58%	48%	39%	32%	26%	21%	17%	13%	11%	9%	7%	5%	4%	3%

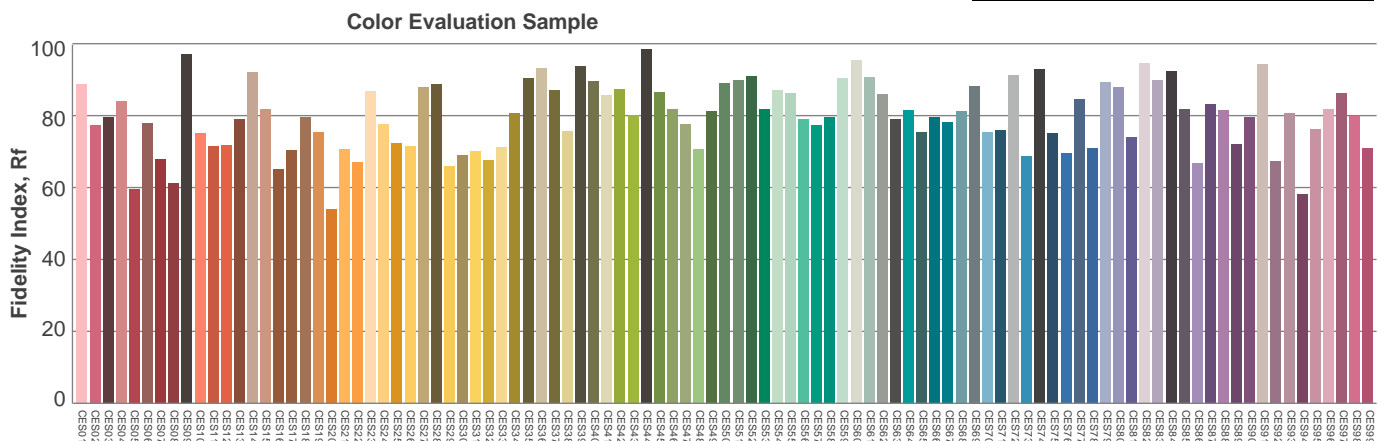
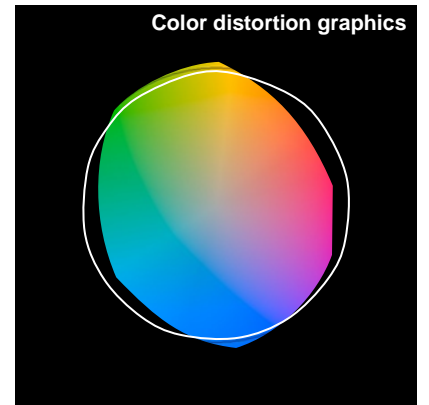
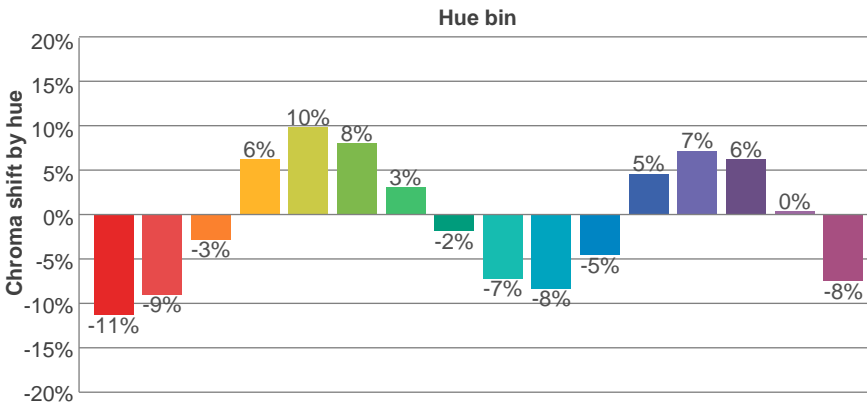
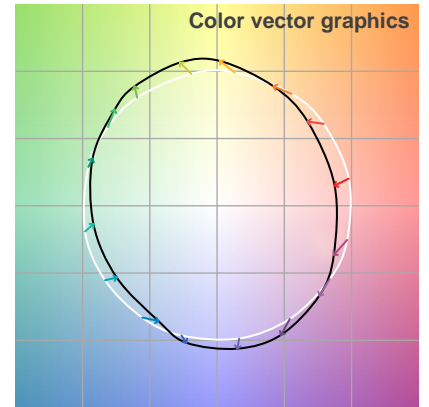
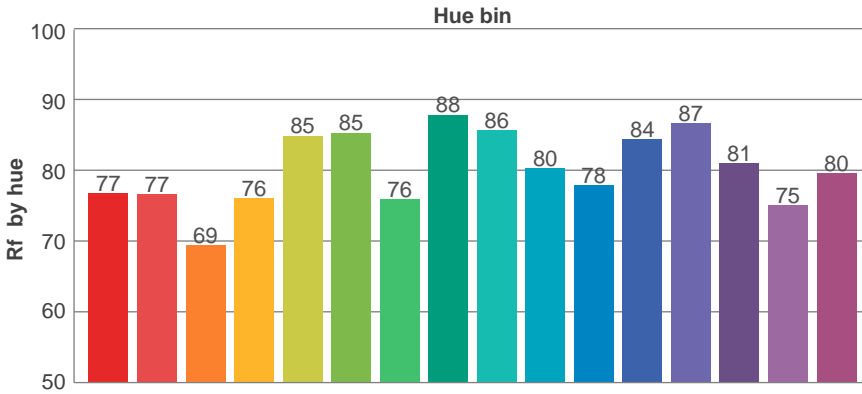
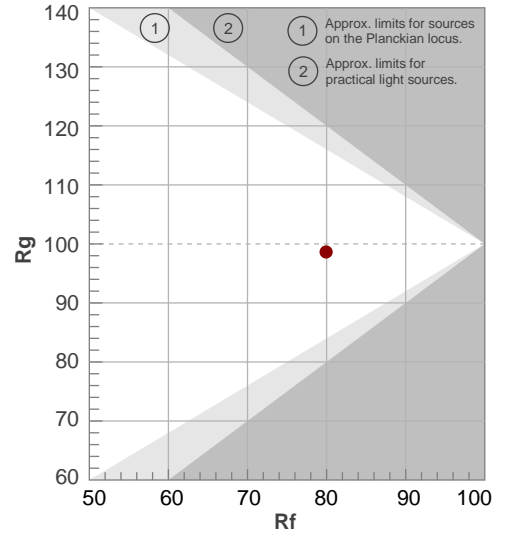
Beam angle 50%	Field angle 10%	Cutoff angle 2,5%	Intensity ratio in 120° cone	Intensity ratio in 90° cone
27,4°	57,2°	81,8°	98,6%	94,7%

TM30 details

Rf 79,9
Fidelity index Rf

Rg 98,6
Gammut index Rg

Hue Bin	Rf	Graphic shifts (%)	
		Chroma	Hue
1	77	-11%	-3%
2	77	-9%	8%
3	69	-3%	14%
4	76	6%	12%
5	85	10%	7%
6	85	8%	-3%
7	76	3%	-13%
8	88	-2%	-7%
9	86	-7%	-4%
10	80	-8%	3%
11	78	-5%	11%
12	84	5%	5%
13	87	7%	-3%
14	81	6%	-12%
15	75	0%	-14%
16	80	-8%	-13%



UGR

Glare Evaluation According to UGR

p Ceiling	70	70	50	50	30	70	70	50	50	30	
p Walls	50	30	50	30	30	50	30	50	30	30	
p Floor	20	20	20	20	20	20	20	20	20	20	
Room size X Y	Viewing direction at right angles to lamp axis					Viewing direction parallel to lamp axis					
2H	2H	11,8	12,5	12,1	12,7	12,9	11,9	12,7	12,2	12,8	13,0
	3H	11,9	12,6	12,2	12,8	13,0	12,1	12,7	12,4	13,0	13,2
	4H	11,9	12,5	12,2	12,8	13,0	12,1	12,7	12,4	12,9	13,2
	6H	11,8	12,4	12,2	12,7	13,0	12,0	12,6	12,3	12,8	13,1
	8H	11,8	12,3	12,1	12,6	12,9	12,0	12,5	12,3	12,8	13,1
	12H	11,8	12,3	12,1	12,6	12,9	11,9	12,4	12,3	12,7	13,1
4H	2H	11,9	12,5	12,2	12,7	13,0	12,0	12,6	12,3	12,8	13,1
	3H	12,0	12,5	12,4	12,8	13,1	12,2	12,7	12,5	13,0	13,3
	4H	12,0	12,4	12,4	12,8	13,1	12,2	12,6	12,5	12,9	13,3
	6H	11,9	12,3	12,3	12,7	13,1	12,1	12,5	12,5	12,8	13,2
	8H	11,9	12,2	12,3	12,6	13,0	12,1	12,4	12,5	12,8	13,2
	12H	11,9	12,1	12,3	12,6	13,0	12,0	12,3	12,5	12,7	13,2
8H	4H	11,9	12,3	12,3	12,6	13,0	12,1	12,4	12,5	12,8	13,2
	6H	11,9	12,1	12,3	12,5	13,0	12,0	12,3	12,5	12,7	13,2
	8H	11,8	12,0	12,3	12,5	12,9	12,0	12,2	12,5	12,6	13,1
	12H	11,8	11,9	12,3	12,4	12,9	11,9	12,1	12,4	12,6	13,1
12H	4H	11,9	12,2	12,3	12,6	13,0	12,1	12,3	12,5	12,7	13,2
	6H	11,8	12,0	12,3	12,5	12,9	12,0	12,2	12,5	12,6	13,1
	8H	11,8	11,9	12,3	12,4	12,9	11,9	12,1	12,4	12,6	13,1
Variation of the observer position for the luminaire distance S											
S = 1,0H	+2,8 / -2,5					+2,6 / -2,4					
S = 1,5H	+5,0 / -4,1					+4,8 / -3,7					
S = 2,0H	+6,8 / -5,6					+6,7 / -5,3					
Standard table	BK01					BK01					
Correction summand	-6,1					-5,9					
Corrected glare indices referring to 459 lm total luminous flux											

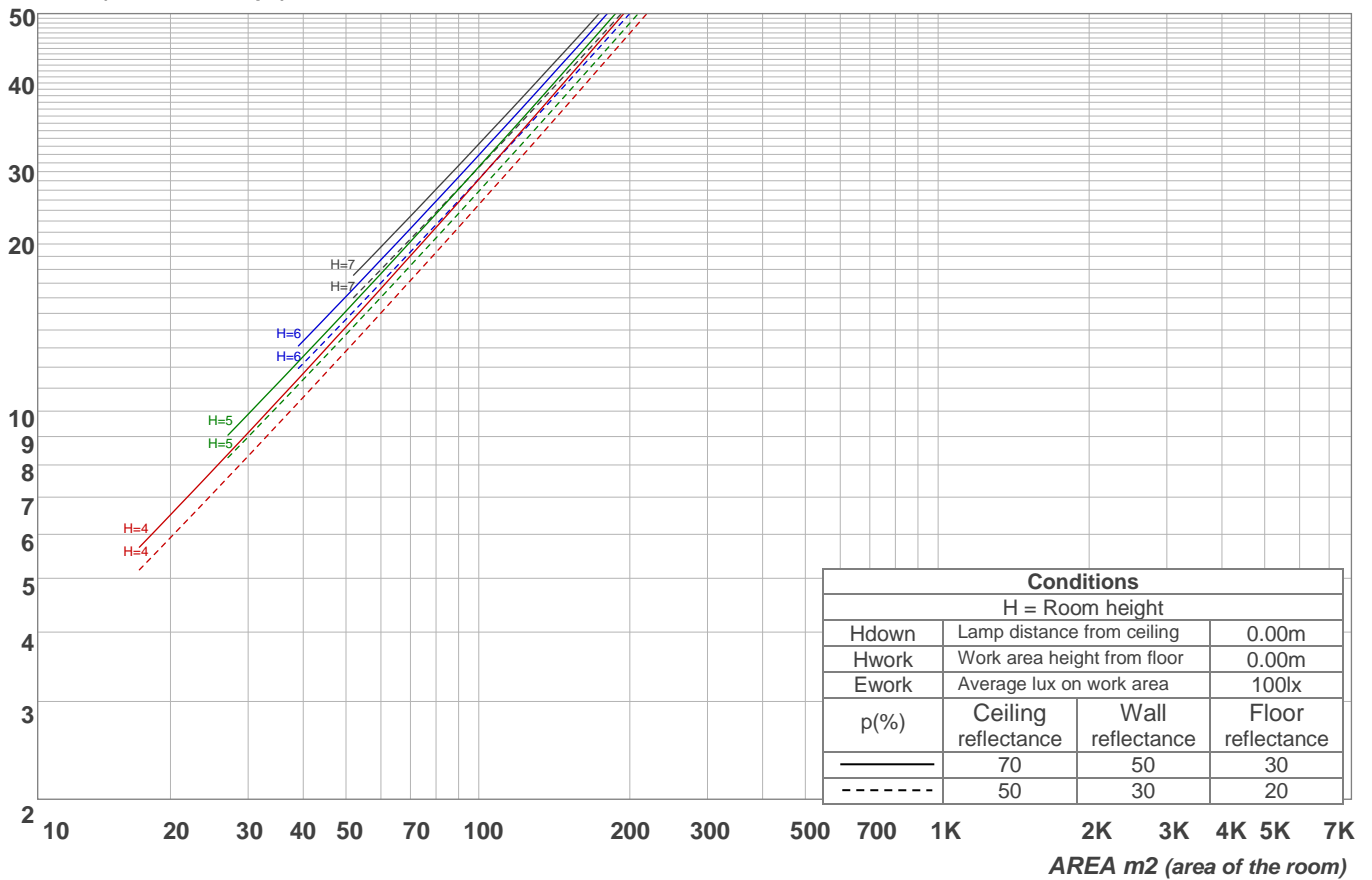
Light planning

Coefficients of Utilization

Ceiling reflectance	80				70				50			30			10			0			
Wall reflectance	70	50	30	10	70	50	30	10	50	30	10	50	30	10	50	30	10	0			
Floor reflectance	20	20	20	20	20	20	20	20	20	20	20	20	20	20	20	20	20	20	20	20	0
RCR	(RCR: Room Cavity Ratio) Room Values are expressed as percentage of Lumens delivered to the task surface																				
0	119	119	119	119	116	116	116	116	111	111	111	106	106	106	102	102	102	100	100		
1	114	112	109	107	112	109	107	106	105	104	102	102	100	99	98	97	96	95	95		
2	109	105	101	98	107	103	100	97	100	97	95	97	95	93	94	93	91	90	90		
3	105	99	95	91	103	98	94	91	95	92	89	93	90	88	91	88	86	85	85		
4	101	94	89	86	99	93	88	85	91	87	84	89	86	83	87	84	82	81	81		
5	97	89	84	81	95	88	84	80	87	83	80	85	82	79	84	81	78	77	77		
6	93	85	80	77	91	85	80	76	83	79	76	82	78	75	80	77	75	73	73		
7	89	82	76	73	88	81	76	73	80	75	72	79	75	72	78	74	72	70	70		
8	86	78	73	70	85	78	73	69	77	72	69	76	72	69	75	71	69	67	67		
9	83	75	70	67	82	75	70	67	74	69	66	73	69	66	72	69	66	65	65		
10	80	72	67	64	79	72	67	64	71	67	64	70	66	64	70	66	64	62	62		

LAMPS (number of lamps)

Luminaire budgetary diagram

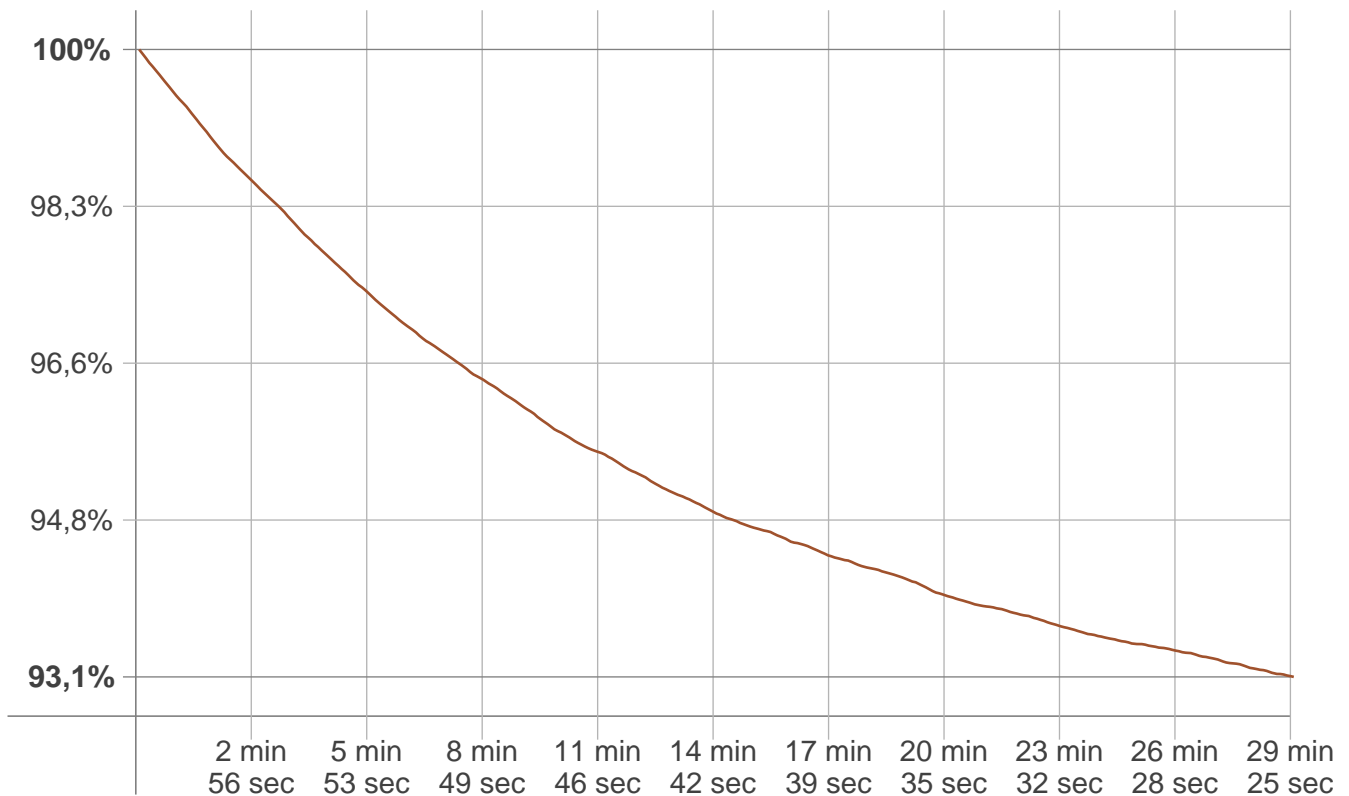


Zonal Lumen Summary

0°-10°	10°-20°	20°-30°	30°-40°	40°-50°	50°-60°	60°-70°	70°-80°	80°-90°
113 lm	169 lm	97,8 lm	43,6 lm	19,0 lm	9,91 lm	4,46 lm	1,06 lm	0,087 lm
90°-100°	100°-110°	110°-120°	120°-130°	130°-140°	140°-150°	150°-160°	160°-170°	170°-180°
0,044 lm	0,046 lm	0,045 lm	0,060 lm	0,095 lm	0,126 lm	0,153 lm	0,113 lm	0,030 lm

Stabilization

Warmup curve



Warmup result

Warmup time:	29 min 30 sec
Warmup variation	-6,9%

Warmup conditions

Stable period:	15 min
Stable change max:	2,0%
Minimum time:	15 min

Color temperature change

CCT start	CCT change	CCT end
3036 K	+20 K	3056 K

Output change

Output start	Output change	Output end
492 lm	-33 lm	459 lm