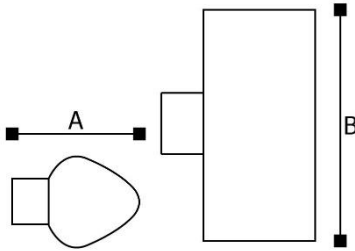


Luminaria para exterior



Dimensiones (mm)

A: 170; B: 250



Código

GL12604

Descripción

Luminaria tipo aplique directa-indirecta, diseñada con módulos de LED integrado. Para sobreponer en pared o muro, con difusor en policarbonato transparente, con óptico para un mejor reparto lumínico y pantalla blanca.



Materiales y acabado

Cuerpo en aluminio extruido y secciones laterales en aluminio inyectado. Ambas con acabado en pintura poliéster electrostática texturizada. Cubierto con doble anti-corrosivo.

Color

Negro.

Características técnicas

LED			IP 65	IK 08
PF 0,99	THD <10%	°C 0-55	V 220-240	Hz 50/60

Fuente de luz

Módulos de LED.

Potencia Nominal	CRI	K	Lm / W	Lm de Salida
13W	>80	3000	74	906

Características de fuente de luz

- Color temperatura disponible 3000K (cálido).
- Marca LED: OSRAM. Marca Driver: ESPL.
- Potencia de Salida: 12,2W.

Nota: Debido a continua investigación, nos reservamos el derecho de cambiar especificaciones sin previa notificación.



Light efficiency:



Light quality:



Color temperature:



Output: 906 lm

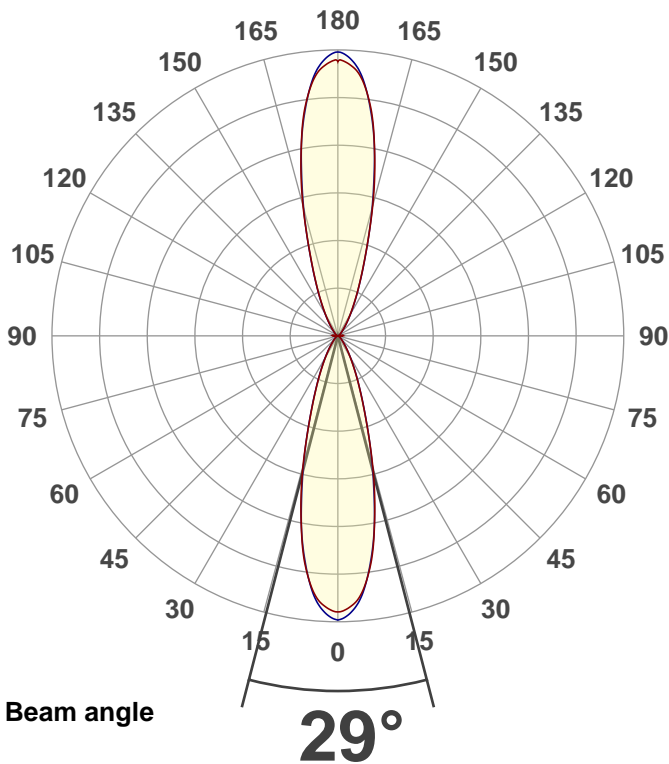
Peak: 1329 cd

Power: 12,2 W

PF: 0,99



Product name:
E0091-GL12604



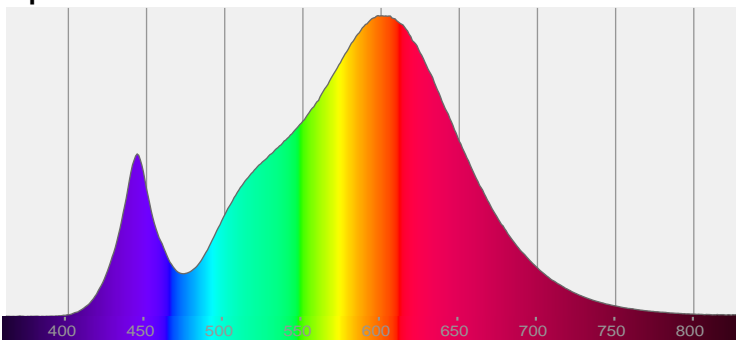
CIE 1931
x: 0,431
y: 0,403

THD Values:

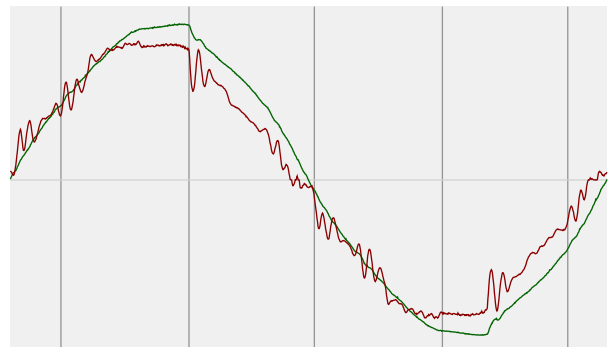
Voltage: 2,94%

Current: 6,03%

Spectra

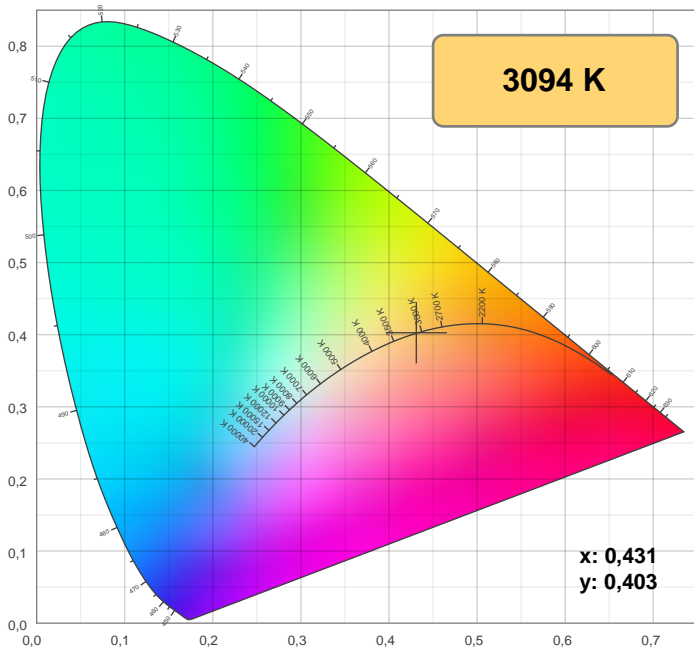


Power



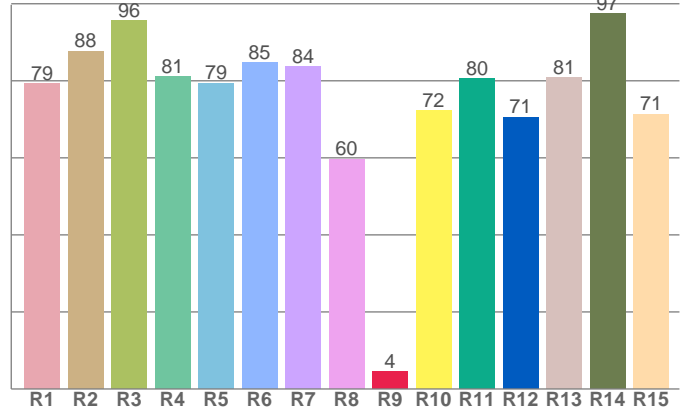
Voltage: 113 V
Current: 0,109 A
Frequency: 59,9 Hz

Color details



CIE 1931

CRI: 81,4 (R1-R8)

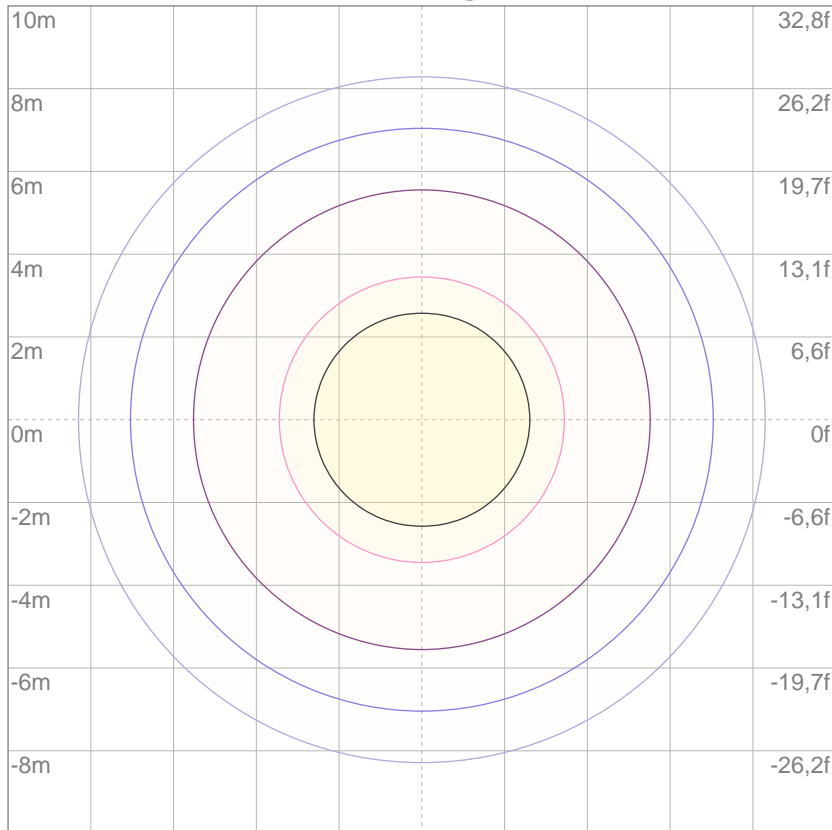


CRI R values, only R1-R8 are used to calculate final CRI value

R1	R2	R3	R4	R5	R6	R7	R8	9	R10	R11	R12	R13	R14	R15
79,2	87,7	95,6	81,0	79,3	84,7	83,7	59,7	4,5	72,3	80,5	70,5	80,8	97,4	71,3

ISO Diagrams

ISO lux diagram



Mounting height: 10 meters (33 f)

3%	0,393 lx
5%	0,655 lx
10%	1,31 lx
30%	3,93 lx
50%	6,55 lx

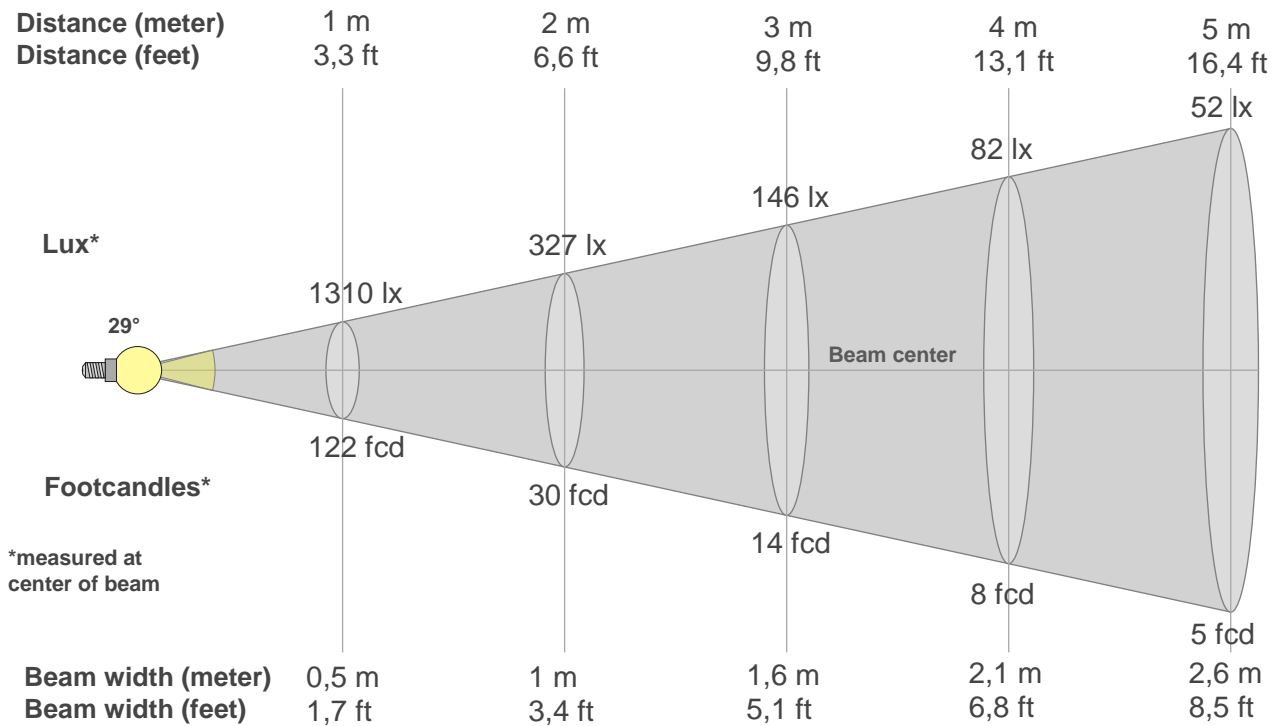
Conditions:

Number of c-planes: 4

Lux at center: 13,1 lx

Lux distribution on a surface when lamp is mounted at 10 meters from the surface.

Beam details



Beam intensities from 1-20m

1m	2m	3m	4m	5m	6m	7m	8m	9m	10m	11m	12m	13m	14m	15m	16m	17m	18m	19m	20m
3,3ft	6,6ft	9,8ft	13,1ft	16,4ft	19,7ft	23ft	26,2ft	29,5ft	32,8ft	36,1ft	39,4ft	42,7ft	45,9ft	49,2ft	52,5ft	55,8ft	59,1ft	62,3ft	65,6ft
1310lx	327lx	146lx	82lx	52lx	36lx	27lx	20lx	16lx	13lx	11lx	9lx	8lx	7lx	6lx	5lx	5lx	4lx	4lx	3lx
121,7fcd	30,4fcd	13,5fcd	7,6fcd	4,9fcd	3,4fcd	2,5fcd	1,9fcd	1,5fcd	1,2fcd	1fcd	0,8fcd	0,7fcd	0,6fcd	0,5fcd	0,5fcd	0,4fcd	0,4fcd	0,3fcd	0,3fcd

Intensities in 0° c-plane

0°	9°	18°	27°	36°	45°	54°	63°	72°	81°	90°	99°	108°	117°	126°	135°	144°	153°	162°	171°
1310	1032	442	161	59	24	11	6	2	0	0	0	2	6	11	24	59	161	442	1032
100%	79%	34%	12%	5%	2%	1%	0%	0%	0%	0%	0%	0%	0%	1%	2%	5%	12%	34%	79%

Intensities in 90° c-plane

0°	9°	18°	27°	36°	45°	54°	63°	72°	81°	90°	99°	108°	117°	126°	135°	144°	153°	162°	171°
1310	1023	443	164	60	24	12	7	3	1	0	1	3	7	12	24	60	164	443	1023
100%	78%	34%	13%	5%	2%	1%	1%	0%	0%	0%	0%	0%	1%	1%	2%	5%	13%	34%	78%

Intensities in 180° c-plane

0°	9°	18°	27°	36°	45°	54°	63°	72°	81°	90°	99°	108°	117°	126°	135°	144°	153°	162°	171°
1310	1032	442	161	59	24	11	6	2	0	0	0	2	6	11	24	59	161	442	1032
100%	79%	34%	12%	5%	2%	1%	0%	0%	0%	0%	0%	0%	0%	1%	2%	5%	12%	34%	79%

Intensities in 270° c-plane

0°	9°	18°	27°	36°	45°	54°	63°	72°	81°	90°	99°	108°	117°	126°	135°	144°	153°	162°	171°
1310	1023	443	164	60	24	12	7	3	1	0	1	3	7	12	24	60	164	443	1023
100%	78%	34%	13%	5%	2%	1%	1%	0%	0%	0%	0%	0%	1%	1%	2%	5%	13%	34%	78%

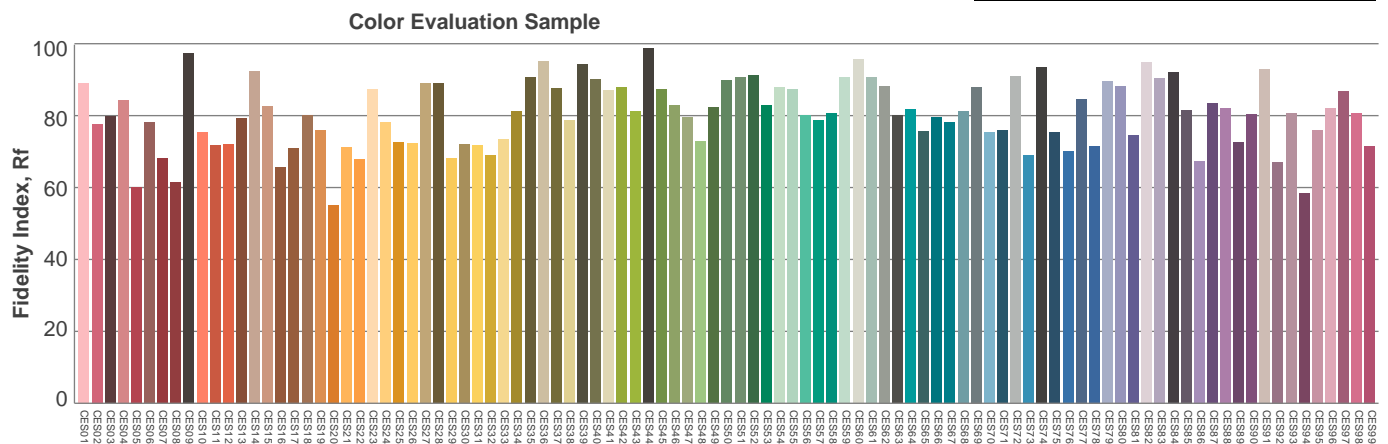
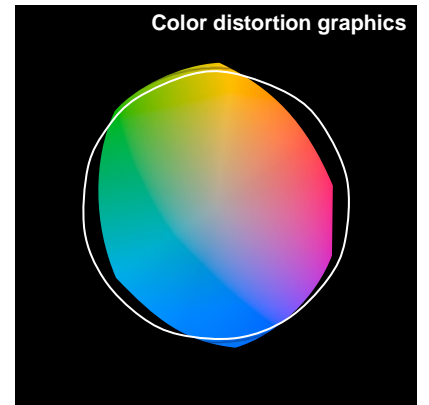
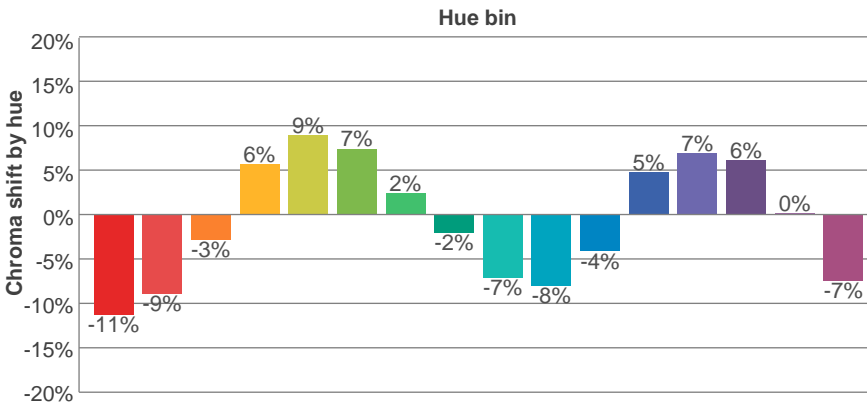
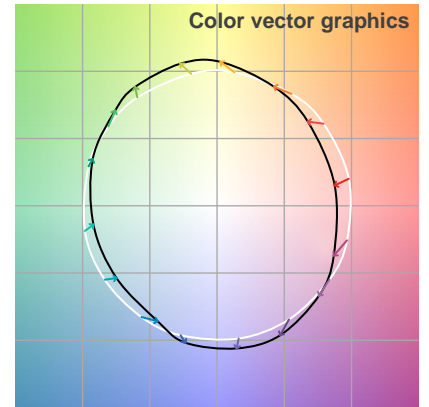
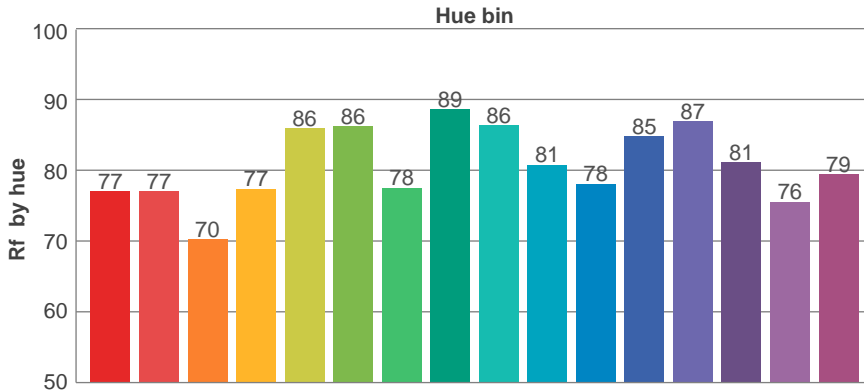
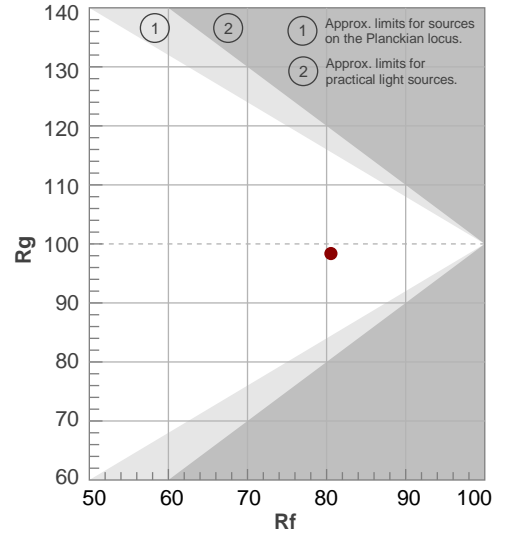
Beam angle 50%	Field angle 10%	Cutoff angle 2,5%	Intensity ratio in 120° cone	Intensity ratio in 90° cone
29°	360°	360°	49,2%	47,2%

TM30 details

Rf 80,5
Fidelity index Rf

Rg 98,4
Gammut index Rg

Hue Bin	R _f	Graphic shifts (%)	
		Chroma	Hue
1	77	-11%	-3%
2	77	-9%	8%
3	70	-3%	14%
4	77	6%	12%
5	86	9%	6%
6	86	7%	-3%
7	78	2%	-13%
8	89	-2%	-6%
9	86	-7%	-3%
10	81	-8%	4%
11	78	-4%	12%
12	85	5%	5%
13	87	7%	-3%
14	81	6%	-12%
15	76	0%	-14%
16	79	-7%	-13%



UGR

Glare Evaluation According to UGR

p Ceiling	70	70	50	50	30	70	70	50	50	30	
p Walls	50	30	50	30	30	50	30	50	30	30	
p Floor	20	20	20	20	20	20	20	20	20	20	
Room size X Y	Viewing direction at right angles to lamp axis					Viewing direction parallel to lamp axis					
2H	2H	8,4	9,0	9,3	9,8	10,9	8,6	9,2	9,5	10,0	11,1
	3H	8,4	9,0	9,3	9,8	10,9	8,8	9,4	9,7	10,2	11,3
	4H	8,3	8,8	9,3	9,7	10,9	8,8	9,3	9,8	10,2	11,3
	6H	8,2	8,7	9,2	9,6	10,7	8,7	9,2	9,7	10,1	11,3
	8H	8,2	8,6	9,1	9,5	10,7	8,7	9,1	9,6	10,0	11,2
	12H	8,1	8,5	9,1	9,4	10,6	8,6	9,0	9,6	10,0	11,1
4H	2H	8,3	8,8	9,2	9,7	10,8	8,5	9,0	9,4	9,9	11,0
	3H	8,4	8,8	9,4	9,7	10,9	8,8	9,2	9,7	10,1	11,3
	4H	8,3	8,7	9,3	9,6	10,9	8,8	9,2	9,8	10,1	11,4
	6H	8,2	8,5	9,2	9,5	10,7	8,7	9,0	9,7	10,0	11,3
	8H	8,2	8,4	9,2	9,4	10,7	8,7	9,0	9,7	9,9	11,2
	12H	8,1	8,3	9,1	9,3	10,6	8,6	8,9	9,7	9,9	11,2
8H	4H	8,2	8,5	9,2	9,4	10,7	8,7	8,9	9,7	9,9	11,2
	6H	8,1	8,3	9,1	9,3	10,6	8,6	8,8	9,6	9,8	11,1
	8H	8,0	8,2	9,0	9,2	10,5	8,5	8,7	9,6	9,7	11,1
	12H	7,9	8,1	9,0	9,1	10,5	8,5	8,7	9,5	9,7	11,0
12H	4H	8,1	8,4	9,1	9,3	10,6	8,6	8,8	9,6	9,8	11,1
	6H	8,0	8,2	9,0	9,2	10,5	8,5	8,7	9,5	9,7	11,0
	8H	7,9	8,1	9,0	9,1	10,5	8,5	8,6	9,5	9,6	11,0
Variation of the observer position for the luminaire distance S											
S = 1,0H	+2,5 / -2,2					+2,3 / -1,8					
S = 1,5H	+4,7 / -3,4					+4,3 / -2,2					
S = 2,0H	+6,5 / -4,8					+6,0 / -3,6					
Standard table	BK01					BK01					
Correction summand	-8,3					-7,9					
Corrected glare indices referring to 906 lm total luminous flux											

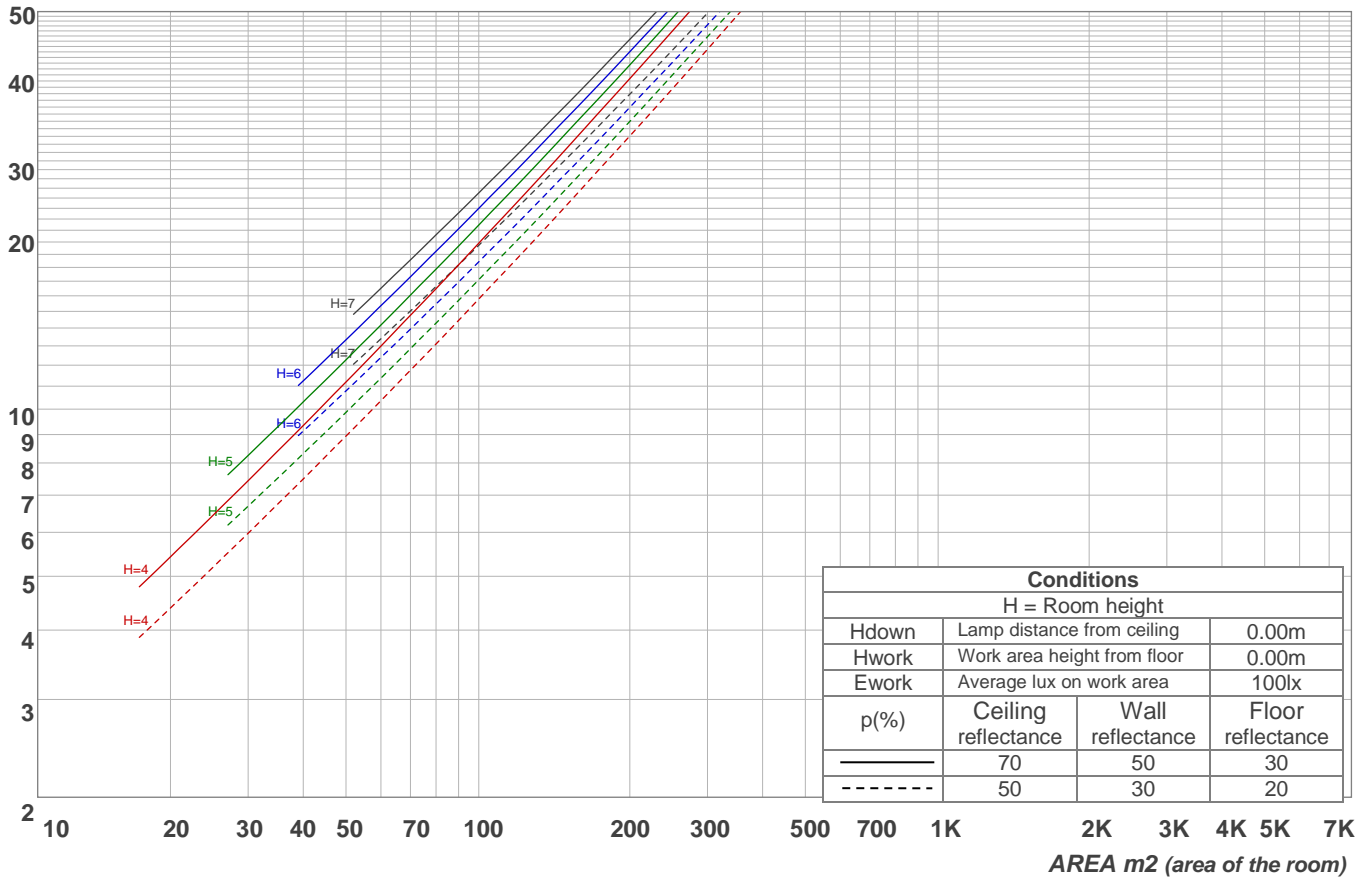
Light planning

Coefficients of Utilization

Ceiling reflectance	80				70				50			30			10			0
Wall reflectance	70	50	30	10	70	50	30	10	50	30	10	50	30	10	50	30	10	0
Floor reflectance	20	20	20	20	20	20	20	20	20	20	20	20	20	20	20	20	20	0
RCR	(RCR: Room Cavity Ratio)																	
	Room Values are expressed as percentage of Lumens delivered to the task surface																	
0	107	107	107	107	99	99	99	99	83	83	83	69	69	69	56	56	56	50
1	100	97	94	92	93	90	88	85	77	75	74	65	64	63	54	53	52	47
2	94	88	84	80	87	82	79	75	71	68	66	61	59	57	51	50	49	45
3	88	81	76	71	82	76	71	67	66	63	60	57	55	53	49	47	46	42
4	83	75	69	64	77	70	65	61	62	58	55	54	51	49	46	45	43	40
5	78	69	63	58	73	65	60	56	58	54	51	51	48	46	44	43	41	38
6	74	64	58	54	69	61	55	51	54	50	47	48	45	43	43	41	39	37
7	70	60	54	50	65	57	52	48	51	47	44	46	43	41	41	39	37	35
8	66	57	50	46	62	54	48	45	49	45	42	44	41	39	39	37	36	34
9	63	53	47	43	59	51	46	42	46	42	39	42	39	37	38	36	34	32
10	60	50	45	41	57	48	43	40	44	40	37	40	37	35	36	34	33	31

LAMPS (number of lamps)

Luminaire budgetary diagram

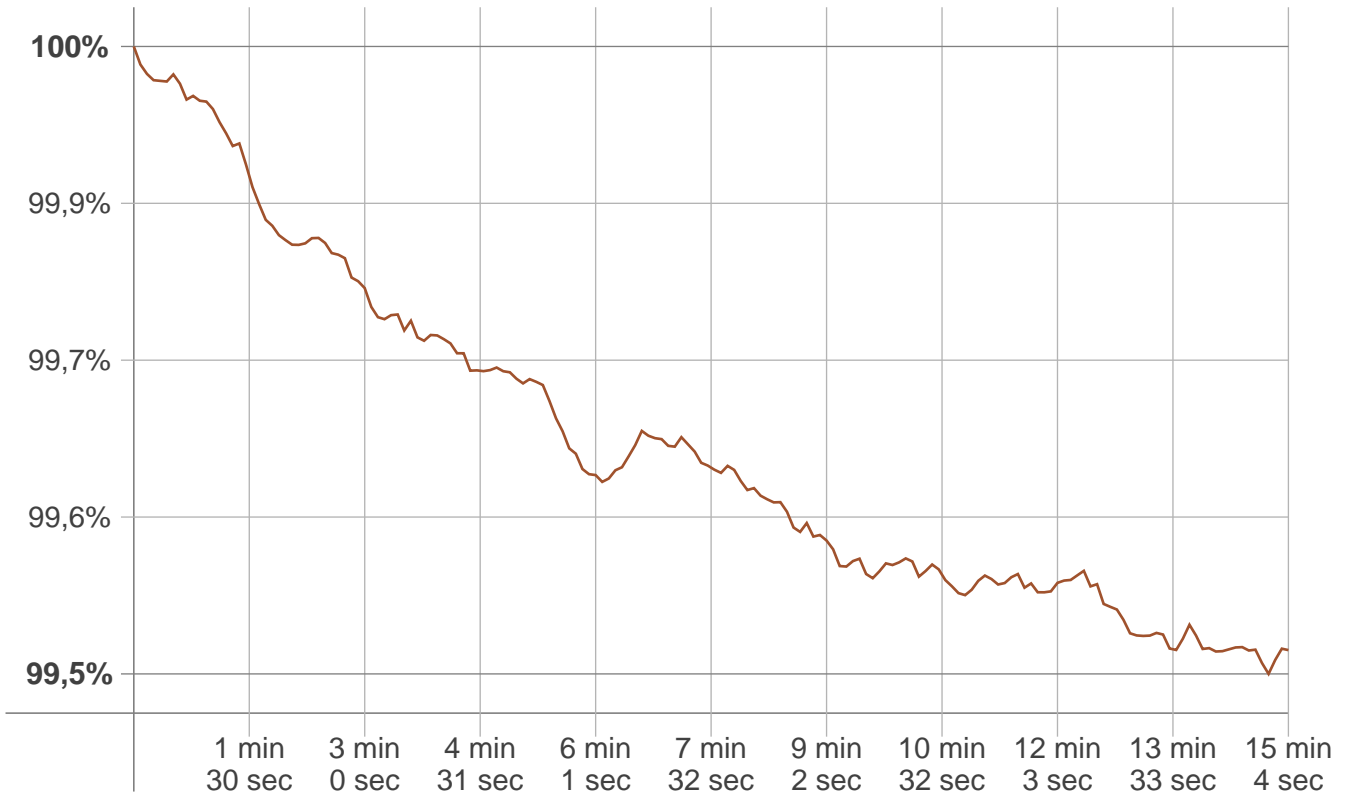


Zonal Lumen Summary

0°-10°	10°-20°	20°-30°	30°-40°	40°-50°	50°-60°	60°-70°	70°-80°	80°-90°
108 lm	170 lm	95,2 lm	43,1 lm	18,9 lm	10,0 lm	5,39 lm	1,67 lm	0,431 lm
90°-100°	100°-110°	110°-120°	120°-130°	130°-140°	140°-150°	150°-160°	160°-170°	170°-180°
0,432 lm	1,67 lm	5,39 lm	10,0 lm	18,9 lm	43,1 lm	95,2 lm	170 lm	108 lm

Stabilization

Warmup curve



Warmup result

Warmup time:	15 min 4 sec
Warmup variation	-0,5%

Warmup conditions

Stable period:	15 min
Stable change max:	2,0%
Minimum time:	15 min

Color temperature change

CCT start	CCT change	CCT end
3092 K	+2 K	3094 K

Output change

Output start	Output change	Output end
910 lm	-4 lm	906 lm