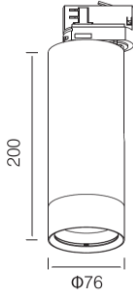


Luminaria para interior



Dimensiones (mm)

Ancho: Ø76
Alto: 200.



Código

HKT8596B

Descripción

Luminaria tipo reflector, diseñada con COB de LED integrado. Compuesta en la parte interna por un óptico especular y un difusor en acrílico transparente.




Materiales y acabado

Cuerpo en aluminio inyectado con acabado en pintura poliéster electrostática texturizada.

Color

Blanco.

Características técnicas

LED	 26°	 30,000h	IP 20	
PF 0,99	THD <10%	°C 0-55	V 120	

Fuente de luz

Regleta de LED.

Potencia Nominal	CRI	K	Lm / W	Lm de Salida
30W	>80	3000	87	2356

Características de fuente de luz

- Color temperatura disponible 3000K (cálido).
- Marca LED: LUMENS.
- Potencia de Salida: 27,1W.

Nota: Debido a continua investigación, nos reservamos el derecho de cambiar especificaciones sin previa notificación.



Light efficiency:



Light quality:



Color temperature:



Output: 2356 lm

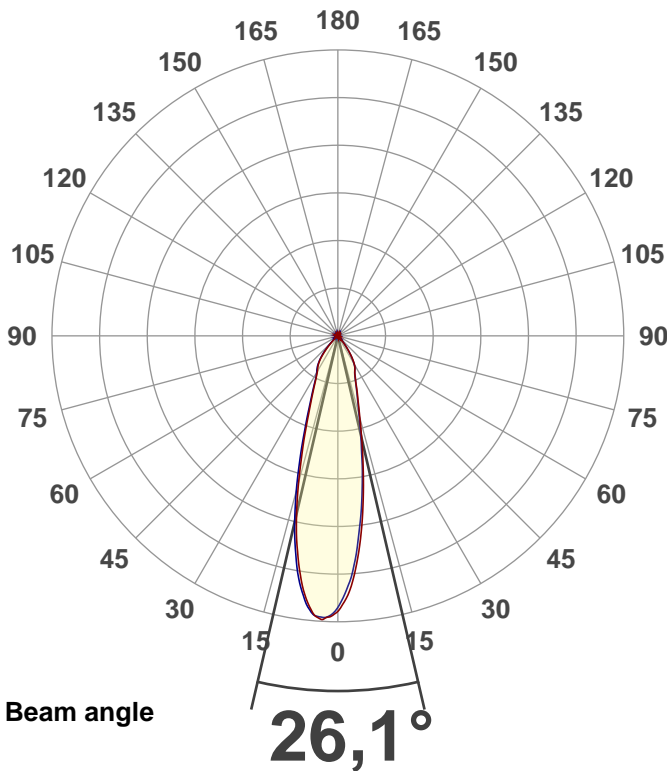
Peak: 6575 cd

Power: 27,1 W

PF: 0,99



Product name:
E0172-HKT8596B



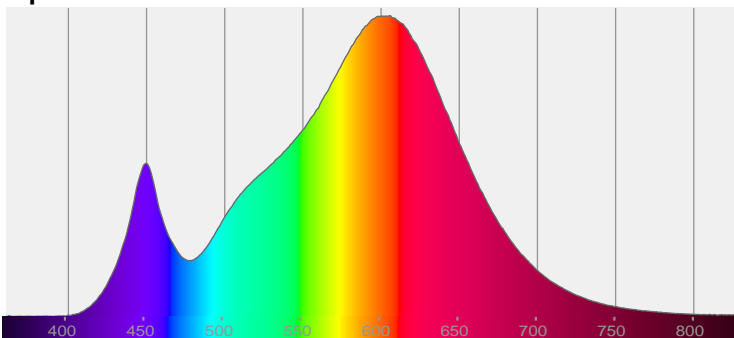
CIE 1931
x: 0,432
y: 0,398

THD Values:

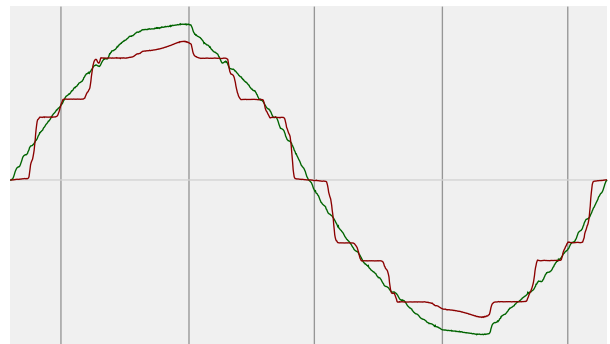
Voltage: 2,88%

Current: 9,8%

Spectra

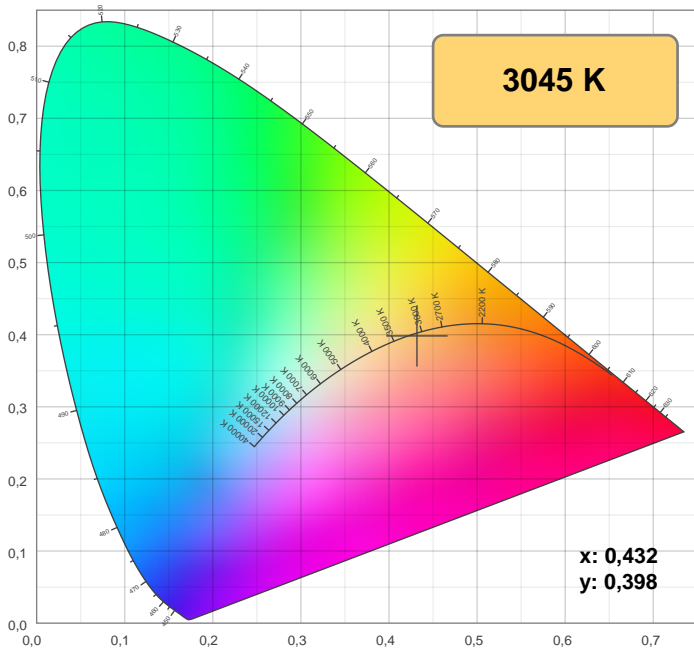


Power



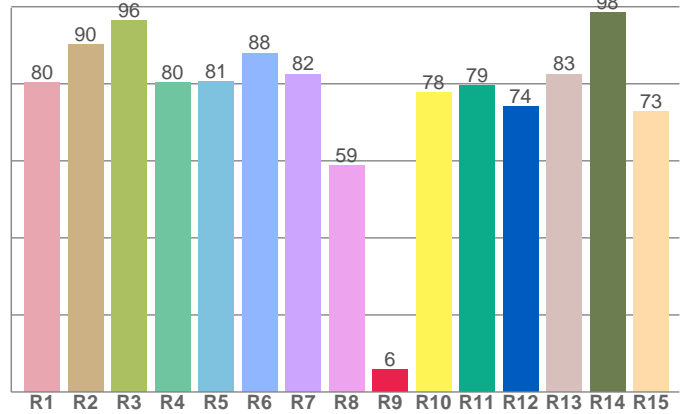
Voltage: 115 V
Current: 0,238 A
Frequency: 60,1 Hz

Color details



CIE 1931

CRI: 82,1 (R1-R8)

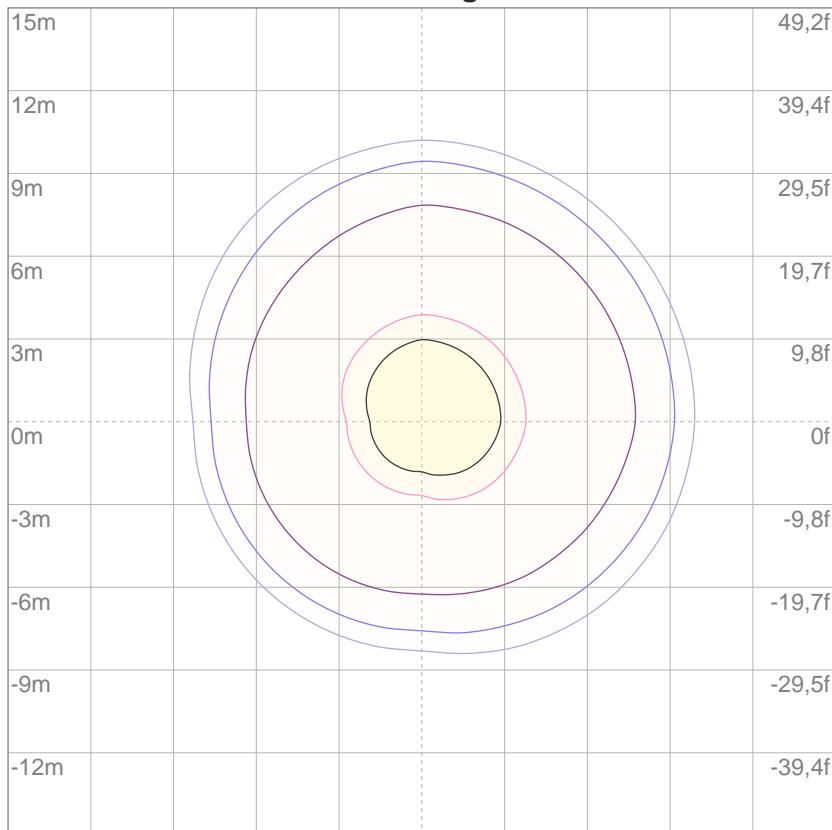


CRI R values, only R1-R8 are used to calculate final CRI value

R	R1	R2	R3	R4	R5	R6	R7	R8	9	R10	R11	R12	R13	R14	R15
Value	80,3	90,2	96,4	80,3	80,6	87,9	82,5	58,8	5,8	77,7	79,4	74,1	82,5	98,5	72,7

ISO Diagrams

ISO lux diagram



Mounting height: 10 meters (33 f)

3%	1,90 lx
5%	3,16 lx
10%	6,33 lx
30%	19,0 lx
50%	31,6 lx

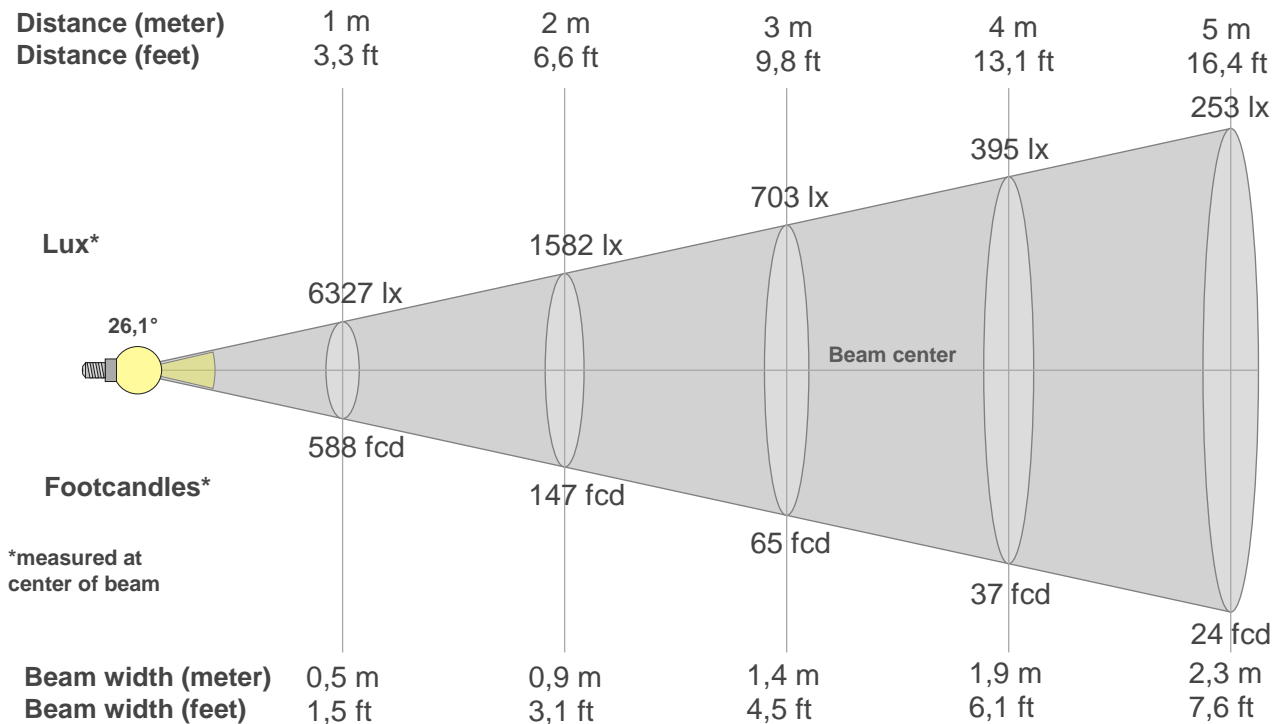
Conditions:

Number of c-planes: 4

Lux at center: 63,3 lx

Lux distribution on a surface when lamp is mounted at 10 meters from the surface.

Beam details



Beam intensities from 1-20m

1m	2m	3m	4m	5m	6m	7m	8m	9m	10m	11m	12m	13m	14m	15m	16m	17m	18m	19m	20m
3,3ft	6,6ft	9,8ft	13,1ft	16,4ft	19,7ft	23ft	26,2ft	29,5ft	32,8ft	36,1ft	39,4ft	42,7ft	45,9ft	49,2ft	52,5ft	55,8ft	59,1ft	62,3ft	65,6ft
6327lx	1582lx	703lx	395lx	253lx	176lx	129lx	99lx	78lx	63lx	52lx	44lx	37lx	32lx	28lx	25lx	22lx	20lx	18lx	16lx
587,8fcd	146,9fcd	65,3fcd	36,7fcd	23,5fcd	16,3fcd	12fcd	9,2fcd	7,3fcd	5,9fcd	4,9fcd	4,1fcd	3,5fcd	3fcd	2,6fcd	2,3fcd	2fcd	1,8fcd	1,6fcd	1,5fcd

Intensities in 0° c-plane

0°	2°	4°	6°	8°	10°	12°	14°	16°	18°	20°	22°	24°	26°	28°	30°	32°	34°	36°	38°
6327	6042	5519	4856	4128	3408	2754	2199	1779	1488	1267	1093	971	896	840	764	659	538	406	279
100%	95%	87%	77%	65%	54%	44%	35%	28%	24%	20%	17%	15%	14%	13%	12%	10%	8%	6%	4%

Intensities in 90° c-plane

0°	2°	4°	6°	8°	10°	12°	14°	16°	18°	20°	22°	24°	26°	28°	30°	32°	34°	36°	38°
6327	5868	5329	4627	3945	3263	2619	2111	1725	1444	1232	1069	960	892	835	747	632	511	384	269
100%	93%	84%	73%	62%	52%	41%	33%	27%	23%	19%	17%	15%	14%	13%	12%	10%	8%	6%	4%

Intensities in 180° c-plane

0°	2°	4°	6°	8°	10°	12°	14°	16°	18°	20°	22°	24°	26°	28°	30°	32°	34°	36°	38°
6327	6513	6539	6292	5860	5269	4612	3877	3151	2547	2042	1675	1408	1203	1053	948	880	811	722	607
100%	103%	103%	99%	93%	83%	73%	61%	50%	40%	32%	26%	22%	19%	17%	15%	14%	13%	11%	10%

Intensities in 270° c-plane

0°	2°	4°	6°	8°	10°	12°	14°	16°	18°	20°	22°	24°	26°	28°	30°	32°	34°	36°	38°
6327	6496	6510	6353	5967	5445	4791	4077	3360	2704	2161	1754	1463	1242	1076	977	913	839	743	639
100%	103%	103%	100%	94%	86%	76%	64%	53%	43%	34%	28%	23%	20%	17%	15%	14%	13%	12%	10%

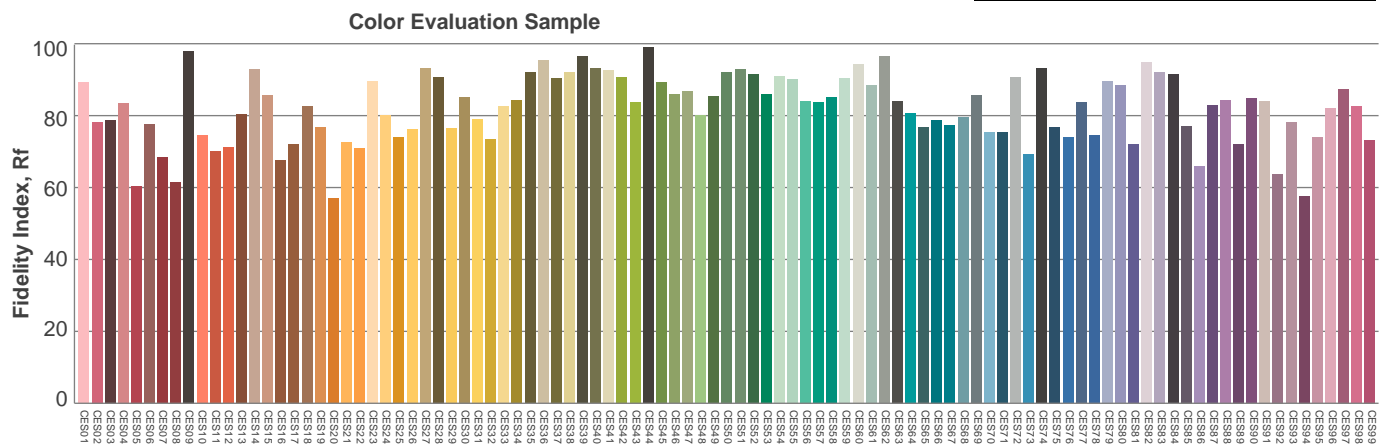
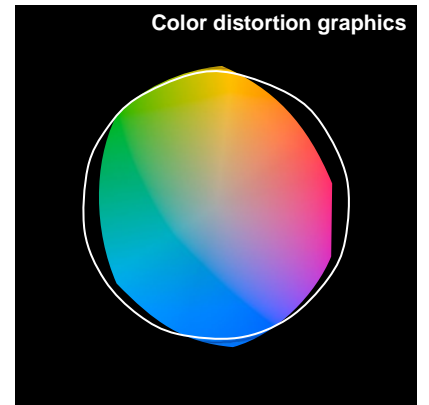
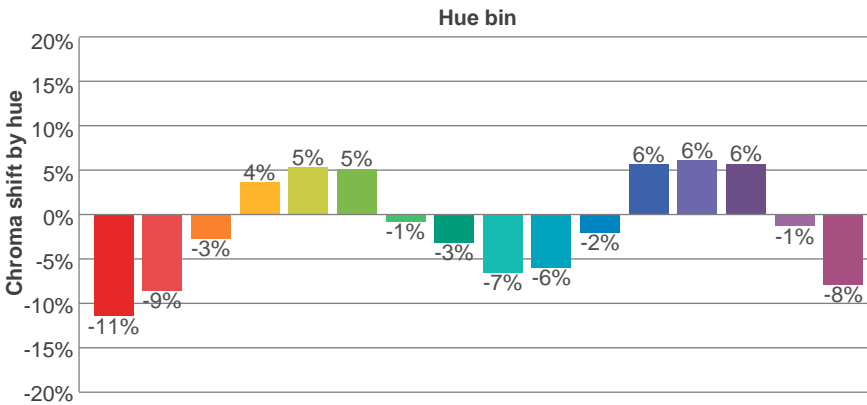
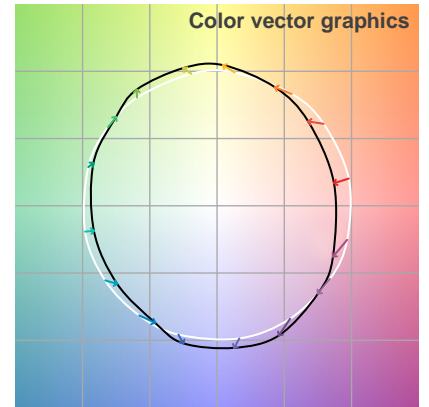
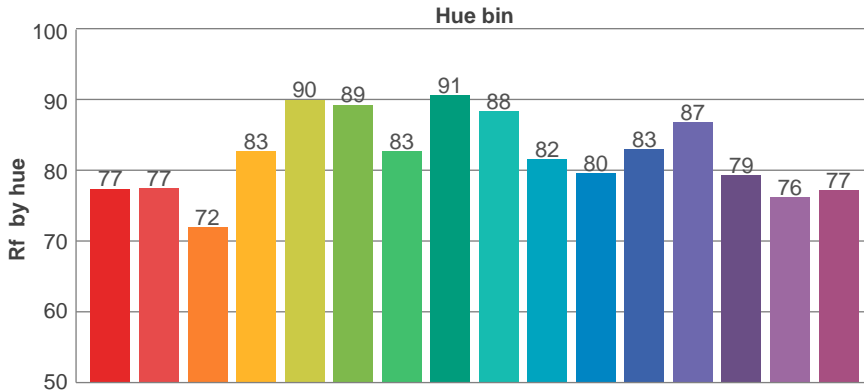
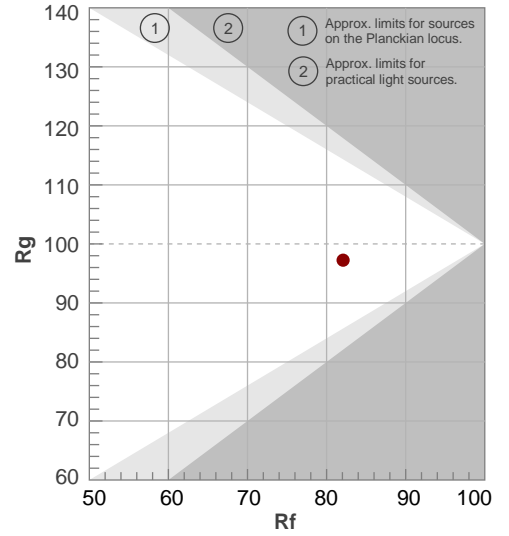
Beam angle 50%	Field angle 10%	Cutoff angle 2,5%	Intensity ratio in 120° cone	Intensity ratio in 90° cone
26,1°	69,3°	86°	98,8%	96,1%

TM30 details

Rf 82,1
Fidelity index Rf

Rg 97,2
Gammut index Rg

Hue Bin	R _f	Graphic shifts (%)	
		Chroma	Hue
1	77	-11%	-1%
2	77	-9%	8%
3	72	-3%	13%
4	83	4%	9%
5	90	5%	5%
6	89	5%	-3%
7	83	-1%	-10%
8	91	-3%	-4%
9	88	-7%	1%
10	82	-6%	7%
11	80	-2%	13%
12	83	6%	5%
13	87	6%	-5%
14	79	6%	-14%
15	76	-1%	-14%
16	77	-8%	-14%



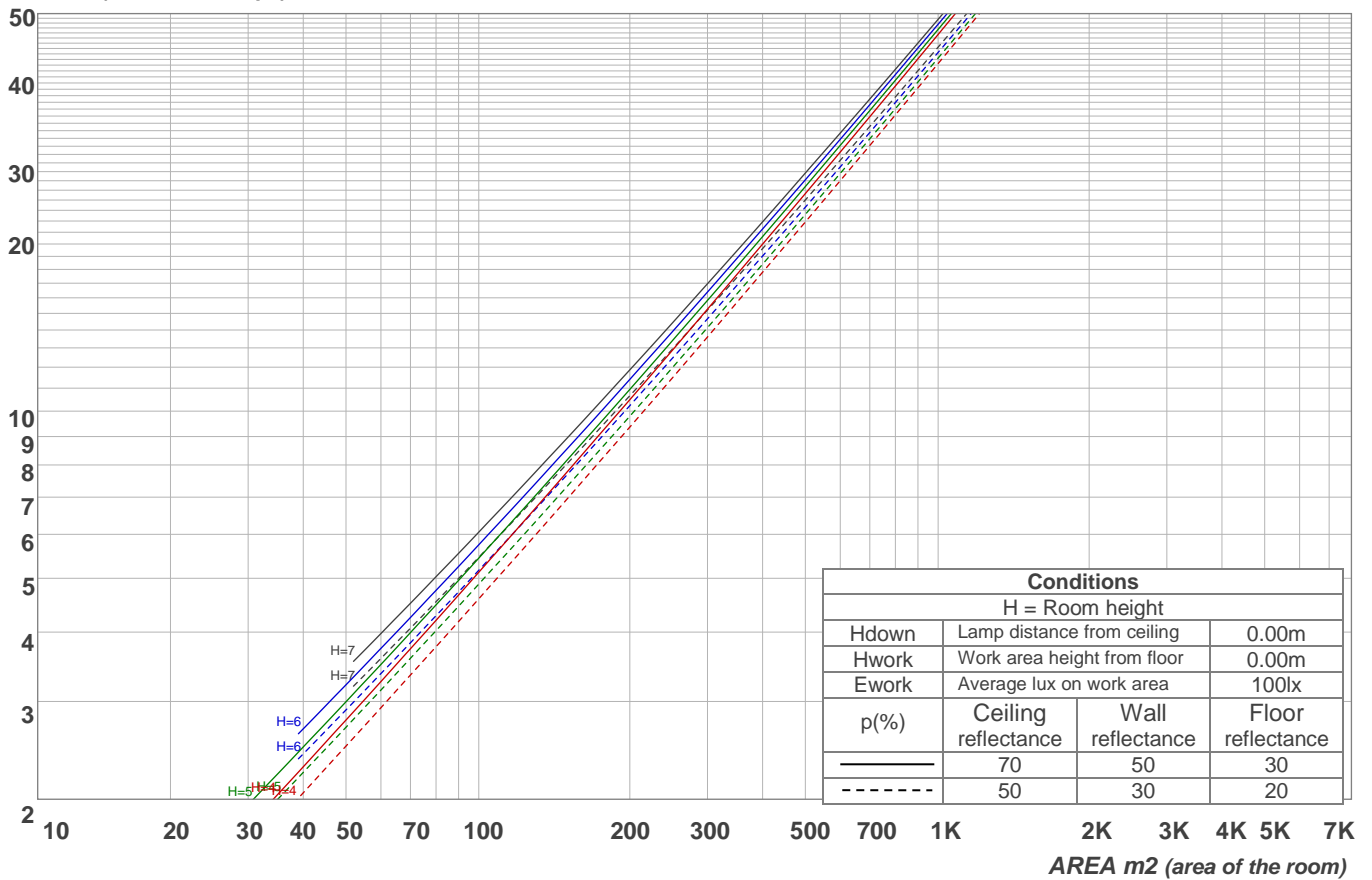
Light planning

Coefficients of Utilization

Ceiling reflectance	80				70				50			30			10			0
Wall reflectance	70	50	30	10	70	50	30	10	50	30	10	50	30	10	50	30	10	0
Floor reflectance	20	20	20	20	20	20	20	20	20	20	20	20	20	20	20	20	20	0
RCR	(RCR: Room Cavity Ratio)																	
	Room Values are expressed as percentage of Lumens delivered to the task surface																	
0	119	119	119	119	116	116	116	116	111	111	111	106	106	106	102	102	102	100
1	114	111	109	107	111	109	107	105	105	103	102	101	100	99	98	97	96	94
2	109	104	101	97	107	103	99	96	99	97	94	96	94	92	94	92	90	89
3	104	98	94	90	102	97	93	89	94	91	88	92	89	86	90	87	85	84
4	99	93	88	84	98	91	87	83	89	85	82	87	84	81	86	83	80	79
5	95	88	82	78	94	87	82	78	85	81	77	83	80	77	82	79	76	75
6	91	83	78	74	90	82	77	74	81	76	73	80	76	73	78	75	72	71
7	87	79	74	70	86	78	73	70	77	73	69	76	72	69	75	71	69	67
8	84	75	70	66	83	75	70	66	74	69	66	73	69	66	72	68	65	64
9	81	72	67	63	80	72	67	63	71	66	63	70	66	63	69	65	63	61
10	78	69	64	60	77	69	64	60	68	63	60	67	63	60	66	63	60	59

LAMPS (number of lamps)

Luminaire budgetary diagram

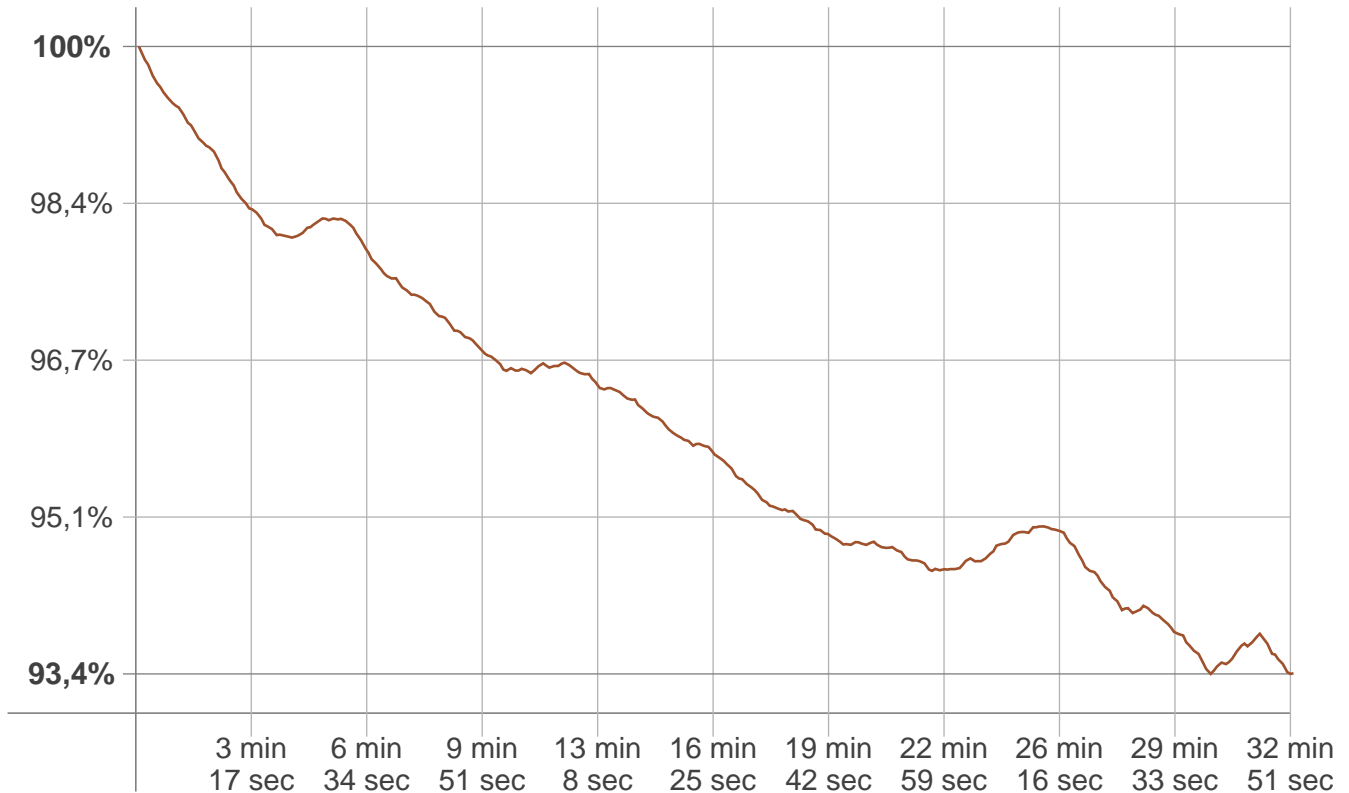


Zonal Lumen Summary

0°-10°	10°-20°	20°-30°	30°-40°	40°-50°	50°-60°	60°-70°	70°-80°	80°-90°
504 lm	768 lm	531 lm	378 lm	116 lm	31,3 lm	14,1 lm	8,19 lm	2,83 lm
90°-100°	100°-110°	110°-120°	120°-130°	130°-140°	140°-150°	150°-160°	160°-170°	170°-180°
0,453 lm	0,423 lm	0,415 lm	0,394 lm	0,376 lm	0,383 lm	0,342 lm	0,202 lm	0,048 lm

Stabilization

Warmup curve



Warmup result

Warmup time:	32 min 56 sec
Warmup variation	-6,7%

Warmup conditions

Stable period:	15 min
Stable change max:	2,0%
Minimum time:	15 min

Color temperature change

CCT start	CCT change	CCT end
3037 K	+8 K	3045 K

Output change

Output start	Output change	Output end
2491 lm	-134 lm	2356 lm