

Light efficiency:

140 Lumen/Watt

Light quality:

CRI: 80,0

Color temperature:

2992 K

Output: 920 lm

Peak: 1527 cd

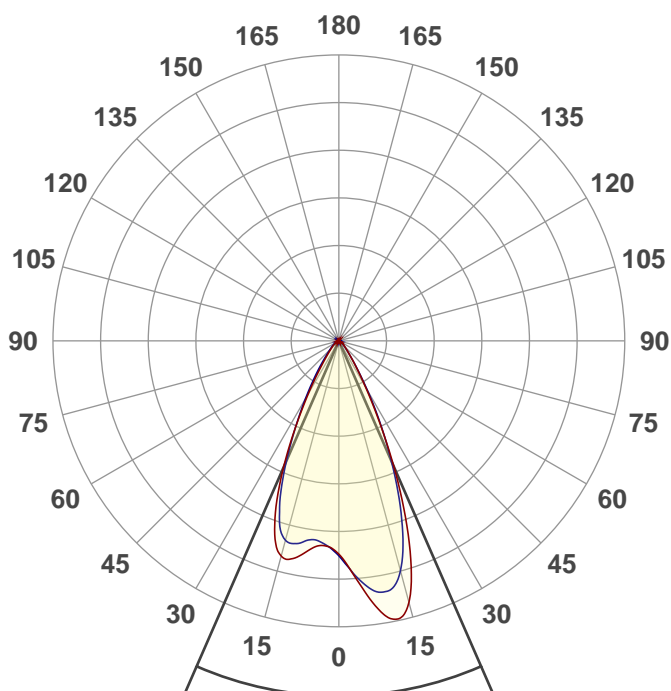
Power: 6,6 W

PF: 0,98



Product name:

E0207-8113A-1-BLED7W-GU10-3K-AM



Beam angle

47,2°



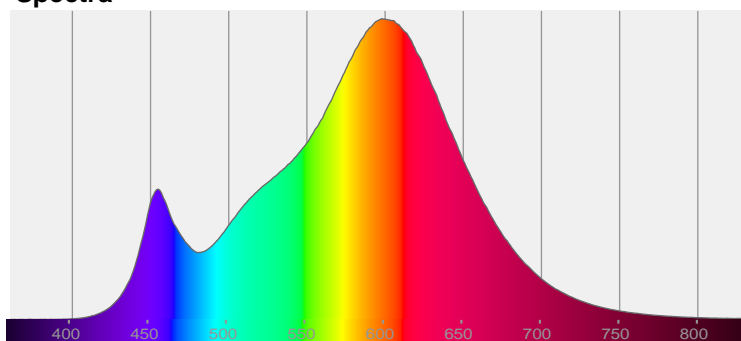
CIE 1931  
x: 0,439  
y: 0,408

THD Values:

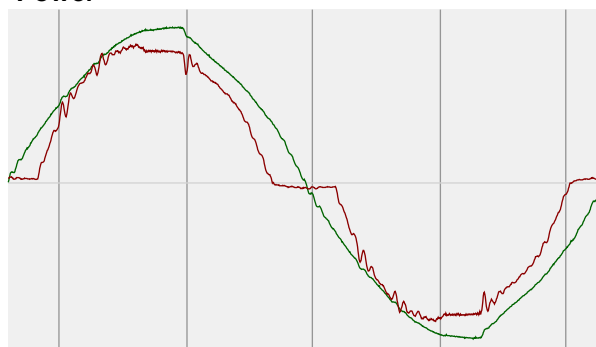
Voltage: 2,61%

Current: 17,39%

Spectra

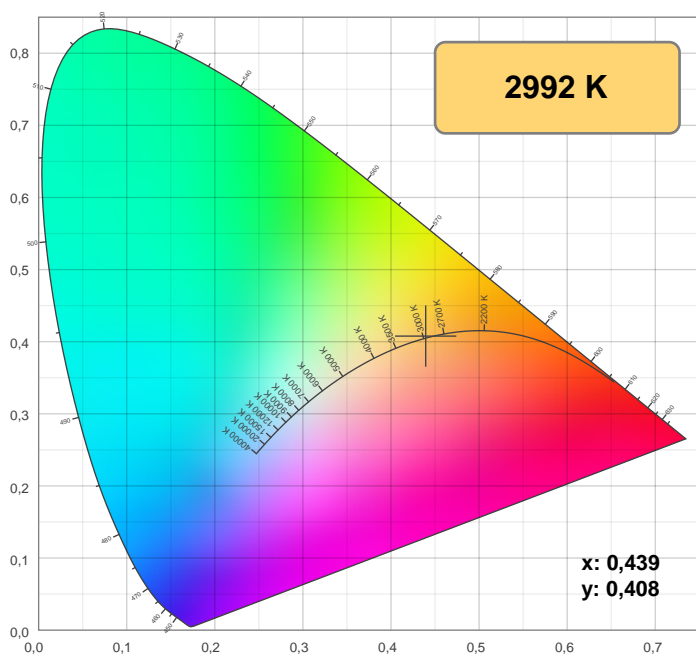


Power



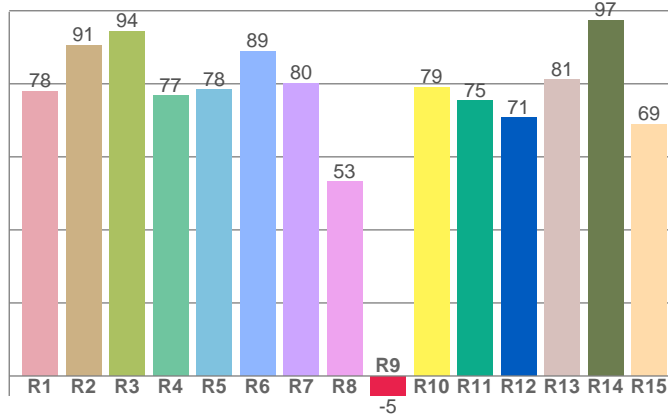
Voltage: 115 V  
Current: 0,058 A  
Frequency: 60 Hz

## Color details



CIE 1931

CRI: 80,0 (R1-R8)

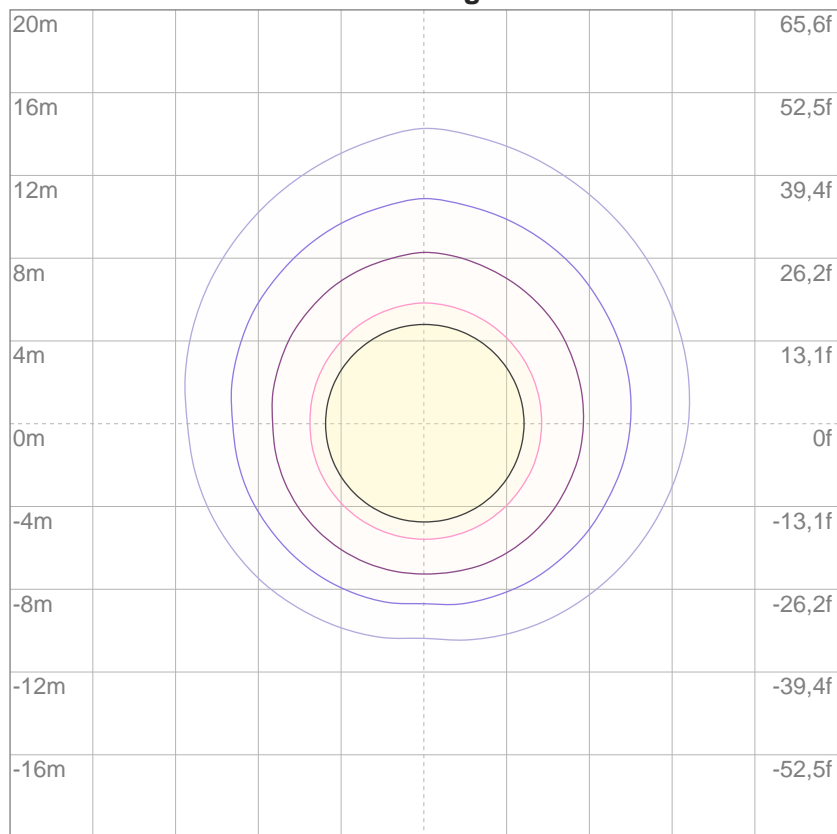


CRI R values, only R1-R8 are used to calculate final CRI value

R1	R2	R3	R4	R5	R6	R7	R8	9	R10	R11	R12	R13	R14	R15
78,0	90,6	94,4	76,7	78,3	88,9	80,1	53,1	-5,5	79,1	75,3	70,7	81,1	97,4	68,9

## ISO Diagrams

ISO lux diagram



3%	0,345 lx
5%	0,576 lx
10%	1,15 lx
30%	3,45 lx
50%	5,76 lx

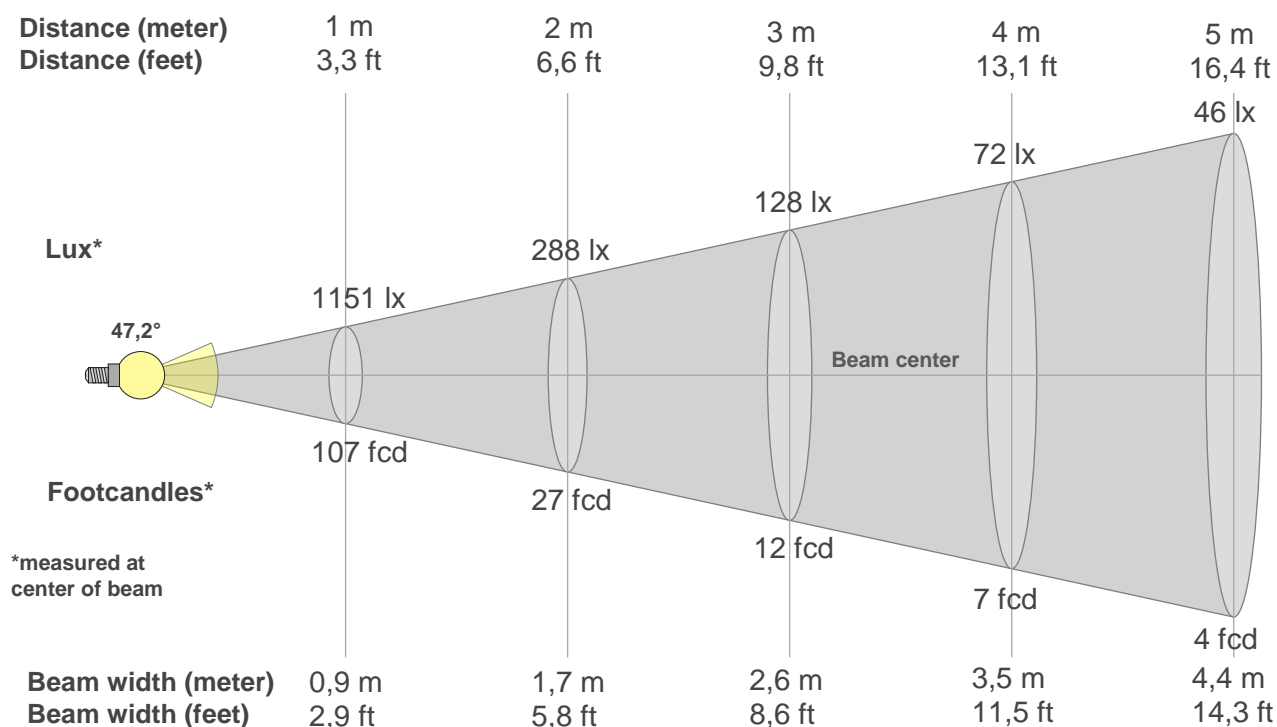
### Conditions:

Number of c-planes: 4

Lux at center: 11,5 lx

*Lux distribution on a surface when lamp is mounted at 10 meters from the surface.*

## Beam details



### Beam intensities from 1-20m

1m	2m	3m	4m	5m	6m	7m	8m	9m	10m	11m	12m	13m	14m	15m	16m	17m	18m	19m	20m
3,3ft	6,6ft	9,8ft	13,1ft	16,4ft	19,7ft	23ft	26,2ft	29,5ft	32,8ft	36,1ft	39,4ft	42,7ft	45,9ft	49,2ft	52,5ft	55,8ft	59,1ft	62,3ft	65,6ft
1151lx	288lx	128lx	72lx	46lx	32lx	23lx	18lx	14lx	12lx	10lx	8lx	7lx	6lx	5lx	4lx	4lx	4lx	3lx	3lx
106,9fc	26,7fcd	11,9fcd	6,7fcd	4,3fcd	3fcd	2,2fcd	1,7fcd	1,3fcd	1,1fcd	0,9fcd	0,7fcd	0,6fcd	0,5fcd	0,5fcd	0,4fcd	0,4fcd	0,3fcd	0,3fcd	0,3fcd

### Intensities in 0° c-plane

0°	2°	4°	6°	8°	10°	12°	14°	16°	18°	20°	22°	24°	26°	28°	30°	32°	34°	36°	38°
1151	1201	1275	1359	1442	1506	1526	1493	1399	1253	1077	889	702	531	393	288	210	157	119	92
100%	104%	111%	118%	125%	131%	133%	130%	122%	109%	94%	77%	61%	46%	34%	25%	18%	14%	10%	8%

### Intensities in 90° c-plane

0°	2°	4°	6°	8°	10°	12°	14°	16°	18°	20°	22°	24°	26°	28°	30°	32°	34°	36°	38°
1151	1207	1264	1315	1355	1370	1362	1316	1231	1114	974	825	676	537	414	305	220	160	116	86
100%	105%	110%	114%	118%	119%	118%	114%	107%	97%	85%	72%	59%	47%	36%	27%	19%	14%	10%	7%

### Intensities in 180° c-plane

0°	2°	4°	6°	8°	10°	12°	14°	16°	18°	20°	22°	24°	26°	28°	30°	32°	34°	36°	38°
1151	1115	1104	1109	1134	1168	1196	1205	1179	1110	1000	863	713	565	433	330	247	184	141	111
100%	97%	96%	96%	99%	101%	104%	105%	102%	96%	87%	75%	62%	49%	38%	29%	21%	16%	12%	10%

### Intensities in 270° c-plane

0°	2°	4°	6°	8°	10°	12°	14°	16°	18°	20°	22°	24°	26°	28°	30°	32°	34°	36°	38°
1151	1119	1095	1080	1079	1096	1113	1117	1092	1030	929	806	677	554	447	358	284	224	176	139
100%	97%	95%	94%	94%	95%	97%	97%	95%	90%	81%	70%	59%	48%	39%	31%	25%	19%	15%	12%

Beam angle 50%	Field angle 10%	Cutoff angle 2,5%	Intensity ratio in 120° cone	Intensity ratio in 90° cone
47,2°	71,3°	99,9°	98,9%	94,7%

## TM30 details

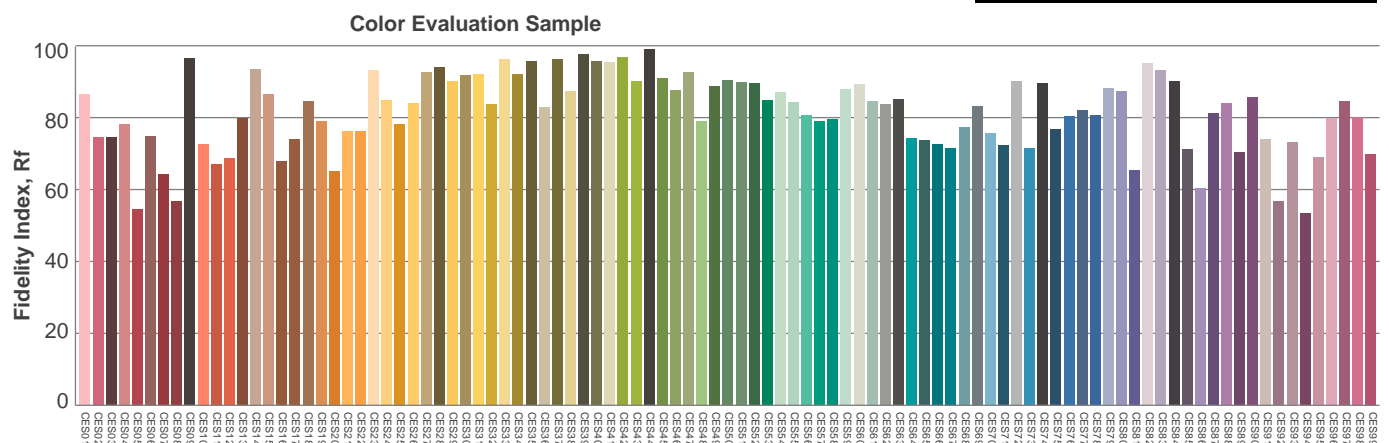
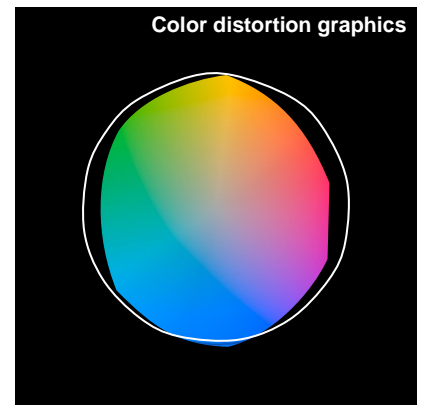
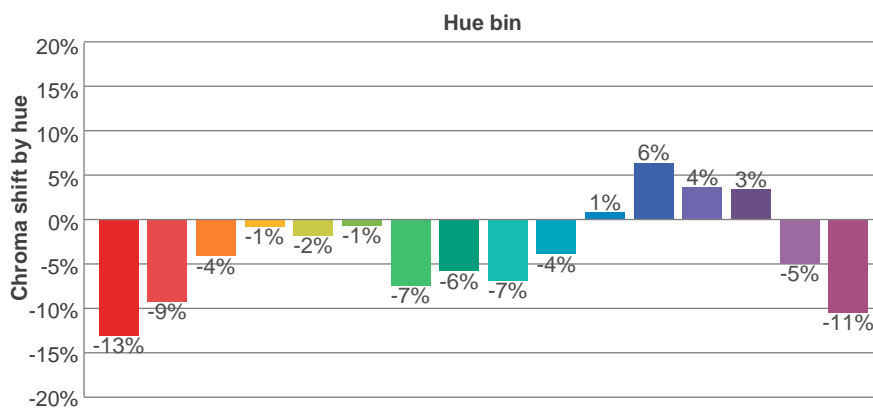
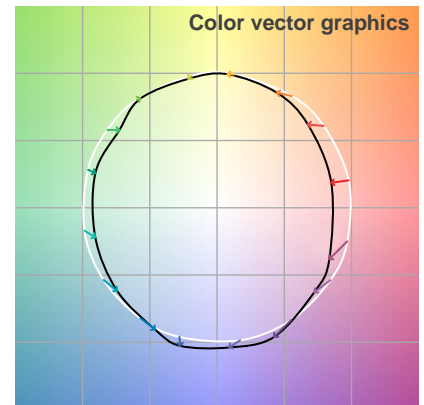
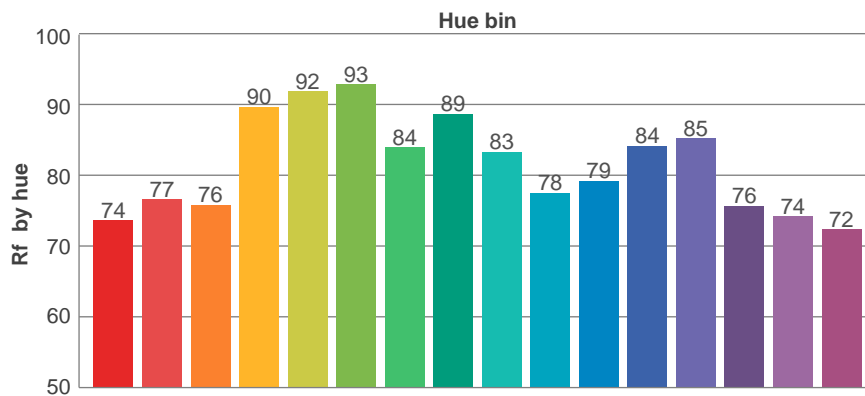
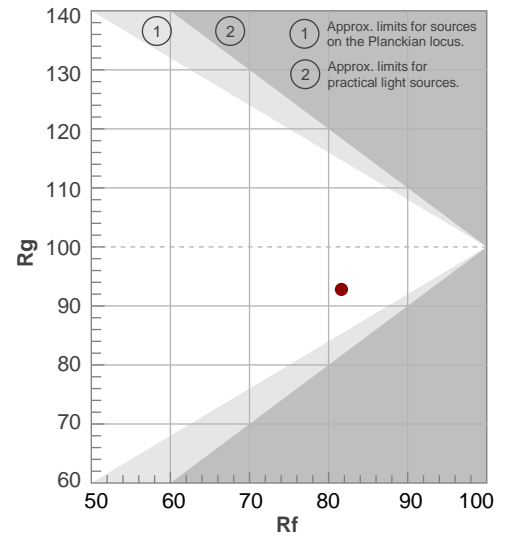
**Rf 81,6**

Fidelity index Rf

**Rg 92,8**

Gammut index Rg

Hue Bin	R <sub>f</sub>	Graphic shifts (%)	
		Chroma	Hue
1	74	-13%	1%
2	77	-9%	7%
3	76	-4%	11%
4	90	-1%	5%
5	92	-2%	3%
6	93	-1%	-3%
7	84	-7%	-5%
8	89	-6%	1%
9	83	-7%	6%
10	78	-4%	12%
11	79	1%	14%
12	84	6%	2%
13	85	4%	-9%
14	76	3%	-18%
15	74	-5%	-14%
16	72	-11%	-16%



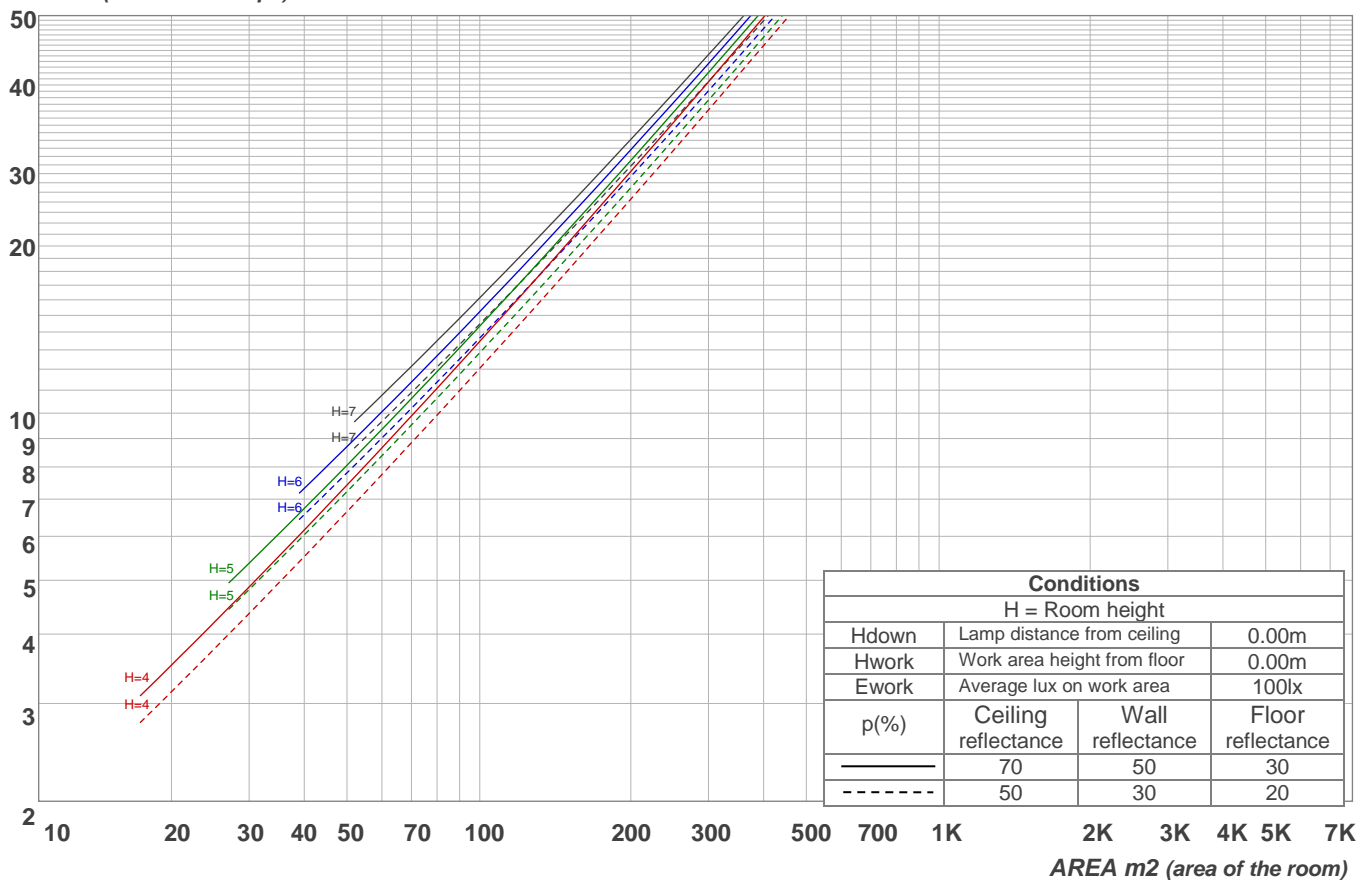
# Light planning

## Coefficients of Utilization

Ceiling reflectance	80				70				50			30			10			0
Wall reflectance	70	50	30	10	70	50	30	10	50	30	10	50	30	10	50	30	10	0
Floor reflectance	20	20	20	20	20	20	20	20	20	20	20	20	20	20	20	20	20	0
RCR	(RCR: Room Cavity Ratio) Room Values are expressed as percentage of Lumens delivered to the task surface																	
0	119	119	119	119	116	116	116	116	111	111	111	106	106	106	102	102	102	100
1	114	111	109	107	111	109	107	105	105	103	102	101	100	99	98	97	96	94
2	108	104	100	97	106	102	99	96	99	96	94	96	94	92	93	91	90	88
3	103	97	93	89	101	96	92	88	93	90	87	91	88	85	89	86	84	83
4	99	91	86	82	97	90	86	82	88	84	81	86	83	80	84	81	79	78
5	94	86	81	77	93	85	80	76	84	79	76	82	78	75	80	77	74	73
6	90	82	76	72	88	81	75	72	79	75	71	78	74	71	77	73	70	69
7	86	77	72	68	85	77	71	67	75	71	67	74	70	67	73	69	66	65
8	82	73	68	64	81	73	67	64	72	67	63	71	66	63	70	66	63	62
9	79	70	64	60	78	69	64	60	68	63	60	67	63	60	67	63	60	58
10	75	66	61	57	74	66	61	57	65	60	57	64	60	57	64	60	57	56

LAMPS (number of lamps)

## Luminaire budgetary diagram

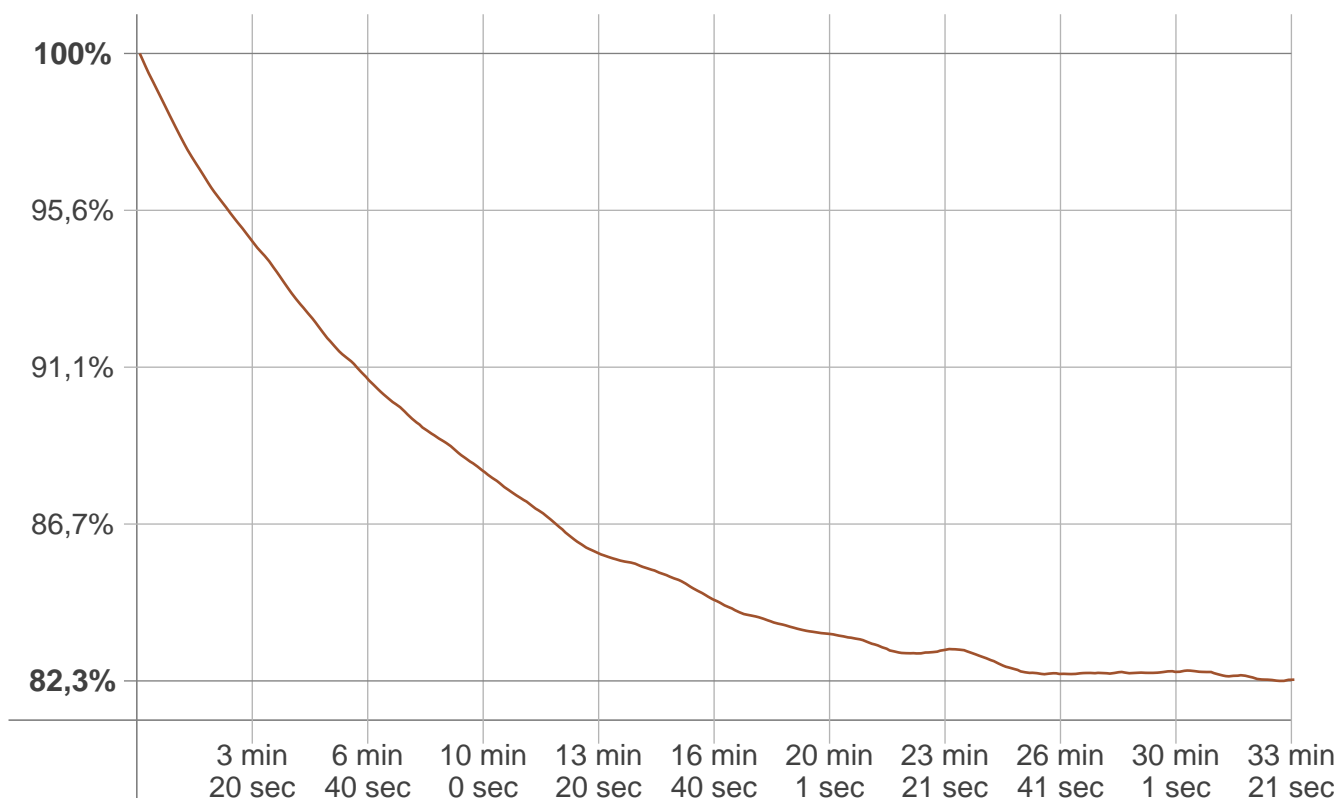


## Zonal Lumen Summary

0°-10°	10°-20°	20°-30°	30°-40°	40°-50°	50°-60°	60°-70°	70°-80°	80°-90°
117 lm	341 lm	282 lm	106 lm	42,6 lm	21,2 lm	7,56 lm	1,49 lm	0,310 lm
90°-100°	100°-110°	110°-120°	120°-130°	130°-140°	140°-150°	150°-160°	160°-170°	170°-180°
0,028 lm	0,021 lm	0,023 lm	0,030 lm	0,047 lm	0,077 lm	0,096 lm	0,065 lm	0,009 lm

## Stabilization

Warmup curve



Warmup result

Warmup time:	33 min 26 sec
Warmup variation	-17,9%

Warmup conditions

Stable period:	15 min
Stable change max:	2,0%
Minimum time:	15 min

Color temperature change

CCT start	CCT change	CCT end
2942 K	+50 K	2992 K

Output change

Output start	Output change	Output end
1109 lm	-189 lm	920 lm