

Light efficiency:

143 Lumen/Watt

Light quality:

CRI: 80,1

Color temperature:

2997 K

Output: 1862 lm

Peak: 1562 cd

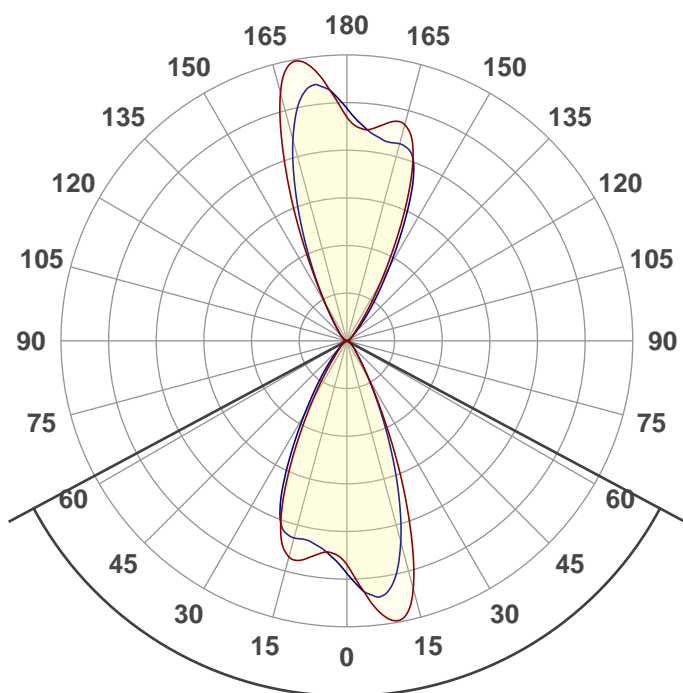
Power: 13,1 W

PF: 0,98



Product name:

E0210-8112A-1-BLED7W-GU10-3K-AM



Beam angle

123,7°



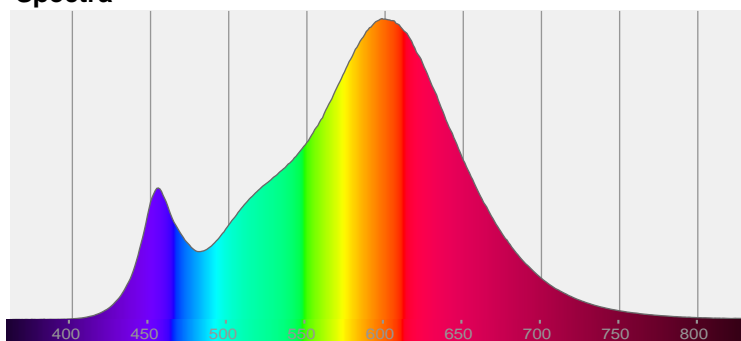
CIE 1931
x: 0,439
y: 0,407

THD Values:

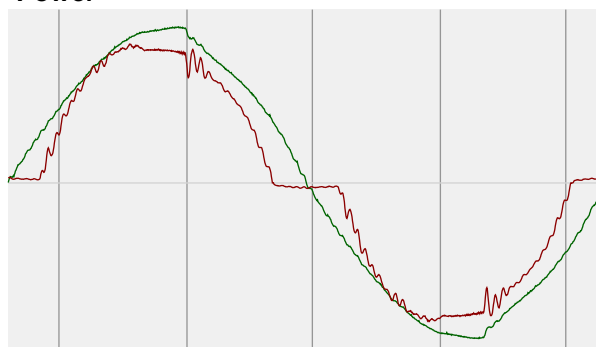
Voltage: 2,56%

Current: 18,27%

Spectra

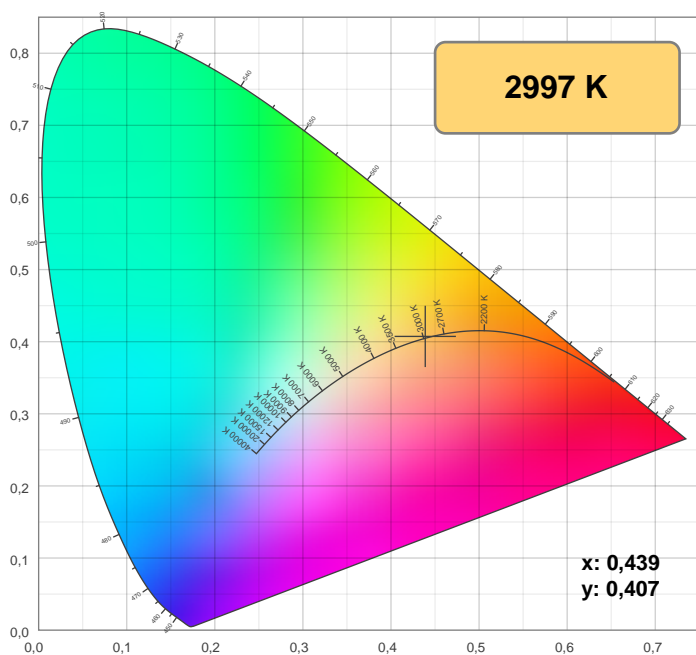


Power



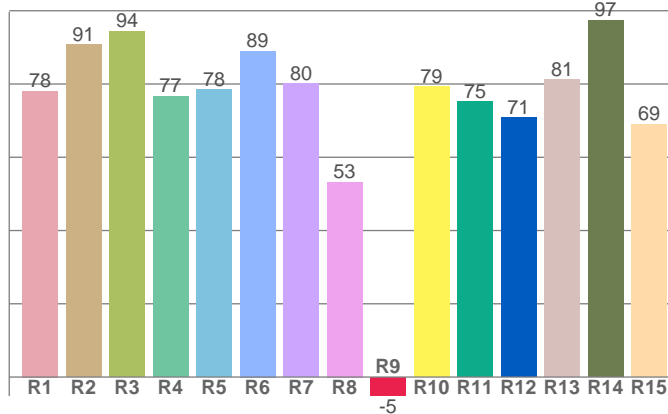
Voltage: 113 V
Current: 0,118 A
Frequency: 59,9 Hz

Color details



CIE 1931

CRI: 80,1 (R1-R8)

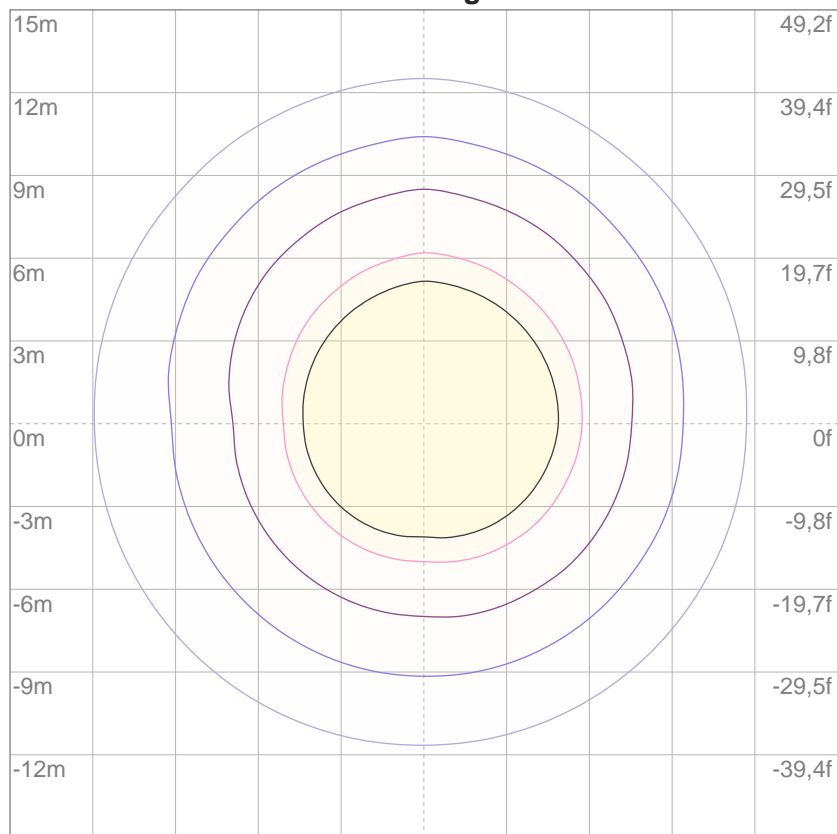


CRI R values, only R1-R8 are used to calculate final CRI value

R1	R2	R3	R4	R5	R6	R7	R8	9	R10	R11	R12	R13	R14	R15
78,1	90,7	94,4	76,7	78,4	89,0	80,1	53,3	-5,2	79,2	75,2	70,7	81,2	97,4	69,0

ISO Diagrams

ISO lux diagram



3%	0,376 lx
5%	0,627 lx
10%	1,25 lx
30%	3,76 lx
50%	6,27 lx

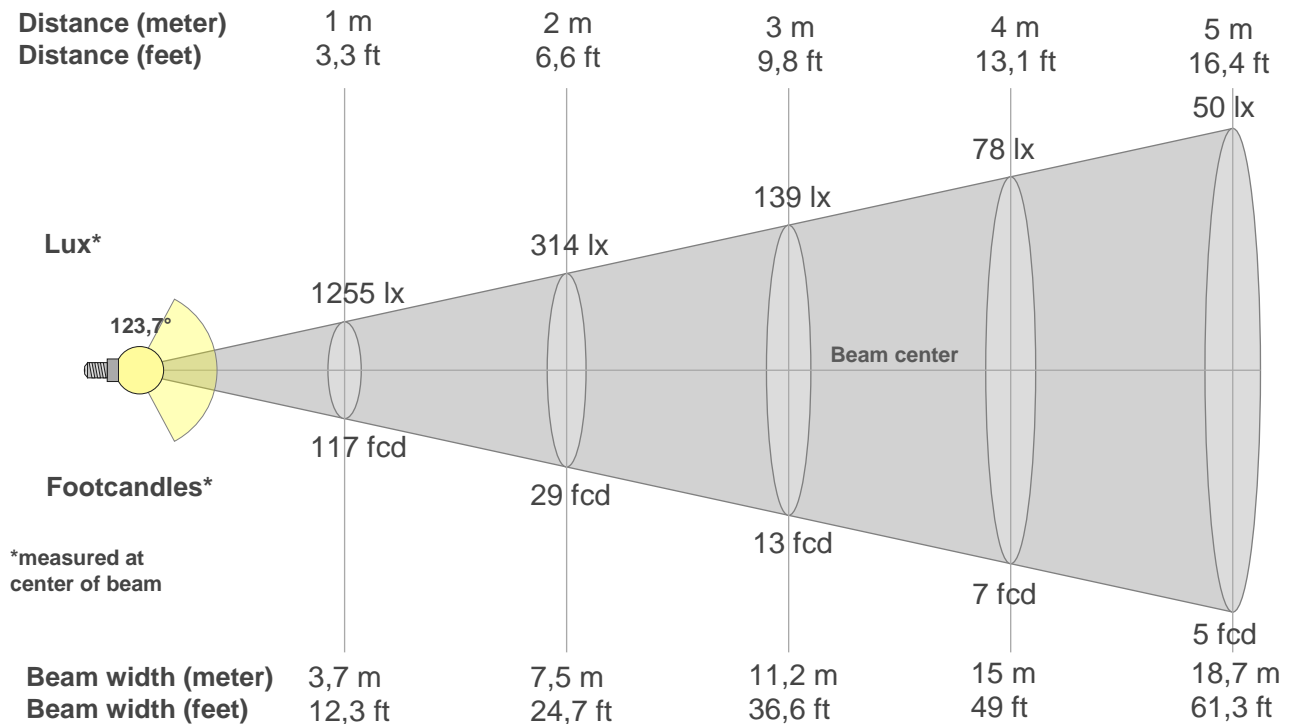
Conditions:

Number of c-planes: 4

Lux at center: 12,5 lx

Lux distribution on a surface when lamp is mounted at 10 meters from the surface.

Beam details



Beam intensities from 1-20m

1m	2m	3m	4m	5m	6m	7m	8m	9m	10m	11m	12m	13m	14m	15m	16m	17m	18m	19m	20m
3,3ft	6,6ft	9,8ft	13,1ft	16,4ft	19,7ft	23ft	26,2ft	29,5ft	32,8ft	36,1ft	39,4ft	42,7ft	45,9ft	49,2ft	52,5ft	55,8ft	59,1ft	62,3ft	65,6ft
1255lx	314lx	139lx	78lx	50lx	35lx	26lx	20lx	15lx	13lx	10lx	9lx	7lx	6lx	6lx	5lx	4lx	4lx	3lx	3lx
116,6fcd	29,1fcd	13fcd	7,3fcd	4,7fcd	3,2fcd	2,4fcd	1,8fcd	1,4fcd	1,2fcd	1fcd	0,8fcd	0,7fcd	0,6fcd	0,5fcd	0,5fcd	0,4fcd	0,4fcd	0,3fcd	0,3fcd

Intensities in 0° c-plane

0°	9°	18°	27°	36°	45°	54°	63°	72°	81°	90°	99°	108°	117°	126°	135°	144°	153°	162°	171°
1255	1553	1158	381	109	53	27	10	2	1	0	1	2	9	26	53	149	554	1159	1198
100%	124%	92%	30%	9%	4%	2%	1%	0%	0%	0%	0%	0%	1%	2%	4%	12%	44%	92%	96%

Intensities in 90° c-plane

0°	9°	18°	27°	36°	45°	54°	63°	72°	81°	90°	99°	108°	117°	126°	135°	144°	153°	162°	171°
1255	1402	939	356	113	53	25	9	2	1	0	1	4	13	30	71	226	650	1104	1132
100%	112%	75%	28%	9%	4%	2%	1%	0%	0%	0%	0%	0%	1%	2%	6%	18%	52%	88%	90%

Intensities in 180° c-plane

0°	9°	18°	27°	36°	45°	54°	63°	72°	81°	90°	99°	108°	117°	126°	135°	144°	153°	162°	171°
1255	1198	1159	554	149	53	26	9	2	1	0	1	2	10	27	53	109	381	1158	1553
100%	96%	92%	44%	12%	4%	2%	1%	0%	0%	0%	0%	0%	1%	2%	4%	9%	30%	92%	124%

Intensities in 270° c-plane

0°	9°	18°	27°	36°	45°	54°	63°	72°	81°	90°	99°	108°	117°	126°	135°	144°	153°	162°	171°
1255	1132	1104	650	226	71	30	13	4	1	0	1	2	9	25	53	113	356	939	1402
100%	90%	88%	52%	18%	6%	2%	1%	0%	0%	0%	0%	0%	1%	2%	4%	9%	28%	75%	112%

Beam angle 50%	Field angle 10%	Cutoff angle 2,5%	Intensity ratio in 120° cone	Intensity ratio in 90° cone
123,7°	360°	360°	49,4%	47,2%

TM30 details

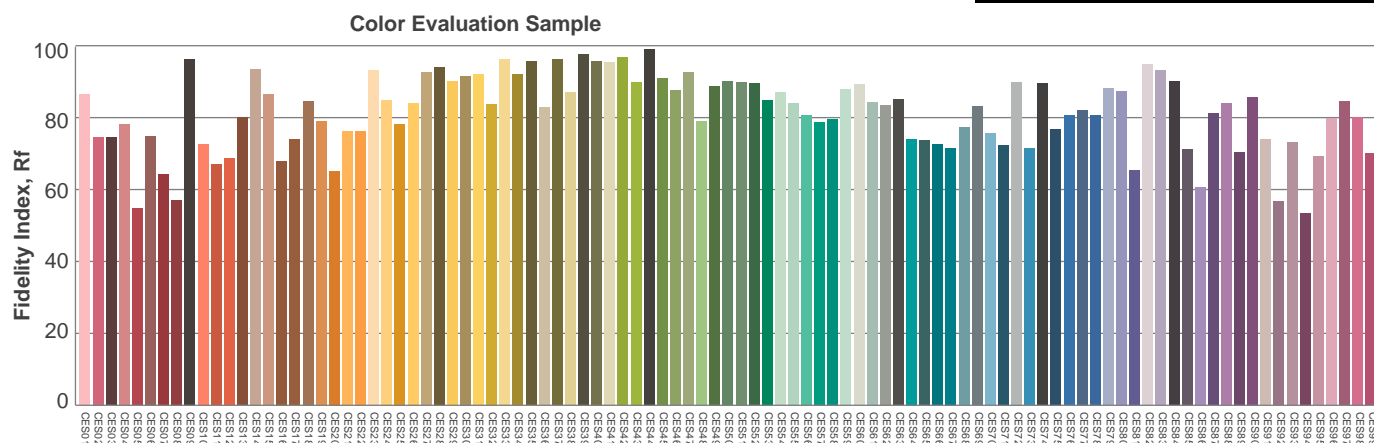
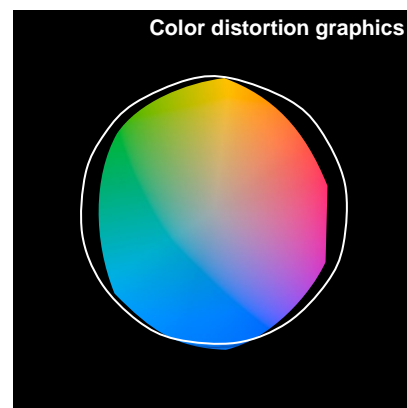
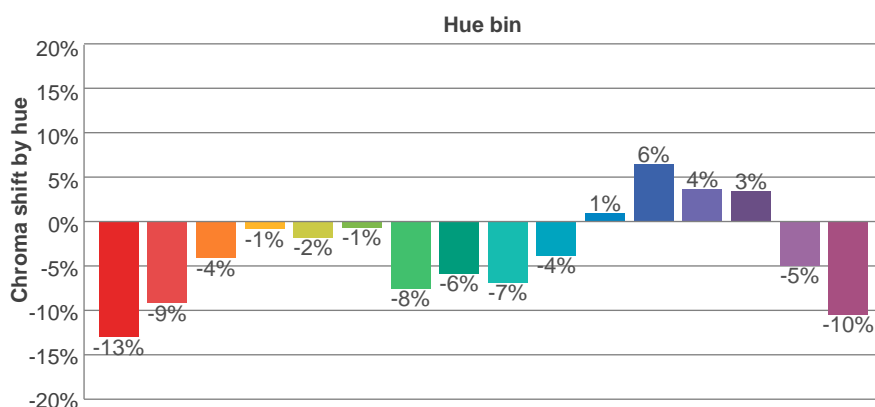
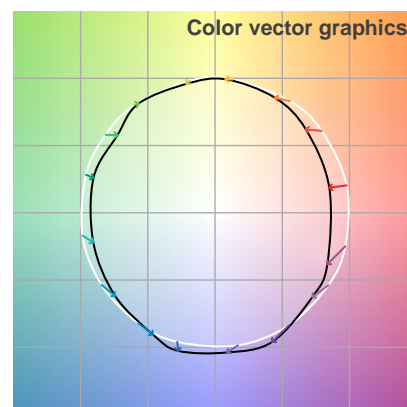
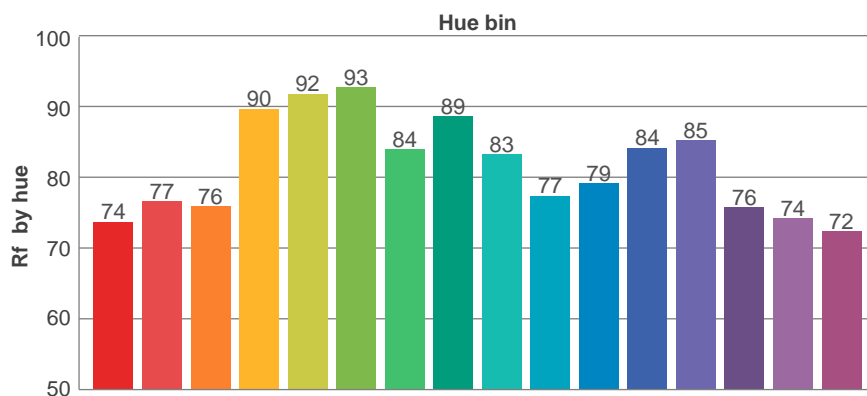
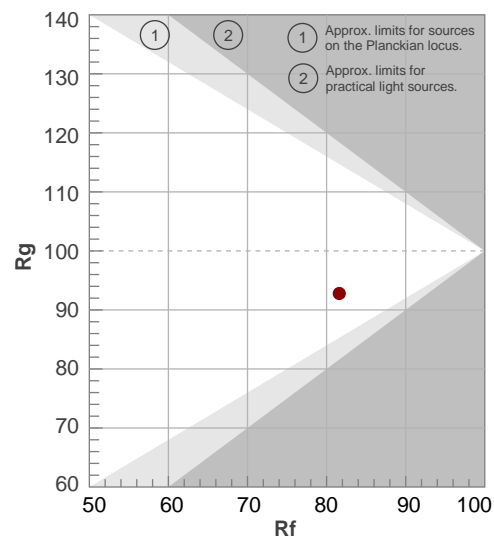
Rf 81,6

Fidelity index Rf

Rg 92,8

Gammut index Rg

Hue Bin	R _f	Graphic shifts (%)	
		Chroma	Hue
1	74	-13%	1%
2	77	-9%	7%
3	76	-4%	11%
4	90	-1%	5%
5	92	-2%	3%
6	93	-1%	-3%
7	84	-8%	-5%
8	89	-6%	1%
9	83	-7%	6%
10	77	-4%	12%
11	79	1%	14%
12	84	6%	2%
13	85	4%	-9%
14	76	3%	-18%
15	74	-5%	-14%
16	72	-10%	-16%



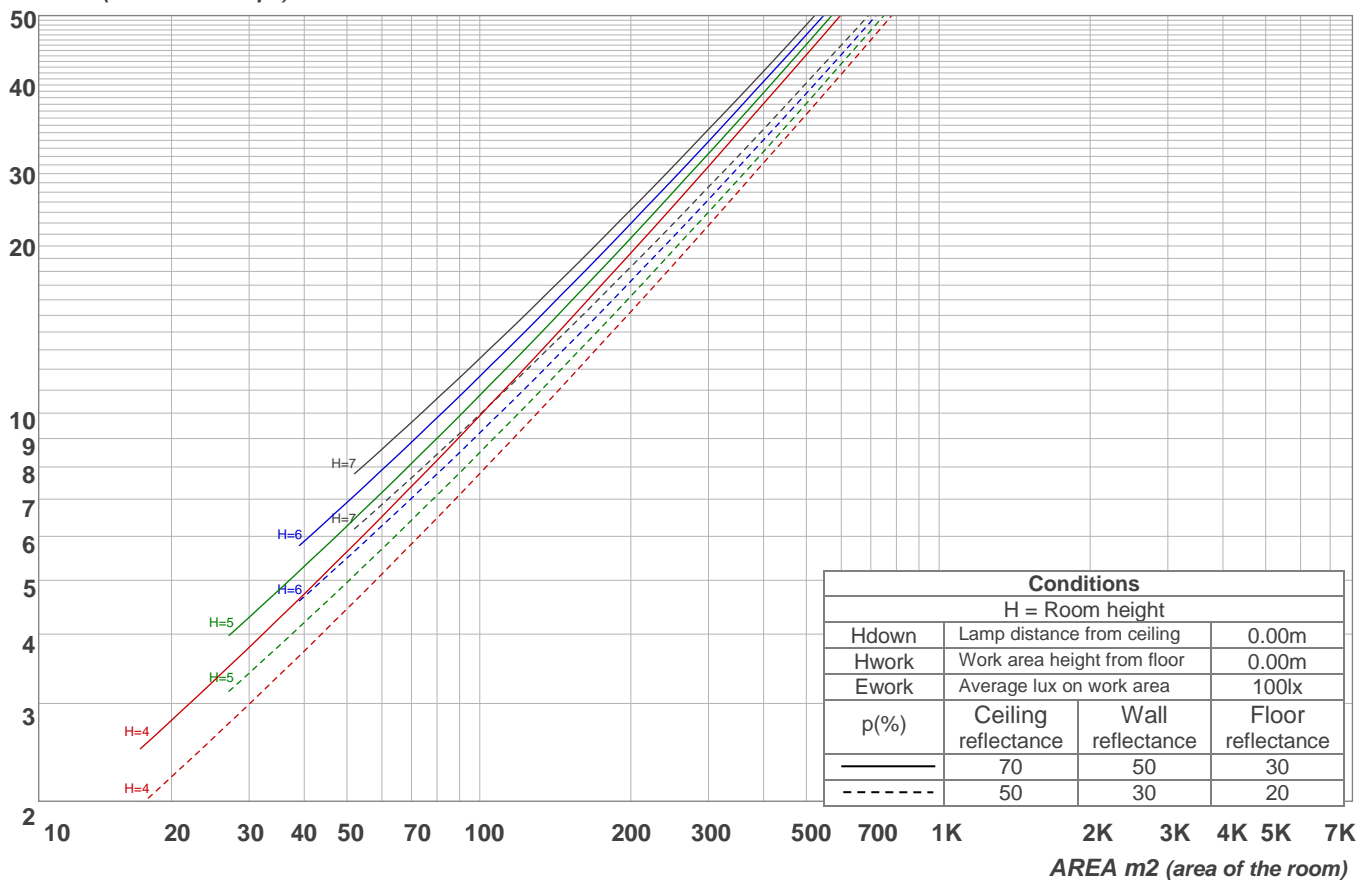
Light planning

Coefficients of Utilization

Ceiling reflectance	80				70				50			30			10			0
Wall reflectance	70	50	30	10	70	50	30	10	50	30	10	50	30	10	50	30	10	0
Floor reflectance	20	20	20	20	20	20	20	20	20	20	20	20	20	20	20	20	20	0
RCR	(RCR: Room Cavity Ratio) Room Values are expressed as percentage of Lumens delivered to the task surface																	
0	107	107	107	107	99	99	99	99	83	83	83	69	69	69	56	56	56	50
1	100	97	94	91	93	90	87	85	77	75	73	64	63	62	53	53	52	47
2	94	88	83	79	87	82	78	74	71	68	65	60	58	57	50	49	48	44
3	88	80	74	70	81	75	70	66	65	62	59	56	54	52	48	46	45	41
4	82	73	67	63	76	69	64	59	60	57	53	53	50	48	45	43	42	39
5	77	68	61	56	72	64	58	54	56	52	49	49	46	44	43	41	39	36
6	72	63	56	51	67	59	53	49	53	48	45	46	43	41	41	39	37	34
7	68	58	52	47	64	55	49	45	49	45	42	44	41	38	39	36	35	32
8	64	54	48	43	60	51	46	42	46	42	39	41	38	36	37	34	33	31
9	61	51	45	40	57	48	43	39	44	39	36	39	36	34	35	33	31	29
10	58	48	42	38	54	45	40	36	41	37	34	37	34	32	33	31	29	28

LAMPS (number of lamps)

Luminaire budgetary diagram

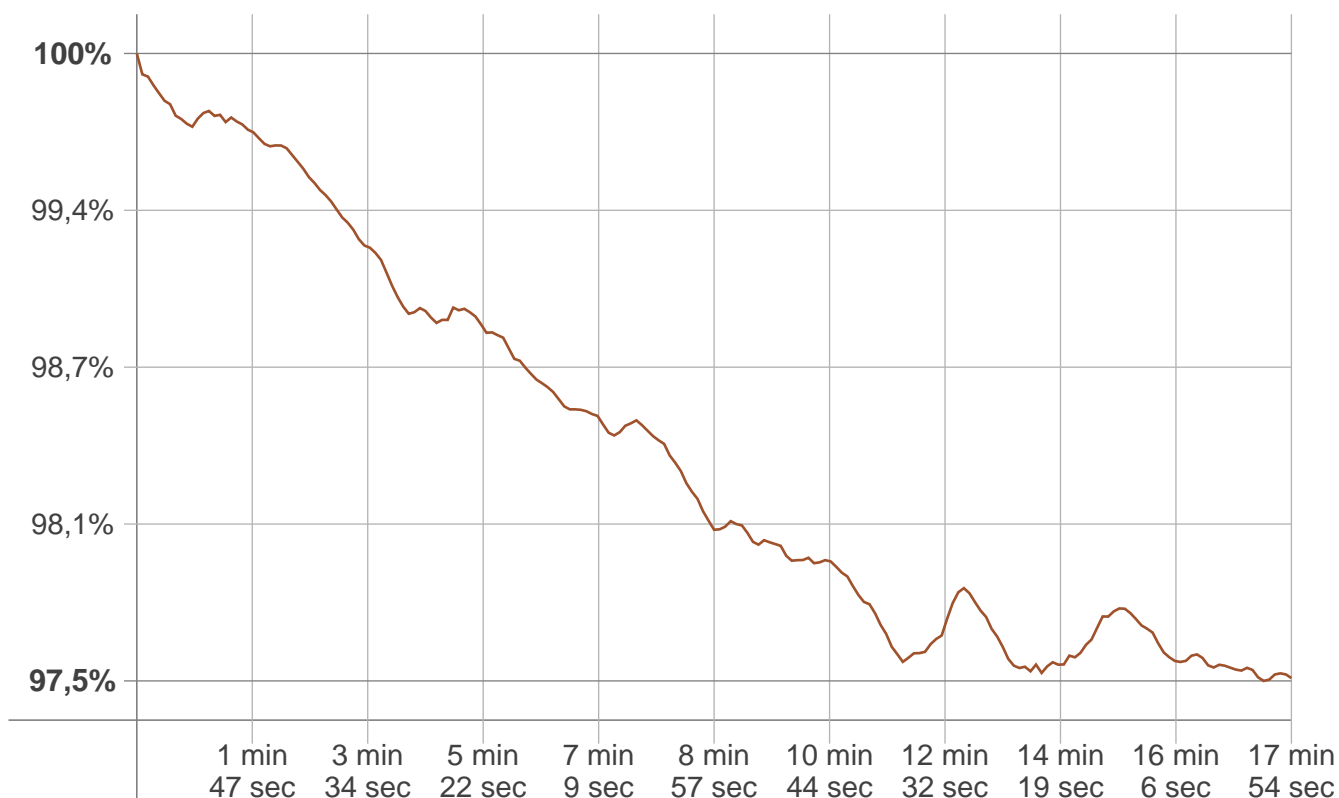


Zonal Lumen Summary

0°-10°	10°-20°	20°-30°	30°-40°	40°-50°	50°-60°	60°-70°	70°-80°	80°-90°
125 lm	334 lm	281 lm	112 lm	45,9 lm	22,4 lm	8,02 lm	1,79 lm	0,620 lm
90°-100°	100°-110°	110°-120°	120°-130°	130°-140°	140°-150°	150°-160°	160°-170°	170°-180°
0,620 lm	1,79 lm	8,02 lm	22,4 lm	45,9 lm	112 lm	281 lm	334 lm	125 lm

Stabilization

Warmup curve



Warmup result

Warmup time:	17 min 54 sec
Warmup variation	-2,5%

Warmup conditions

Stable period:	15 min
Stable change max:	2,0%
Minimum time:	15 min

Color temperature change

CCT start	CCT change	CCT end
2988 K	+9 K	2997 K

Output change

Output start	Output change	Output end
1901 lm	-39 lm	1862 lm