

Light efficiency:

107 Lumen/Watt

Light quality:

CRI: 84,0

Color temperature:

2934 K

Output: 3429 lm

Peak: 2271 cd

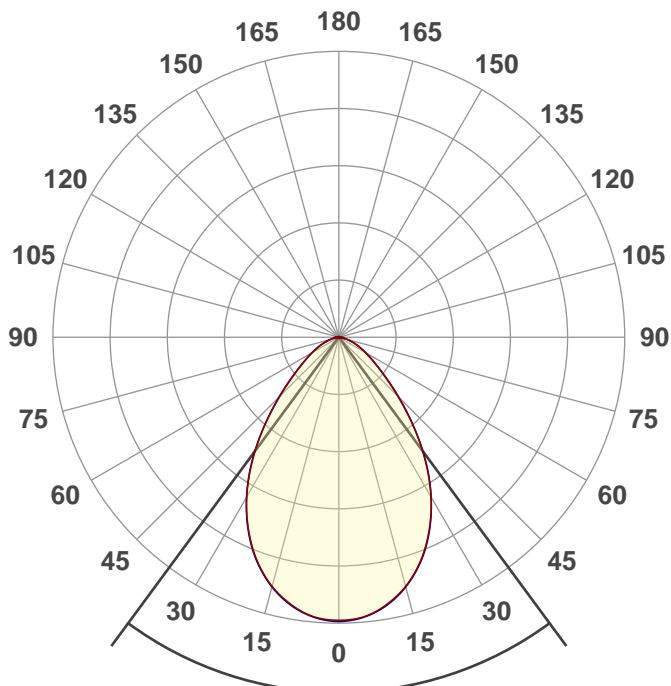
Power: 32,1 W

PF: 1,0



Product name:

E0787-KT6382-CCT-WH-34W-3K



Beam angle

72,8°

THD Values:

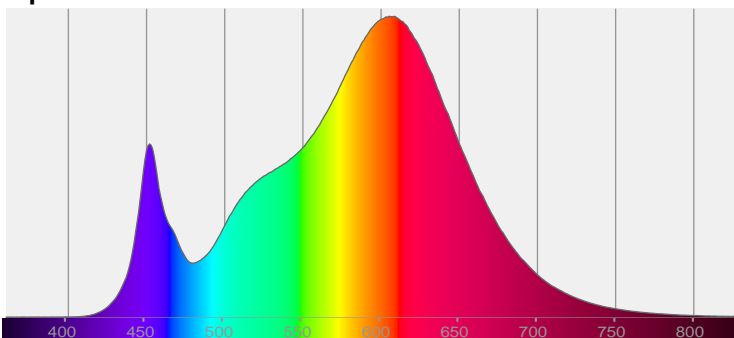
Voltage: 2,36%

Current: 5,29%

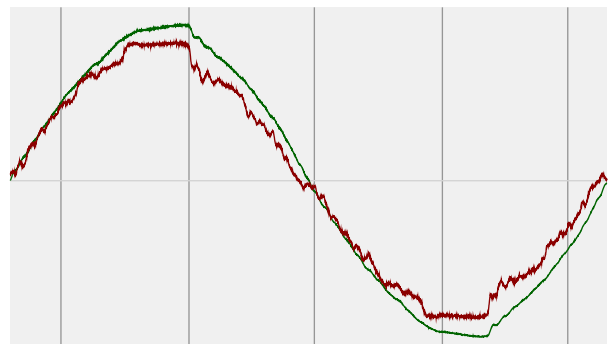


CIE 1931
x: 0,438
y: 0,398

Spectra



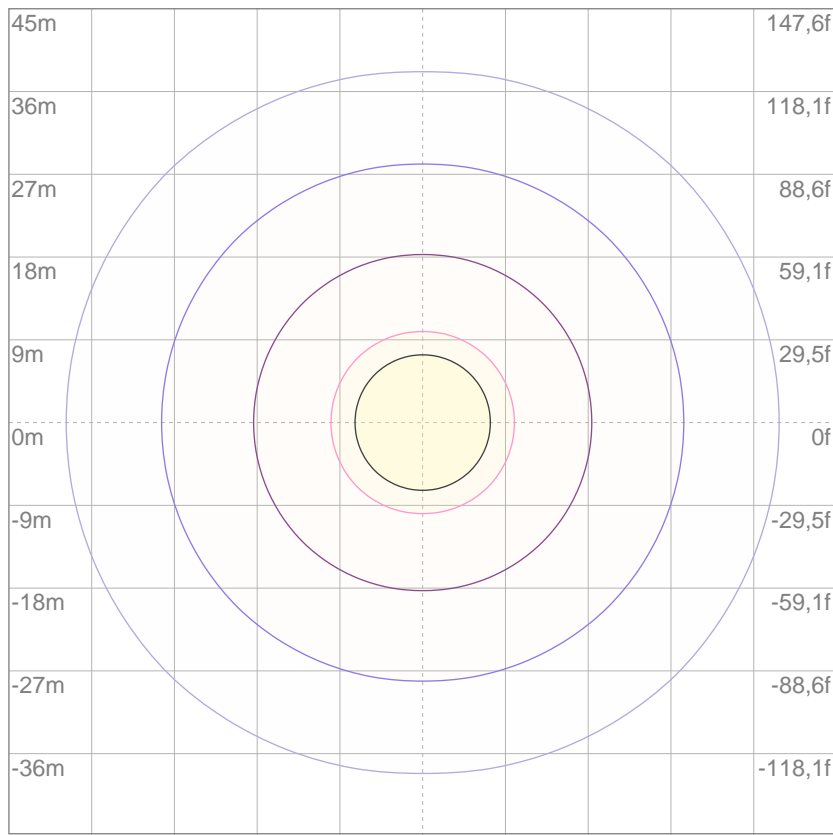
Power



Voltage: 111 V
Current: 0,290 A
Frequency: 60,1 Hz

ISO Diagrams

ISO lux diagram



Mounting height: 10 meters (33 f)

3%	0,679 lx
5%	1,13 lx
10%	2,26 lx
30%	6,79 lx
50%	11,3 lx

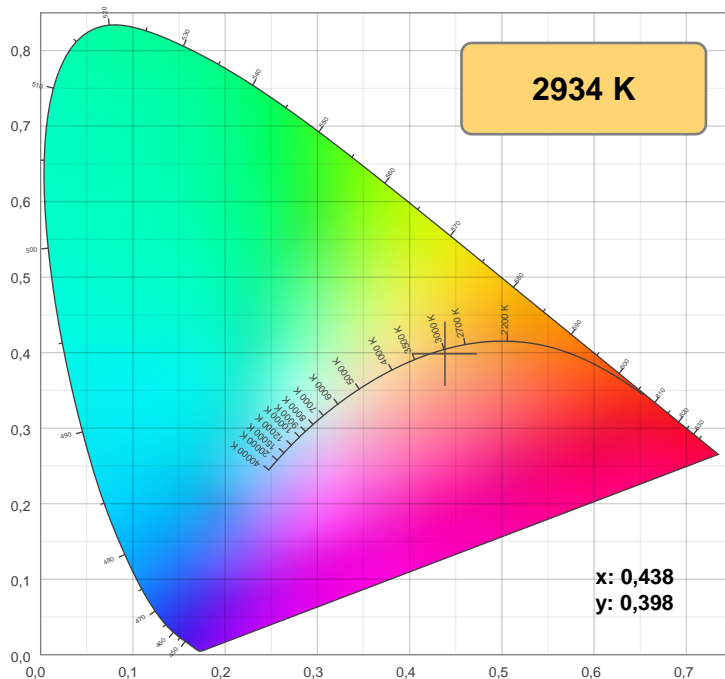
Conditions:

Number of c-planes: 8

Lux at center: 22,6 lx

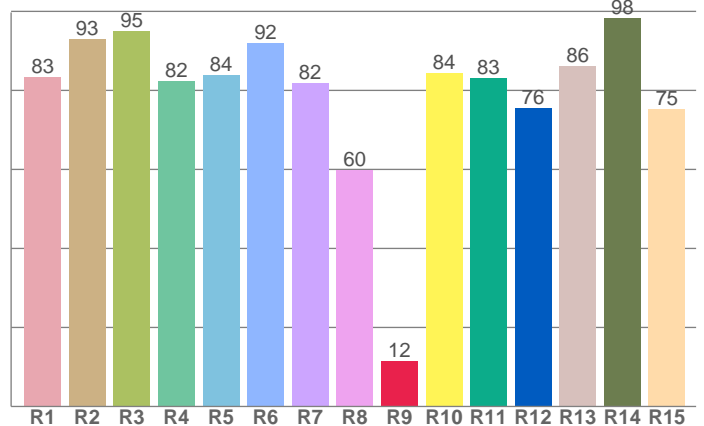
*Lux distribution on a surface
when lamp is mounted at 10
meters from the surface.*

Color details



CIE 1931

CRI: 84,0 (R1-R8)



CRI R values, only R1-R8 are used to calculate final CRI value

R1	R2	R3	R4	R5	R6	R7	R8	R9	R10	R11	R12	R13	R14	R15
83,4	93,1	95,1	82,5	83,9	92,1	81,8	59,8	11,5	84,4	83,0	75,6	86,1	98,2	75,3

Color parameters

Color temperature	Color rendering index	Red component	Color fidelity	Color gamut	Color quality scale	Color coordinate cie 1931	Color coordinate cie 1931	Color coordinate	Color coordinate	Color deviation from black body
CCT	CRI	CRI R9	TM30 Rf	TM30 Rg	CQS	x	y	u	v	Δuv
2934 K	84,0	11,5	85,3	96,9	82,5	0,438	0,398	0,254	0,346	-0,0024

TM-30 details

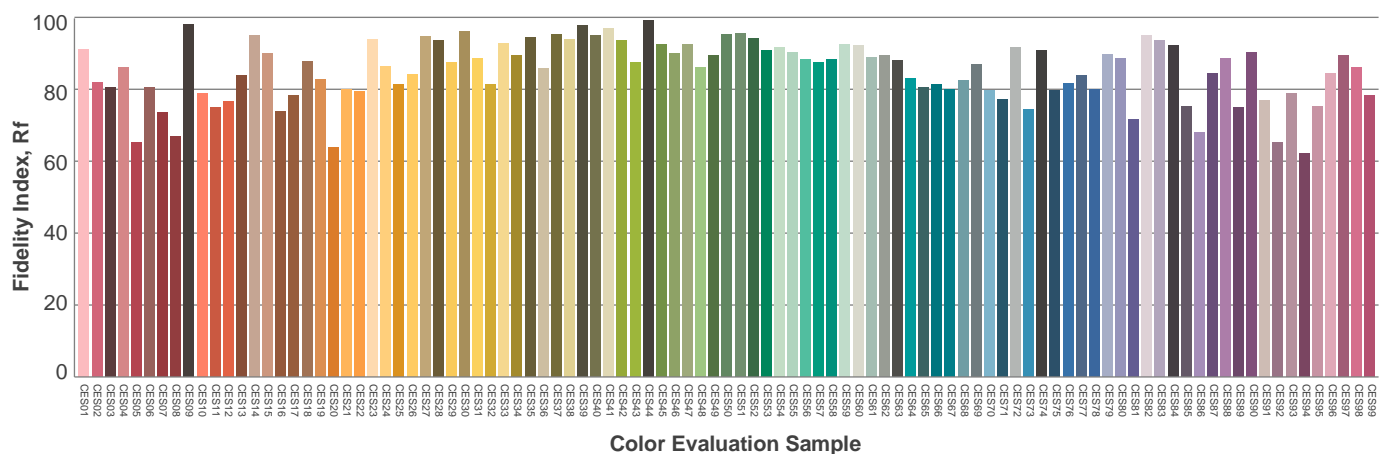
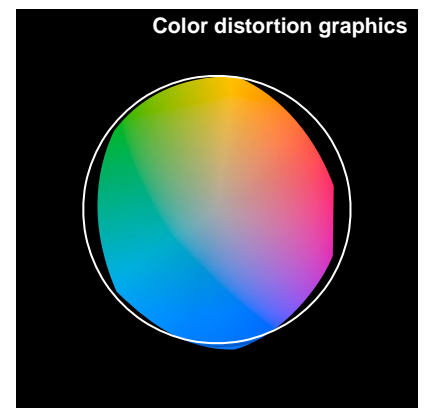
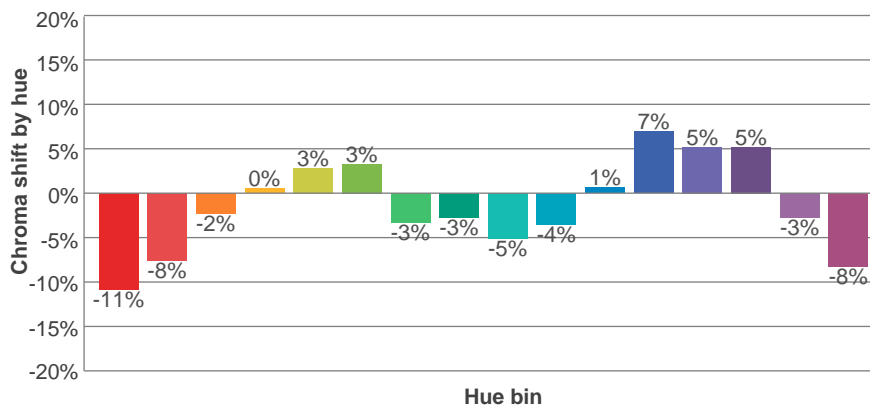
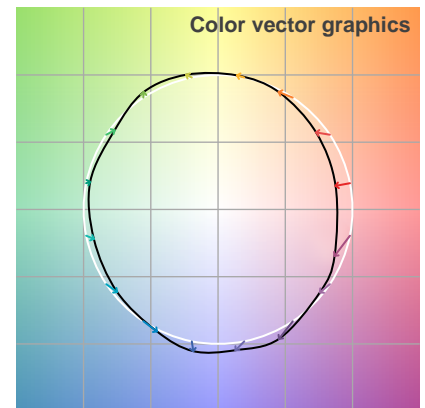
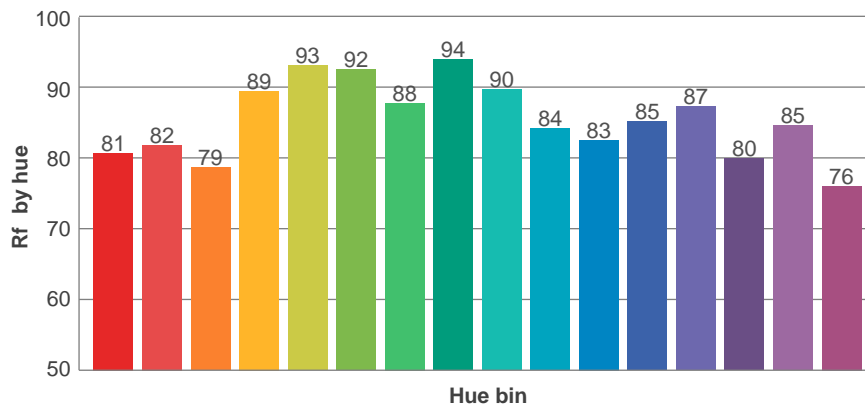
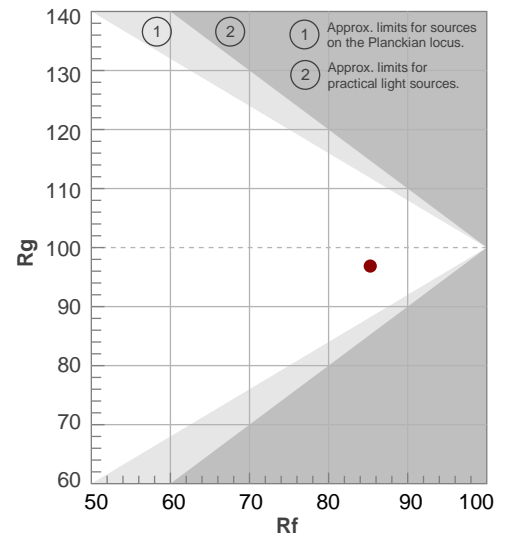
Rf 85,3

Fidelity index Rf

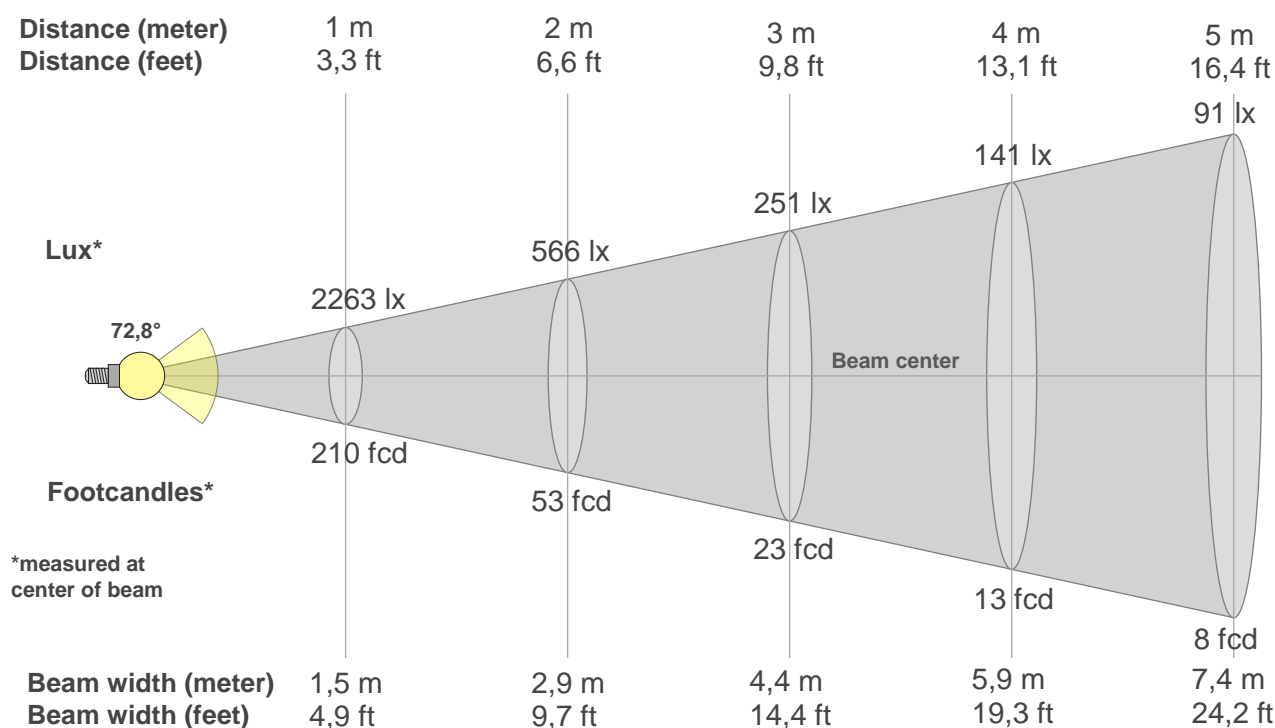
Rg 96,9

Gamut index Rg

Hue Bin	R _f	Shifts (%)	
		Chroma	Hue
1	81	-11%	0%
2	82	-8%	7%
3	79	-2%	11%
4	89	0%	6%
5	93	3%	4%
6	92	3%	-2%
7	88	-3%	-6%
8	94	-3%	-2%
9	90	-5%	3%
10	84	-4%	9%
11	83	1%	13%
12	85	7%	2%
13	87	5%	-8%
14	80	5%	-16%
15	85	-3%	-9%
16	76	-8%	-17%



Beam details



Beam intensities from 1-20m

{BEAM_INT_TABLE_START}

m	m	m	m	m	m	m	m	m	m	m	m	m	m	m	m	m	m	m	m
ft	ft	ft	ft	ft	ft	ft	ft	ft	ft	ft	ft	ft	ft	ft	ft	ft	ft	ft	ft
lx	lx	lx	lx	lx	lx	lx	lx	lx	lx	lx	lx	lx	lx	lx	lx	lx	lx	lx	lx
fcd	fcd	fcd	fcd	fcd	fcd	fcd	fcd	fcd	fcd	fcd	fcd	fcd	fcd	fcd	fcd	fcd	fcd	fcd	fcd

Intensities in 0° c-plane

0°	5°	10°	15°	20°	25°	30°	35°	40°	45°	50°	55°	60°	65°	70°	75°	80°	85°	90°	95°
2263	2243	2172	2061	1905	1706	1473	1205	930	677	479	343	249	178	120	73	35	12	0	0
100%	99%	96%	91%	84%	75%	65%	53%	41%	30%	21%	15%	11%	8%	5%	3%	2%	1%	0%	0%

Intensities in 90° c-plane

0°	5°	10°	15°	20°	25°	30°	35°	40°	45°	50°	55°	60°	65°	70°	75°	80°	85°	90°	95°
2263	2247	2178	2065	1910	1711	1474	1209	925	667	468	335	246	176	118	71	33	8	0	0
100%	99%	96%	91%	84%	76%	65%	53%	41%	29%	21%	15%	11%	8%	5%	3%	1%	0%	0%	0%

Intensities in 180° c-plane

0°	5°	10°	15°	20°	25°	30°	35°	40°	45°	50°	55°	60°	65°	70°	75°	80°	85°	90°	95°
2263	2243	2172	2061	1905	1706	1473	1205	930	677	479	343	249	178	120	73	35	12	0	0
100%	99%	96%	91%	84%	75%	65%	53%	41%	30%	21%	15%	11%	8%	5%	3%	2%	1%	0%	0%

Intensities in 270° c-plane

0°	5°	10°	15°	20°	25°	30°	35°	40°	45°	50°	55°	60°	65°	70°	75°	80°	85°	90°	95°
2263	2247	2178	2065	1910	1711	1474	1209	925	667	468	335	246	176	118	71	33	8	0	0
100%	99%	96%	91%	84%	76%	65%	53%	41%	29%	21%	15%	11%	8%	5%	3%	1%	0%	0%	0%

Beam angle 50%	Field angle 10%	Cutoff angle 2,5%	Intensity ratio in 120° cone	Intensity ratio in 90° cone
72,8°	122,9°	153,9°	92,1%	76,3%

UGR

Glare Evaluation According to UGR

p Ceiling		70	70	50	50	30	70	70	50	50	30
p Walls		50	30	50	30	30	50	30	50	30	30
p Floor		20	20	20	20	20	20	20	20	20	20
Room size X Y		Viewing direction at right angles to lamp axis					Viewing direction parallel to lamp axis				
2H	2H	25,5	26,4	25,6	26,7	26,9	25,4	26,3	25,6	26,6	26,8
	3H	25,9	26,9	26,3	27,2	27,4	25,9	26,9	26,3	27,1	27,3
	4H	26,1	27,1	26,5	27,3	27,6	26,0	27,0	26,4	27,3	27,5
	6H	26,3	27,1	26,6	27,4	27,7	26,2	27,0	26,5	27,3	27,7
	8H	26,3	27,1	26,6	27,4	27,8	26,2	27,0	26,5	27,3	27,7
	12H	26,2	27,0	26,6	27,3	27,8	26,1	26,9	26,5	27,3	27,7
4H	2H	25,6	26,6	26,0	26,8	27,1	25,5	26,5	26,0	26,8	27,0
	3H	26,4	27,1	26,7	27,5	27,9	26,3	27,1	26,7	27,4	27,9
	4H	26,6	27,3	27,0	27,7	28,2	26,5	27,2	27,0	27,7	28,2
	6H	26,7	27,4	27,2	27,8	28,1	26,7	27,4	27,2	27,7	28,1
	8H	26,7	27,4	27,3	27,7	28,1	26,7	27,3	27,2	27,7	28,0
	12H	26,7	27,3	27,2	27,7	28,1	26,6	27,2	27,1	27,6	28,0
8H	4H	26,6	27,3	27,2	27,6	28,0	26,6	27,2	27,1	27,6	28,0
	6H	26,9	27,3	27,4	27,8	28,3	26,8	27,3	27,3	27,7	28,3
	8H	27,0	27,3	27,5	27,9	28,5	26,9	27,3	27,4	27,8	28,4
	12H	27,0	27,3	27,5	27,8	28,4	26,9	27,2	27,4	27,7	28,3
12H	4H	26,6	27,1	27,1	27,5	28,0	26,6	27,1	27,1	27,5	28,0
	6H	26,9	27,3	27,4	27,8	28,4	26,8	27,2	27,3	27,7	28,4
	8H	26,9	27,3	27,5	27,8	28,4	26,9	27,2	27,4	27,7	28,3
Variation of the observer position for the luminaire distance S											
S = 1.0H		0,5 / -0,7					0,5 / -0,8				
S = 1.5H		1,3 / -1,4					1,4 / -1,4				
S = 2.0H		2,3 / -2,1					2,4 / -2,1				
Standard table		n/a					n/a				
Correction summand		n/a					n/a				
Corrected glare indices referring to 3429 lm total luminous flux											

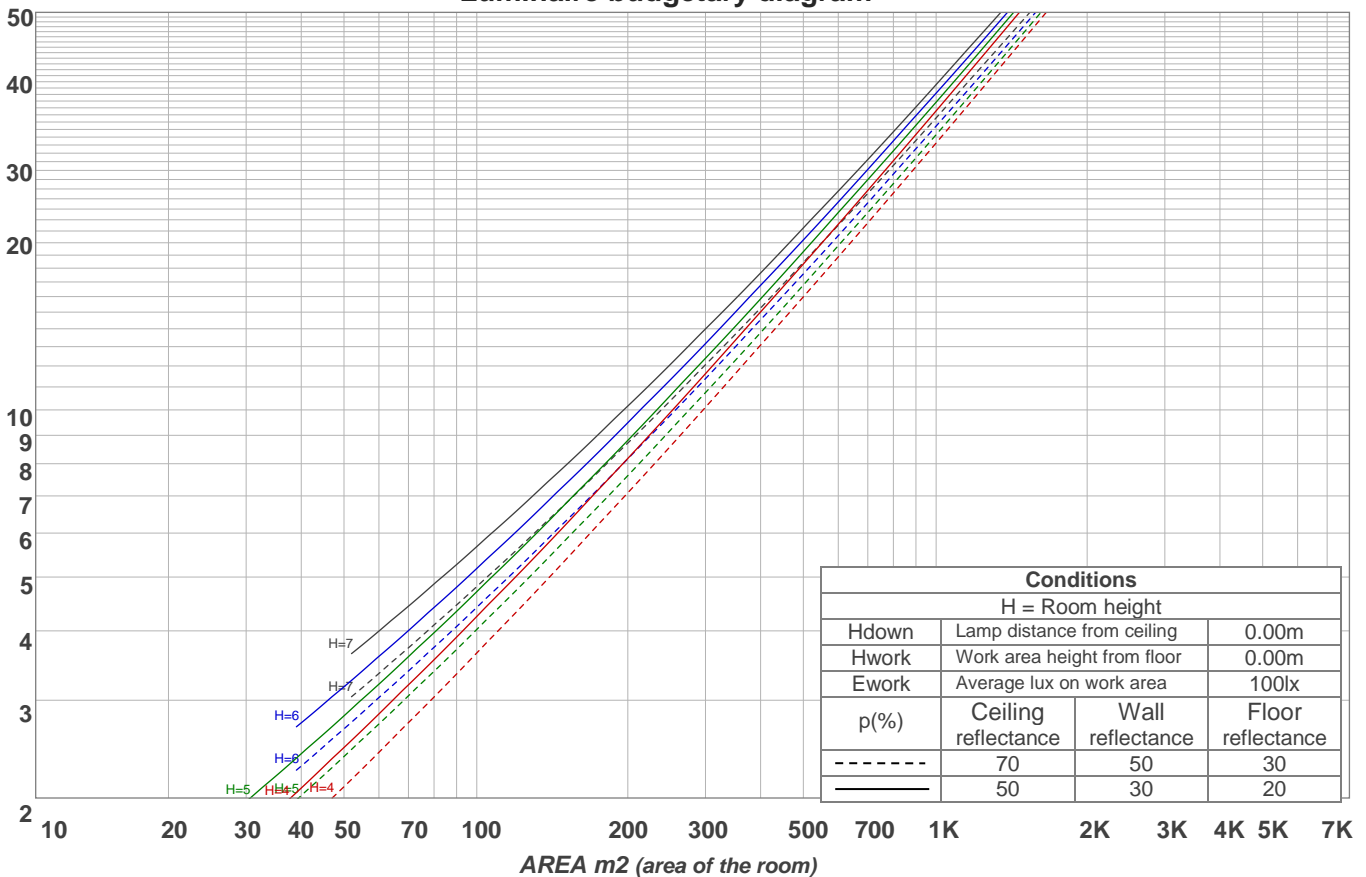
Light planning

Coefficients of Utilization

Ceiling reflectance	80				70				50			30			10			0
Wall reflectance	70	50	30	10	70	50	30	10	50	30	10	50	30	10	50	30	10	0
Floor reflectance	20	20	20	20	20	20	20	20	20	20	20	20	20	20	20	20	20	0
RCR	(RCR: Room Cavity Ratio) Room Values are expressed as percentage of Lumens delivered to the task surface																	
0	119	119	119	119	116	116	116	116	111	111	111	106	106	106	102	102	102	100
1	111	108	105	102	109	106	103	100	101	99	97	98	96	94	94	93	91	89
2	104	97	92	88	101	96	91	87	92	88	85	89	86	83	86	83	81	79
3	97	88	82	77	94	87	81	76	84	79	75	81	77	73	79	75	72	70
4	90	80	73	68	88	79	72	67	77	71	66	74	70	66	72	68	65	63
5	84	73	66	60	82	72	65	60	70	64	60	69	63	59	67	62	58	57
6	79	67	60	54	77	66	59	54	65	59	54	63	58	53	62	57	53	51
7	74	62	55	49	72	61	54	49	60	54	49	59	53	49	57	52	48	47
8	69	58	50	45	68	57	50	45	56	49	45	55	49	45	53	48	44	43
9	65	54	46	41	64	53	46	41	52	46	41	51	45	41	50	45	41	39
10	62	50	43	38	60	49	43	38	49	42	38	48	42	38	47	42	38	36

LAMPS (number of lamps)

Luminaire budgetary diagram

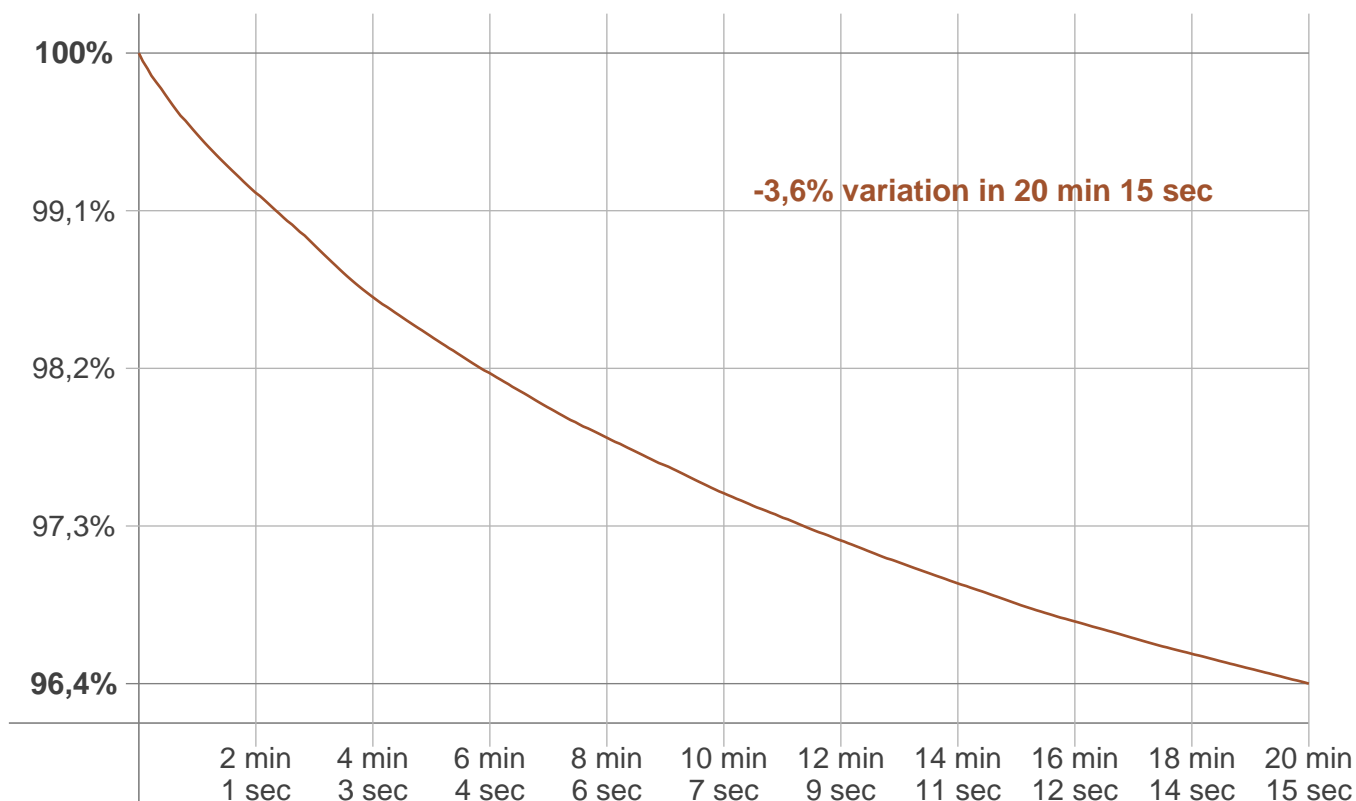


Zonal Lumen Summary

0°-10°	10°-20°	20°-30°	30°-40°	40°-50°	50°-60°	60°-70°	70°-80°	80°-90°
212 lm	578 lm	781 lm	750 lm	525 lm	311 lm	177 lm	77,7 lm	14,1 lm
90°-100°	100°-110°	110°-120°	120°-130°	130°-140°	140°-150°	150°-160°	160°-170°	170°-180°
0,148 lm	0,201 lm	0,313 lm	0,430 lm	0,514 lm	0,528 lm	0,451 lm	0,299 lm	0,105 lm

Stabilization

Warmup curve



Warmup result

Warmup time:	20 min 15 sec
Warmup variation	-3,6%

Warmup conditions

Stable period:	15 min
Stable change max:	2,0%
Minimum time:	15 min

Color temperature change

CCT start	CCT change	CCT end
2923 K	+11 K	2934 K

Output change

Output start	Output change	Output end
3553 lm	-124 lm	3429 lm