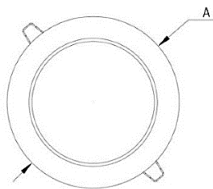




Dimensiones (mm)

A: Ø140



Corte: Ø126

Código

KT6617-12W-4K

Descripción

Luminaria tipo bala, diseñada con módulo de LED integrado. Empotrada al techo por medio de sujetadores ubicados en los laterales. Compuesta por un difusor en acrílico opal.



Materiales y acabado

Sujetadores en hierro, recubiertos en plástico inyectado. Resortes en hierro con acabado galvanizado. Cuerpo y aro plástico inyectado.

Color

Blanco.

Características técnicas

LED	 116°	 50,000h	IP 20	IK 02
PF 0,96	THD <30%	°C 0-40	V 100-240	Hz 50/60

Fuente de luz

Bala con módulo de LED.

Potencia de Salida	CRI	K	Lm / W	Lm de Salida
11,5W	>80	4000	107	1238

Características de fuente de luz

- Color temperatura disponible 4000K (neutro).

Light efficiency:



Light quality:



Color temperature:



Output: 1238 lm

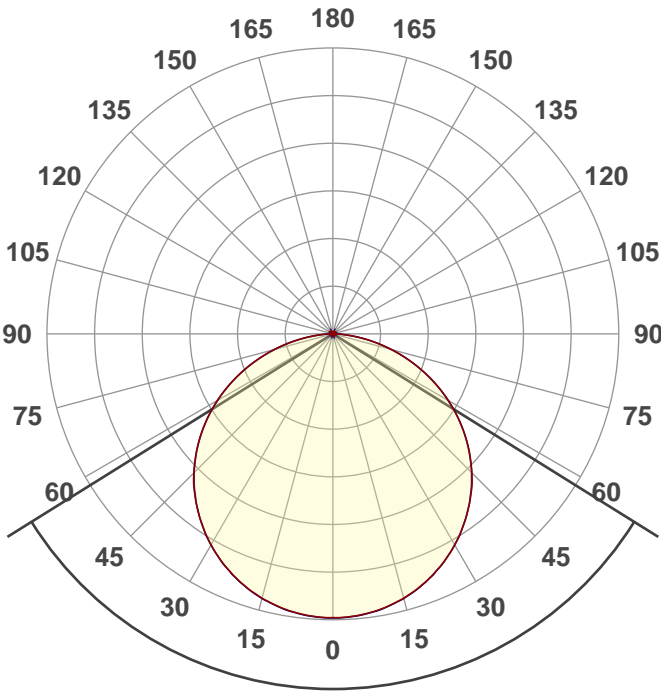
Peak: 416 cd

Power: 11,5 W

PF: 0,96



Product name:
E0375-KT6617-12W-AM-4K



Beam angle **116,1°**



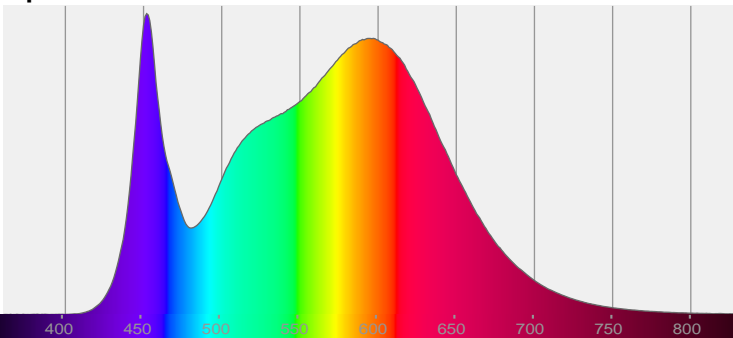
CIE 1931
x: 0,382
y: 0,379

THD Values:

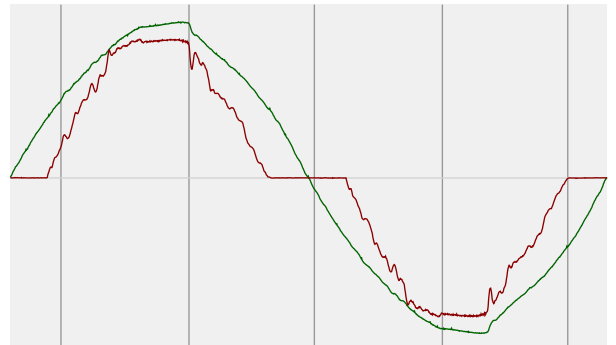
Voltage: 2,79%

Current: 28,35%

Spectra

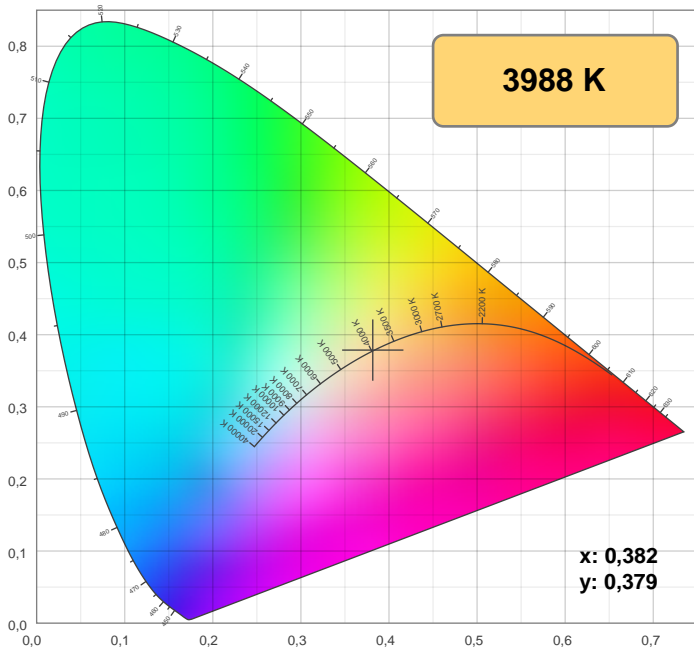


Power



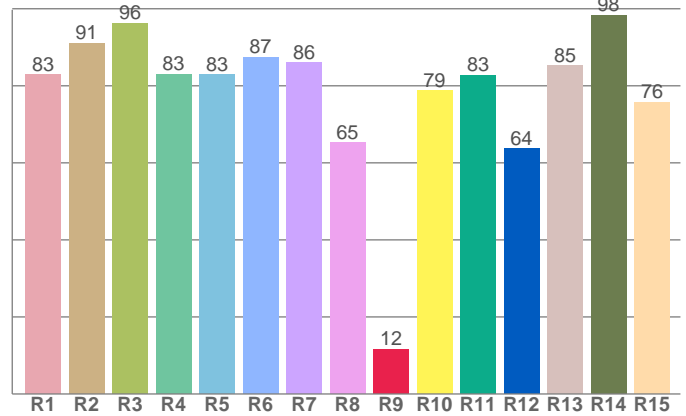
Voltage: 116 V
Current: 0,104 A
Frequency: 60,1 Hz

Color details



CIE 1931

CRI: 84,3 (R1-R8)

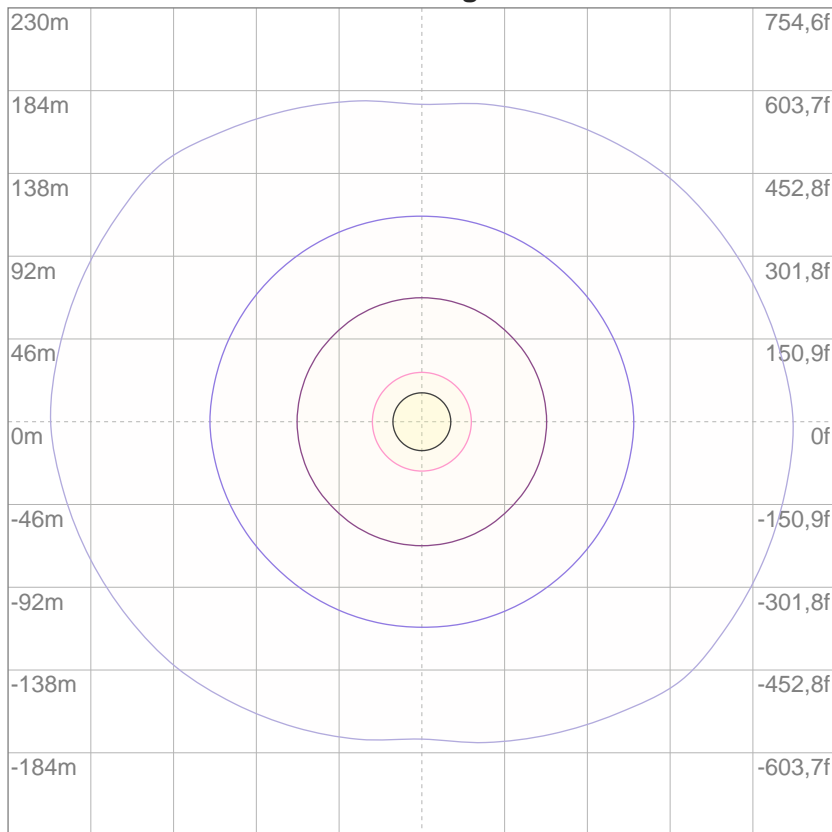


CRI R values, only R1-R8 are used to calculate final CRI value

R1	R2	R3	R4	R5	R6	R7	R8	9	R10	R11	R12	R13	R14	R15
82,9	91,0	96,2	83,0	82,8	87,5	86,0	65,2	11,6	78,7	82,7	63,6	85,2	98,4	75,7

ISO Diagrams

ISO lux diagram



Mounting height: 10 meters (33 f)

3%	0,125 lx
5%	0,208 lx
10%	0,415 lx
30%	1,25 lx
50%	2,08 lx

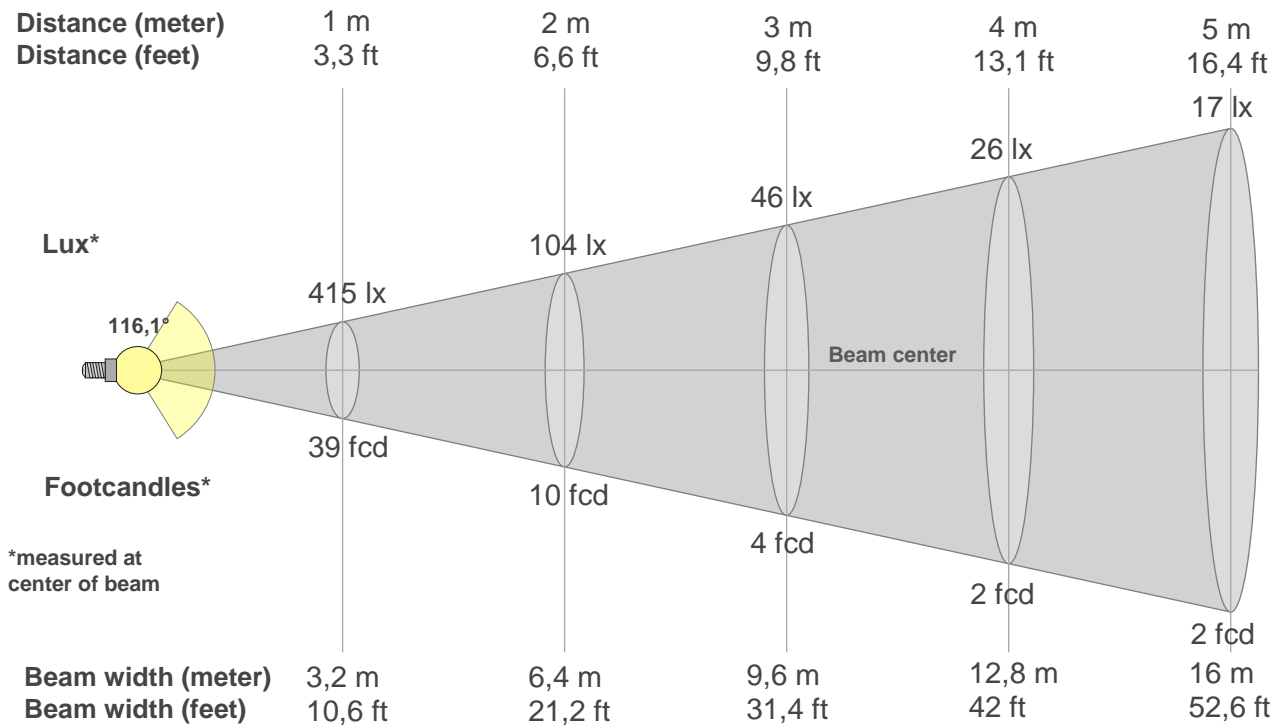
Conditions:

Number of c-planes: 8

Lux at center: 4,15 lx

Lux distribution on a surface when lamp is mounted at 10 meters from the surface.

Beam details



Beam intensities from 1-20m

1m	2m	3m	4m	5m	6m	7m	8m	9m	10m	11m	12m	13m	14m	15m	16m	17m	18m	19m	20m
3,3ft	6,6ft	9,8ft	13,1ft	16,4ft	19,7ft	23ft	26,2ft	29,5ft	32,8ft	36,1ft	39,4ft	42,7ft	45,9ft	49,2ft	52,5ft	55,8ft	59,1ft	62,3ft	65,6ft
415lx	104lx	46lx	26lx	17lx	12lx	8lx	6lx	5lx	4lx	3lx	3lx	2lx	2lx	2lx	2lx	1lx	1lx	1lx	1lx
38,6fcd	9,6fcd	4,3fcd	2,4fcd	1,5fcd	1,1fcd	0,8fcd	0,6fcd	0,5fcd	0,4fcd	0,3fcd	0,3fcd	0,2fcd	0,2fcd	0,2fcd	0,2fcd	0,1fcd	0,1fcd	0,1fcd	0,1fcd

Intensities in 0° c-plane

0°	5°	10°	15°	20°	25°	30°	35°	40°	45°	50°	55°	60°	65°	70°	75°	80°	85°	90°	95°
415	413	408	400	388	374	356	336	313	288	259	228	195	160	125	89	54	22	5	0
100%	100%	98%	96%	94%	90%	86%	81%	75%	69%	62%	55%	47%	39%	30%	21%	13%	5%	1%	0%

Intensities in 90° c-plane

0°	5°	10°	15°	20°	25°	30°	35°	40°	45°	50°	55°	60°	65°	70°	75°	80°	85°	90°	95°
415	414	409	401	389	374	356	336	312	287	258	228	195	160	124	88	53	21	2	0
100%	100%	98%	96%	94%	90%	86%	81%	75%	69%	62%	55%	47%	39%	30%	21%	13%	5%	1%	0%

Intensities in 180° c-plane

0°	5°	10°	15°	20°	25°	30°	35°	40°	45°	50°	55°	60°	65°	70°	75°	80°	85°	90°	95°
415	413	408	400	388	374	356	336	313	288	259	228	195	160	125	89	54	22	5	0
100%	100%	98%	96%	94%	90%	86%	81%	75%	69%	62%	55%	47%	39%	30%	21%	13%	5%	1%	0%

Intensities in 270° c-plane

0°	5°	10°	15°	20°	25°	30°	35°	40°	45°	50°	55°	60°	65°	70°	75°	80°	85°	90°	95°
415	414	409	401	389	374	356	336	312	287	258	228	195	160	124	88	53	21	2	0
100%	100%	98%	96%	94%	90%	86%	81%	75%	69%	62%	55%	47%	39%	30%	21%	13%	5%	1%	0%

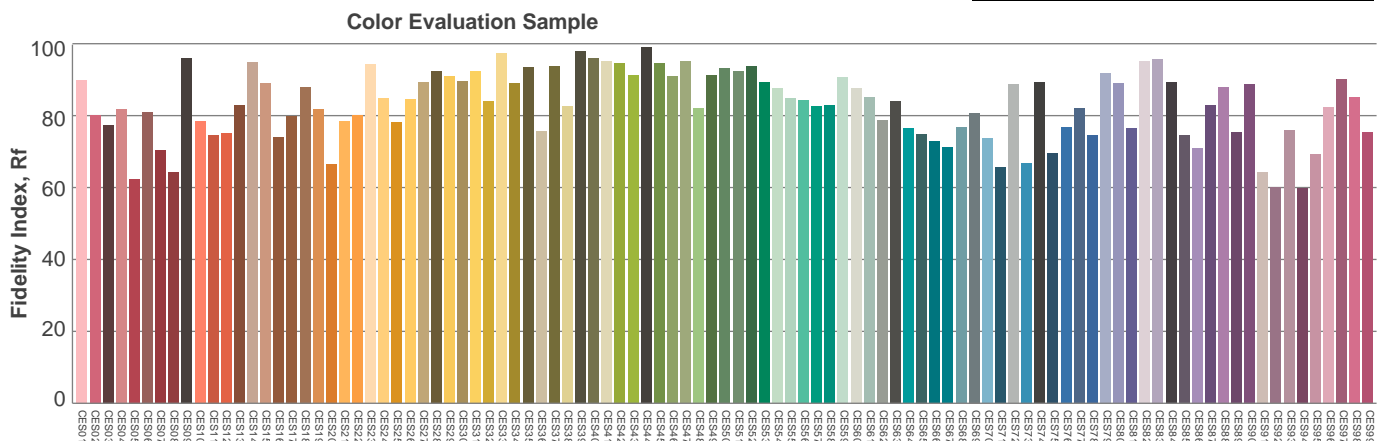
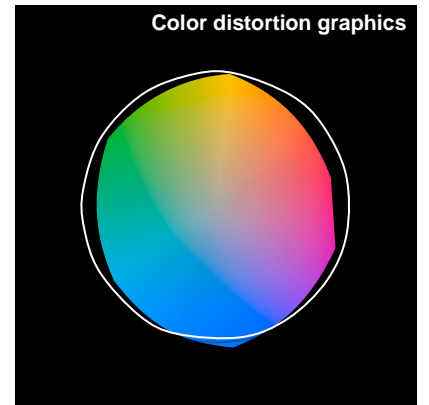
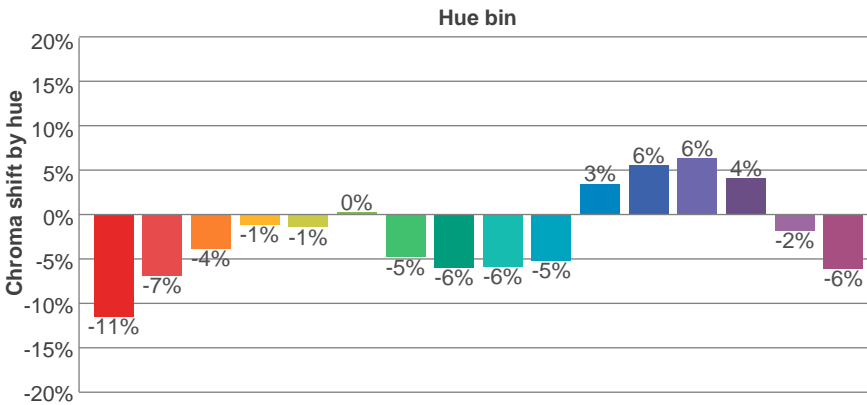
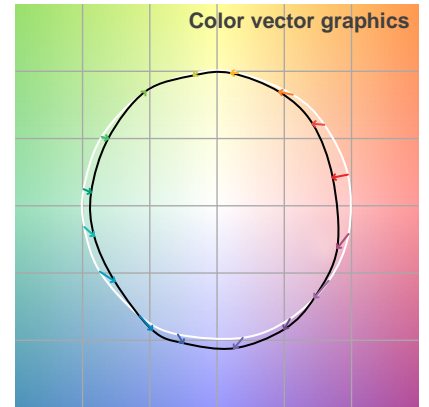
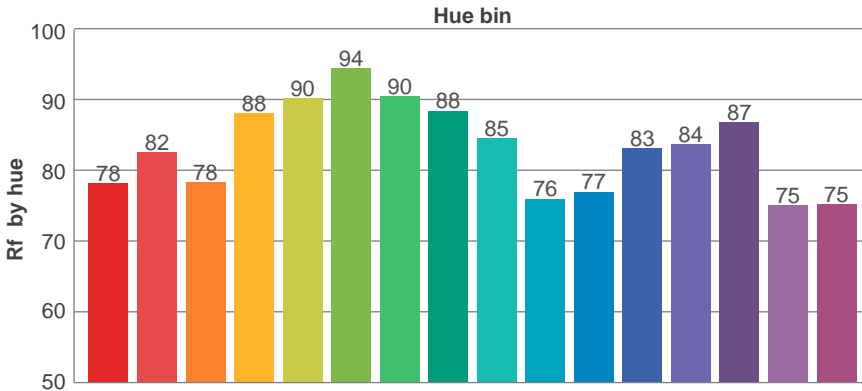
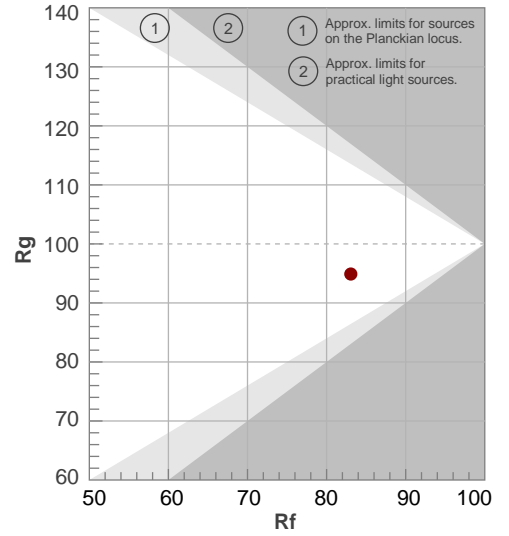
Beam angle 50%	Field angle 10%	Cutoff angle 2,5%	Intensity ratio in 120° cone	Intensity ratio in 90° cone
116,1°	163,5°	175,5°	77,5%	52,2%

TM30 details

Rf 83,1
Fidelity index Rf

Rg 94,9
Gammut index Rg

Hue Bin	R _f	Graphic shifts (%)	
		Chroma	Hue
1	78	-11%	0%
2	82	-7%	6%
3	78	-4%	9%
4	88	-1%	5%
5	90	-1%	3%
6	94	0%	-1%
7	90	-5%	-2%
8	88	-6%	1%
9	85	-6%	8%
10	76	-5%	12%
11	77	3%	13%
12	83	6%	5%
13	84	6%	-8%
14	87	4%	-8%
15	75	-2%	-16%
16	75	-6%	-12%



UGR

Glare Evaluation According to UGR

p Ceiling	70	70	50	50	30	70	70	50	50	30	
p Walls	50	30	50	30	30	50	30	50	30	30	
p Floor	20	20	20	20	20	20	20	20	20	20	
Room size X Y	Viewing direction at right angles to lamp axis					Viewing direction parallel to lamp axis					
2H	2H	25,7	27,0	26,0	27,2	27,5	25,6	27,0	25,9	27,2	27,5
	3H	27,3	28,5	27,6	28,8	29,1	27,3	28,5	27,6	28,8	29,1
	4H	28,0	29,1	28,3	29,4	29,7	28,0	29,1	28,3	29,4	29,7
	6H	28,5	29,5	28,8	29,9	30,2	28,5	29,5	28,8	29,8	30,2
	8H	28,6	29,7	29,0	30,0	30,3	28,6	29,6	29,0	30,0	30,3
	12H	28,7	29,7	29,1	30,0	30,4	28,7	29,7	29,1	30,0	30,4
4H	2H	26,4	27,5	26,7	27,8	28,1	26,4	27,5	26,7	27,8	28,1
	3H	28,2	29,2	28,6	29,5	29,9	28,2	29,2	28,6	29,5	29,8
	4H	29,0	29,9	29,4	30,2	30,6	29,0	29,9	29,4	30,2	30,6
	6H	29,6	30,4	30,1	30,8	31,2	29,6	30,4	30,0	30,8	31,2
	8H	29,8	30,5	30,3	30,9	31,4	29,8	30,5	30,3	30,9	31,3
	12H	30,0	30,6	30,4	31,0	31,5	30,0	30,6	30,4	31,0	31,4
8H	4H	29,3	30,0	29,8	30,4	30,9	29,3	30,0	29,8	30,4	30,8
	6H	30,1	30,7	30,6	31,1	31,6	30,1	30,7	30,6	31,1	31,6
	8H	30,4	30,9	30,9	31,3	31,8	30,4	30,9	30,9	31,3	31,8
	12H	30,6	31,0	31,1	31,5	32,0	30,6	31,0	31,1	31,5	32,0
12H	4H	29,4	30,0	29,8	30,4	30,9	29,4	30,0	29,8	30,4	30,8
	6H	30,2	30,7	30,7	31,1	31,6	30,2	30,7	30,6	31,1	31,6
	8H	30,5	30,9	31,0	31,4	31,9	30,5	30,9	31,0	31,4	31,9
Variation of the observer position for the luminaire distance S											
S = 1,0H	+0,1 / -0,1					+0,1 / -0,1					
S = 1,5H	+0,2 / -0,3					+0,2 / -0,3					
S = 2,0H	+0,4 / -0,6					+0,4 / -0,6					
Standard table	BK06					BK06					
Correction summand	13,2					13,1					
Corrected glare indices referring to 1238 lm total luminous flux											

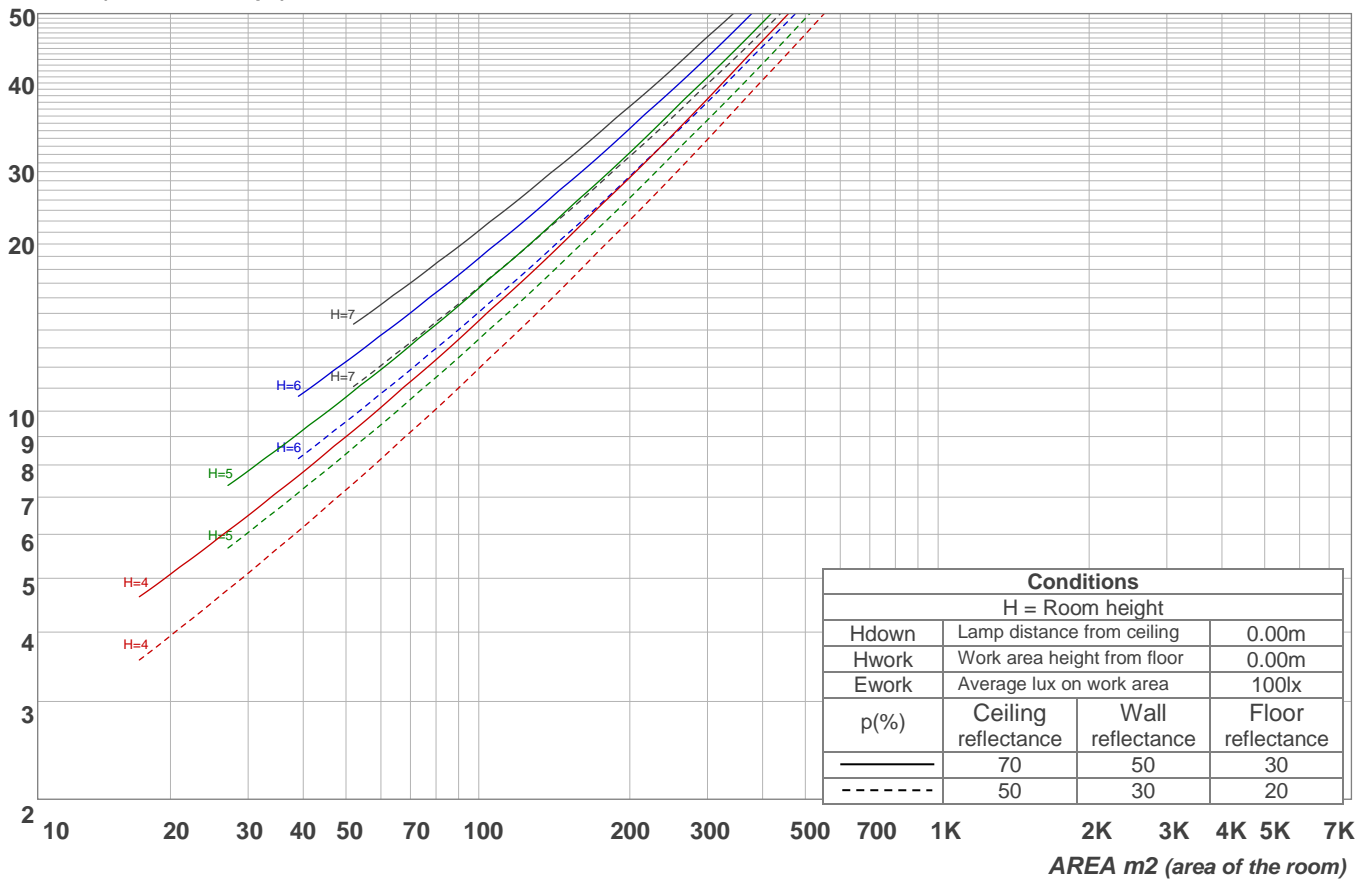
Light planning

Coefficients of Utilization

Ceiling reflectance	80				70				50			30			10			0			
Wall reflectance	70	50	30	10	70	50	30	10	50	30	10	50	30	10	50	30	10	0			
Floor reflectance	20	20	20	20	20	20	20	20	20	20	20	20	20	20	20	20	20	20	20	20	0
RCR	(RCR: Room Cavity Ratio) Room Values are expressed as percentage of Lumens delivered to the task surface																				
0	119	119	119	119	116	116	116	116	111	111	111	106	106	106	102	102	102	100	100	100	
1	108	103	99	95	106	101	97	94	97	94	91	93	90	88	89	87	85	83	83	83	
2	98	90	83	77	96	88	82	76	84	79	74	81	77	73	78	74	71	69	69	69	
3	89	79	70	64	87	77	69	63	74	67	62	71	66	61	69	64	60	58	58	58	
4	82	70	61	54	79	68	60	53	66	58	53	63	57	52	61	56	51	49	49	49	
5	75	62	53	46	73	61	52	46	59	51	45	57	50	45	55	49	44	42	42	42	
6	69	56	47	40	67	55	46	40	53	45	40	51	44	39	50	44	39	37	37	37	
7	64	50	42	35	62	50	41	35	48	40	35	47	40	35	45	39	34	32	32	32	
8	60	46	37	31	58	45	37	31	44	36	31	43	36	31	41	35	31	29	29	29	
9	56	42	34	28	54	42	34	28	40	33	28	39	33	28	38	32	28	26	26	26	
10	52	39	31	26	51	38	31	25	37	30	25	36	30	25	35	29	25	23	23	23	

LAMPS (number of lamps)

Luminaire budgetary diagram

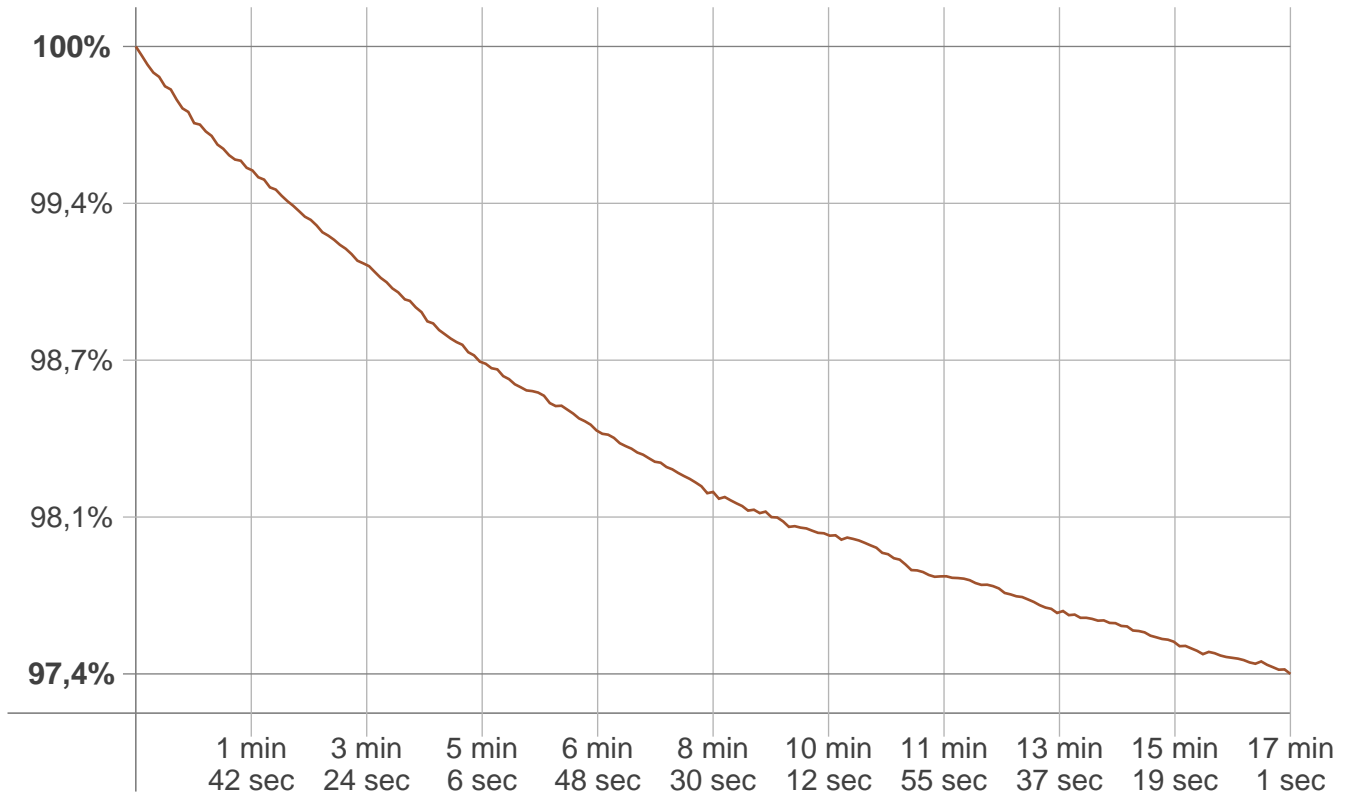


Zonal Lumen Summary

0°-10°	10°-20°	20°-30°	30°-40°	40°-50°	50°-60°	60°-70°	70°-80°	80°-90°
39,3 lm	113 lm	172 lm	210 lm	221 lm	203 lm	158 lm	93,3 lm	26,3 lm
90°-100°	100°-110°	110°-120°	120°-130°	130°-140°	140°-150°	150°-160°	160°-170°	170°-180°
0,493 lm	0,073 lm	0,089 lm	0,097 lm	0,088 lm	0,071 lm	0,050 lm	0,029 lm	0,008 lm

Stabilization

Warmup curve



Warmup result

Warmup time:	17 min 1 sec
Warmup variation	-2,6%

Warmup conditions

Stable period:	15 min
Stable change max:	2,0%
Minimum time:	15 min

Color temperature change

CCT start	CCT change	CCT end
3964 K	+24 K	3988 K

Output change

Output start	Output change	Output end
1268 lm	-30 lm	1238 lm