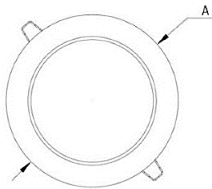




Dimensiones (mm)

A: Ø140
Altura: 2,9.



Corte: Ø125

Código

KT6617-LV-12W-4K

Descripción

Luminaria tipo bala, diseñada con módulo de LED integrado. Empotrada al techo por medio de sujetadores ubicados en los laterales. Compuesta por un difusor en acrílico opal.



Materiales y acabado

Sujetadores en hierro, recubiertos en plástico inyectado. Resortes en hierro con acabado galvanizado. Cuerpo y aro plástico inyectado.

Color

Blanco.

Características técnicas

LED	 116°	 50,000h	IP 20	IK 02
PF 0,99	THD <10%	°C 0-40	V 100-240	Hz 50/60

Fuente de luz

Bala con módulo de LED.

Potencia de Salida	CRI	K	Lm / W	Lm de Salida
11,4W	>80	4000	99	1136

Características de fuente de luz

- Color temperatura disponible 4000K (neutro).

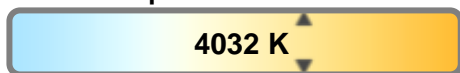
Light efficiency:



Light quality:



Color temperature:



Output: 1136 lm

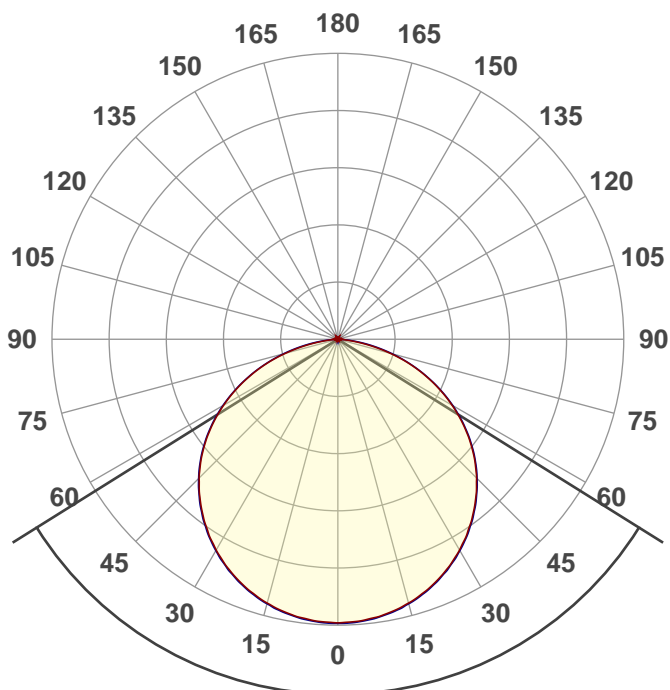
Peak: 387 cd

Power: 11,4 W

PF: 0,99



Product name:
E0645-KT6617-LV-12W-4K



Beam angle **116°**



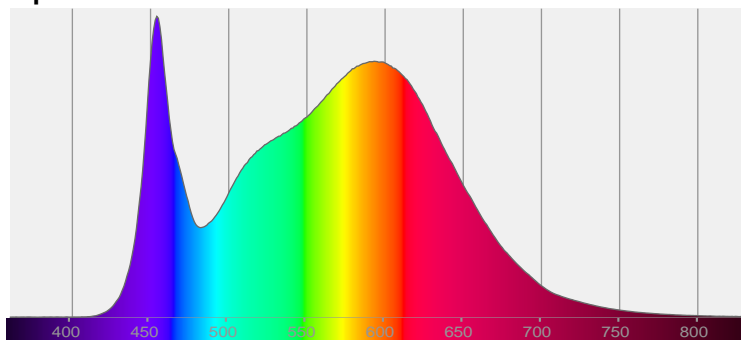
CIE 1931
x: 0,380
y: 0,377

THD Values:

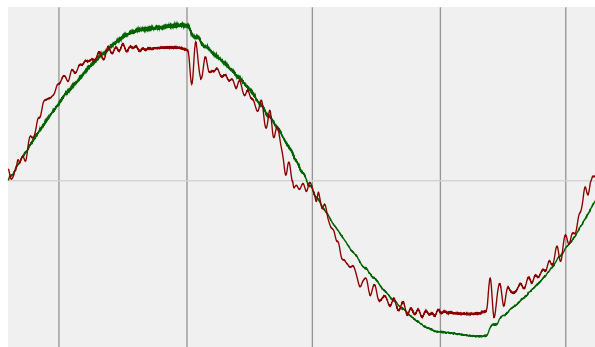
Voltage: 2%

Current: 9,13%

Spectra



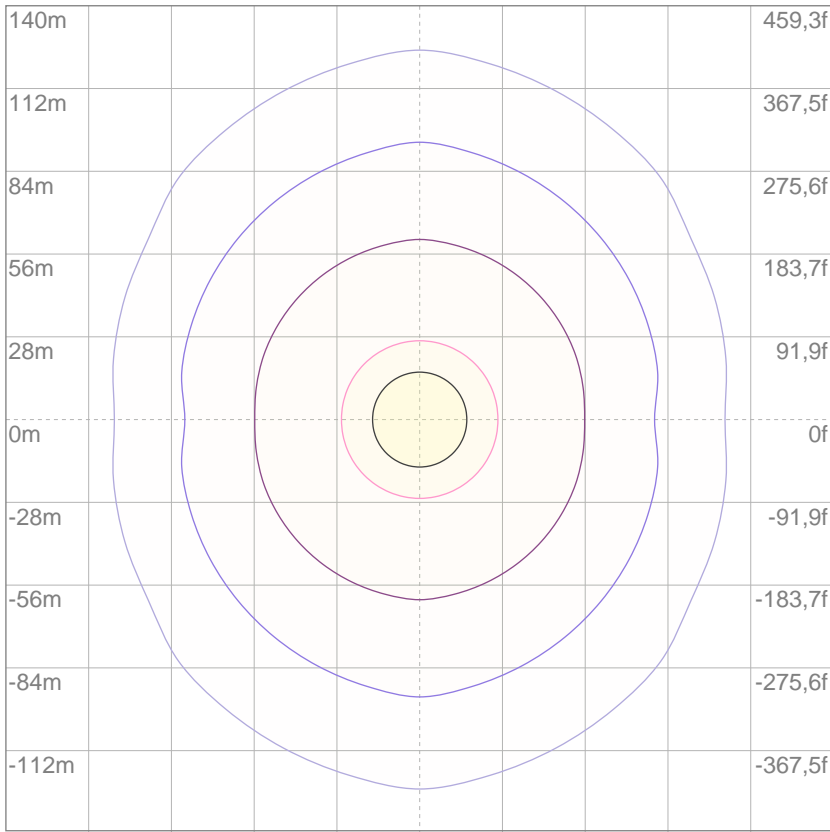
Power



Voltage: 113 V
Current: 0,102 A
Frequency: 60 Hz

ISO Diagrams

ISO lux diagram



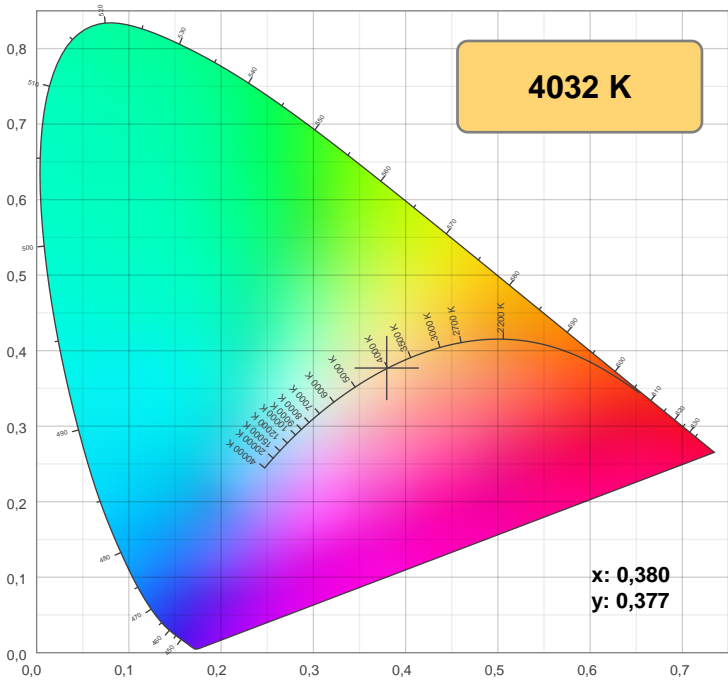
3%	0,116 lx
5%	0,193 lx
10%	0,387 lx
30%	1,16 lx
50%	1,93 lx

Conditions:
 Number of c-planes: 4
 Lux at center: 3,87 lx

Lux distribution on a surface when lamp is mounted at 10 meters from the surface.

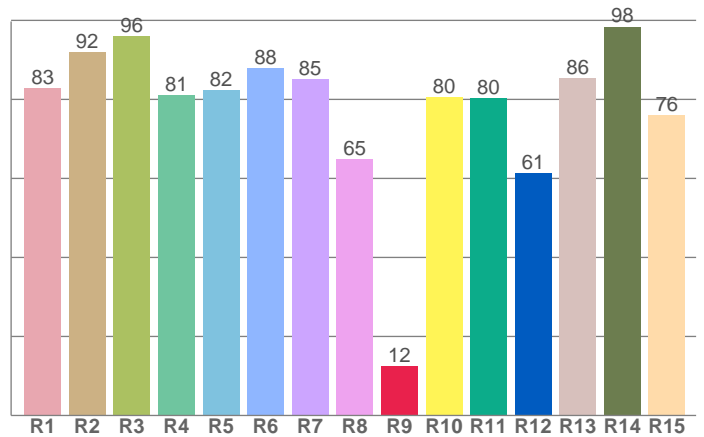
Mounting height: 10 meters (33 f)

Color details



CIE 1931

CRI: 84,0 (R1-R8)



CRI R values, only R1-R8 are used to calculate final CRI value

R1	R2	R3	R4	R5	R6	R7	R8	R9	R10	R11	R12	R13	R14	R15
82,8	92,0	96,0	81,1	82,3	88,0	85,2	64,9	12,5	80,5	80,3	61,4	85,5	98,4	76,1

Color parameters

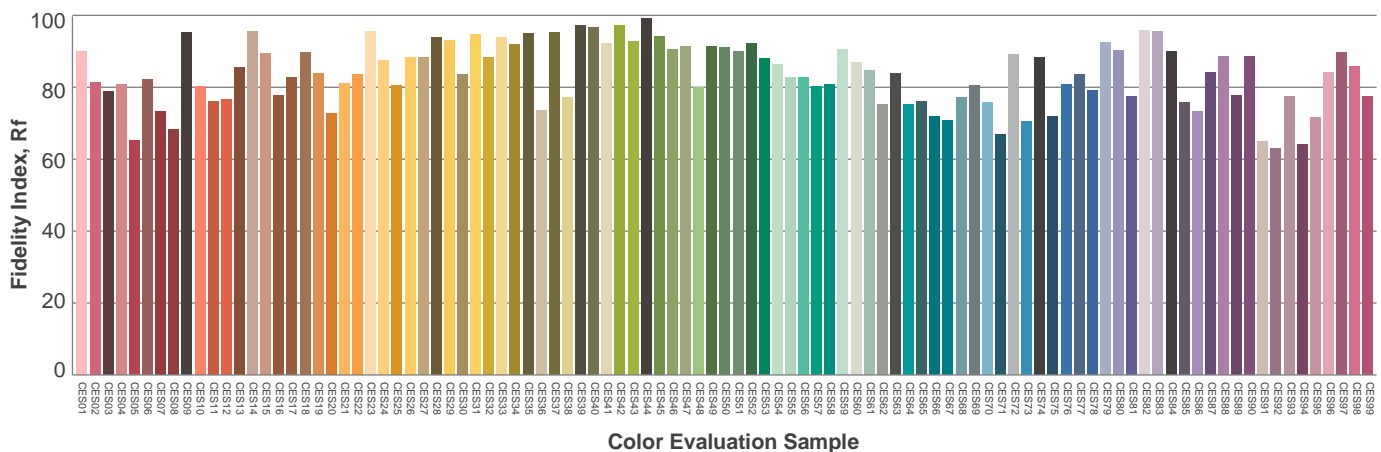
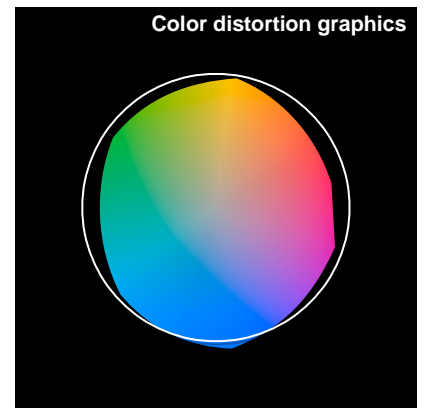
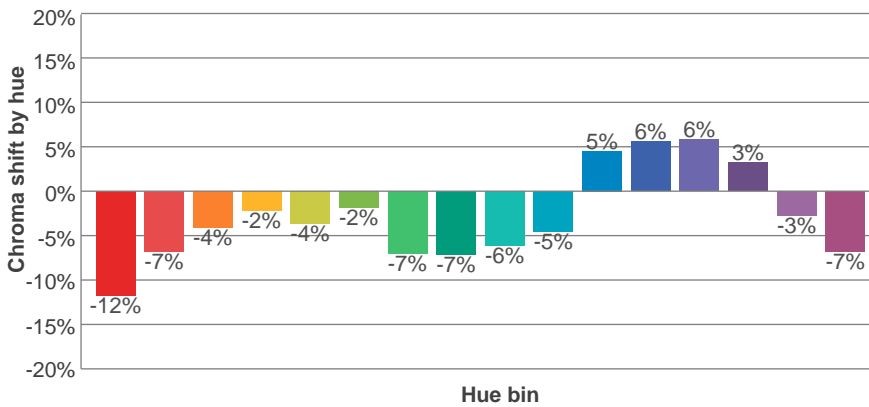
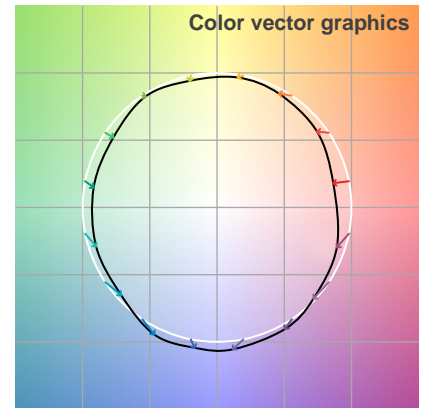
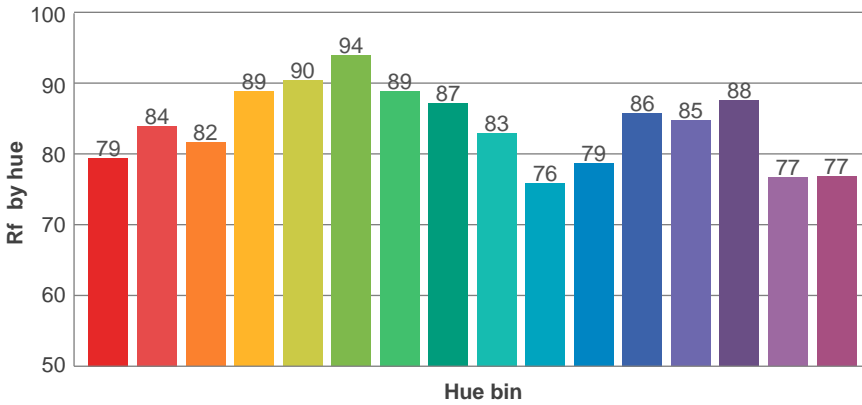
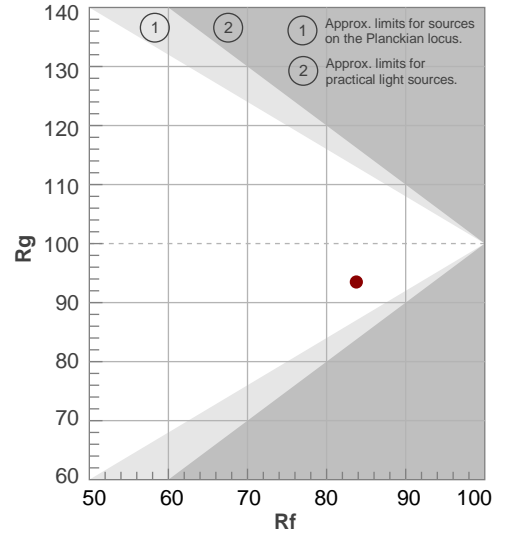
Color temperature	Color rendering index	Red component	Color fidelity	Color gamut	Color quality scale	Color coordinate cie 1931	Color coordinate cie 1931	Color coordinate	Color coordinate	Color deviation from black body
CCT	CRI	CRI R9	TM30 Rf	TM30 Rg	CQS	x	y	u	v	Δuv
4032 K	84,0	12,5	83,8	93,5	82,7	0,380	0,377	0,224	0,334	0,0004

TM-30 details

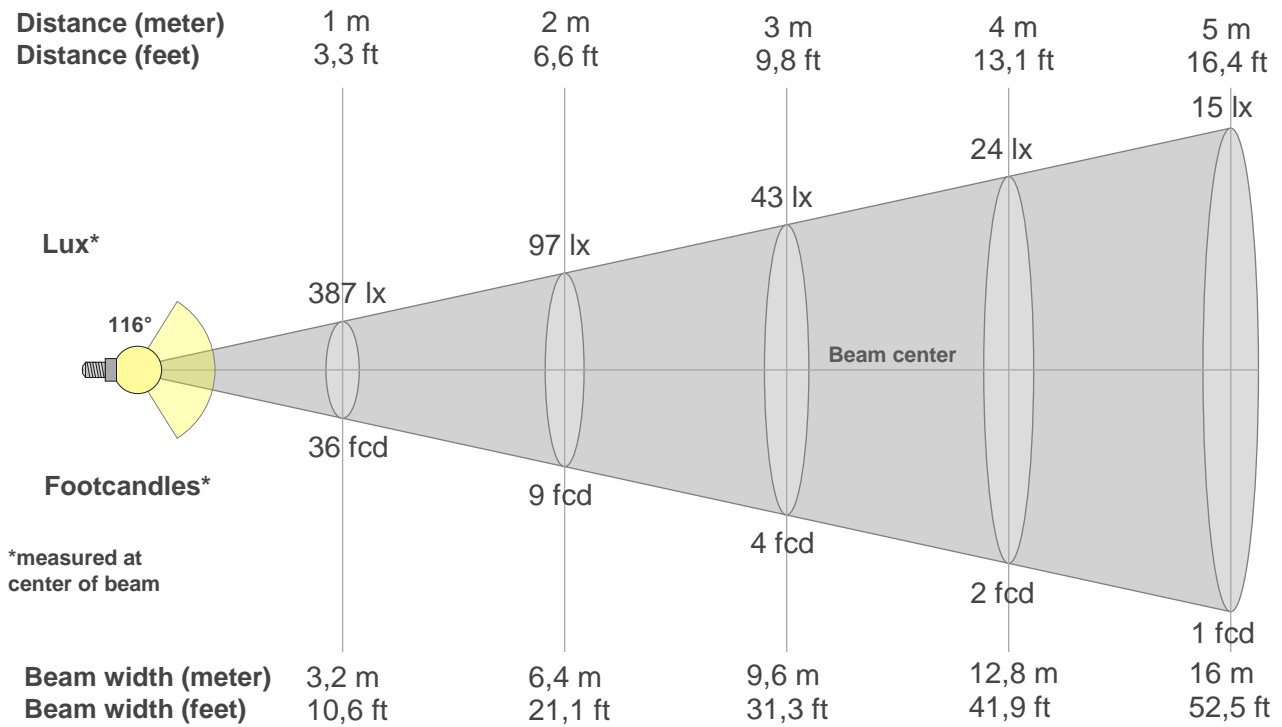
Rf 83,8
Fidelity index Rf

Rg 93,5
Gamut index Rg

Hue Bin	R _f	Shifts (%)	
		Chroma	Hue
1	79	-12%	1%
2	84	-7%	6%
3	82	-4%	9%
4	89	-2%	4%
5	90	-4%	2%
6	94	-2%	-2%
7	89	-7%	0%
8	87	-7%	3%
9	83	-6%	11%
10	76	-5%	14%
11	79	5%	14%
12	86	6%	4%
13	85	6%	-9%
14	88	3%	-8%
15	77	-3%	-16%
16	77	-7%	-12%



Beam details



Beam intensities from 1-20m

(BEAM_INT_TABLE_START)

m	m	m	m	m	m	m	m	m	m	m	m	m	m	m	m	m	m	m	m	m
ft	ft	ft	ft	ft	ft	ft	ft	ft	ft	ft	ft	ft	ft	ft	ft	ft	ft	ft	ft	ft
lx	lx	lx	lx	lx	lx	lx	lx	lx	lx	lx	lx	lx	lx	lx	lx	lx	lx	lx	lx	lx
fcd	fcd	fcd	fcd	fcd	fcd	fcd	fcd	fcd	fcd	fcd	fcd	fcd	fcd	fcd	fcd	fcd	fcd	fcd	fcd	fcd

Intensities in 0° c-plane

0°	5°	10°	15°	20°	25°	30°	35°	40°	45°	50°	55°	60°	65°	70°	75°	80°	85°	90°	95°
387	385	380	372	362	348	332	312	291	267	241	211	180	146	111	74	38	10	0	0
100%	99%	98%	96%	93%	90%	86%	81%	75%	69%	62%	55%	46%	38%	29%	19%	10%	3%	0%	0%

Intensities in 90° c-plane

0°	5°	10°	15°	20°	25°	30°	35°	40°	45°	50°	55°	60°	65°	70°	75°	80°	85°	90°	95°
387	386	381	373	363	349	333	314	292	268	242	213	181	147	112	77	43	14	0	0
100%	100%	98%	96%	94%	90%	86%	81%	76%	69%	63%	55%	47%	38%	29%	20%	11%	4%	0%	0%

Intensities in 180° c-plane

0°	5°	10°	15°	20°	25°	30°	35°	40°	45°	50°	55°	60°	65°	70°	75°	80°	85°	90°	95°
387	385	380	372	362	348	332	312	291	267	241	211	180	146	111	74	38	10	0	0
100%	99%	98%	96%	93%	90%	86%	81%	75%	69%	62%	55%	46%	38%	29%	19%	10%	3%	0%	0%

Intensities in 270° c-plane

0°	5°	10°	15°	20°	25°	30°	35°	40°	45°	50°	55°	60°	65°	70°	75°	80°	85°	90°	95°
387	386	381	373	363	349	333	314	292	268	242	213	181	147	112	77	43	14	0	0
100%	100%	98%	96%	94%	90%	86%	81%	76%	69%	63%	55%	47%	38%	29%	20%	11%	4%	0%	0%

Beam angle 50%	Field angle 10%	Cutoff angle 2,5%	Intensity ratio in 120° cone	Intensity ratio in 90° cone
116°	160,6°	170,9°	78,8%	53,0%

UGR

Glare Evaluation According to UGR

p Ceiling	70	70	50	50	30	70	70	50	50	30	
p Walls	50	30	50	30	30	50	30	50	30	30	
p Floor	20	20	20	20	20	20	20	20	20	20	
Room size X Y	Viewing direction at right angles to lamp axis					Viewing direction parallel to lamp axis					
2H	2H	23,8	25,0	24,0	25,3	25,5	23,8	25,0	24,0	25,3	25,5
	3H	25,2	26,5	25,6	26,8	27,0	25,3	26,5	25,7	26,8	27,0
	4H	25,8	27,0	26,2	27,3	27,6	25,9	27,1	26,3	27,4	27,6
	6H	26,2	27,3	26,5	27,6	28,0	26,3	27,4	26,7	27,7	28,1
	8H	26,3	27,3	26,6	27,6	28,0	26,4	27,5	26,8	27,8	28,2
4H	12H	26,3	27,3	26,6	27,6	28,1	26,5	27,5	26,8	27,8	28,3
	2H	24,4	25,6	24,8	25,9	26,1	24,4	25,6	24,8	25,9	26,1
	3H	26,2	27,2	26,5	27,5	28,0	26,2	27,2	26,6	27,5	28,0
	4H	26,8	27,7	27,2	28,1	28,7	26,8	27,8	27,3	28,2	28,7
	6H	27,2	28,1	27,7	28,5	28,8	27,3	28,2	27,8	28,6	28,9
8H	8H	27,3	28,1	27,8	28,5	28,9	27,5	28,3	28,0	28,6	29,0
	12H	27,3	28,0	27,8	28,4	28,9	27,5	28,2	28,0	28,6	29,1
	4H	27,1	27,9	27,6	28,2	28,6	27,1	27,9	27,6	28,3	28,7
	6H	27,6	28,2	28,1	28,7	29,2	27,7	28,3	28,2	28,8	29,4
	8H	27,8	28,3	28,3	28,8	29,5	28,0	28,5	28,5	29,0	29,6
12H	12H	27,8	28,3	28,4	28,8	29,4	28,1	28,5	28,6	29,0	29,6
	4H	27,1	27,7	27,5	28,1	28,6	27,1	27,8	27,6	28,2	28,7
	6H	27,7	28,2	28,2	28,7	29,4	27,8	28,3	28,3	28,8	29,5
8H	27,8	28,3	28,4	28,8	29,4	28,0	28,5	28,6	29,0	29,6	
Variation of the observer position for the luminaire distance S											
S = 1.0H	0,1 / -0,1					0,1 / -0,1					
S = 1.5H	0,2 / -0,3					0,2 / -0,3					
S = 2.0H	0,5 / -0,6					0,4 / -0,5					
Standard table	n/a					n/a					
Correction summand	n/a					n/a					
Corrected glare indices referring to 1136 lm total luminous flux											

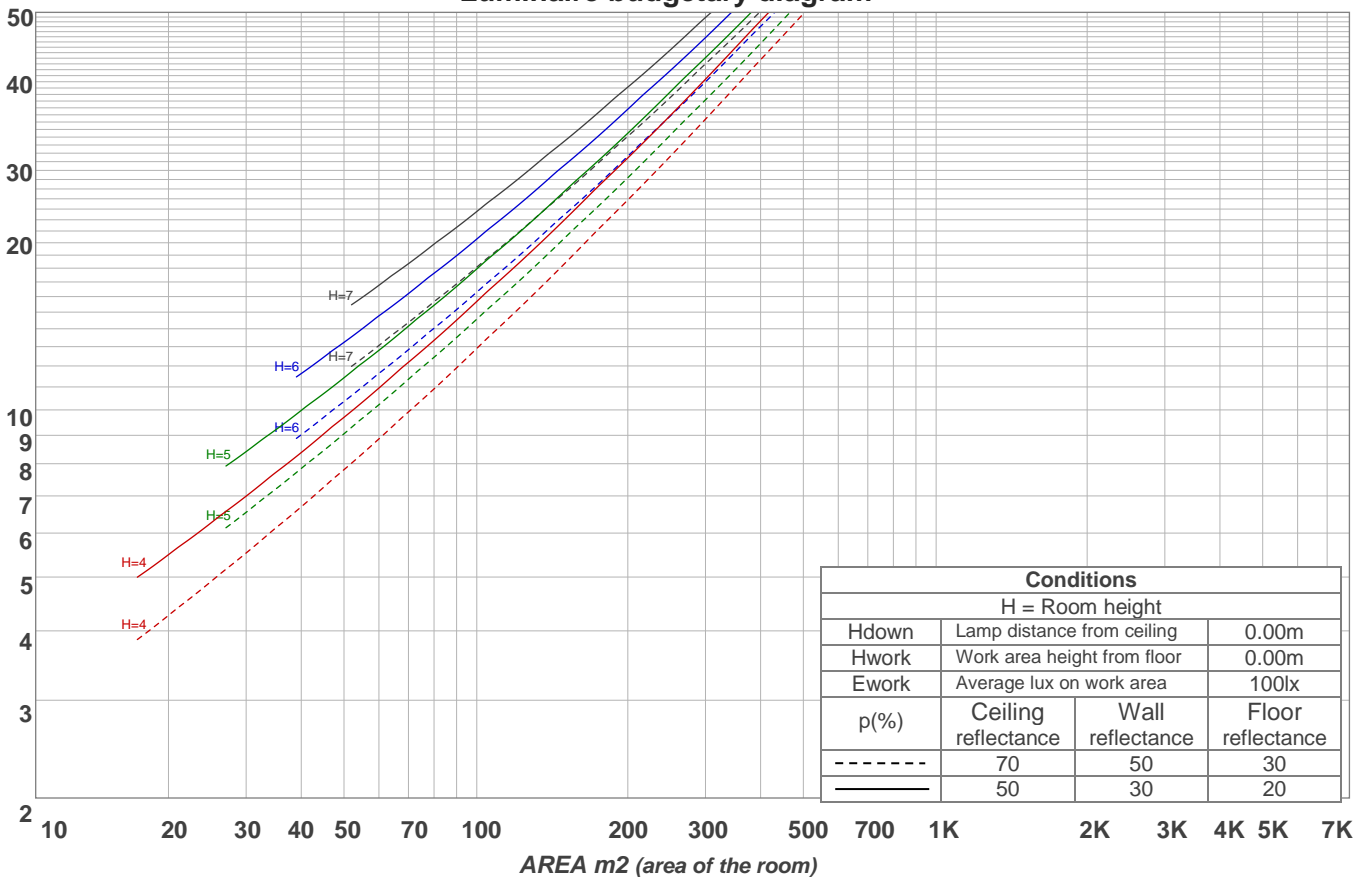
Light planning

Coefficients of Utilization

Ceiling reflectance	80				70				50			30			10			0		
Wall reflectance	70	50	30	10	70	50	30	10	50	30	10	50	30	10	50	30	10	0		
Floor reflectance	20	20	20	20	20	20	20	20	20	20	20	20	20	20	20	20	20	20	20	20
RCR	(RCR: Room Cavity Ratio)																			
	Room Values are expressed as percentage of Lumens delivered to the task surface																			
0	119	119	119	119	116	116	116	116	111	111	111	106	106	106	102	102	102	100		
1	109	104	100	96	106	102	98	94	97	94	91	94	91	89	90	88	86	84		
2	99	90	84	78	96	89	82	77	85	80	75	82	77	73	79	75	72	70		
3	90	79	71	64	87	78	70	64	75	68	63	72	66	62	69	65	61	58		
4	82	70	61	54	80	69	60	54	66	59	53	64	58	53	62	56	52	50		
5	76	63	53	47	73	61	53	46	59	52	46	57	51	45	55	50	45	43		
6	70	56	47	41	68	55	47	40	53	46	40	52	45	40	50	44	39	37		
7	65	51	42	36	63	50	42	36	49	41	35	47	40	35	46	40	35	33		
8	60	46	38	32	58	46	37	32	44	37	32	43	36	31	42	36	31	29		
9	56	43	34	29	55	42	34	29	41	33	28	40	33	28	39	33	28	26		
10	53	39	31	26	51	39	31	26	38	31	26	37	30	26	36	30	25	24		

LAMPS (number of lamps)

Luminaire budgetary diagram

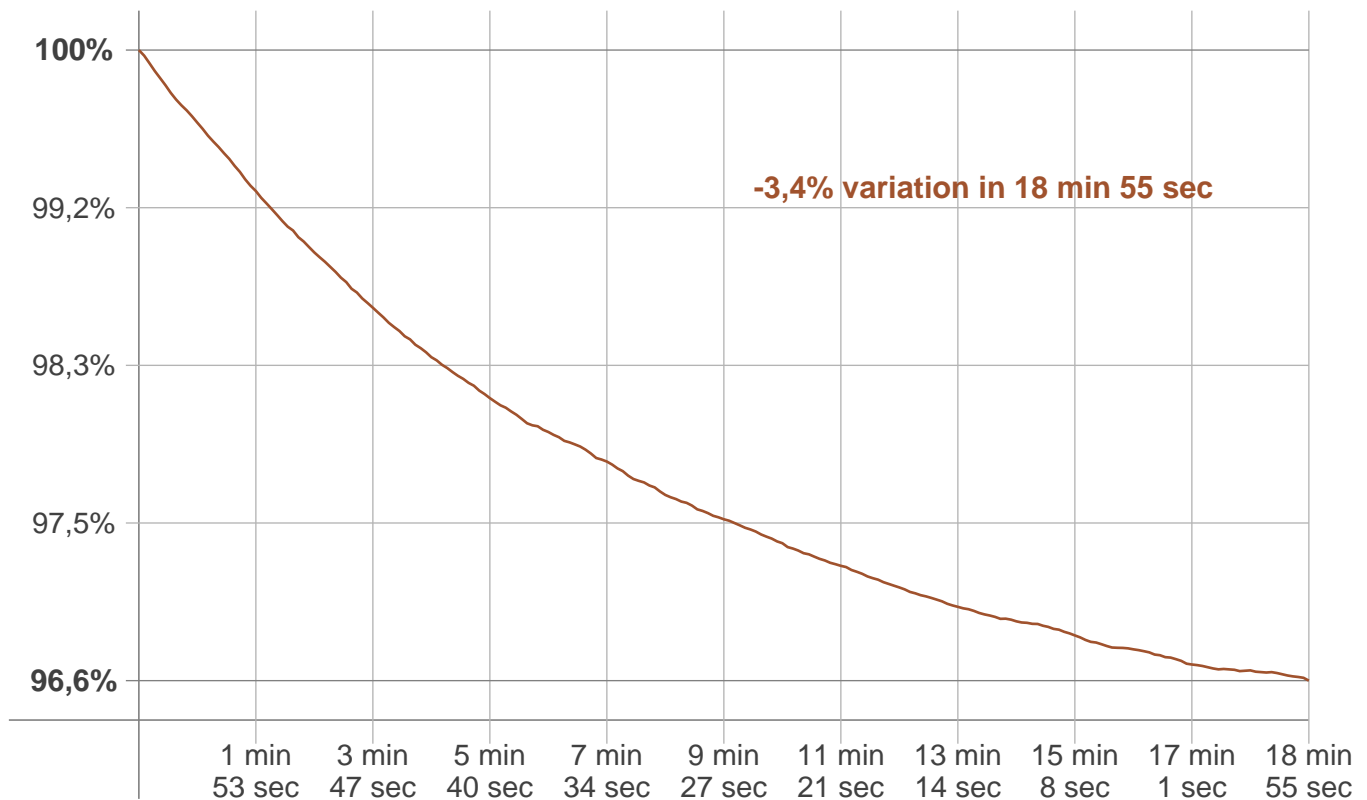


Zonal Lumen Summary

0°-10°	10°-20°	20°-30°	30°-40°	40°-50°	50°-60°	60°-70°	70°-80°	80°-90°
36,6 lm	105 lm	161 lm	196 lm	207 lm	189 lm	145 lm	79,7 lm	16,0 lm
90°-100°	100°-110°	110°-120°	120°-130°	130°-140°	140°-150°	150°-160°	160°-170°	170°-180°
0,078 lm	0,062 lm	0,077 lm	0,086 lm	0,079 lm	0,060 lm	0,042 lm	0,022 lm	0,007 lm

Stabilization

Warmup curve



Warmup result

Warmup time:	18 min 55 sec
Warmup variation	-3,4%

Warmup conditions

Stable period:	15 min
Stable change max:	2,0%
Minimum time:	15 min

Color temperature change

CCT start	CCT change	CCT end
3984 K	+48 K	4032 K

Output change

Output start	Output change	Output end
1173 lm	-38 lm	1136 lm