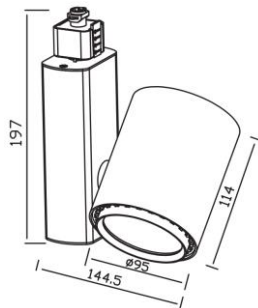




Dimensiones (mm)

Largo: 144,5; **Ancho:** Ø95
Alto: 197.



Código

KTK8582

Descripción

Luminaria tipo spot, diseñada con COB de LED integrado. Compuesta por un óptico especular, un disipador en aluminio y un difusor en acrílico transparente.



Materiales y acabado

Cuerpo y aro en aluminio, porta driver en aluminio con tapa en hierro; todas las piezas con acabado en pintura poliéster electrostática en polvo.

Color

Blanco.

Características técnicas

LED	 39°	 30,000h	IP 20
PF 0,75	THD <15%	°C 0-55	V 110-230

Fuente de luz

COB de LED.

Potencia Nominal	CRI	K	Lm / W	Lm de Salida
26W	>80	3000	98	2679

Características de fuente de luz

- Color temperatura disponible 3000K (cálido).
- Marca LED: CITIZEN. Marca Driver: TRIDONIC.
- Potencia de Salida: 27,3W.

Light efficiency:



Light quality:



Color temperature:



Output: 2679 lm

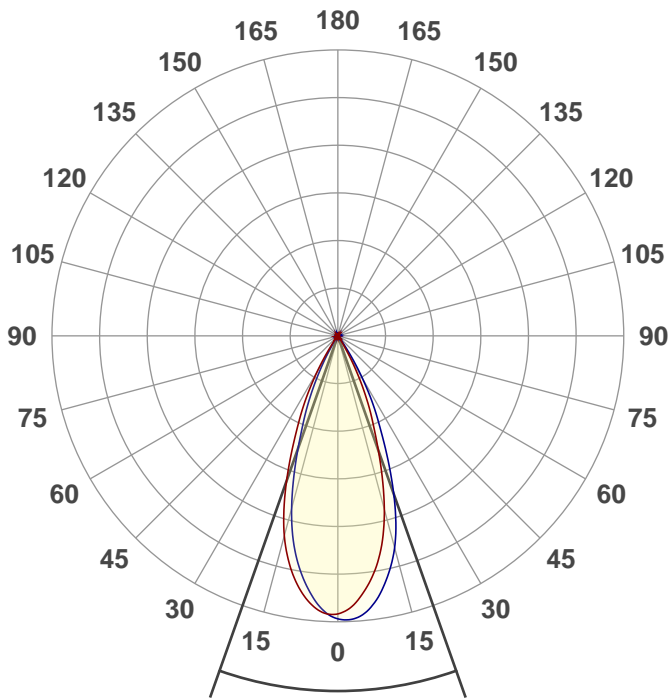
Peak: 6183 cd

Power: 27,3 W

PF: 0,75



Product name:
E0169-KTK8582



Beam angle

38,9°



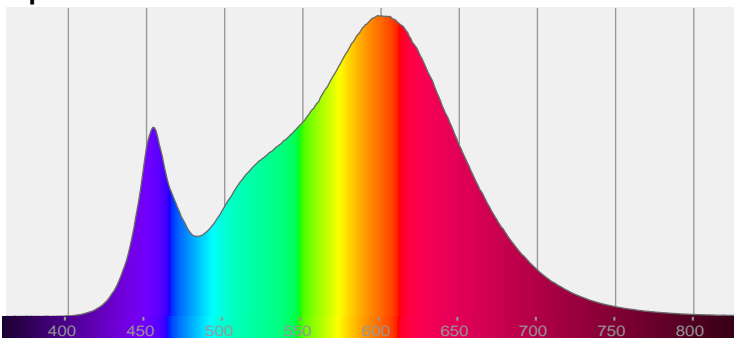
CIE 1931
x: 0,419
y: 0,394

THD Values:

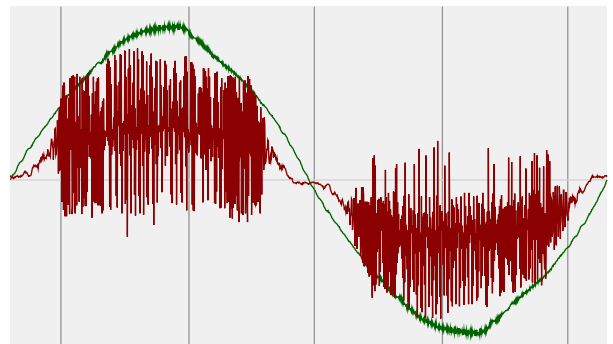
Voltage: 2,5%

Current: 12,77%

Spectra

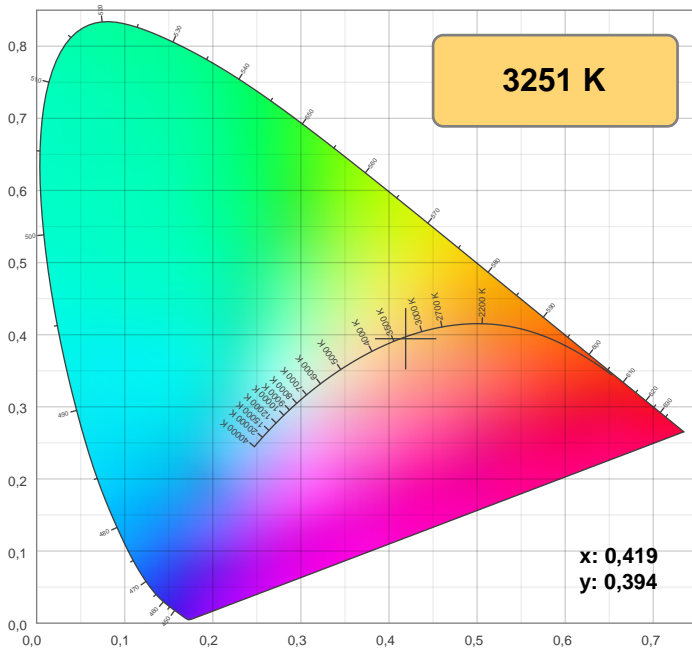


Power



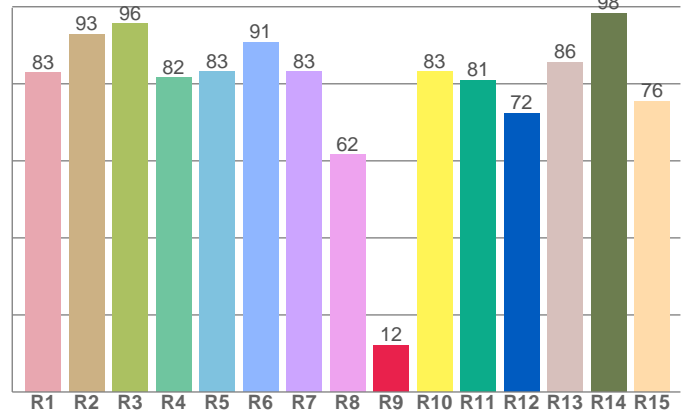
Voltage: 115 V
Current: 0,314 A
Frequency: 60 Hz

Color details



CIE 1931

CRI: 83,9 (R1-R8)

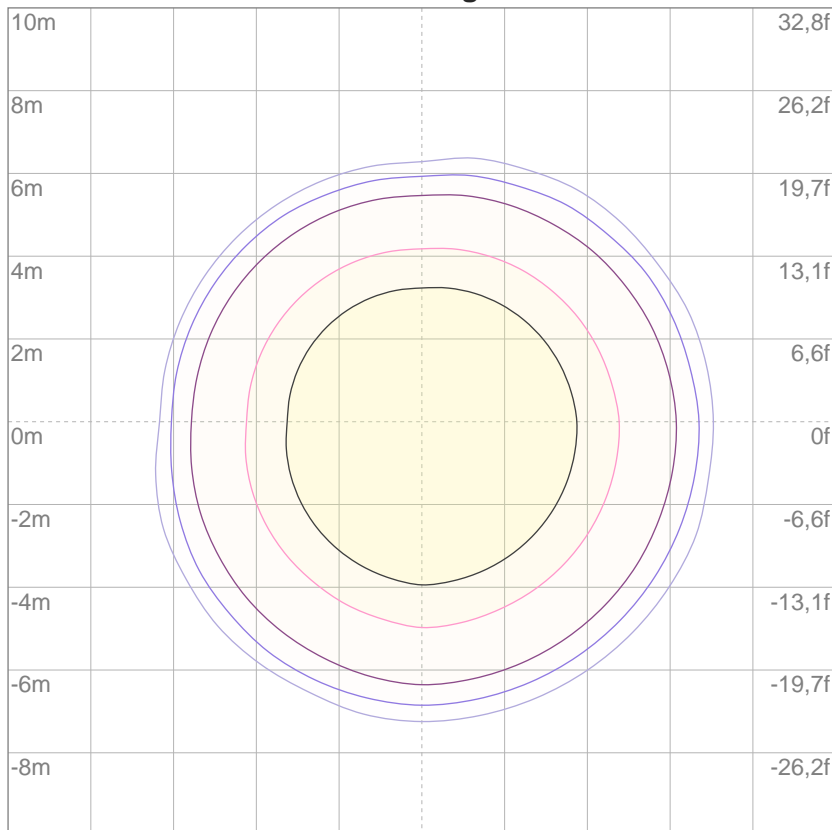


CRI R values, only R1-R8 are used to calculate final CRI value

R1	R2	R3	R4	R5	R6	R7	R8	9	R10	R11	R12	R13	R14	R15
82,9	92,8	95,5	81,5	83,1	90,8	83,2	61,6	12,2	83,1	80,9	72,4	85,6	98,3	75,5

ISO Diagrams

ISO lux diagram



Mounting height: 10 meters (33 f)

3%	1,83 lx
5%	3,05 lx
10%	6,10 lx
30%	18,3 lx
50%	30,5 lx

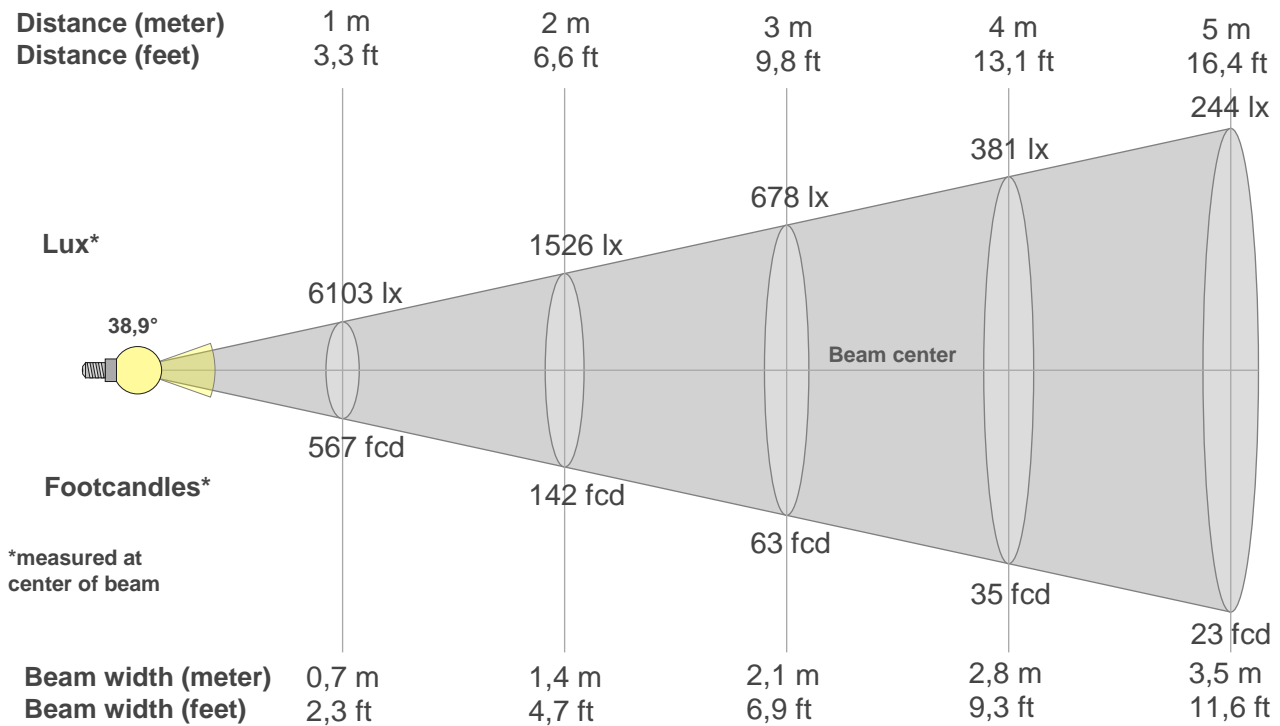
Conditions:

Number of c-planes: 4

Lux at center: 61,0 lx

Lux distribution on a surface when lamp is mounted at 10 meters from the surface.

Beam details



Beam intensities from 1-20m

1m	2m	3m	4m	5m	6m	7m	8m	9m	10m	11m	12m	13m	14m	15m	16m	17m	18m	19m	20m
3,3ft	6,6ft	9,8ft	13,1ft	16,4ft	19,7ft	23ft	26,2ft	29,5ft	32,8ft	36,1ft	39,4ft	42,7ft	45,9ft	49,2ft	52,5ft	55,8ft	59,1ft	62,3ft	65,6ft
6103lx	1526lx	678lx	381lx	244lx	170lx	125lx	95lx	75lx	61lx	50lx	42lx	36lx	31lx	27lx	24lx	21lx	19lx	17lx	15lx
566,9fcd	141,7fcd	63fcd	35,4fcd	22,7fcd	15,7fcd	11,6fcd	8,9fcd	7fcd	5,7fcd	4,7fcd	3,9fcd	3,4fcd	2,9fcd	2,5fcd	2,2fcd	2fcd	1,7fcd	1,6fcd	1,4fcd

Intensities in 0° c-plane

0°	2°	4°	6°	8°	10°	12°	14°	16°	18°	20°	22°	24°	26°	28°	30°	32°	34°	36°	38°
6103	5965	5802	5572	5309	4995	4616	4160	3632	3059	2504	2028	1618	1204	806	469	224	128	86	66
100%	98%	95%	91%	87%	82%	76%	68%	60%	50%	41%	33%	27%	20%	13%	8%	4%	2%	1%	1%

Intensities in 90° c-plane

0°	2°	4°	6°	8°	10°	12°	14°	16°	18°	20°	22°	24°	26°	28°	30°	32°	34°	36°	38°
6103	6181	6141	6027	5840	5590	5294	4960	4555	4057	3494	2913	2368	1921	1502	1077	694	376	190	120
100%	101%	101%	99%	96%	92%	87%	81%	75%	66%	57%	48%	39%	31%	25%	18%	11%	6%	3%	2%

Intensities in 180° c-plane

0°	2°	4°	6°	8°	10°	12°	14°	16°	18°	20°	22°	24°	26°	28°	30°	32°	34°	36°	38°
6103	6056	5985	5840	5637	5380	5071	4708	4272	3755	3198	2642	2146	1724	1304	902	552	289	163	111
100%	99%	98%	96%	92%	88%	83%	77%	70%	62%	52%	43%	35%	28%	21%	15%	9%	5%	3%	2%

Intensities in 270° c-plane

0°	2°	4°	6°	8°	10°	12°	14°	16°	18°	20°	22°	24°	26°	28°	30°	32°	34°	36°	38°
6103	6064	5887	5639	5348	5012	4618	4150	3608	3025	2457	1975	1546	1124	733	407	197	124	86	68
100%	99%	96%	92%	88%	82%	76%	68%	59%	50%	40%	32%	25%	18%	12%	7%	3%	2%	1%	1%

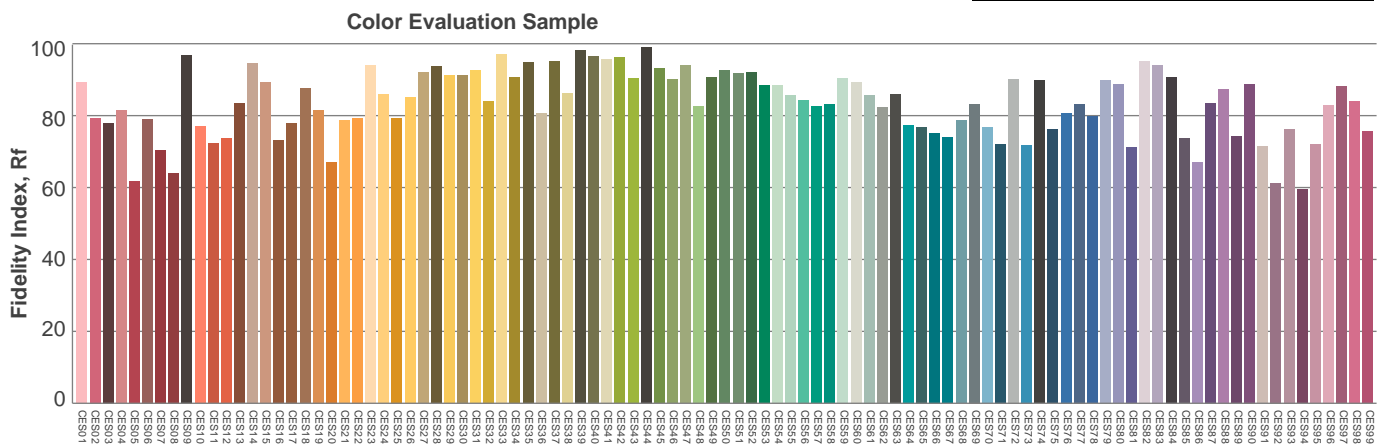
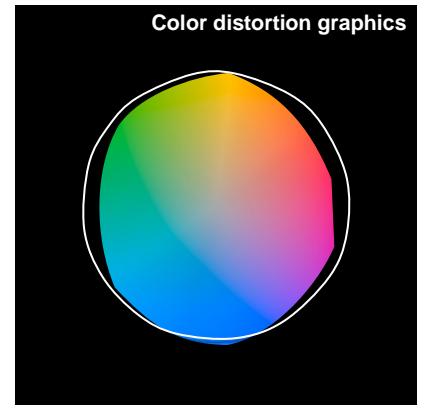
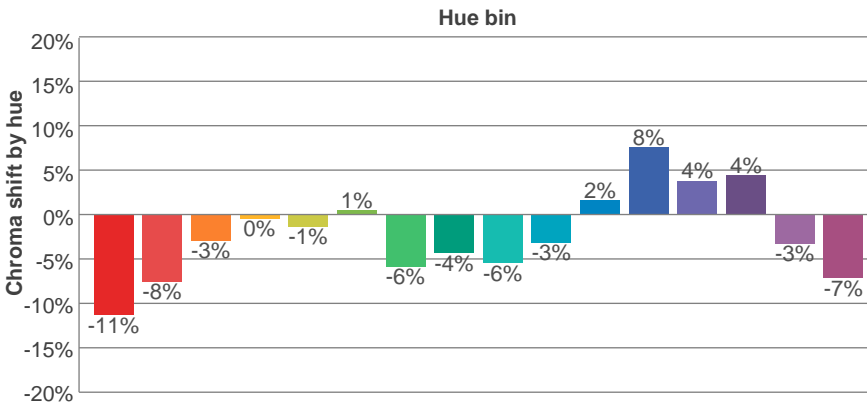
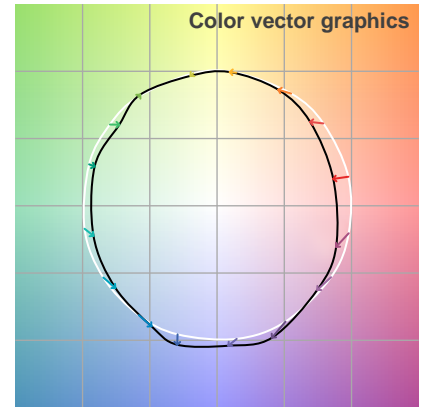
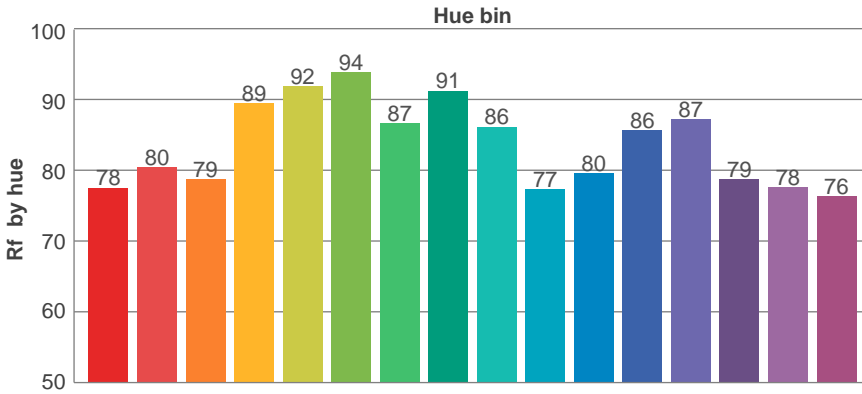
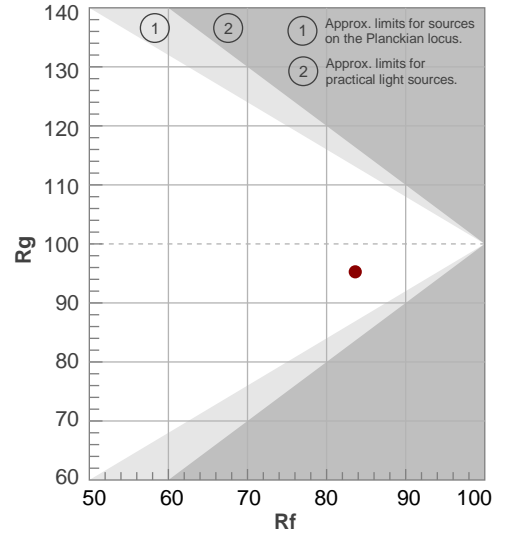
Beam angle 50%	Field angle 10%	Cutoff angle 2,5%	Intensity ratio in 120° cone	Intensity ratio in 90° cone
38,9°	60,9°	69,7°	99,3%	98,3%

TM30 details

Rf 83,6
Fidelity index Rf

Rg 95,3
Gammut index Rg

Hue Bin	R _f	Graphic shifts (%)	
		Chroma	Hue
1	78	-11%	1%
2	80	-8%	6%
3	79	-3%	10%
4	89	0%	5%
5	92	-1%	2%
6	94	1%	-2%
7	87	-6%	-4%
8	91	-4%	1%
9	86	-6%	6%
10	77	-3%	11%
11	80	2%	12%
12	86	8%	1%
13	87	4%	-7%
14	79	4%	-15%
15	78	-3%	-14%
16	76	-7%	-12%



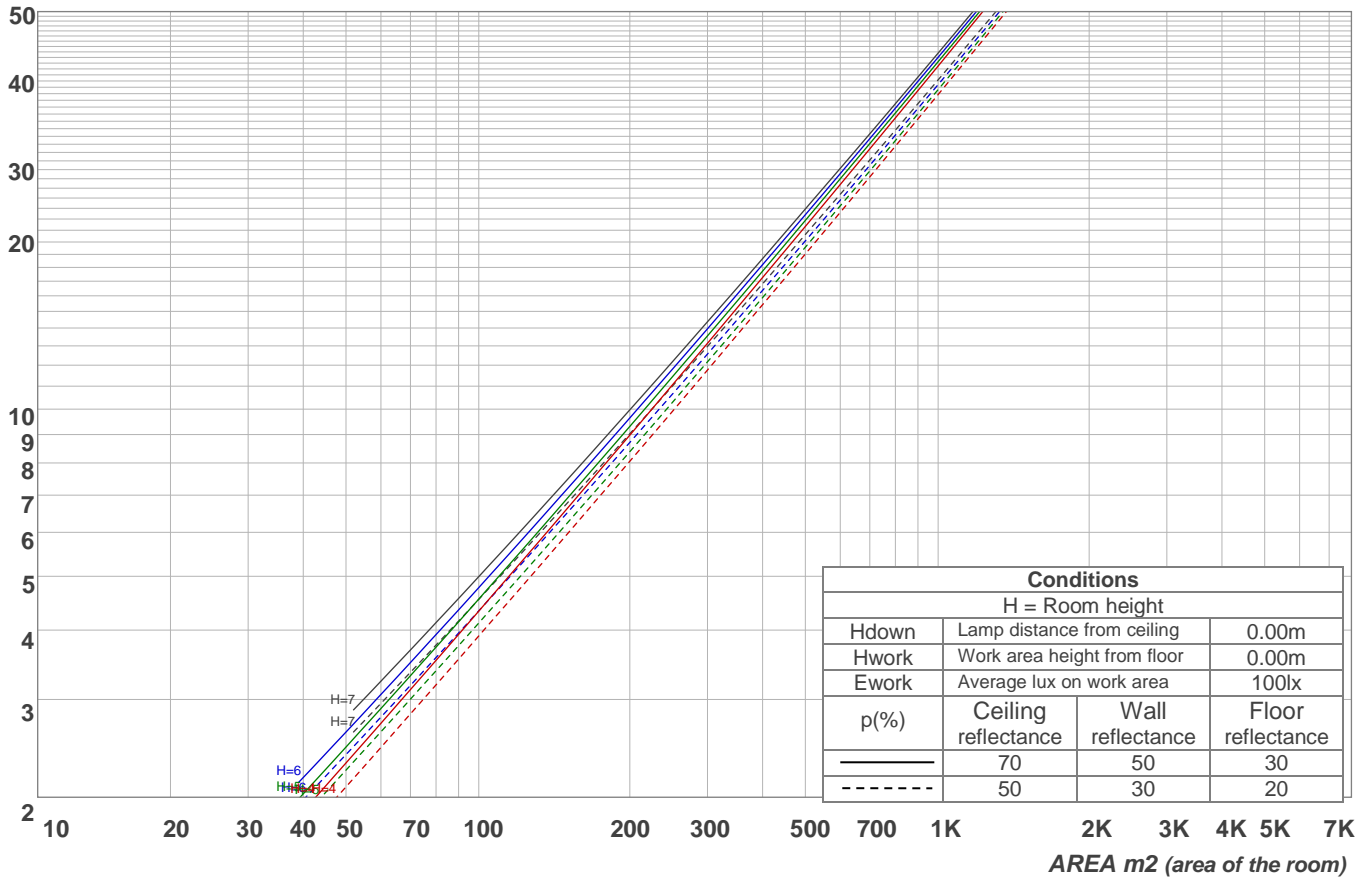
Light planning

Coefficients of Utilization

Ceiling reflectance	80				70				50			30			10			0
Wall reflectance	70	50	30	10	70	50	30	10	50	30	10	50	30	10	50	30	10	0
Floor reflectance	20	20	20	20	20	20	20	20	20	20	20	20	20	20	20	20	20	0
RCR	(RCR: Room Cavity Ratio)																	
	Room Values are expressed as percentage of Lumens delivered to the task surface																	
0	119	119	119	119	116	116	116	116	111	111	111	106	106	106	102	102	102	100
1	114	112	110	108	112	110	108	106	106	104	103	102	101	100	99	98	97	95
2	110	106	102	99	108	104	101	98	101	98	96	98	96	94	95	94	92	91
3	106	100	96	93	104	99	95	92	96	93	91	94	91	89	92	90	88	86
4	102	95	91	87	100	94	90	87	92	89	86	90	87	85	88	86	84	83
5	98	91	86	83	96	90	86	82	88	84	81	87	83	81	85	82	80	79
6	94	87	82	78	93	86	82	78	85	81	78	83	80	77	82	79	77	75
7	91	83	78	75	89	82	78	75	81	77	74	80	77	74	79	76	73	72
8	87	80	75	71	86	79	75	71	78	74	71	77	73	71	76	73	70	69
9	84	77	72	68	83	76	71	68	75	71	68	74	71	68	74	70	68	67
10	81	74	69	66	81	73	69	66	72	68	65	72	68	65	71	68	65	64

LAMPS (number of lamps)

Luminaire budgetary diagram

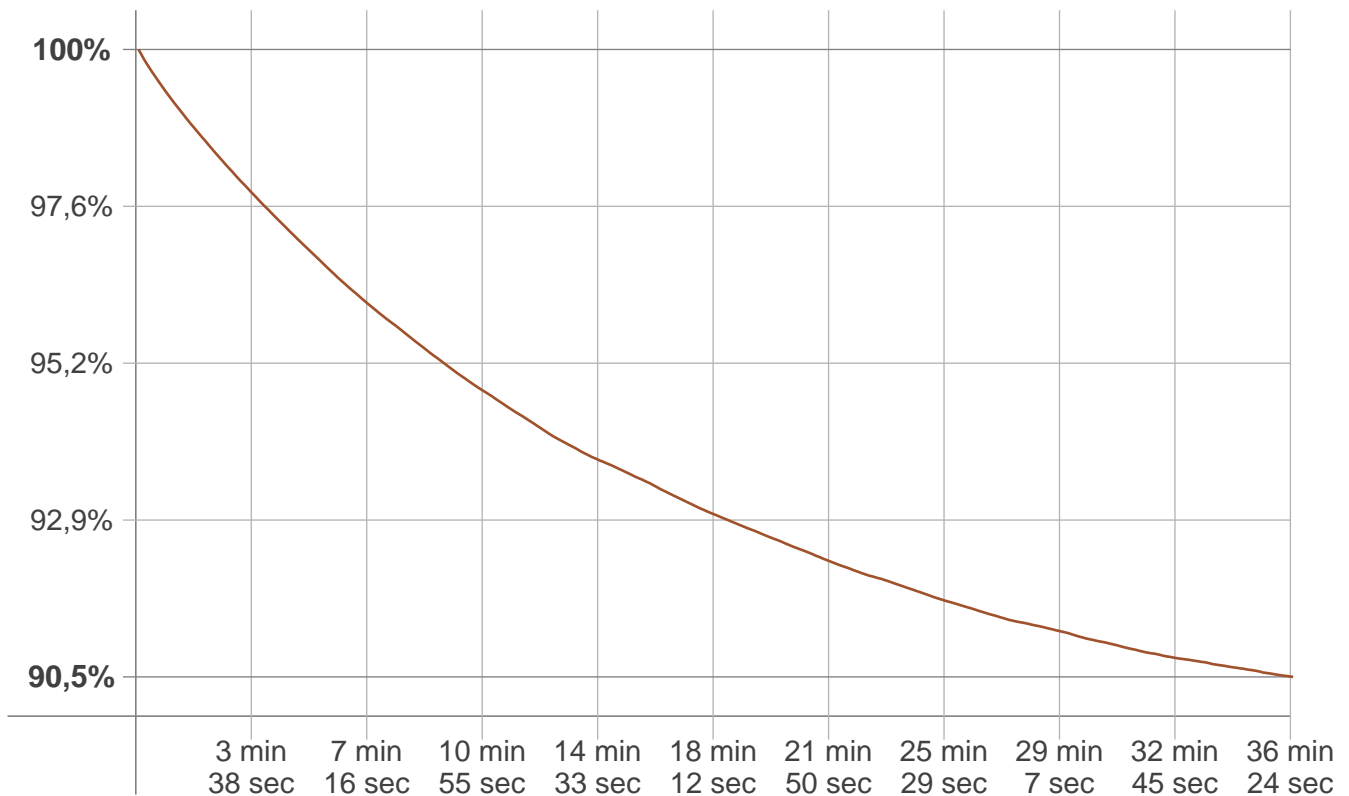


Zonal Lumen Summary

0°-10°	10°-20°	20°-30°	30°-40°	40°-50°	50°-60°	60°-70°	70°-80°	80°-90°
540 lm	1153 lm	772 lm	147 lm	33,5 lm	15,1 lm	8,49 lm	5,26 lm	1,84 lm
90°-100°	100°-110°	110°-120°	120°-130°	130°-140°	140°-150°	150°-160°	160°-170°	170°-180°
0,275 lm	0,274 lm	0,248 lm	0,227 lm	0,237 lm	0,321 lm	0,385 lm	0,254 lm	0,047 lm

Stabilization

Warmup curve



Warmup result

Warmup time:	36 min 29 sec
Warmup variation	-9,6%

Warmup conditions

Stable period:	15 min
Stable change max:	2,0%
Minimum time:	15 min

Color temperature change

CCT start	CCT change	CCT end
3224 K	+27 K	3251 K

Output change

Output start	Output change	Output end
2950 lm	-271 lm	2679 lm