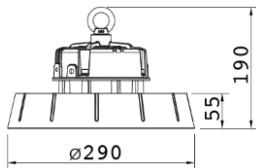




Dimensiones (mm)

Diámetro: Ø290; Alto: 190.



Código

MESSINA-100W

Descripción

Luminaria tipo Highbay, diseñada con módulo de LED integrado. Para descolgar en cielo. Compuesta por un difusor en policarbonato y un disipador en aluminio inyectado.



Materiales y acabado

Luminaria fabricada en aluminio inyectado, con acabado en pintura poliéster electrostática en polvo.

Color

Negro Semi mate.

Características técnicas

LED	 117°	 50,000h	IP 65	IK 06
PF 0,99	THD <10%	°C -40-55	V 100-277	Dim 1-10V

Fuente de luz

Módulo de LED integrado.

Potencia Nominal	CRI	K	Lm / W	Lm de Salida
100W	>80	5000	147	14890

Características de fuente de luz

- Color temperatura disponible 5000K (luz día).
- Protección 4KV contra sobretensiones.
- Potencia de Salida: 102W.

Light efficiency:



Light quality:



Color temperature:



Output: 14890 lm

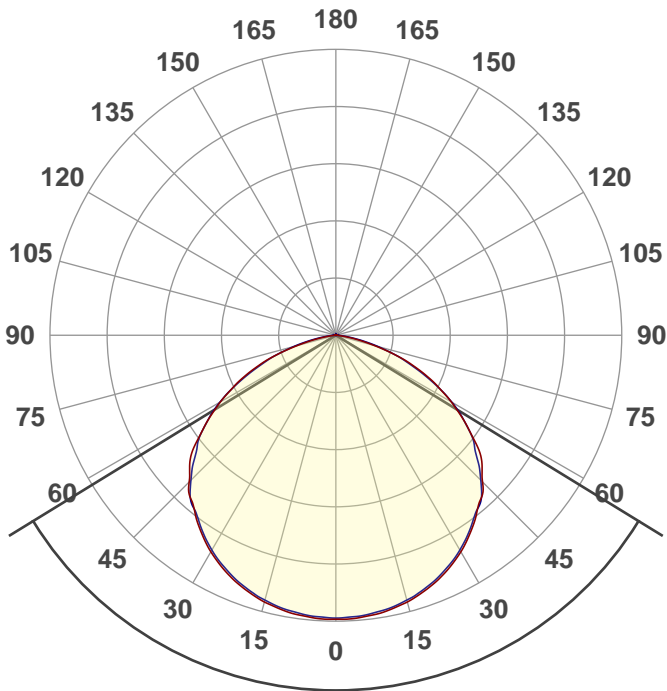
Peak: 5093 cd

Power: 101,6 W

PF: 0,99



Product name:
E0495-MESSINA-100W



Beam angle **116,9°**



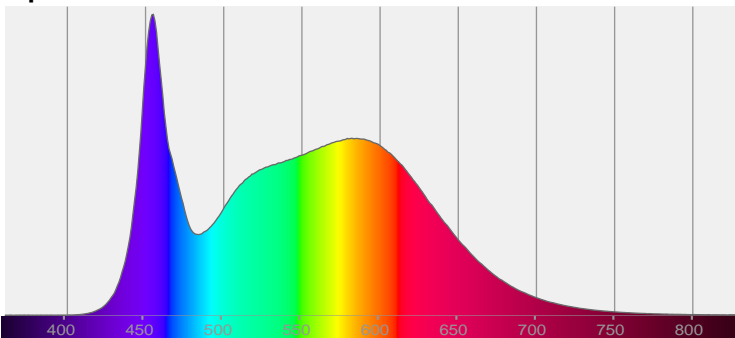
CIE 1931
x: 0,343
y: 0,356

THD Values:

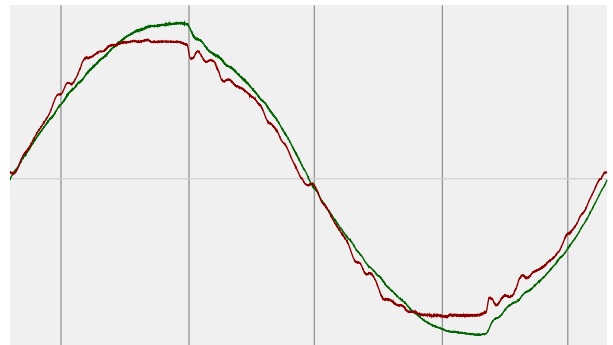
Voltage: 2,88%

Current: 5,44%

Spectra



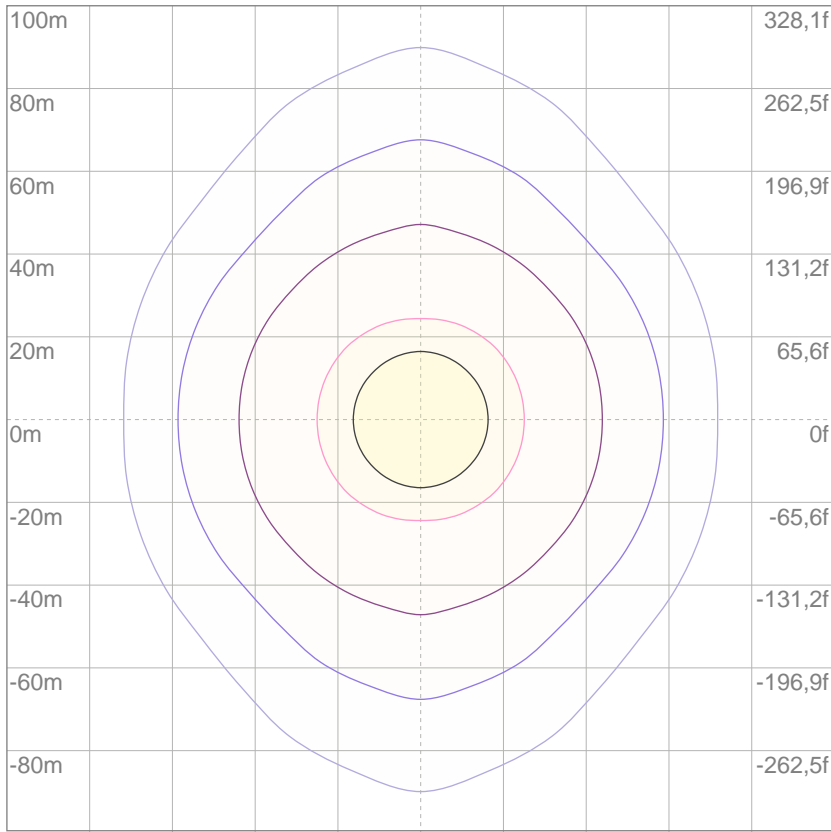
Power



Voltage: 113 V
Current: 0,900 A
Frequency: 60 Hz

ISO Diagrams

ISO lux diagram



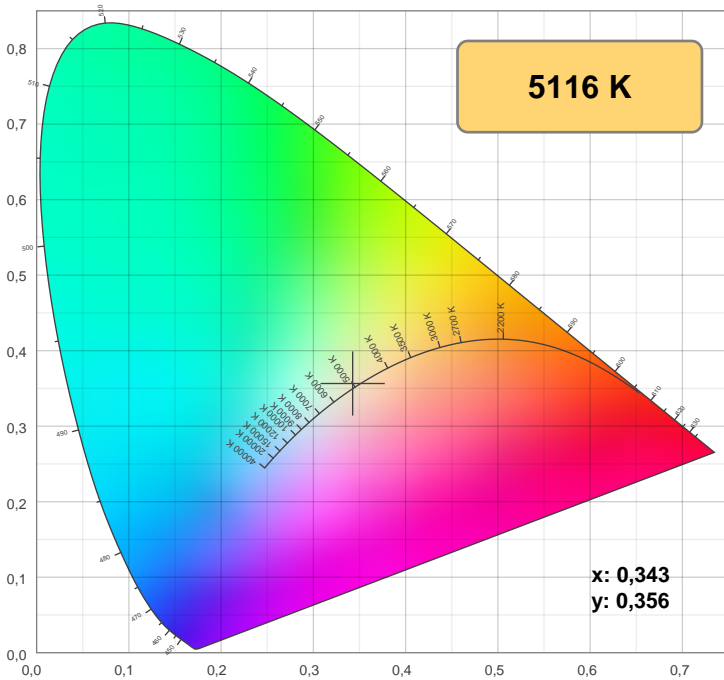
3%	1,53 lx
5%	2,54 lx
10%	5,08 lx
30%	15,3 lx
50%	25,4 lx

Conditions:
 Number of c-planes: 8
 Lux at center: 50,8 lx

Lux distribution on a surface when lamp is mounted at 10 meters from the surface.

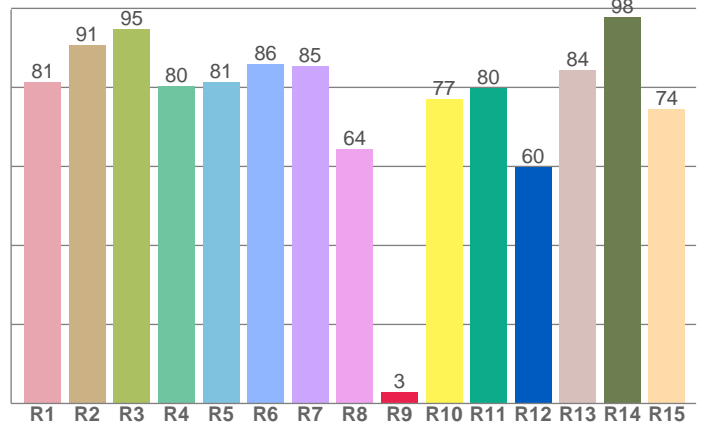
Mounting height: 10 meters (33 f)

Color details



CIE 1931

CRI: 83,0 (R1-R8)



CRI R values, only R1-R8 are used to calculate final CRI value

R1	R2	R3	R4	R5	R6	R7	R8	R9	R10	R11	R12	R13	R14	R15
81,3	90,7	94,8	80,5	81,3	85,9	85,4	64,4	2,8	77,2	79,8	59,8	84,3	97,7	74,5

Color parameters

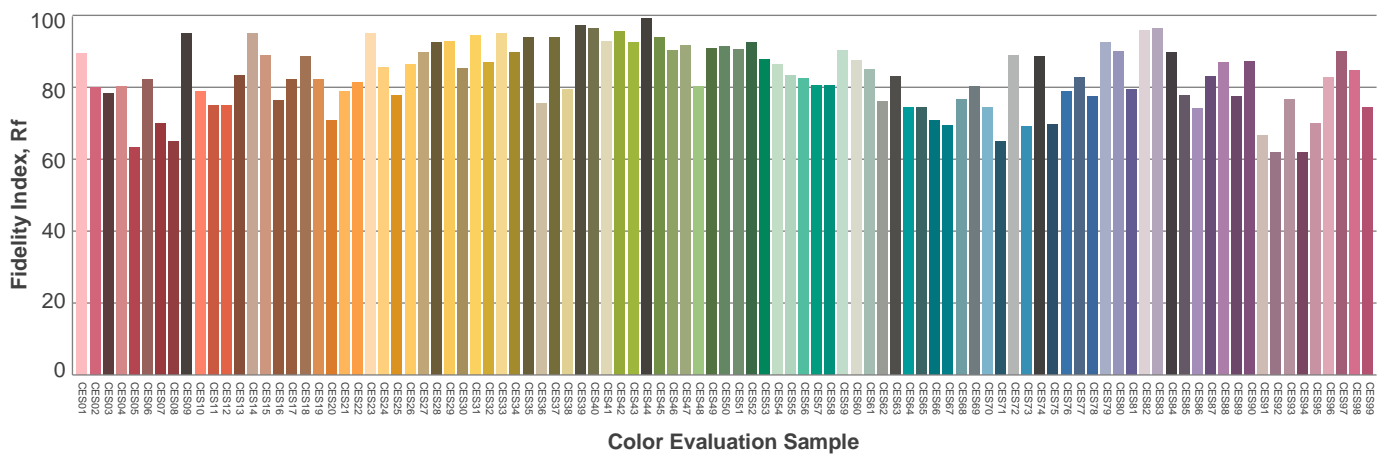
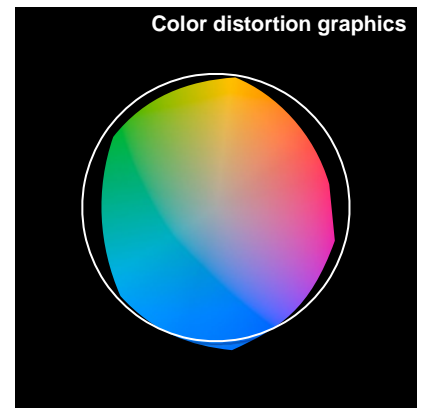
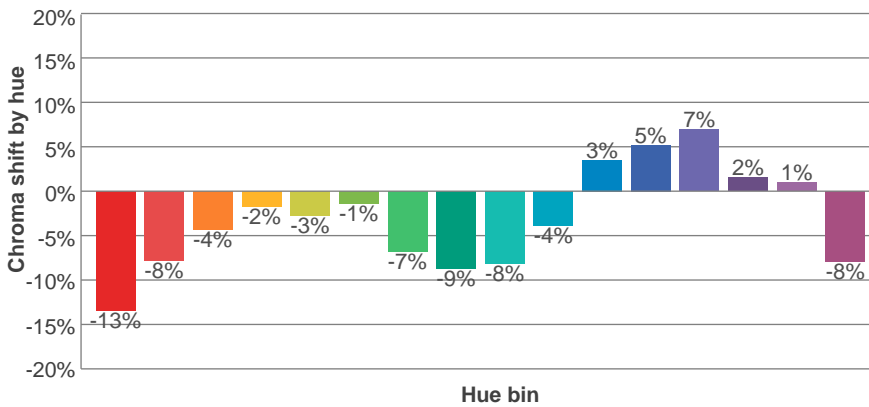
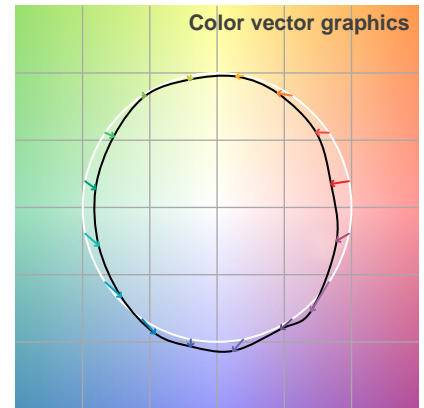
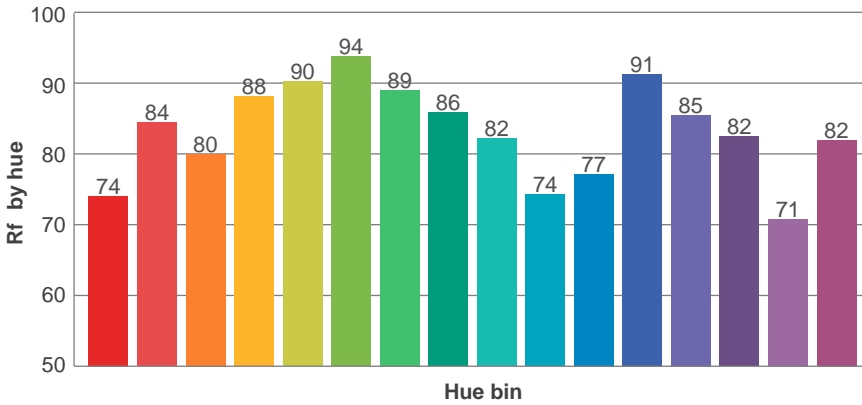
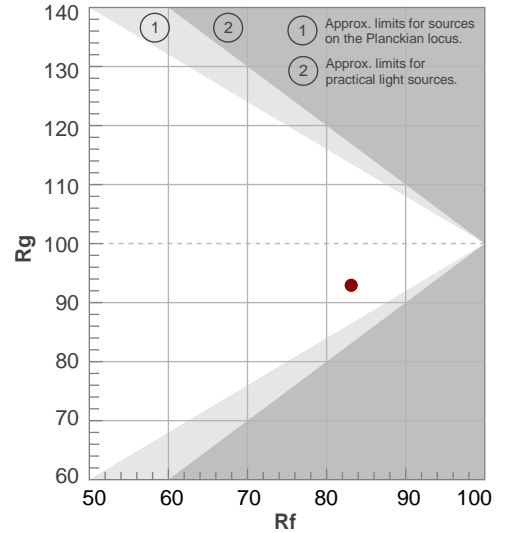
Color temperature	Color rendering index	Red component	Color fidelity	Color gamut	Color quality scale	Color coordinate cie 1931	Color coordinate cie 1931	Color coordinate	Color coordinate	Color deviation from black body
CCT	CRI	CRI R9	TM30 Rf	TM30 Rg	CQS	x	y	u	v	Δuv
5116 K	83,0	2,8	83,1	92,9	80,6	0,343	0,356	0,208	0,324	0,0002

TM-30 details

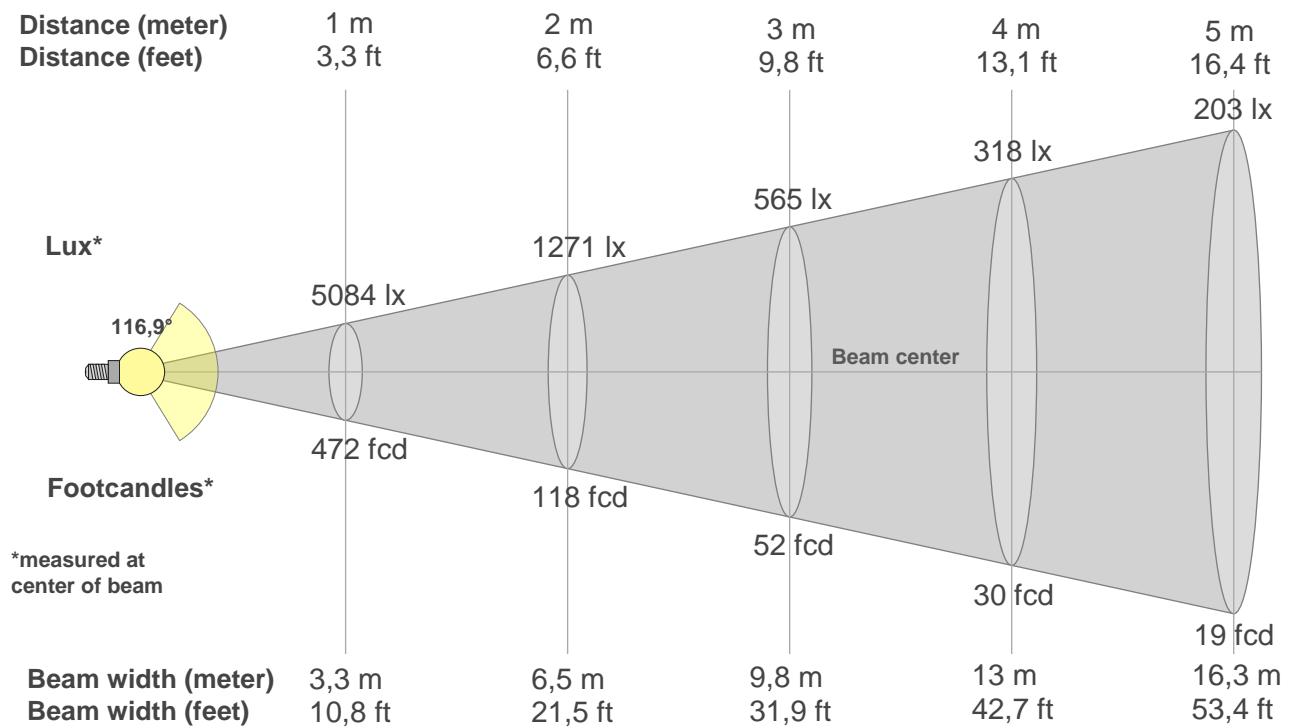
Rf 83,1
Fidelity index Rf

Rg 92,9
Gamut index Rg

Hue Bin	R _f	Shifts (%)	
		Chroma	Hue
1	74	-13%	1%
2	84	-8%	6%
3	80	-4%	10%
4	88	-2%	5%
5	90	-3%	2%
6	94	-1%	-2%
7	89	-7%	-1%
8	86	-9%	4%
9	82	-8%	11%
10	74	-4%	15%
11	77	3%	14%
12	91	5%	1%
13	85	7%	-9%
14	82	2%	-11%
15	71	1%	-25%
16	82	-8%	-7%



Beam details



Beam intensities from 1-20m

1m	2m	3m	4m	5m	6m	7m	8m	9m	10m	11m	12m	13m	14m	15m	16m	17m	18m	19m	20m
3,3ft	6,6ft	9,8ft	13,1ft	16,4ft	19,7ft	23ft	26,2ft	29,5ft	32,8ft	36,1ft	39,4ft	42,7ft	45,9ft	49,2ft	52,5ft	55,8ft	59,1ft	62,3ft	65,6ft
5084lx	1271lx	565lx	318lx	203lx	141lx	104lx	79lx	63lx	51lx	42lx	35lx	30lx	26lx	23lx	20lx	18lx	16lx	14lx	13lx
472,3fcd	118,1fcd	52,5fcd	29,5fcd	18,9fcd	13,1fcd	9,6fcd	7,4fcd	5,8fcd	4,7fcd	3,9fcd	3,3fcd	2,8fcd	2,4fcd	2,1fcd	1,8fcd	1,6fcd	1,5fcd	1,3fcd	1,2fcd

Intensities in 0° c-plane

0°	5°	10°	15°	20°	25°	30°	35°	40°	45°	50°	55°	60°	65°	70°	75°	80°	85°	90°	95°
5084	5078	5033	4950	4828	4674	4482	4245	3978	3719	3396	2891	2390	1879	1335	723	278	60	4	2
100%	100%	99%	97%	95%	92%	88%	84%	78%	73%	67%	57%	47%	37%	26%	14%	5%	1%	0%	0%

Intensities in 90° c-plane

0°	5°	10°	15°	20°	25°	30°	35°	40°	45°	50°	55°	60°	65°	70°	75°	80°	85°	90°	95°
5084	5051	5000	4914	4794	4636	4445	4211	3994	3675	3272	2885	2400	1832	1297	781	356	109	12	2
100%	99%	98%	97%	94%	91%	87%	83%	79%	72%	64%	57%	47%	36%	26%	15%	7%	2%	0%	0%

Intensities in 180° c-plane

0°	5°	10°	15°	20°	25°	30°	35°	40°	45°	50°	55°	60°	65°	70°	75°	80°	85°	90°	95°
5084	5078	5033	4950	4828	4674	4482	4245	3978	3719	3396	2891	2390	1879	1335	723	278	60	4	2
100%	100%	99%	97%	95%	92%	88%	84%	78%	73%	67%	57%	47%	37%	26%	14%	5%	1%	0%	0%

Intensities in 270° c-plane

0°	5°	10°	15°	20°	25°	30°	35°	40°	45°	50°	55°	60°	65°	70°	75°	80°	85°	90°	95°
5084	5051	5000	4914	4794	4636	4445	4211	3994	3675	3272	2885	2400	1832	1297	781	356	109	12	2
100%	99%	98%	97%	94%	91%	87%	83%	79%	72%	64%	57%	47%	36%	26%	15%	7%	2%	0%	0%

Beam angle 50%	Field angle 10%	Cutoff angle 2,5%	Intensity ratio in 120° cone	Intensity ratio in 90° cone
116,9°	154,8°	166,6°	81,3%	54,4%

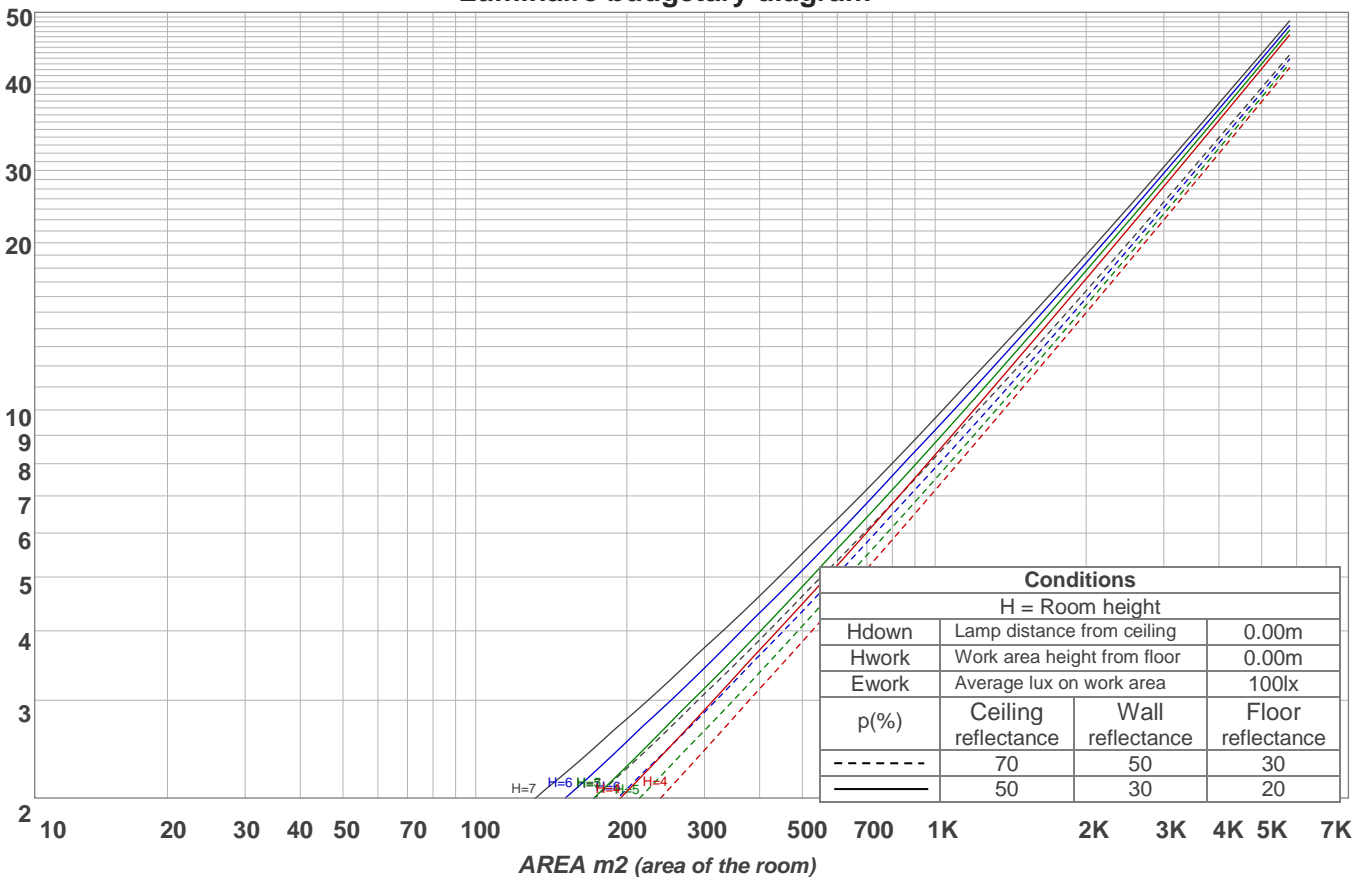
Light planning

Coefficients of Utilization

Ceiling reflectance	80				70				50			30			10			0			
Wall reflectance	70	50	30	10	70	50	30	10	50	30	10	50	30	10	50	30	10	0			
Floor reflectance	20	20	20	20	20	20	20	20	20	20	20	20	20	20	20	20	20	20	20	20	0
RCR	(RCR: Room Cavity Ratio)																				
	Room Values are expressed as percentage of Lumens delivered to the task surface																				
0	119	119	119	119	116	116	116	116	111	111	111	106	106	106	102	102	102	100			
1	109	105	101	97	107	102	99	95	98	95	92	94	92	90	91	89	87	85			
2	100	92	85	79	97	90	84	78	86	81	76	83	78	75	80	76	73	71			
3	91	80	72	66	88	79	71	65	76	69	64	73	68	63	70	66	62	60			
4	83	71	62	56	81	70	62	55	67	60	55	65	59	54	63	57	53	51			
5	76	63	54	48	74	62	54	48	60	53	47	58	52	46	56	51	46	44			
6	70	57	48	42	68	56	48	41	54	47	41	52	46	41	51	45	40	38			
7	65	52	43	37	63	51	42	37	49	42	36	48	41	36	46	40	36	34			
8	61	47	38	33	59	46	38	32	45	38	32	44	37	32	42	36	32	30			
9	56	43	35	29	55	42	35	29	41	34	29	40	34	29	39	33	29	27			
10	53	40	32	26	52	39	32	26	38	31	26	37	31	26	36	30	26	24			

LAMPS (number of lamps)

Luminaire budgetary diagram



Zonal Lumen Summary

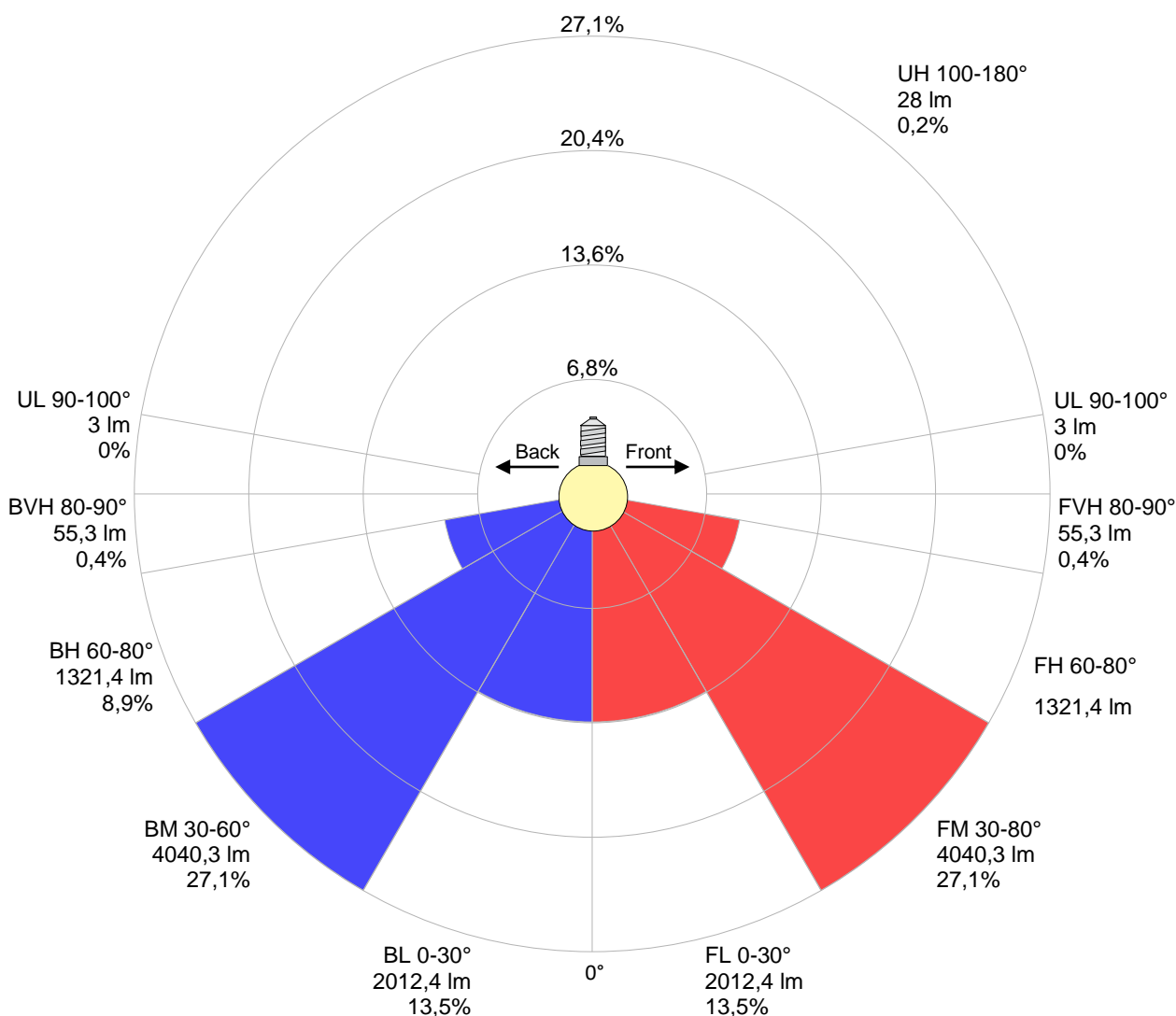
0°-10°	10°-20°	20°-30°	30°-40°	40°-50°	50°-60°	60°-70°	70°-80°	80°-90°
482 lm	1394 lm	2149 lm	2651 lm	2854 lm	2577 lm	1837 lm	805 lm	109 lm
90°-100°	100°-110°	110°-120°	120°-130°	130°-140°	140°-150°	150°-160°	160°-170°	170°-180°
2,90 lm	3,69 lm	5,04 lm	4,98 lm	4,40 lm	3,92 lm	3,16 lm	2,09 lm	0,743 lm

Road report

LCS table

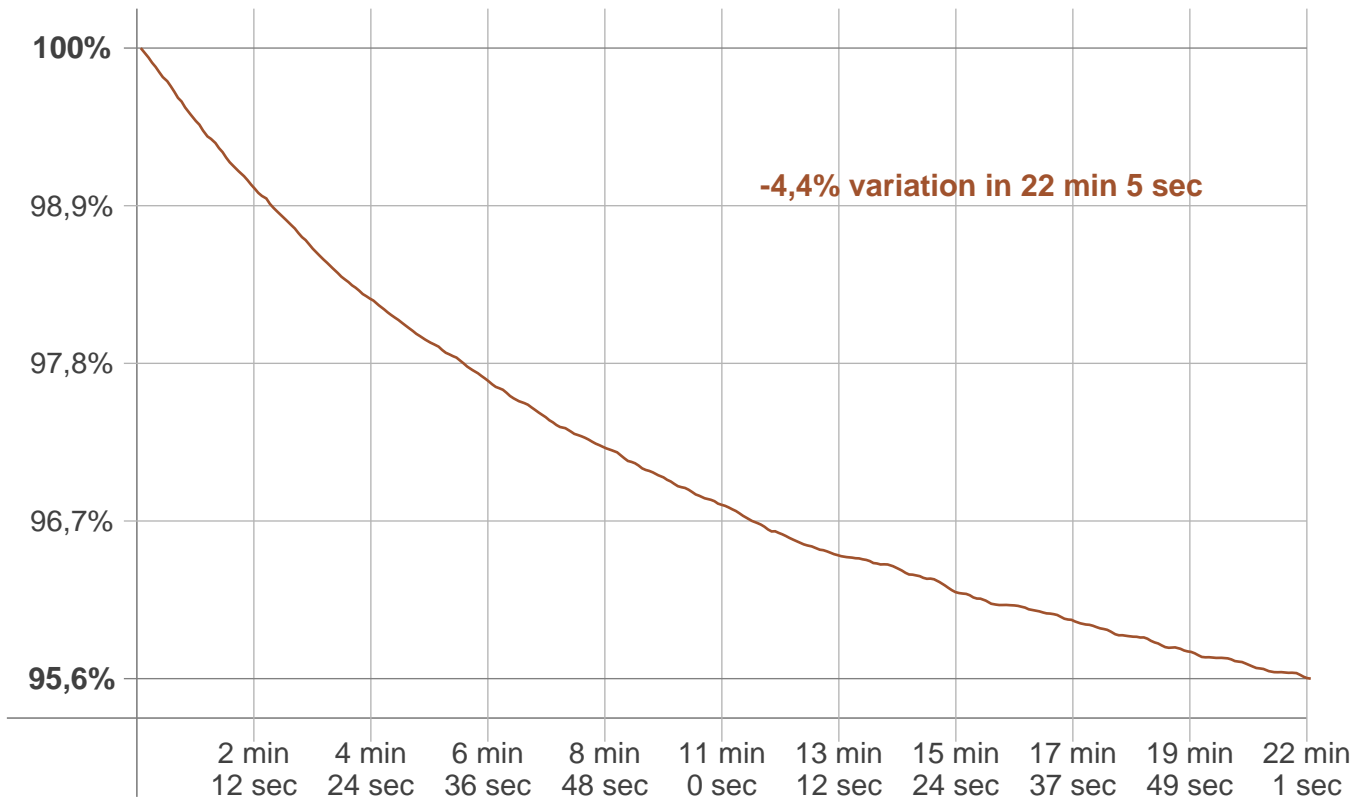
BUG rating:	B3 U2 G1	
Forward light	Lumens	Lumens %
Low(0-30):	2012,4	13,5%
Medium(30-60):	4040,3	27,1%
High(60-80):	1321,4	8,9%
Very high(80-90):	55,3	0,4%
Back light		
Low(0-30):	2012,4	13,5%
Medium(30-60):	4040,3	27,1%
High(60-80):	1321,4	8,9%
Very high(80-90):	55,3	0,4%
Uplight		
Low(90-100):	3	0%
High(100-180):	28	0,2%

LCS graph



Stabilization

Warmup curve



Warmup result

Warmup time:	22 min 5 sec
Warmup variation	-4,4%

Warmup conditions

Stable period:	15 min
Stable change max:	2,0%
Minimum time:	15 min

Color temperature change

CCT start	CCT change	CCT end
5034 K	+82 K	5116 K

Output change

Output start	Output change	Output end
15557 lm	-667 lm	14890 lm