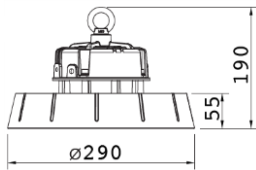




Dimensiones (mm)

Diámetro: Ø290; Alto: 190.



Código

MESSINA-150W

Descripción

Luminaria tipo Highbay, diseñada con módulo de LED integrado. Para descolgar en cielo. Compuesta por un difusor en policarbonato y un disipador en aluminio inyectado.



Materiales y acabado

Luminaria fabricada en aluminio inyectado, con acabado en pintura poliéster electrostática en polvo.

Color

Negro Semi mate.

Características técnicas

LED	 117°	 50,000h	IP 65	IK 06
PF 0,99	THD <15%	°C -40-55	V 100-277	Dim 1-10V

Fuente de luz

Módulo de LED integrado.

Potencia Nominal	CRI	K	Lm / W	Lm de Salida
150W	>80	5000	126	19068

Características de fuente de luz

- Color temperatura disponible 5000K (luz día).
- Protección 4KV contra sobretensiones.
- Potencia de Salida: 151W.

Nota: Debido a continua investigación, nos reservamos el derecho de cambiar especificaciones sin previa notificación.



Light efficiency:



Light quality:



Color temperature:



Output: 19068 lm

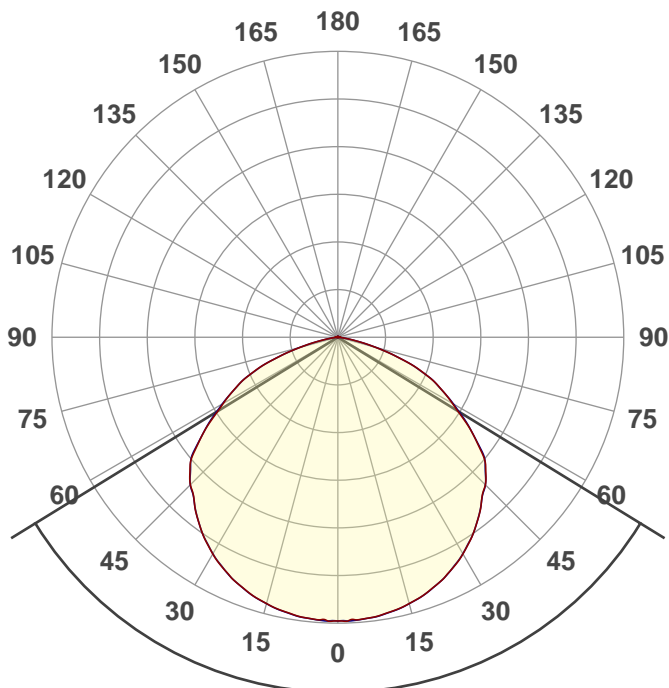
Peak: 6510 cd

Power: 151 W

PF: 0,99



Product name:
E0438-MESSINA-150W



Beam angle **116,8°**



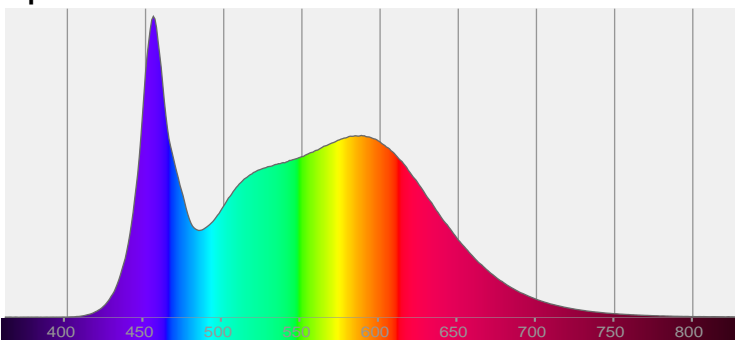
CIE 1931
x: 0,343
y: 0,354

THD Values:

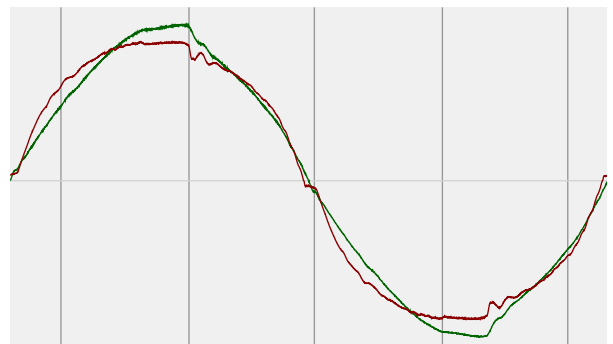
Voltage: 3,1%

Current: 10,13%

Spectra



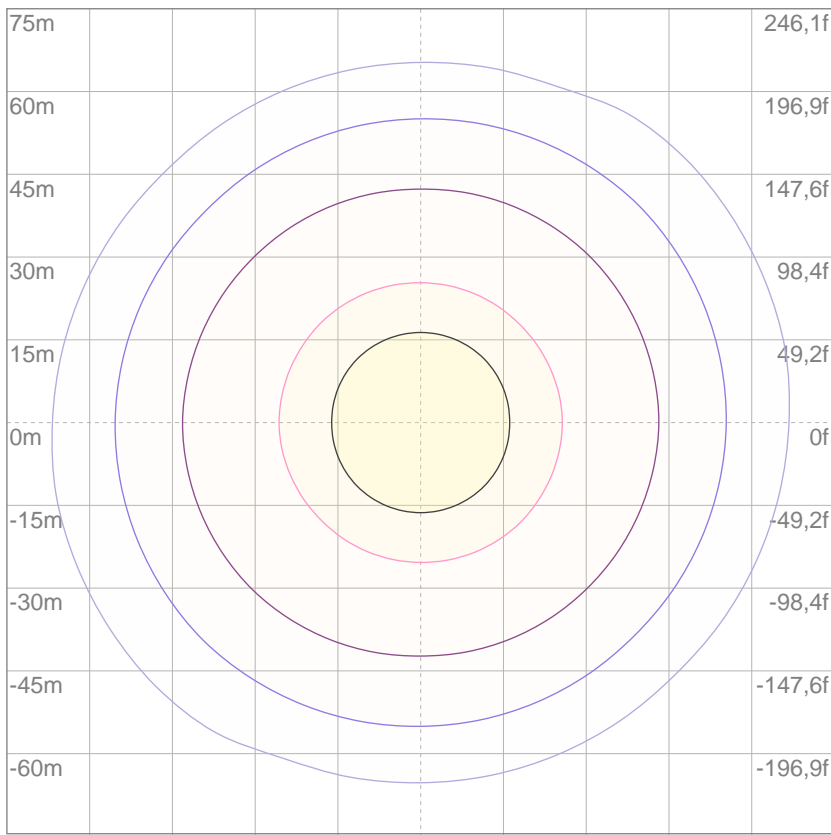
Power



Voltage: 114 V
Current: 1,33 A
Frequency: 60 Hz

ISO Diagrams

ISO lux diagram



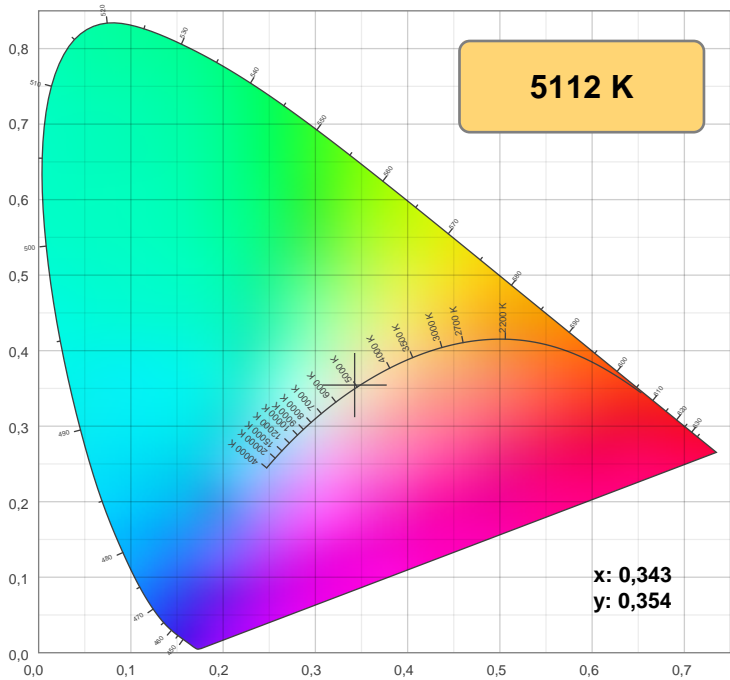
3%	1,95 lx
5%	3,25 lx
10%	6,50 lx
30%	19,5 lx
50%	32,5 lx

Conditions:
 Number of c-planes: 8
 Lux at center: 65,0 lx

Lux distribution on a surface when lamp is mounted at 10 meters from the surface.

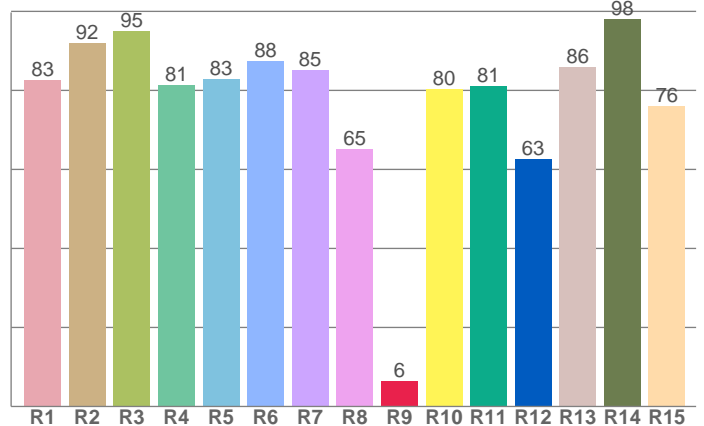
Mounting height: 10 meters (33 f)

Color details



CIE 1931

CRI: 84,0 (R1-R8)



CRI R values, only R1-R8 are used to calculate final CRI value

R1	R2	R3	R4	R5	R6	R7	R8	R9	R10	R11	R12	R13	R14	R15
82,7	92,1	95,0	81,4	82,8	87,5	85,2	65,2	6,3	80,3	81,2	62,6	85,9	97,9	76,0

Color parameters

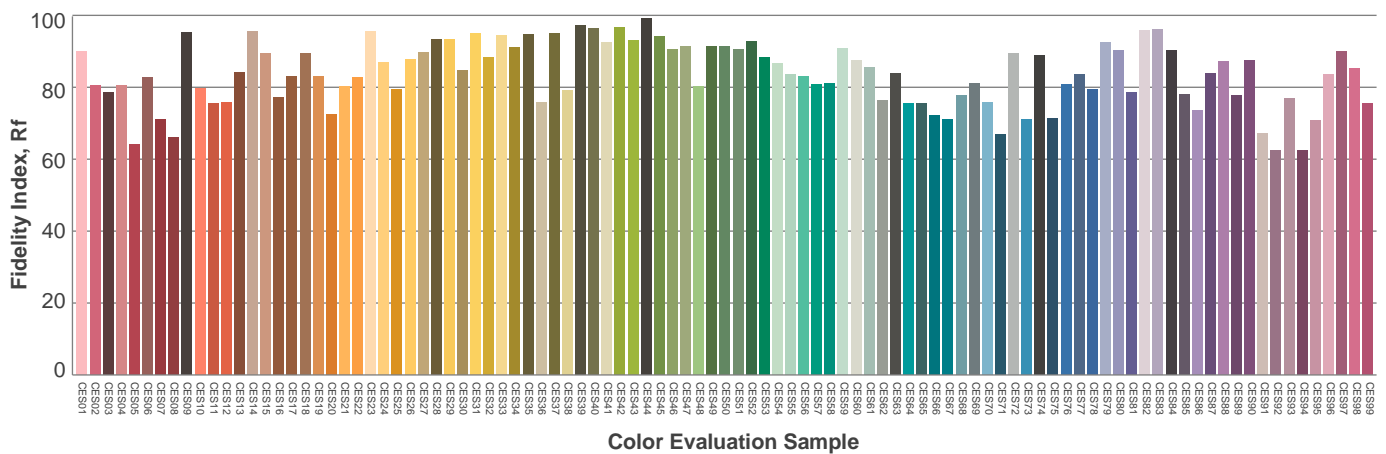
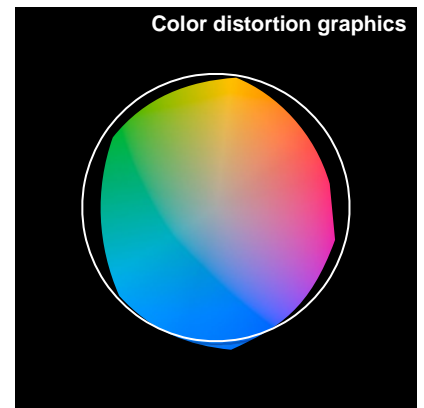
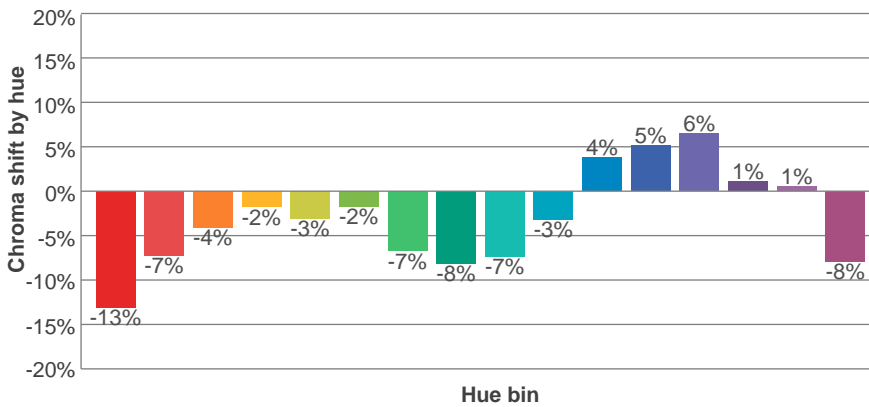
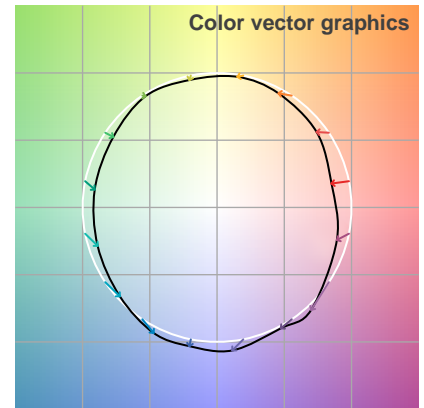
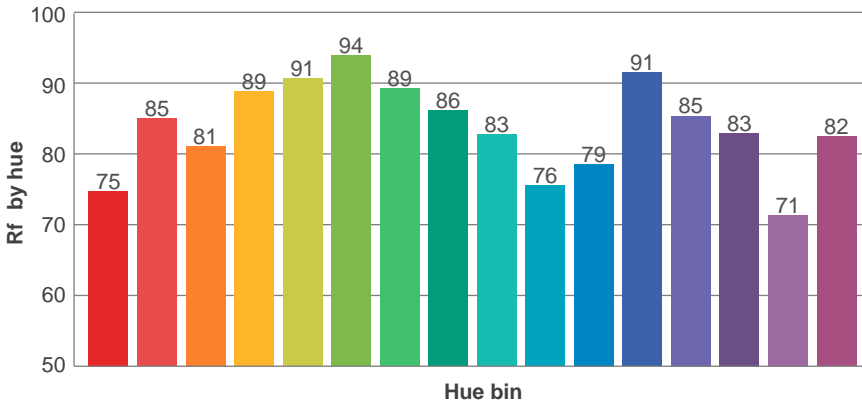
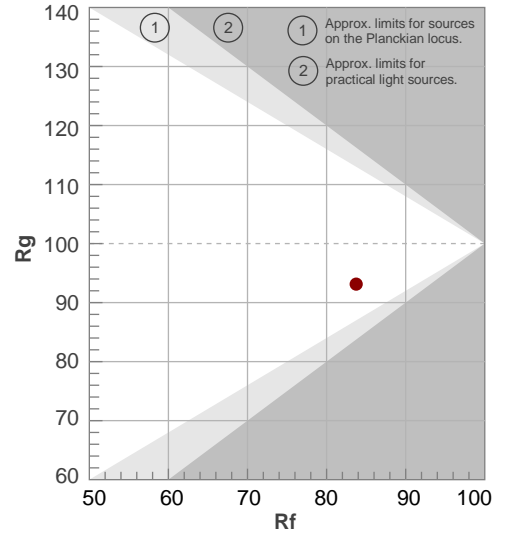
Color temperature	Color rendering index	Red component	Color fidelity	Color gamut	Color quality scale	Color coordinate cie 1931	Color coordinate cie 1931	Color coordinate	Color coordinate	Color deviation from black body
CCT	CRI	CRI R9	TM30 Rf	TM30 Rg	CQS	x	y	u	v	Δuv
5112 K	84,0	6,3	83,7	93,1	81,3	0,343	0,354	0,209	0,324	0,0008

TM-30 details

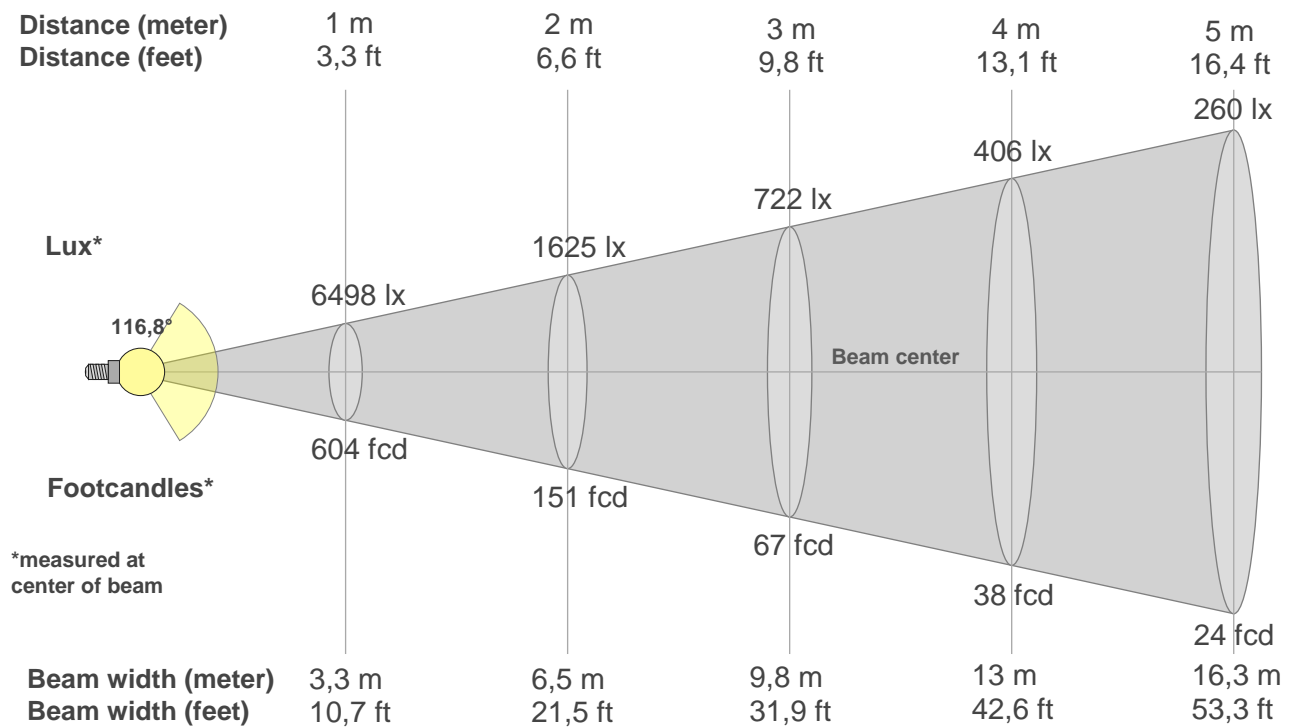
Rf 83,7
Fidelity index Rf

Rg 93,1
Gamut index Rg

Hue Bin	R _f	Shifts (%)	
		Chroma	Hue
1	75	-13%	1%
2	85	-7%	5%
3	81	-4%	9%
4	89	-2%	4%
5	91	-3%	2%
6	94	-2%	-2%
7	89	-7%	-1%
8	86	-8%	5%
9	83	-7%	11%
10	76	-3%	15%
11	79	4%	13%
12	91	5%	0%
13	85	6%	-10%
14	83	1%	-10%
15	71	1%	-24%
16	82	-8%	-6%



Beam details



Beam intensities from 1-20m

1m	2m	3m	4m	5m	6m	7m	8m	9m	10m	11m	12m	13m	14m	15m	16m	17m	18m	19m	20m
3,3ft	6,6ft	9,8ft	13,1ft	16,4ft	19,7ft	23ft	26,2ft	29,5ft	32,8ft	36,1ft	39,4ft	42,7ft	45,9ft	49,2ft	52,5ft	55,8ft	59,1ft	62,3ft	65,6ft
6498lx	1625lx	722lx	406lx	260lx	181lx	133lx	102lx	80lx	65lx	54lx	45lx	38lx	33lx	29lx	25lx	22lx	20lx	18lx	16lx
603,7fcd	150,9fcd	67,1fcd	37,7fcd	24,1fcd	16,8fcd	12,3fcd	9,4fcd	7,5fcd	6fcd	5fcd	4,2fcd	3,6fcd	3,1fcd	2,7fcd	2,4fcd	2,1fcd	1,9fcd	1,7fcd	1,5fcd

Intensities in 0° c-plane

0°	5°	10°	15°	20°	25°	30°	35°	40°	45°	50°	55°	60°	65°	70°	75°	80°	85°	90°	95°
6498	6481	6418	6316	6167	5969	5732	5436	5094	4779	4395	3722	3032	2464	1735	901	309	50	2	2
100%	100%	99%	97%	95%	92%	88%	84%	78%	74%	68%	57%	47%	38%	27%	14%	5%	1%	0%	0%

Intensities in 90° c-plane

0°	5°	10°	15°	20°	25°	30°	35°	40°	45°	50°	55°	60°	65°	70°	75°	80°	85°	90°	95°
6498	6484	6423	6318	6171	5974	5725	5435	5090	4778	4398	3727	3058	2458	1737	904	299	47	1	2
100%	100%	99%	97%	95%	92%	88%	84%	78%	74%	68%	57%	47%	38%	27%	14%	5%	1%	0%	0%

Intensities in 180° c-plane

0°	5°	10°	15°	20°	25°	30°	35°	40°	45°	50°	55°	60°	65°	70°	75°	80°	85°	90°	95°
6498	6481	6418	6316	6167	5969	5732	5436	5094	4779	4395	3722	3032	2464	1735	901	309	50	2	2
100%	100%	99%	97%	95%	92%	88%	84%	78%	74%	68%	57%	47%	38%	27%	14%	5%	1%	0%	0%

Intensities in 270° c-plane

0°	5°	10°	15°	20°	25°	30°	35°	40°	45°	50°	55°	60°	65°	70°	75°	80°	85°	90°	95°
6498	6484	6423	6318	6171	5974	5725	5435	5090	4778	4398	3727	3058	2458	1737	904	299	47	1	2
100%	100%	99%	97%	95%	92%	88%	84%	78%	74%	68%	57%	47%	38%	27%	14%	5%	1%	0%	0%

Beam angle 50%	Field angle 10%	Cutoff angle 2,5%	Intensity ratio in 120° cone	Intensity ratio in 90° cone
116,8°	153,7°	164°	81,6%	54,4%

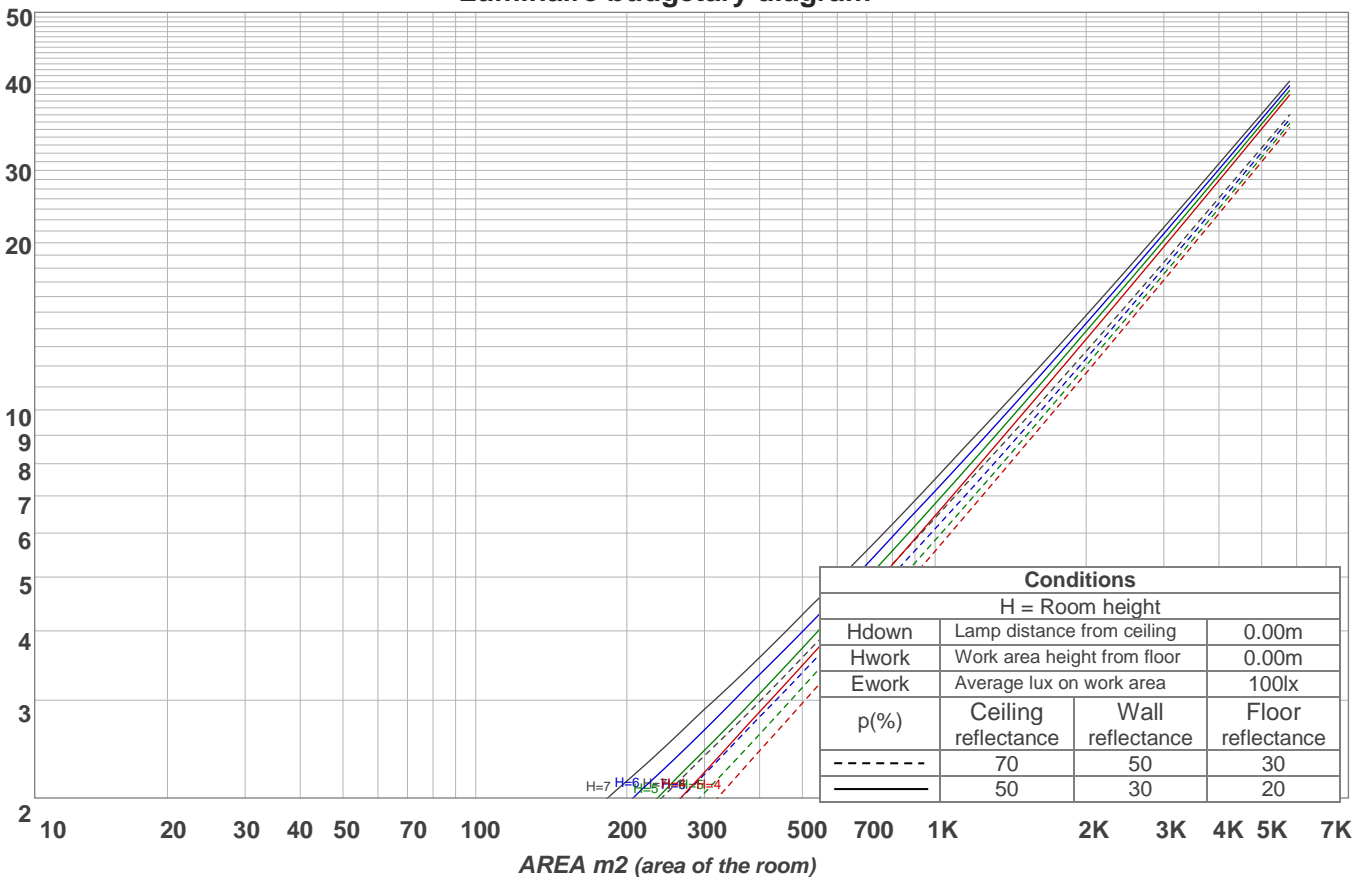
Light planning

Coefficients of Utilization

Ceiling reflectance	80				70				50			30			10			0	
Wall reflectance	70	50	30	10	70	50	30	10	50	30	10	50	30	10	50	30	10	0	
Floor reflectance	20	20	20	20	20	20	20	20	20	20	20	20	20	20	20	20	20	20	0
RCR	(RCR: Room Cavity Ratio)																		
	Room Values are expressed as percentage of Lumens delivered to the task surface																		
0	119	119	119	119	116	116	116	116	111	111	111	106	106	106	102	102	102	100	
1	109	105	101	97	107	103	99	96	98	95	93	95	92	90	91	89	87	85	
2	100	92	85	80	97	90	84	79	86	81	77	83	79	75	80	76	73	71	
3	91	80	72	66	88	79	71	65	76	70	64	73	68	63	71	66	62	60	
4	83	71	63	56	81	70	62	55	67	60	55	65	59	54	63	58	53	51	
5	76	63	55	48	74	62	54	48	60	53	47	58	52	47	56	51	46	44	
6	70	57	48	42	68	56	48	42	54	47	41	53	46	41	51	45	40	38	
7	65	52	43	37	63	51	42	37	49	42	36	48	41	36	46	40	36	34	
8	61	47	38	33	59	46	38	33	45	38	32	44	37	32	43	36	32	30	
9	57	43	35	29	55	42	35	29	41	34	29	40	34	29	39	33	29	27	
10	53	40	32	26	52	39	32	26	38	31	26	37	31	26	36	30	26	24	

LAMPS (number of lamps)

Luminaire budgetary diagram



Zonal Lumen Summary

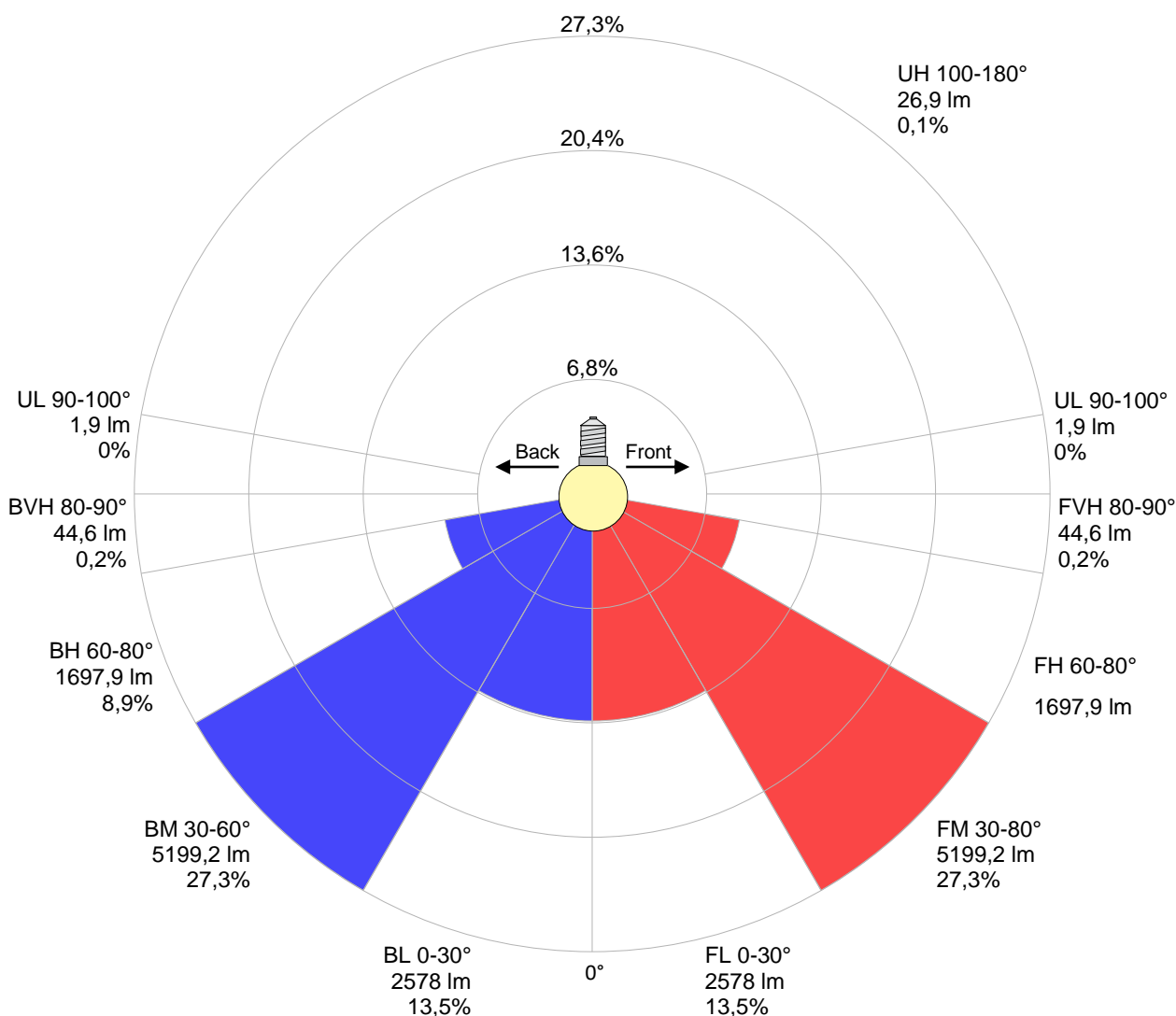
0°-10°	10°-20°	20°-30°	30°-40°	40°-50°	50°-60°	60°-70°	70°-80°	80°-90°
617 lm	1785 lm	2754 lm	3399 lm	3675 lm	3325 lm	2404 lm	992 lm	88,7 lm
90°-100°	100°-110°	110°-120°	120°-130°	130°-140°	140°-150°	150°-160°	160°-170°	170°-180°
1,91 lm	3,32 lm	5,30 lm	4,84 lm	4,12 lm	3,69 lm	2,99 lm	1,98 lm	0,708 lm

Road report

LCS table

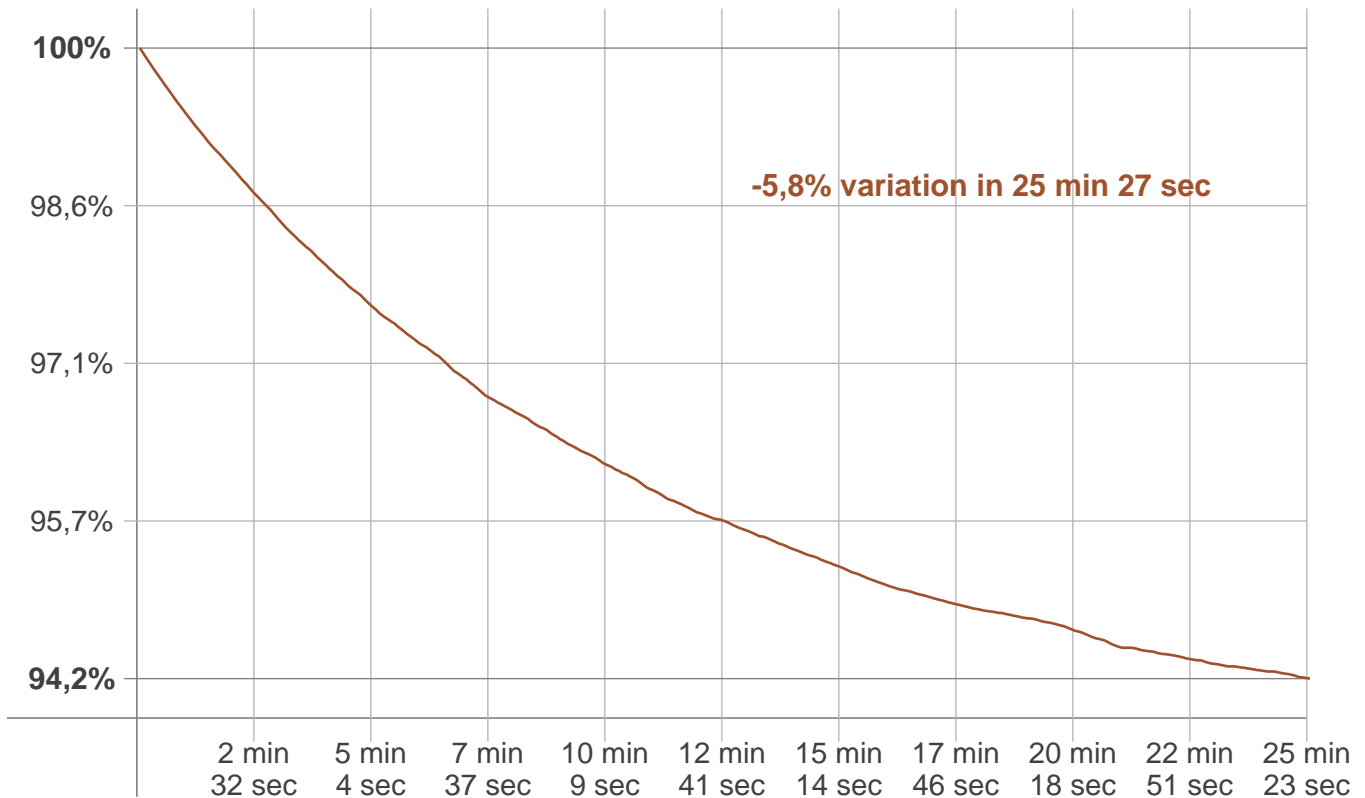
BUG rating:	B4 U2 G3	
Forward light	Lumens	Lumens %
Low(0-30):	2578	13,5%
Medium(30-60):	5199,2	27,3%
High(60-80):	1697,9	8,9%
Very high(80-90):	44,6	0,2%
Back light		
Low(0-30):	2578	13,5%
Medium(30-60):	5199,2	27,3%
High(60-80):	1697,9	8,9%
Very high(80-90):	44,6	0,2%
Uplight		
Low(90-100):	1,9	0%
High(100-180):	26,9	0,1%

LCS graph



Stabilization

Warmup curve



Warmup result

Warmup time:	25 min 27 sec
Warmup variation	-5,8%

Warmup conditions

Stable period:	15 min
Stable change max:	2,0%
Minimum time:	15 min

Color temperature change

CCT start	CCT change	CCT end
5000 K	+112 K	5112 K

Output change

Output start	Output change	Output end
20217 lm	-1149 lm	19068 lm