

Light efficiency:



Light quality:



Color temperature:



Output: 3210 lm

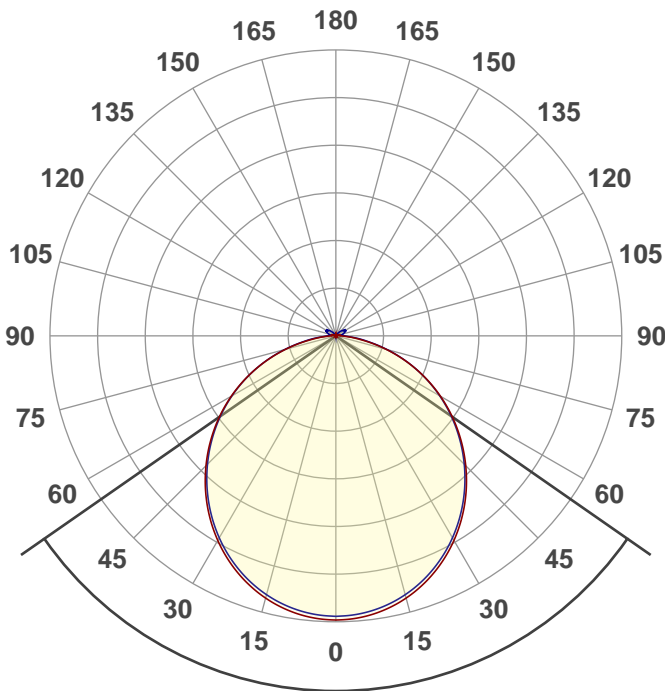
Peak: 1110 cd

Power: 35,1 W

PF: 1,0



Product name:
E0190-NEPTUNO-DML840 54 G1-4K



Beam angle **110,3°**



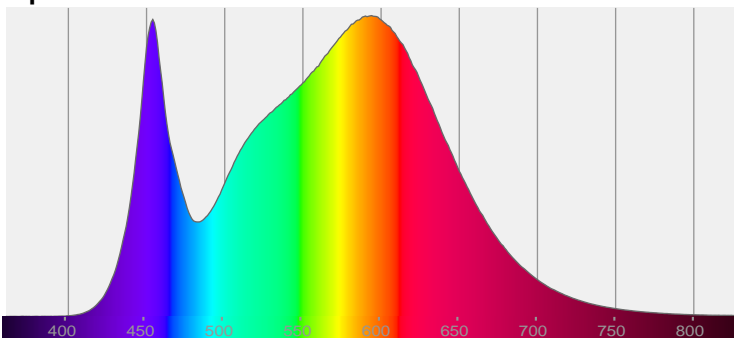
CIE 1931
x: 0,383
y: 0,380

THD Values:

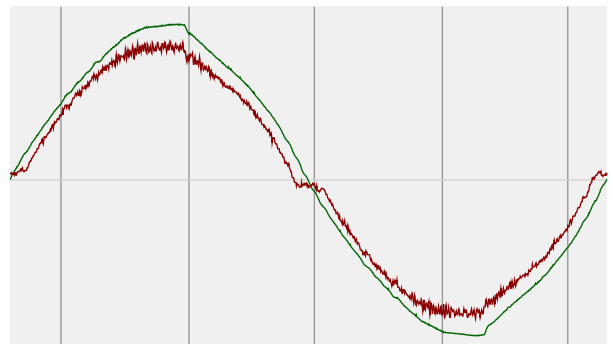
Voltage: 2,67%

Current: 5,98%

Spectra

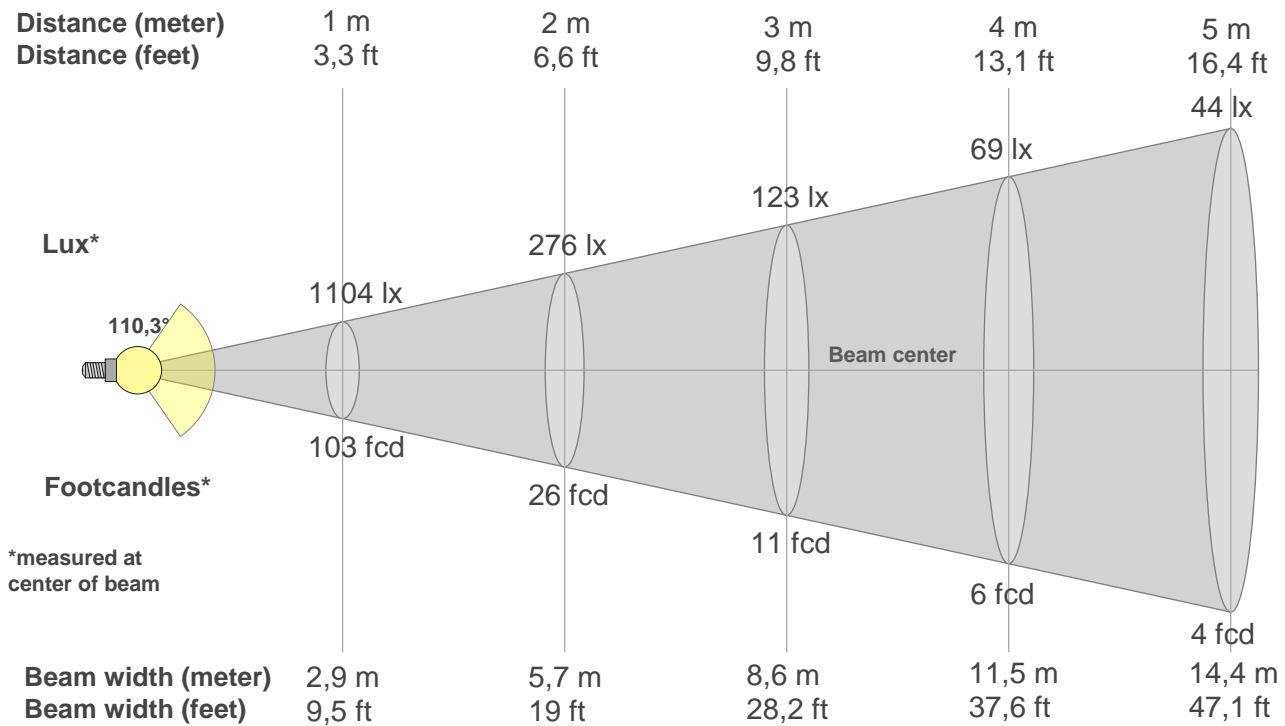


Power



Voltage: 115 V
Current: 0,306 A
Frequency: 60 Hz

Beam details



Beam intensities from 1-20m

1m	2m	3m	4m	5m	6m	7m	8m	9m	10m	11m	12m	13m	14m	15m	16m	17m	18m	19m	20m
3,3ft	6,6ft	9,8ft	13,1ft	16,4ft	19,7ft	23ft	26,2ft	29,5ft	32,8ft	36,1ft	39,4ft	42,7ft	45,9ft	49,2ft	52,5ft	55,8ft	59,1ft	62,3ft	65,6ft
1104lx	276lx	123lx	69lx	44lx	31lx	23lx	17lx	14lx	11lx	9lx	8lx	7lx	6lx	5lx	4lx	4lx	3lx	3lx	3lx
102,5fcd	25,6fcd	11,4fcd	6,4fcd	4,1fcd	2,8fcd	2,1fcd	1,6fcd	1,3fcd	1fcd	0,8fcd	0,7fcd	0,6fcd	0,5fcd	0,5fcd	0,4fcd	0,4fcd	0,3fcd	0,3fcd	0,3fcd

Intensities in 0° c-plane

0°	5°	10°	15°	20°	25°	30°	35°	40°	45°	50°	55°	60°	65°	70°	75°	80°	85°	90°	95°
1104	1103	1086	1059	1022	976	921	859	791	717	638	556	471	383	294	203	119	57	18	16
100%	100%	98%	96%	93%	88%	83%	78%	72%	65%	58%	50%	43%	35%	27%	18%	11%	5%	2%	1%

Intensities in 90° c-plane

0°	5°	10°	15°	20°	25°	30°	35°	40°	45°	50°	55°	60°	65°	70°	75°	80°	85°	90°	95°
1104	1088	1072	1045	1009	963	910	849	781	708	631	551	468	382	294	206	126	64	33	20
100%	99%	97%	95%	91%	87%	82%	77%	71%	64%	57%	50%	42%	35%	27%	19%	11%	6%	3%	2%

Intensities in 180° c-plane

0°	5°	10°	15°	20°	25°	30°	35°	40°	45°	50°	55°	60°	65°	70°	75°	80°	85°	90°	95°
1104	1103	1086	1059	1022	976	921	859	791	717	638	556	471	383	294	203	119	57	18	16
100%	100%	98%	96%	93%	88%	83%	78%	72%	65%	58%	50%	43%	35%	27%	18%	11%	5%	2%	1%

Intensities in 270° c-plane

0°	5°	10°	15°	20°	25°	30°	35°	40°	45°	50°	55°	60°	65°	70°	75°	80°	85°	90°	95°
1104	1088	1072	1045	1009	963	910	849	781	708	631	551	468	382	294	206	126	64	33	20
100%	99%	97%	95%	91%	87%	82%	77%	71%	64%	57%	50%	42%	35%	27%	19%	11%	6%	3%	2%

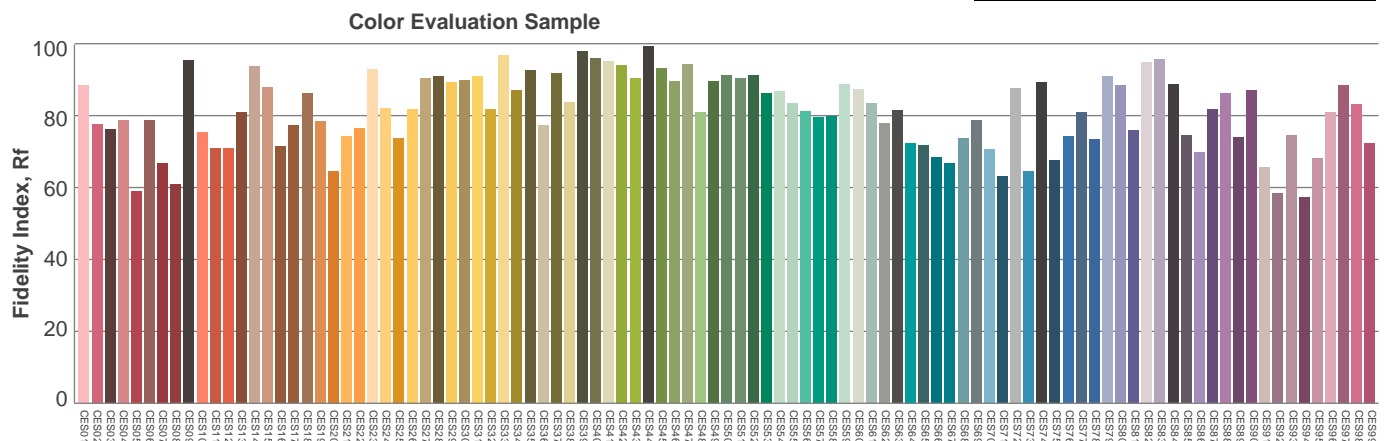
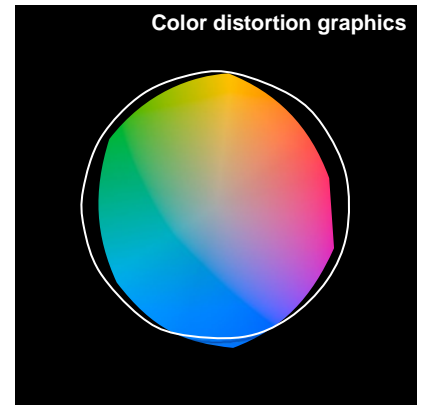
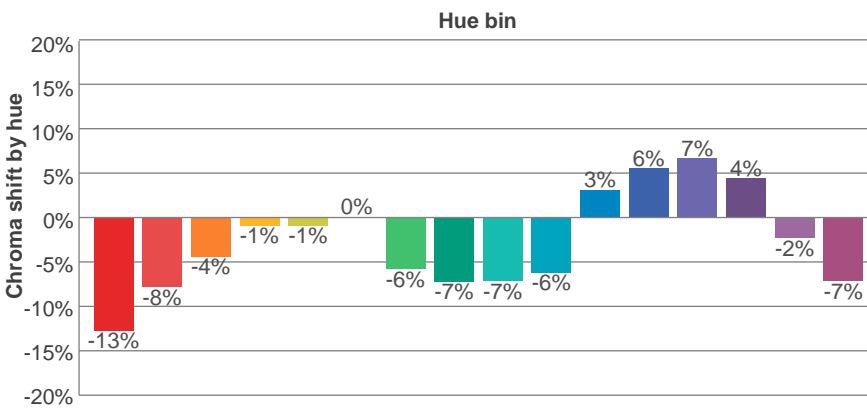
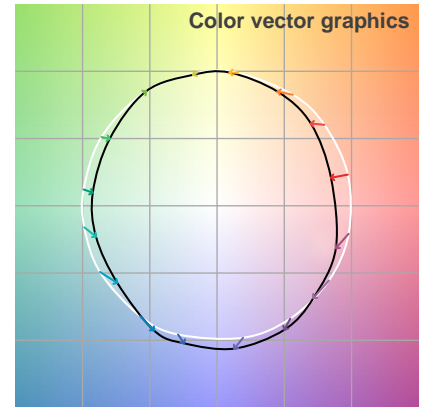
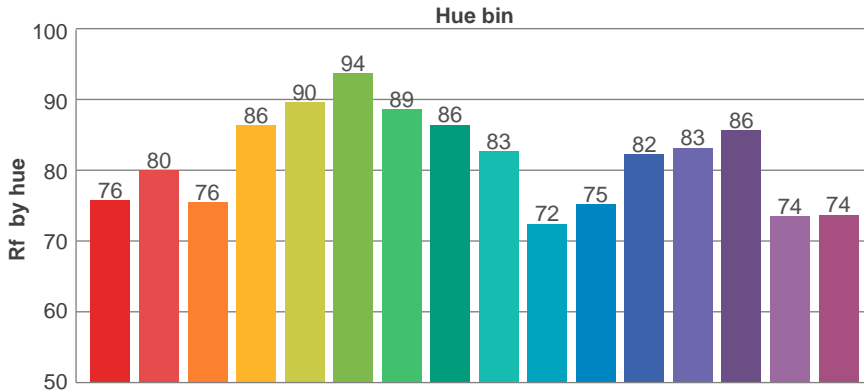
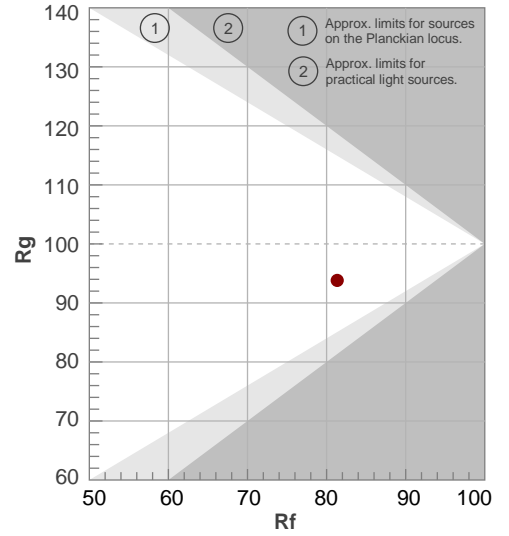
Beam angle 50%	Field angle 10%	Cutoff angle 2,5%	Intensity ratio in 120° cone	Intensity ratio in 90° cone
110,3°	161,5°	239,8°	75,7%	51,8%

TM30 details

Rf 81,3
Fidelity index Rf

Rg 93,8
Gammut index Rg

Hue Bin	R _f	Graphic shifts (%)	
		Chroma	Hue
1	76	-13%	0%
2	80	-8%	6%
3	76	-4%	11%
4	86	-1%	6%
5	90	-1%	3%
6	94	0%	-2%
7	89	-6%	-2%
8	86	-7%	1%
9	83	-7%	8%
10	72	-6%	14%
11	75	3%	14%
12	82	6%	6%
13	83	7%	-8%
14	86	4%	-8%
15	74	-2%	-17%
16	74	-7%	-12%



UGR

Glare Evaluation According to UGR

p Ceiling	70	70	50	50	30	70	70	50	50	30	
p Walls	50	30	50	30	30	50	30	50	30	30	
p Floor	20	20	20	20	20	20	20	20	20	20	
Room size X Y	Viewing direction at right angles to lamp axis					Viewing direction parallel to lamp axis					
2H	2H	28,6	29,9	29,0	30,2	30,5	28,6	29,8	28,9	30,1	30,4
	3H	30,2	31,3	30,5	31,7	32,0	30,1	31,3	30,5	31,6	32,0
	4H	30,8	31,9	31,2	32,2	32,6	30,8	31,9	31,2	32,2	32,6
	6H	31,2	32,2	31,6	32,6	33,0	31,2	32,2	31,6	32,6	33,0
	8H	31,3	32,3	31,8	32,7	33,1	31,4	32,4	31,8	32,7	33,1
	12H	31,4	32,4	31,9	32,8	33,2	31,5	32,5	32,0	32,8	33,3
4H	2H	29,3	30,4	29,7	30,7	31,1	29,2	30,3	29,6	30,7	31,0
	3H	31,0	31,9	31,4	32,3	32,7	31,0	31,9	31,4	32,3	32,7
	4H	31,8	32,6	32,2	33,0	33,4	31,8	32,6	32,2	33,0	33,4
	6H	32,3	33,0	32,8	33,5	33,9	32,3	33,1	32,8	33,5	34,0
	8H	32,5	33,1	33,0	33,6	34,1	32,6	33,2	33,1	33,7	34,2
	12H	32,6	33,2	33,1	33,7	34,2	32,7	33,3	33,2	33,8	34,3
8H	4H	32,0	32,7	32,5	33,2	33,6	32,0	32,7	32,5	33,2	33,6
	6H	32,7	33,3	33,2	33,8	34,3	32,8	33,3	33,3	33,8	34,3
	8H	33,0	33,5	33,5	34,0	34,5	33,1	33,5	33,6	34,1	34,6
	12H	33,2	33,6	33,8	34,1	34,7	33,3	33,7	33,9	34,3	34,8
12H	4H	32,1	32,7	32,6	33,1	33,6	32,1	32,7	32,6	33,1	33,6
	6H	32,8	33,3	33,3	33,8	34,3	32,8	33,3	33,3	33,8	34,3
	8H	33,1	33,5	33,6	34,0	34,6	33,2	33,6	33,7	34,1	34,7
Variation of the observer position for the luminaire distance S											
S = 1,0H	+0,1 / -0,1					+0,1 / -0,1					
S = 1,5H	+0,2 / -0,3					+0,2 / -0,3					
S = 2,0H	+0,4 / -0,7					+0,4 / -0,6					
Standard table	BK06					BK06					
Correction summand	16,0					16,0					
Corrected glare indices referring to 3210 lm total luminous flux											

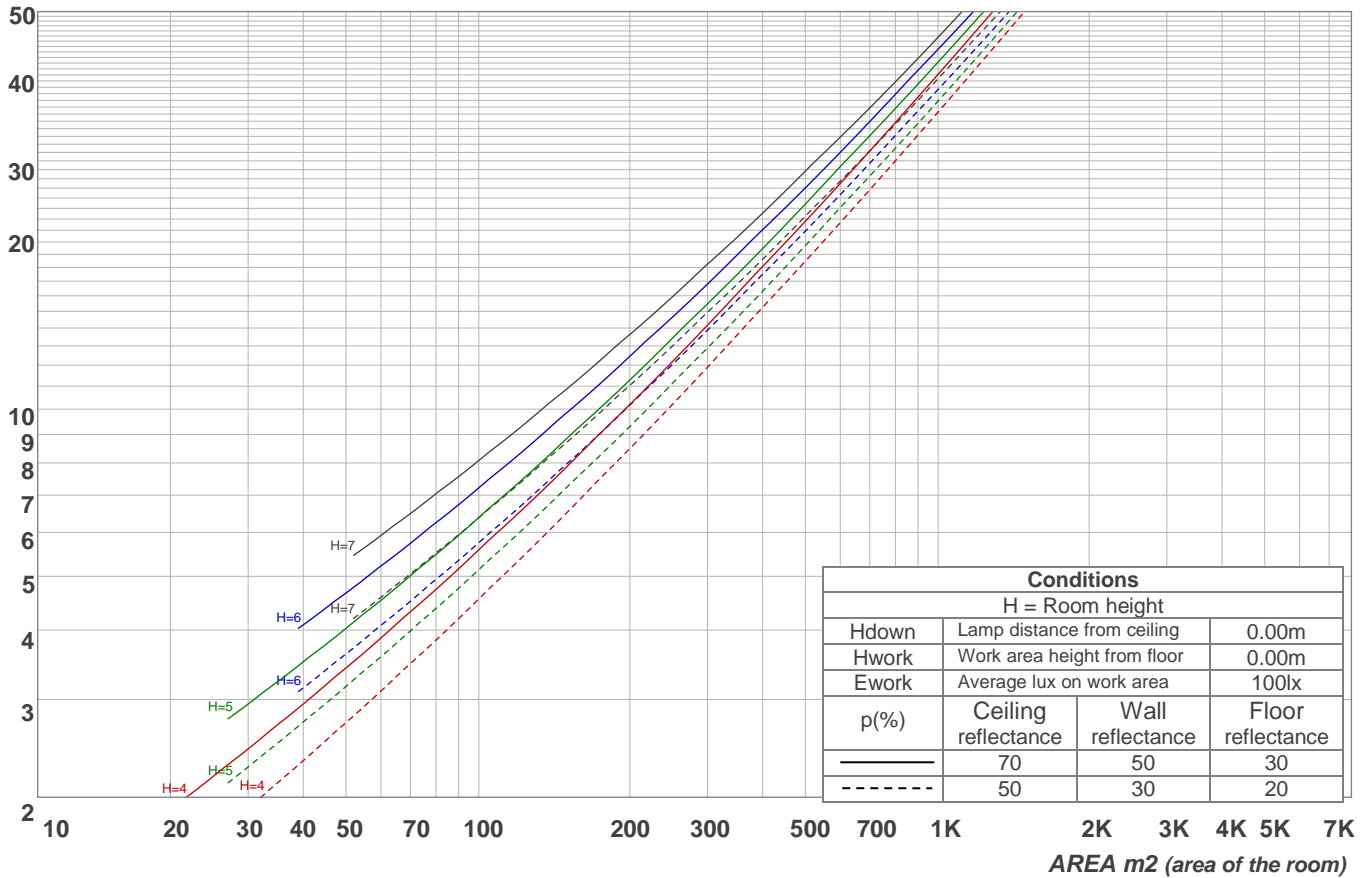
Light planning

Coefficients of Utilization

Ceiling reflectance	80				70				50			30			10			0		
Wall reflectance	70	50	30	10	70	50	30	10	50	30	10	50	30	10	50	30	10	0		
Floor reflectance	20	20	20	20	20	20	20	20	20	20	20	20	20	20	20	20	20	20	20	20
RCR	(RCR: Room Cavity Ratio)																			
	Room Values are expressed as percentage of Lumens delivered to the task surface																			
0	118	118	118	118	115	115	115	115	109	109	109	104	104	104	99	99	99	96		
1	108	103	99	95	105	100	96	93	95	92	89	91	88	86	87	85	83	80		
2	98	90	83	77	95	87	81	76	83	78	74	80	75	71	76	72	69	67		
3	89	79	71	64	86	77	69	63	73	67	62	70	65	60	67	63	59	56		
4	82	70	61	54	79	68	60	54	65	58	52	62	56	51	60	55	50	48		
5	75	62	53	47	73	61	52	46	58	51	45	56	50	45	54	48	44	42		
6	69	56	47	41	67	55	46	40	53	45	40	51	44	39	49	43	38	36		
7	64	51	42	36	62	50	42	36	48	41	35	46	40	35	45	39	34	32		
8	60	46	38	32	58	45	37	32	44	37	31	42	36	31	41	35	31	29		
9	56	43	34	29	54	42	34	29	40	33	28	39	33	28	38	32	28	26		
10	52	39	31	26	51	39	31	26	37	30	26	36	30	25	35	29	25	23		

LAMPS (number of lamps)

Luminaire budgetary diagram

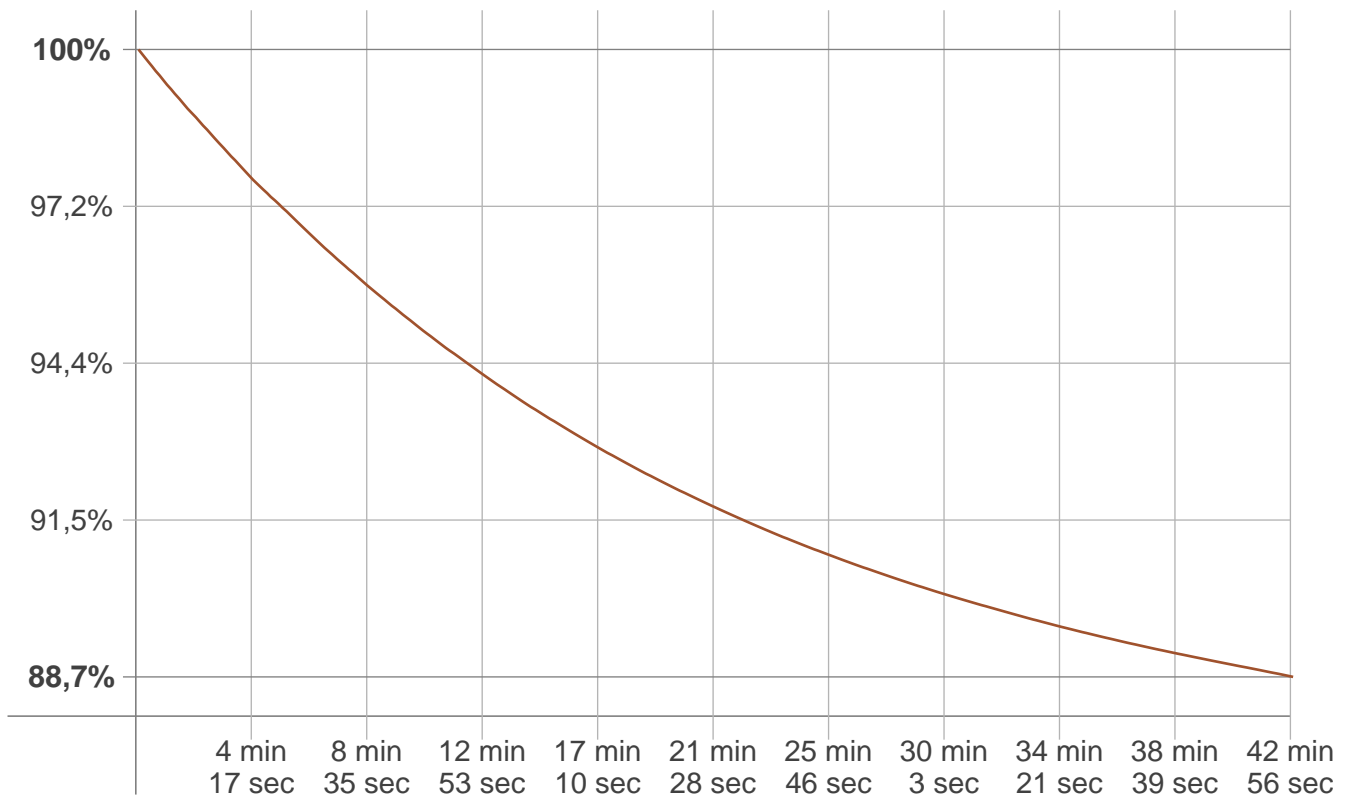


Zonal Lumen Summary

0°-10°	10°-20°	20°-30°	30°-40°	40°-50°	50°-60°	60°-70°	70°-80°	80°-90°
104 lm	297 lm	448 lm	535 lm	551 lm	496 lm	379 lm	217 lm	68,9 lm
90°-100°	100°-110°	110°-120°	120°-130°	130°-140°	140°-150°	150°-160°	160°-170°	170°-180°
20,9 lm	24,5 lm	28,2 lm	23,9 lm	12,2 lm	4,16 lm	1,11 lm	0,289 lm	0,022 lm

Stabilization

Warmup curve



Warmup result

Warmup time:	43 min 4 sec
Warmup variation	-11,3%

Warmup conditions

Stable period:	15 min
Stable change max:	2,0%
Minimum time:	15 min

Color temperature change

CCT start	CCT change	CCT end
3862 K	+95 K	3957 K

Output change

Output start	Output change	Output end
3614 lm	-404 lm	3210 lm