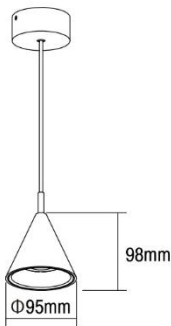


Luminaria para interior



Dimensiones (mm)

Ancho: Ø95
Alto: 98.



Código

SL373

Descripción

Luminaria para descolgar, diseñada con COB de LED. Compuesta por un óptico especular y un difusor tipo lente el cual permite un mejor reparto de luz.



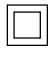
Materiales y acabado

Cuerpo en aluminio y base sujetadora en acero con acabado en pintura poliéster electrostática en polvo.

Color

Negra texturizada.

Características técnicas

LED	 36°	 30,000h	IP 20	
PF 0,93	THD <20%	°C 0-40	V 110-240	

Fuente de luz

COB de LED.

Potencia Nominal	CRI	K	Lm / W	Lm de Salida
10W	>80	3000	171	1620

Características de fuente de luz

- Color temperatura disponible 3000K (cálido).
- Marca LED: CITIZEN. Marca Driver: AREEK.
- Potencia de Salida: 9,5W.

Light efficiency:



Light quality:



Color temperature:



Output: 1620 lm

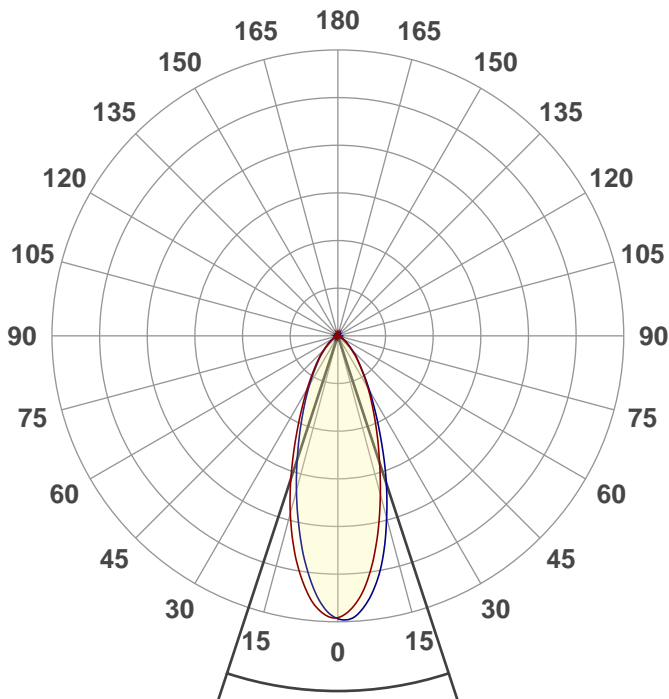
Peak: 2790 cd

Power: 9,5 W

PF: 0,93



Product name:
E0226-SL373



Beam angle

36,4°



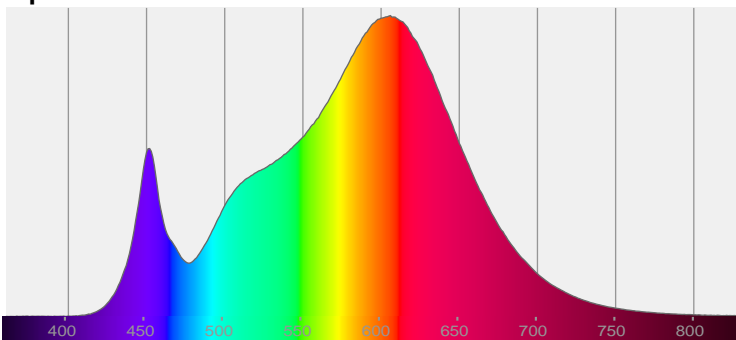
CIE 1931
x: 0,435
y: 0,404

THD Values:

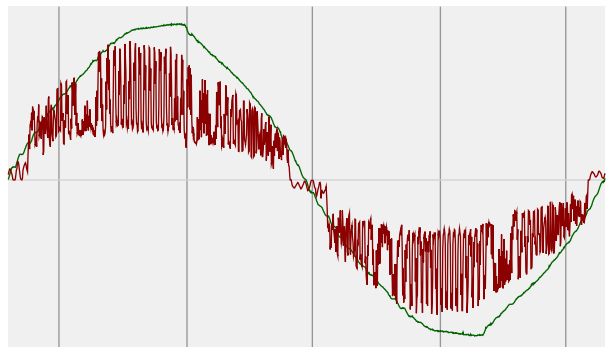
Voltage: 2,53%

Current: 17,64%

Spectra

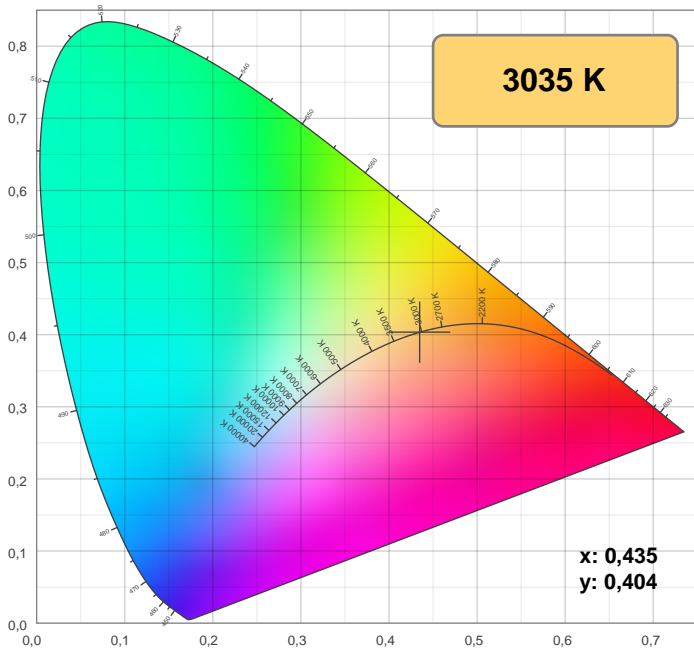


Power



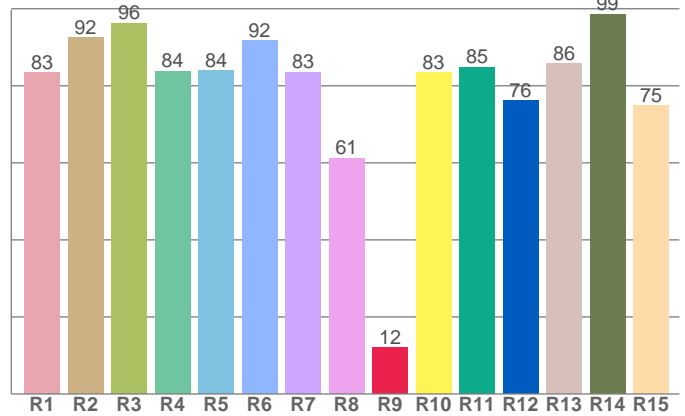
Voltage: 115 V
Current: 0,089 A
Frequency: 59,9 Hz

Color details



CIE 1931

CRI: 84,5 (R1-R8)

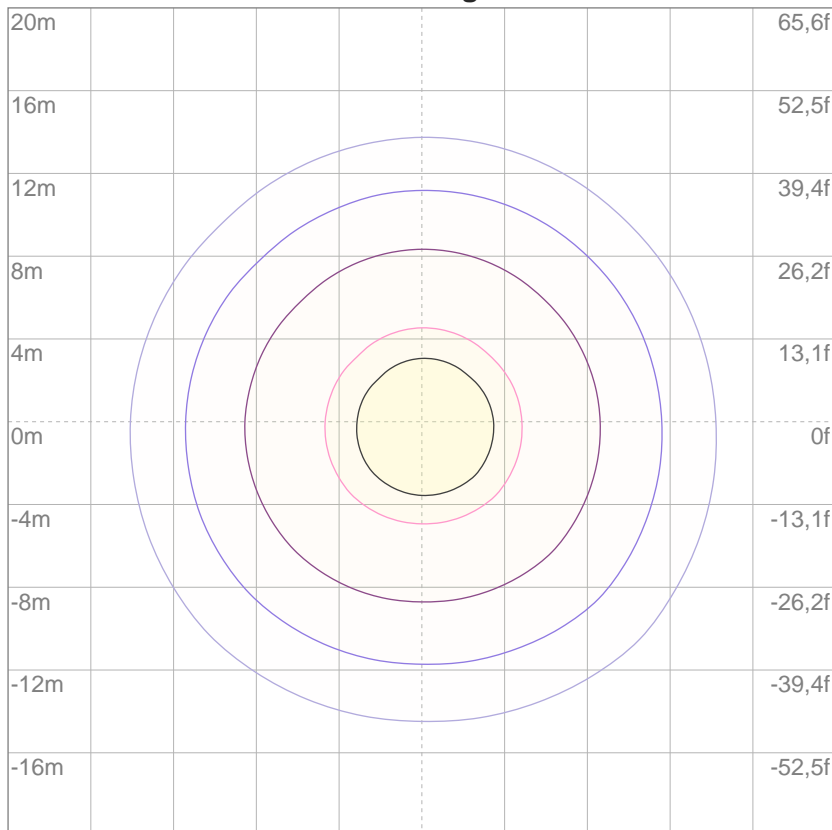


CRI R values, only R1-R8 are used to calculate final CRI value

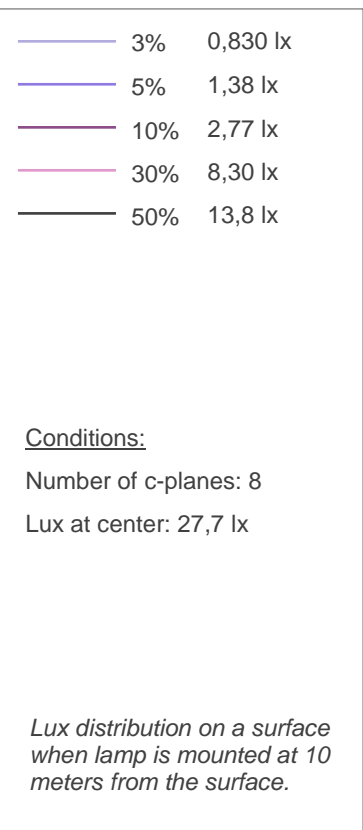
R1	R2	R3	R4	R5	R6	R7	R8	9	R10	R11	R12	R13	R14	R15
83,3	92,5	96,3	83,8	84,0	91,7	83,5	61,2	12,0	83,4	84,8	76,1	85,7	98,6	74,8

ISO Diagrams

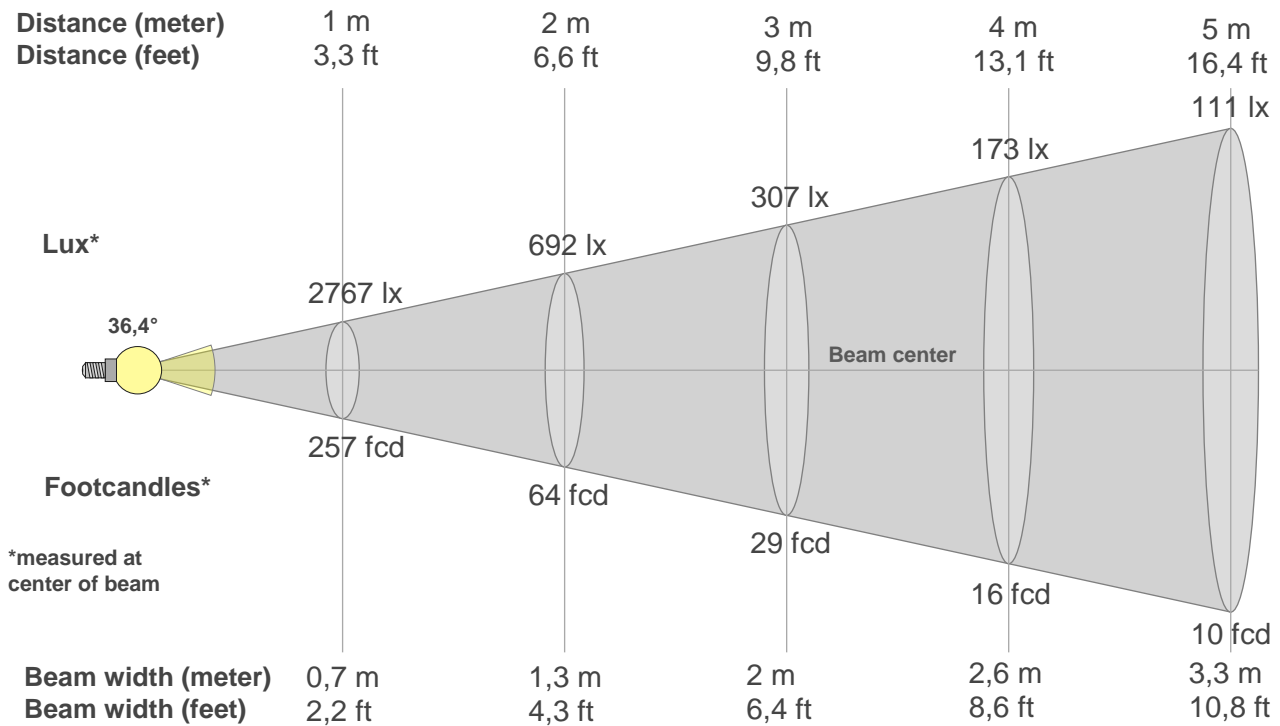
ISO lux diagram



Mounting height: 10 meters (33 f)



Beam details



Beam intensities from 1-20m

1m	2m	3m	4m	5m	6m	7m	8m	9m	10m	11m	12m	13m	14m	15m	16m	17m	18m	19m	20m
3,3ft	6,6ft	9,8ft	13,1ft	16,4ft	19,7ft	23ft	26,2ft	29,5ft	32,8ft	36,1ft	39,4ft	42,7ft	45,9ft	49,2ft	52,5ft	55,8ft	59,1ft	62,3ft	65,6ft
2767lx	692lx	307lx	173lx	111lx	77lx	56lx	43lx	34lx	28lx	23lx	19lx	16lx	14lx	12lx	11lx	10lx	9lx	8lx	7lx
257,1fc	64,3fcd	28,6fcd	16,1fcd	10,3fcd	7,1fcd	5,2fcd	4fcd	3,2fcd	2,6fcd	2,1fcd	1,8fcd	1,5fcd	1,3fcd	1,1fcd	1fcd	0,9fcd	0,8fcd	0,7fcd	0,6fcd

Intensities in 0° c-plane

0°	2°	4°	6°	8°	10°	12°	14°	16°	18°	20°	22°	24°	26°	28°	30°	32°	34°	36°	38°
2767	2716	2623	2490	2319	2123	1919	1712	1514	1329	1166	1022	892	779	681	592	511	441	381	330
100%	98%	95%	90%	84%	77%	69%	62%	55%	48%	42%	37%	32%	28%	25%	21%	18%	16%	14%	12%

Intensities in 90° c-plane

0°	2°	4°	6°	8°	10°	12°	14°	16°	18°	20°	22°	24°	26°	28°	30°	32°	34°	36°	38°
2767	2787	2742	2647	2518	2359	2168	1956	1748	1544	1344	1155	990	849	727	623	532	453	388	336
100%	101%	99%	96%	91%	85%	78%	71%	63%	56%	49%	42%	36%	31%	26%	23%	19%	16%	14%	12%

Intensities in 180° c-plane

0°	2°	4°	6°	8°	10°	12°	14°	16°	18°	20°	22°	24°	26°	28°	30°	32°	34°	36°	38°
2767	2756	2694	2592	2448	2284	2099	1903	1704	1498	1298	1116	957	820	705	604	518	446	385	334
100%	100%	97%	94%	88%	83%	76%	69%	62%	54%	47%	40%	35%	30%	25%	22%	19%	16%	14%	12%

Intensities in 270° c-plane

0°	2°	4°	6°	8°	10°	12°	14°	16°	18°	20°	22°	24°	26°	28°	30°	32°	34°	36°	38°
2767	2717	2605	2447	2266	2070	1865	1668	1478	1297	1132	985	855	743	645	558	480	414	358	311
100%	98%	94%	88%	82%	75%	67%	60%	53%	47%	41%	36%	31%	27%	23%	20%	17%	15%	13%	11%

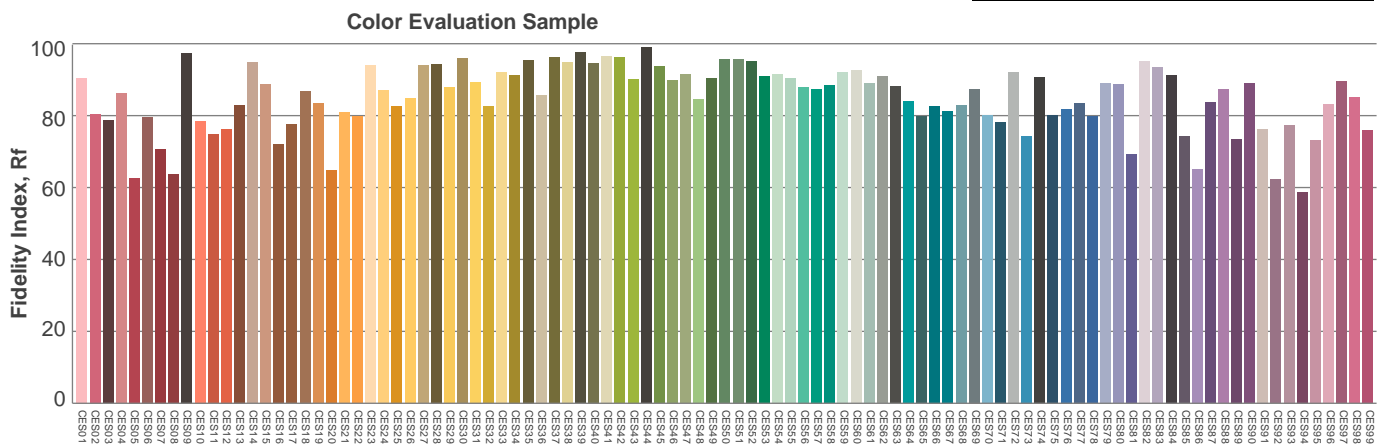
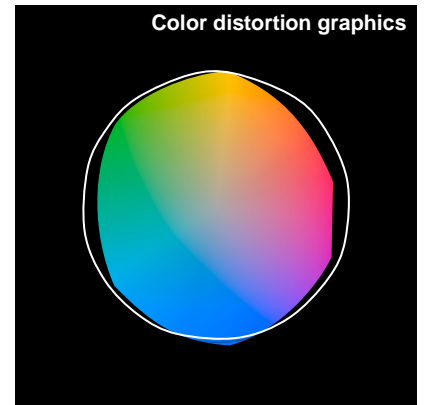
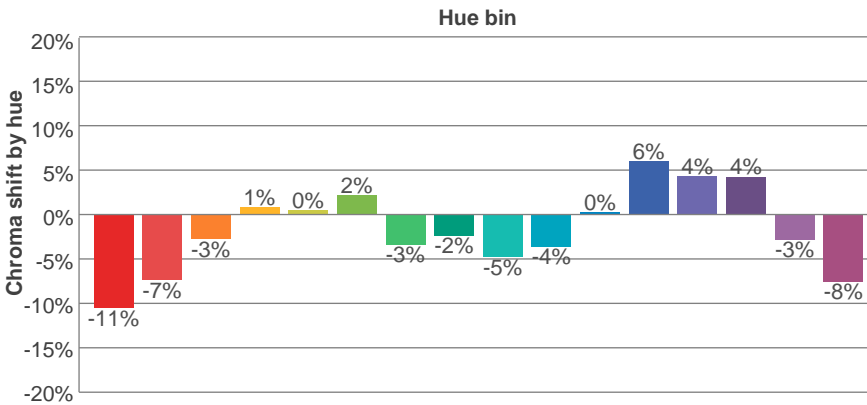
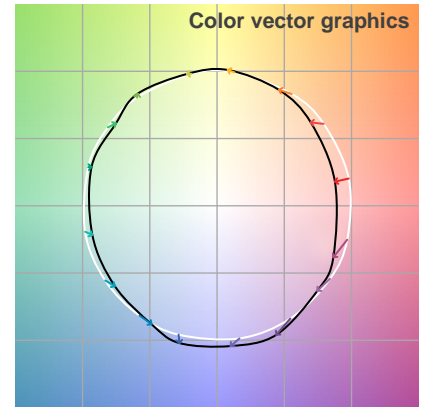
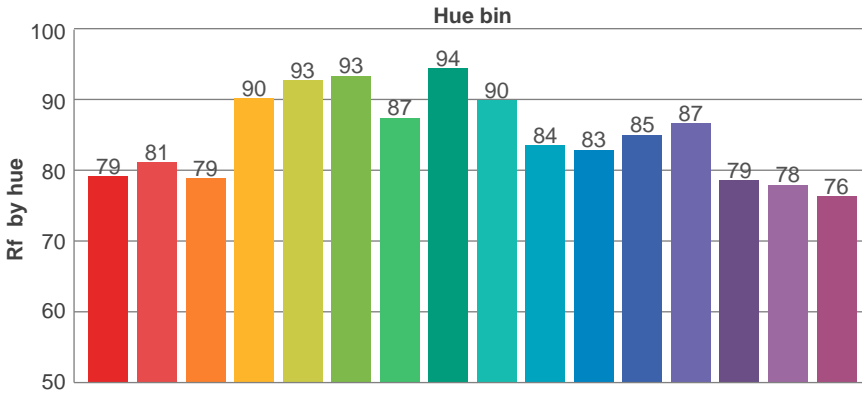
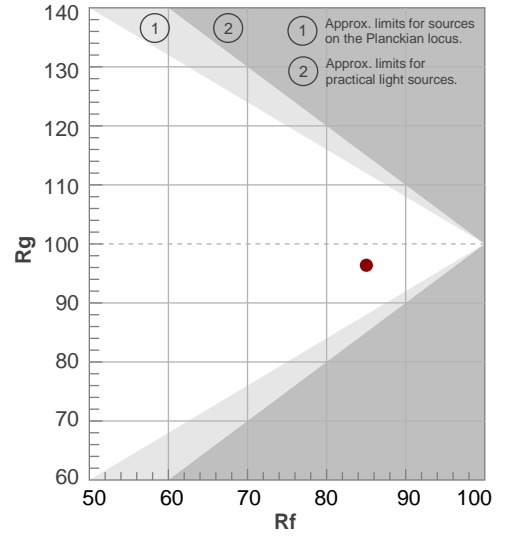
Beam angle 50%	Field angle 10%	Cutoff angle 2,5%	Intensity ratio in 120° cone	Intensity ratio in 90° cone
36,4°	81°	113,2°	98,0%	89,5%

TM30 details

Rf 85,0
Fidelity index Rf

Rg 96,4
Gammut index Rg

Hue Bin	R _f	Graphic shifts (%)	
		Chroma	Hue
1	79	-11%	0%
2	81	-7%	6%
3	79	-3%	10%
4	90	1%	5%
5	93	0%	3%
6	93	2%	-2%
7	87	-3%	-6%
8	94	-2%	-1%
9	90	-5%	3%
10	84	-4%	7%
11	83	0%	11%
12	85	6%	2%
13	87	4%	-8%
14	79	4%	-15%
15	78	-3%	-13%
16	76	-8%	-15%



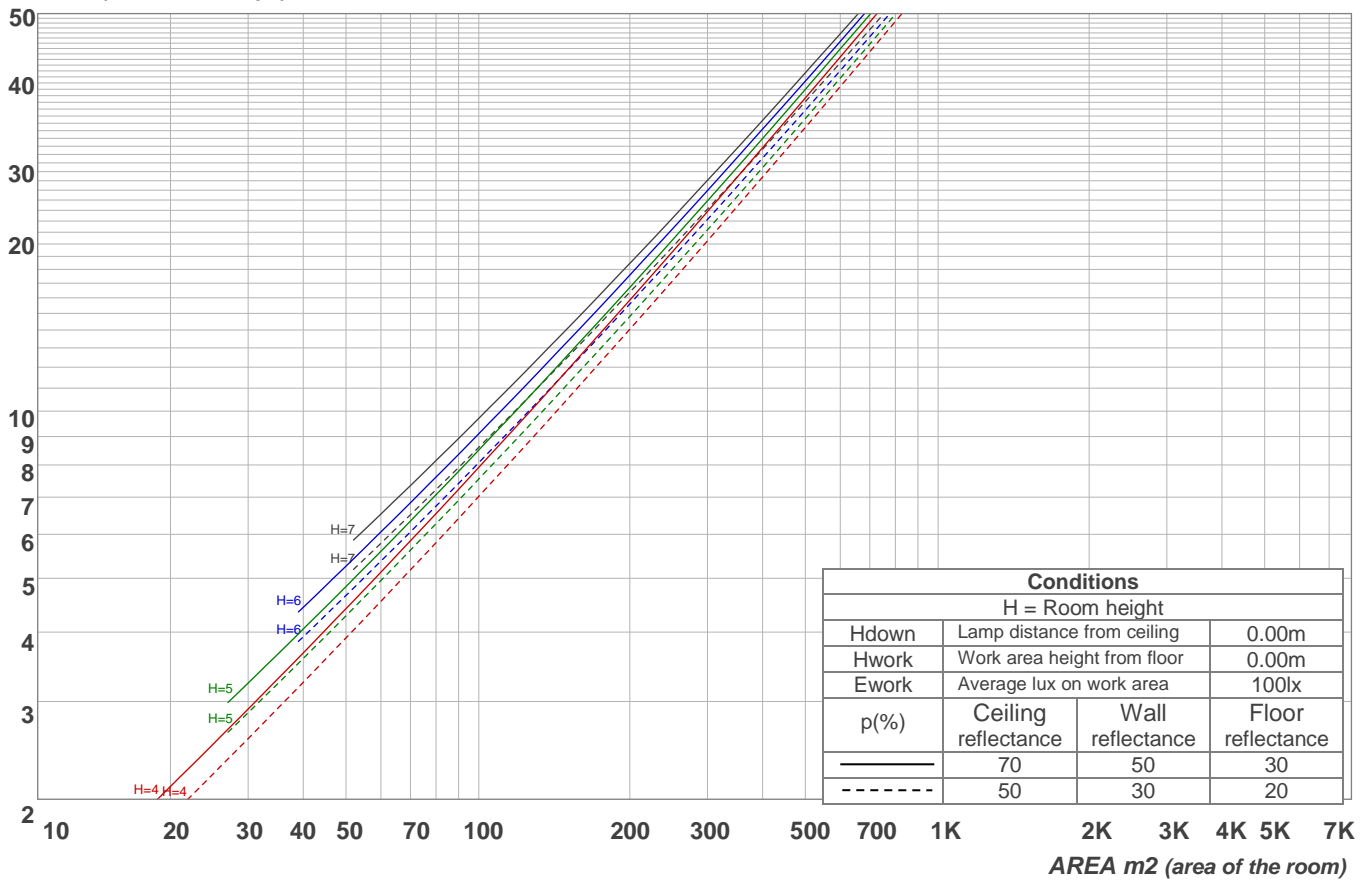
Light planning

Coefficients of Utilization

Ceiling reflectance	80				70				50			30			10			0
Wall reflectance	70	50	30	10	70	50	30	10	50	30	10	50	30	10	50	30	10	0
Floor reflectance	20	20	20	20	20	20	20	20	20	20	20	20	20	20	20	20	20	0
RCR	(RCR: Room Cavity Ratio)																	
	Room Values are expressed as percentage of Lumens delivered to the task surface																	
0	119	119	119	119	116	116	116	116	111	111	111	106	106	106	102	102	102	100
1	113	110	108	106	111	108	106	104	104	102	101	100	99	98	97	96	95	93
2	107	102	98	95	105	101	97	94	97	94	92	94	92	90	92	90	88	86
3	102	95	90	86	100	94	89	85	91	87	84	89	85	83	86	84	81	80
4	97	89	83	79	95	88	82	78	85	81	77	83	80	76	82	78	76	74
5	92	83	77	73	90	82	77	72	80	75	72	79	74	71	77	73	70	69
6	87	78	72	68	86	77	72	67	76	71	67	74	70	66	73	69	66	65
7	83	74	67	63	82	73	67	63	72	66	63	70	66	62	69	65	62	61
8	79	69	63	59	78	69	63	59	68	63	59	67	62	59	66	62	58	57
9	75	66	60	56	74	65	60	56	64	59	56	63	59	55	63	58	55	54
10	72	63	57	53	71	62	57	53	61	56	53	61	56	53	60	55	52	51

LAMPS (number of lamps)

Luminaire budgetary diagram

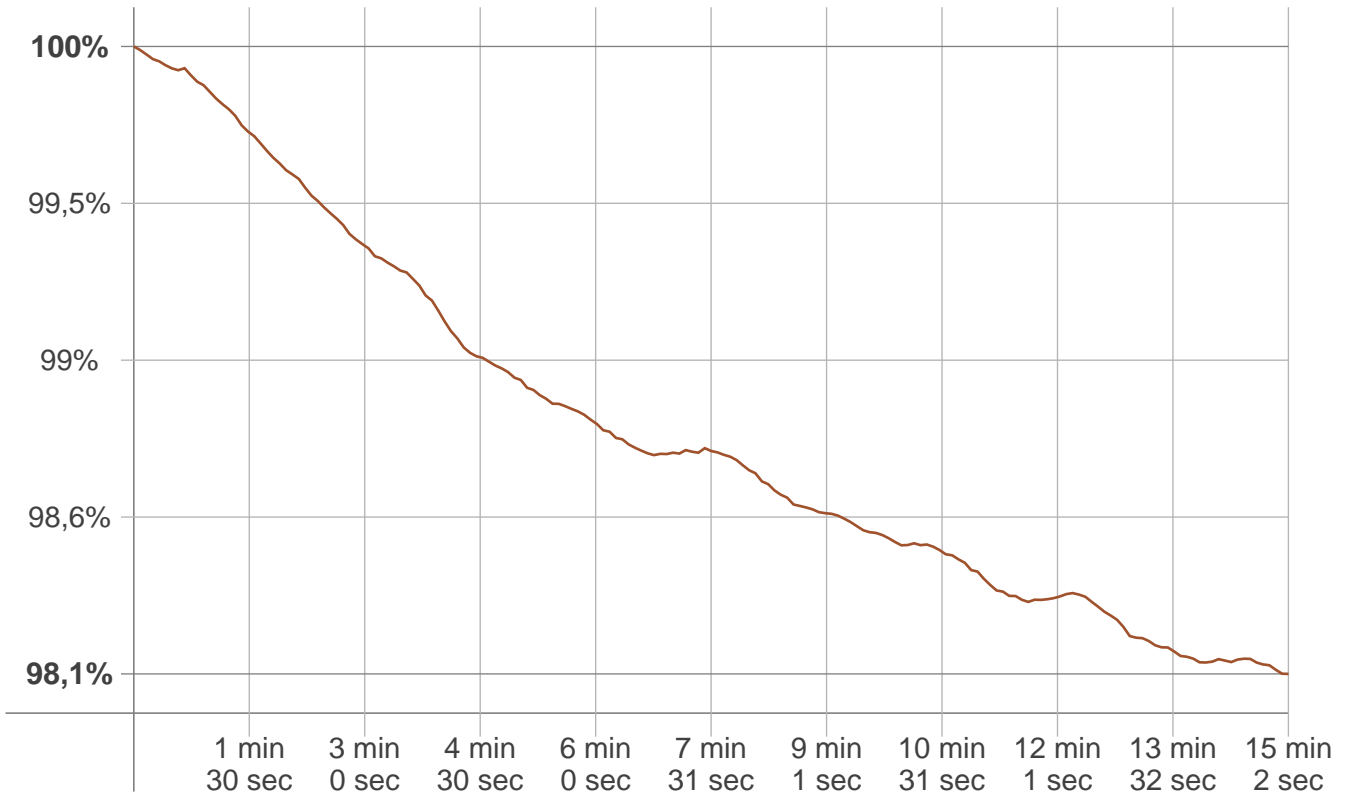


Zonal Lumen Summary

0°-10°	10°-20°	20°-30°	30°-40°	40°-50°	50°-60°	60°-70°	70°-80°	80°-90°
236 lm	470 lm	397 lm	259 lm	151 lm	74,4 lm	27,6 lm	3,35 lm	0,145 lm
90°-100°	100°-110°	110°-120°	120°-130°	130°-140°	140°-150°	150°-160°	160°-170°	170°-180°
0,134 lm	0,138 lm	0,136 lm	0,139 lm	0,156 lm	0,170 lm	0,165 lm	0,097 lm	0,018 lm

Stabilization

Warmup curve



Warmup result

Warmup time:	15 min 2 sec
Warmup variation	-1,9%

Warmup conditions

Stable period:	15 min
Stable change max:	2,0%
Minimum time:	15 min

Color temperature change

CCT start	CCT change	CCT end
3022 K	+13 K	3035 K

Output change

Output start	Output change	Output end
1649 lm	-30 lm	1620 lm