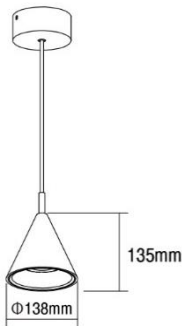


## Luminaria para interior



### Dimensiones (mm)

**Ancho:** Ø138  
**Alto:** 135.



### Código

**SL374**

### Descripción

Luminaria para descolgar, diseñada con COB de LED. Compuesta por un óptico especular y un difusor tipo lente el cual permite un mejor reparto de luz.



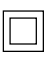
### Materiales y acabado

Cuerpo en aluminio y base sujetadora en acero con acabado en pintura poliéster electrostática en polvo.

### Color

Negra texturizada.

### Características técnicas

<b>LED</b>	 35°	 30,000h	<b>IP 20</b>	
<b>PF</b> 0,99	<b>THD</b> <10%	<b>°C</b> 0-40	<b>V</b> 110-240	

### Fuente de luz

COB de LED.

Potencia Nominal	CRI	K	Lm / W	Lm de Salida
20W	>80	3000	120	2348

### Características de fuente de luz

- Color temperatura disponible 3000K (cálido).
- Marca LED: CITIZEN. Marca Driver: AREEK.
- Potencia de Salida: 19,6W.

Light efficiency:



Light quality:



Color temperature:



Output: 2348 lm

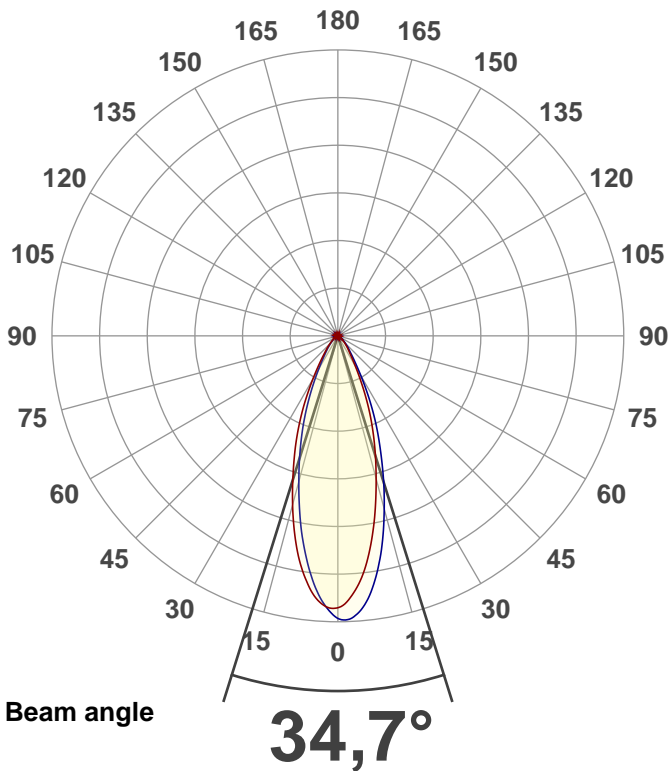
Peak: 5044 cd

Power: 19,6 W

PF: 0,99



Product name:  
E0225-SL374



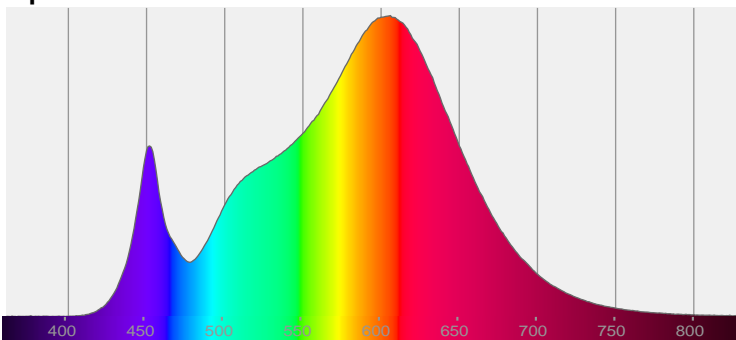
CIE 1931  
x: 0,432  
y: 0,403

THD Values:

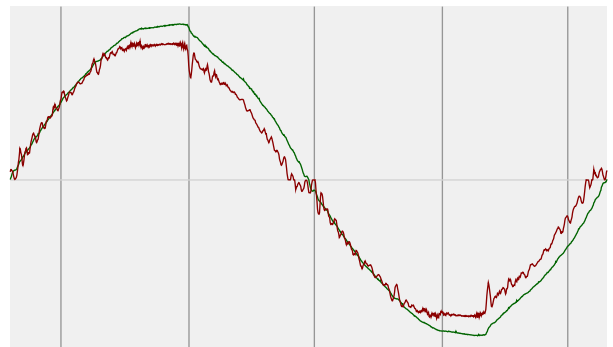
Voltage: 2,47%

Current: 4,45%

Spectra

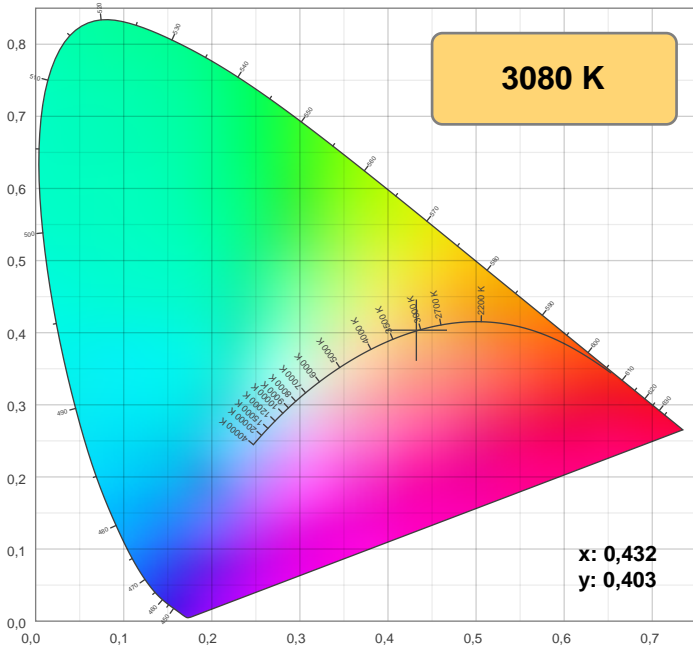


Power



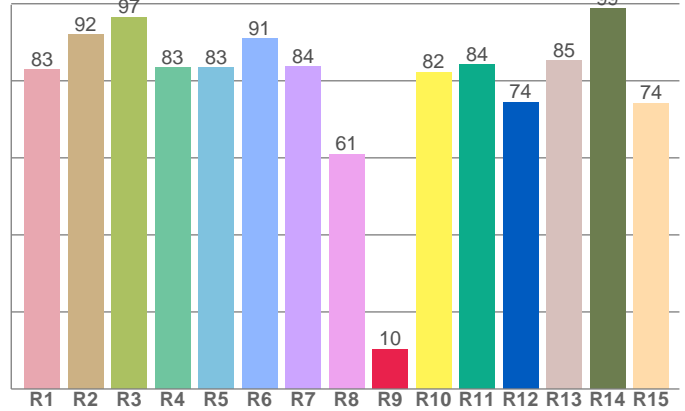
Voltage: 116 V  
Current: 0,170 A  
Frequency: 59,9 Hz

## Color details



CIE 1931

CRI: 84,2 (R1-R8)

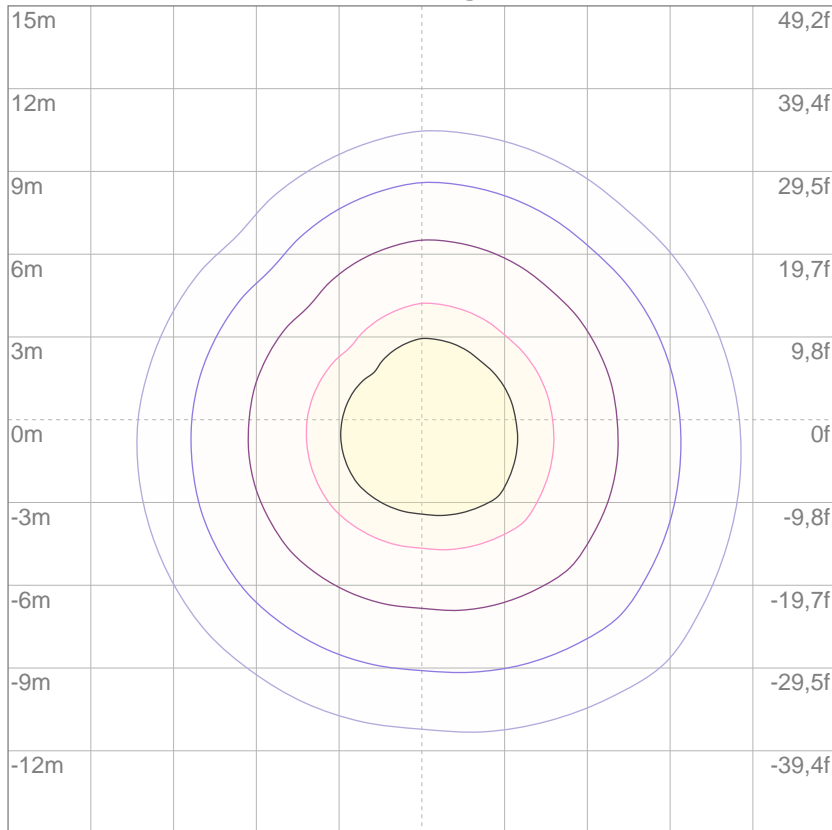


CRI R values, only R1-R8 are used to calculate final CRI value

R1	R2	R3	R4	R5	R6	R7	R8	9	R10	R11	R12	R13	R14	R15
82,8	92,0	96,6	83,4	83,4	90,9	83,6	60,9	10,3	82,2	84,2	74,4	85,2	98,7	74,2

## ISO Diagrams

### ISO lux diagram



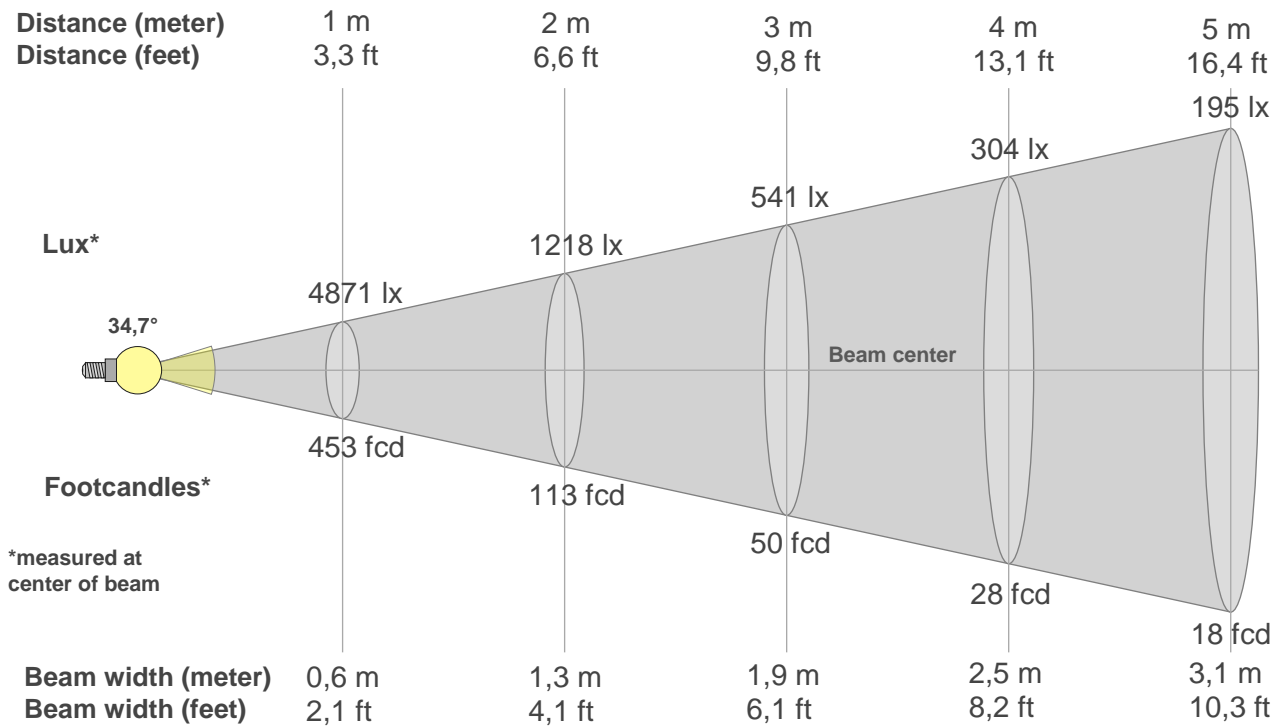
Mounting height: 10 meters (33 f)

3%	1,46 lx
5%	2,44 lx
10%	4,87 lx
30%	14,6 lx
50%	24,4 lx

Conditions:  
 Number of c-planes: 8  
 Lux at center: 48,7 lx

*Lux distribution on a surface when lamp is mounted at 10 meters from the surface.*

## Beam details



### Beam intensities from 1-20m

1m	2m	3m	4m	5m	6m	7m	8m	9m	10m	11m	12m	13m	14m	15m	16m	17m	18m	19m	20m
3,3ft	6,6ft	9,8ft	13,1ft	16,4ft	19,7ft	23ft	26,2ft	29,5ft	32,8ft	36,1ft	39,4ft	42,7ft	45,9ft	49,2ft	52,5ft	55,8ft	59,1ft	62,3ft	65,6ft
4871lx	1218lx	541lx	304lx	195lx	135lx	99lx	76lx	60lx	49lx	40lx	34lx	29lx	25lx	22lx	19lx	17lx	15lx	13lx	12lx
452,5fc	113,1fc	50,3fcd	28,3fcd	18,1fcd	12,6fcd	9,2fcd	7,1fcd	5,6fcd	4,5fcd	3,7fcd	3,1fcd	2,7fcd	2,3fcd	2fcd	1,8fcd	1,6fcd	1,4fcd	1,3fcd	1,1fcd

### Intensities in 0° c-plane

0°	2°	4°	6°	8°	10°	12°	14°	16°	18°	20°	22°	24°	26°	28°	30°	32°	34°	36°	38°
4871	4719	4515	4255	3925	3558	3180	2804	2455	2135	1831	1543	1264	1007	791	620	494	400	333	284
100%	97%	93%	87%	81%	73%	65%	58%	50%	44%	38%	32%	26%	21%	16%	13%	10%	8%	7%	6%

### Intensities in 90° c-plane

0°	2°	4°	6°	8°	10°	12°	14°	16°	18°	20°	22°	24°	26°	28°	30°	32°	34°	36°	38°
4871	5039	4945	4761	4487	4150	3780	3380	2986	2605	2240	1913	1607	1313	1047	818	639	509	411	341
100%	103%	102%	98%	92%	85%	78%	69%	61%	53%	46%	39%	33%	27%	21%	17%	13%	10%	8%	7%

### Intensities in 180° c-plane

0°	2°	4°	6°	8°	10°	12°	14°	16°	18°	20°	22°	24°	26°	28°	30°	32°	34°	36°	38°
4871	4825	4730	4548	4294	3997	3652	3288	2922	2570	2249	1947	1653	1376	1113	889	706	564	457	375
100%	99%	97%	93%	88%	82%	75%	67%	60%	53%	46%	40%	34%	28%	23%	18%	14%	12%	9%	8%

### Intensities in 270° c-plane

0°	2°	4°	6°	8°	10°	12°	14°	16°	18°	20°	22°	24°	26°	28°	30°	32°	34°	36°	38°
4871	4863	4639	4340	3994	3629	3242	2862	2506	2176	1871	1583	1312	1065	854	678	544	442	366	309
100%	100%	95%	89%	82%	75%	67%	59%	51%	45%	38%	32%	27%	22%	18%	14%	11%	9%	8%	6%

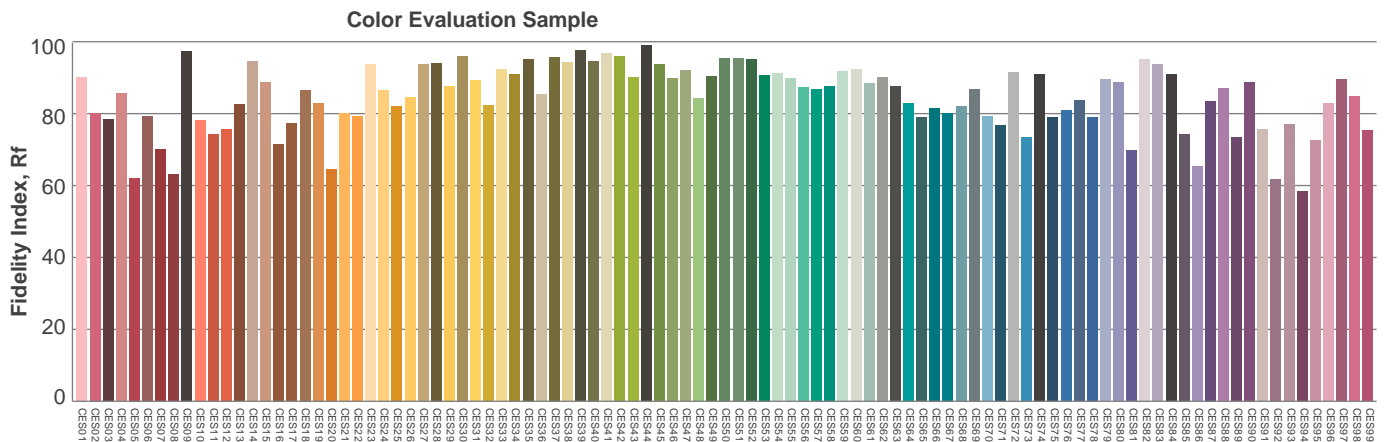
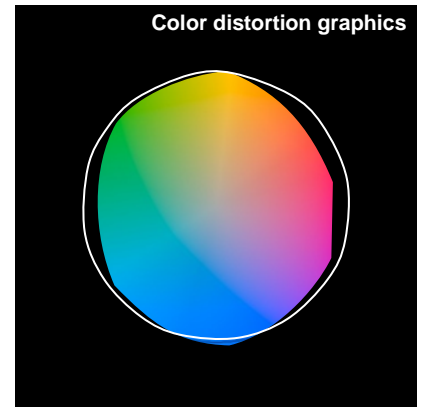
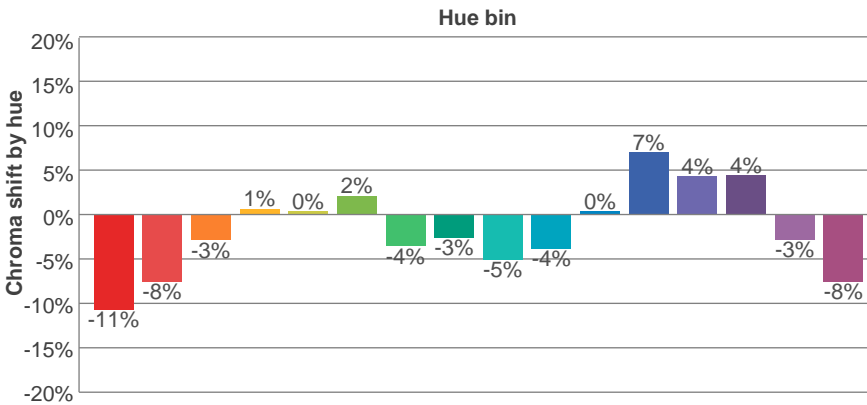
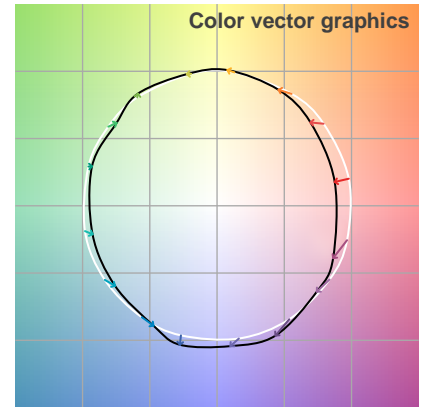
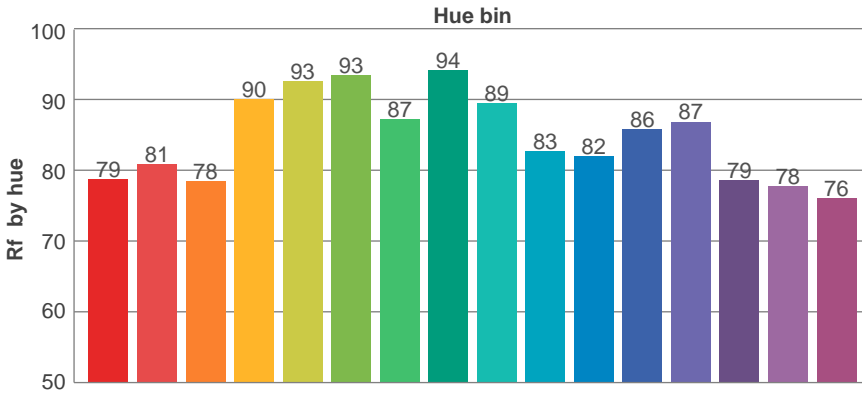
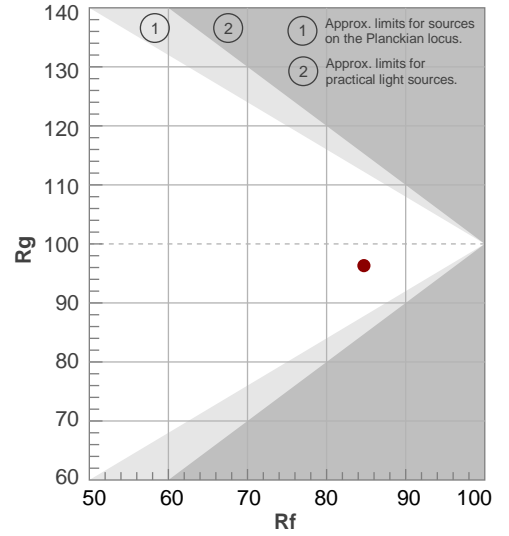
Beam angle 50%	Field angle 10%	Cutoff angle 2,5%	Intensity ratio in 120° cone	Intensity ratio in 90° cone
34,7°	67,2°	98,3°	98,6%	93,3%

## TM30 details

**Rf 84,7**  
Fidelity index Rf

**Rg 96,3**  
Gammut index Rg

Hue Bin	R <sub>f</sub>	Graphic shifts (%)	
		Chroma	Hue
1	79	-11%	0%
2	81	-8%	6%
3	78	-3%	10%
4	90	1%	5%
5	93	0%	3%
6	93	2%	-2%
7	87	-4%	-6%
8	94	-3%	-1%
9	89	-5%	3%
10	83	-4%	8%
11	82	0%	11%
12	86	7%	1%
13	87	4%	-7%
14	79	4%	-15%
15	78	-3%	-13%
16	76	-8%	-15%



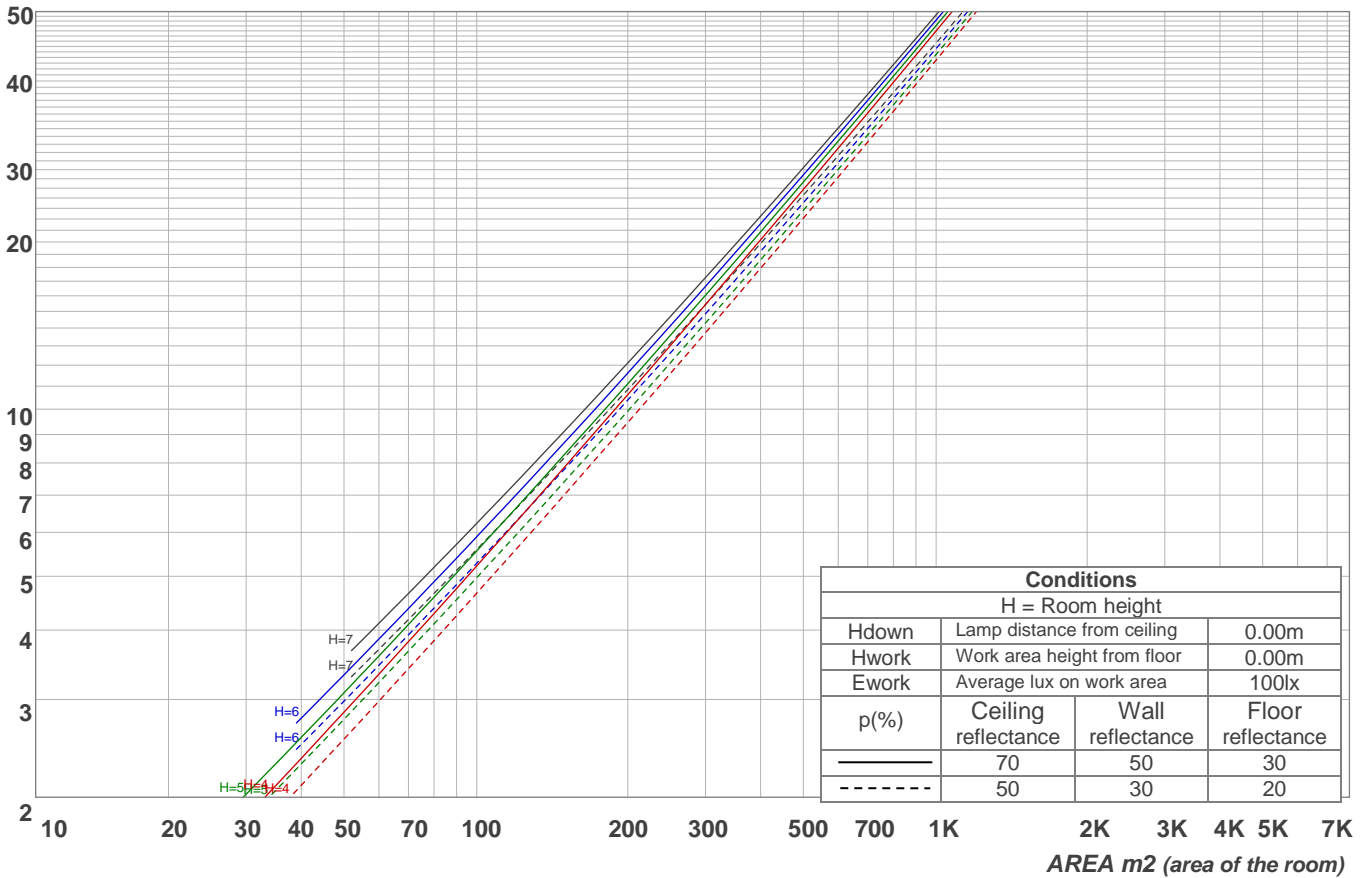
# Light planning

## Coefficients of Utilization

Ceiling reflectance	80				70				50			30			10			0			
Wall reflectance	70	50	30	10	70	50	30	10	50	30	10	50	30	10	50	30	10	0			
Floor reflectance	20	20	20	20	20	20	20	20	20	20	20	20	20	20	20	20	20	20	20	20	0
<b>RCR</b>	<b>(RCR: Room Cavity Ratio)</b>																				
	Room Values are expressed as percentage of Lumens delivered to the task surface																				
0	119	119	119	119	116	116	116	116	111	111	111	106	106	106	102	102	102	100	100	100	
1	114	111	109	107	111	109	107	105	105	103	102	101	100	99	98	97	96	94	94	94	
2	108	104	100	97	106	102	99	96	99	96	94	96	94	92	93	91	90	88	88	88	
3	103	97	93	89	101	96	92	88	93	90	87	91	88	85	89	86	84	83	83	83	
4	99	92	86	82	97	90	86	82	88	84	81	86	83	80	84	82	79	78	78	78	
5	94	86	81	77	93	85	80	77	84	79	76	82	78	75	81	77	75	73	73	73	
6	90	82	76	72	89	81	76	72	80	75	71	78	74	71	77	73	70	69	69	69	
7	86	78	72	68	85	77	72	68	76	71	68	75	70	67	73	70	67	66	66	66	
8	83	74	68	64	81	73	68	64	72	67	64	71	67	64	70	66	64	62	62	62	
9	79	70	65	61	78	70	65	61	69	64	61	68	64	61	67	63	61	59	59	59	
10	76	67	62	58	75	67	62	58	66	61	58	65	61	58	65	61	58	57	57	57	

LAMPS (number of lamps)

## Luminaire budgetary diagram

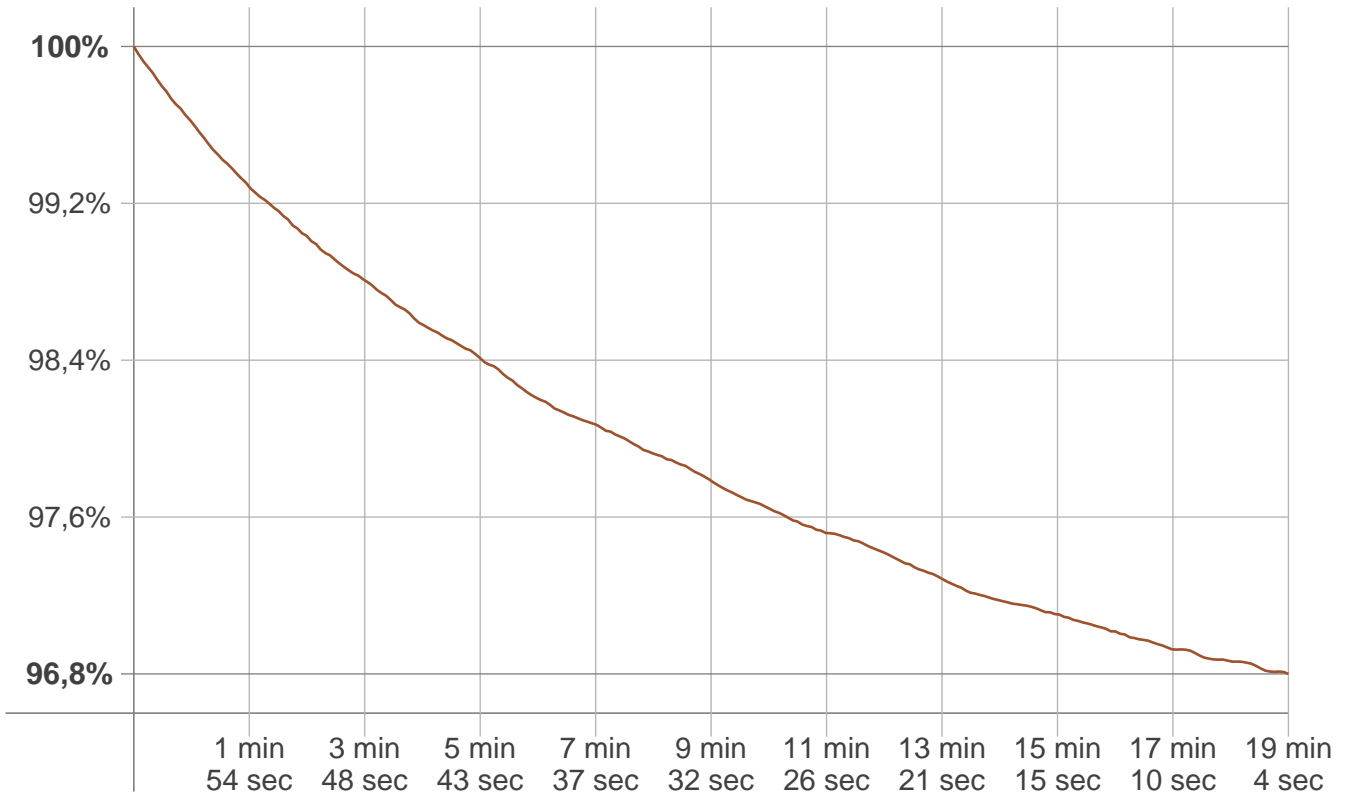


## Zonal Lumen Summary

0°-10°	10°-20°	20°-30°	30°-40°	40°-50°	50°-60°	60°-70°	70°-80°	80°-90°
412 lm	799 lm	609 lm	287 lm	143 lm	66,5 lm	26,5 lm	3,71 lm	0,265 lm
90°-100°	100°-110°	110°-120°	120°-130°	130°-140°	140°-150°	150°-160°	160°-170°	170°-180°
0,242 lm	0,242 lm	0,231 lm	0,237 lm	0,275 lm	0,307 lm	0,330 lm	0,223 lm	0,044 lm

# Stabilization

## Warmup curve



## Warmup result

Warmup time:	19 min 4 sec
Warmup variation	-3,2%

## Warmup conditions

Stable period:	15 min
Stable change max:	2,0%
Minimum time:	15 min

## Color temperature change

CCT start	CCT change	CCT end
3063 K	+17 K	3080 K

## Output change

Output start	Output change	Output end
2421 lm	-73 lm	2348 lm