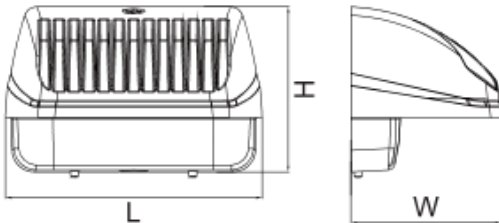




Dimensiones (mm)

Largo (L): 400; **Ancho (W):** 268
Alto (H): 205.



Código

TITÁN-120W

Descripción

Luminaria tipo aplique o "Wall-Pack". Diseñada con módulos de LED, para ubicar en pared. Compuesta por lentes ópticos el cual maximiza la distribución de la luz y un disipador en aluminio inyectado. Cada luminaria esta compuesta por 55 diodos de LED.




Materiales y acabado

Cuerpo en aluminio inyectado.
 Lentes óptico en policarbonato transparente.

Color

Café.

Características técnicas

| | | | | |
|----------------|---|---|------------------|---|
| LED |  Asimétrico |  50,000h | IP 65 | IK 08 |
| PF 0,99 | THD <10% | °C -25-40 | V 100-277 |  |

Fuente de luz

LED.

| Potencia de Salida | CRI | K | Lm / W | Lm de Salida |
|--------------------|-----|------|--------|--------------|
| 120W | >70 | 5700 | 108 | 12976 |

Características de fuente de luz

- Color temperatura disponible 5700K (frio).
- Protección contra sobretensión incorporado de 4kV.
- Opcional:
 - Fococelda
 - Batería de emergencia
 - Sensor de movimiento.

Nota: Debido a continua investigación, nos reservamos el derecho de cambiar especificaciones sin previa notificación.



Light efficiency:



Light quality:



Color temperature:



Output: 12976 lm

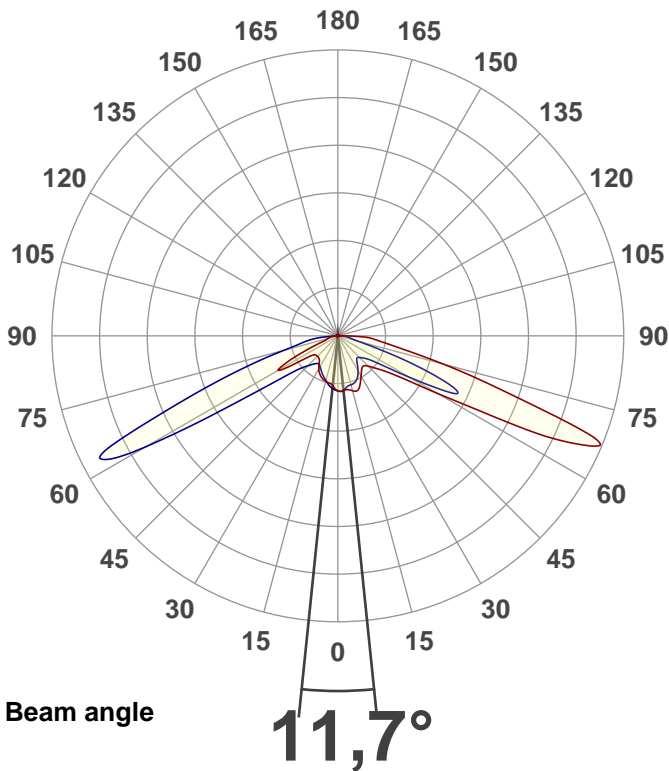
Peak: 10391 cd

Power: 120 W

PF: 0,99



Product name:
E0345-TITAN-120W



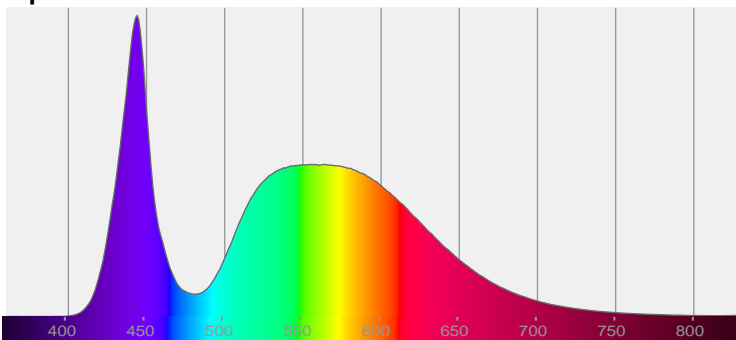
CIE 1931
x: 0,332
y: 0,341

THD Values:

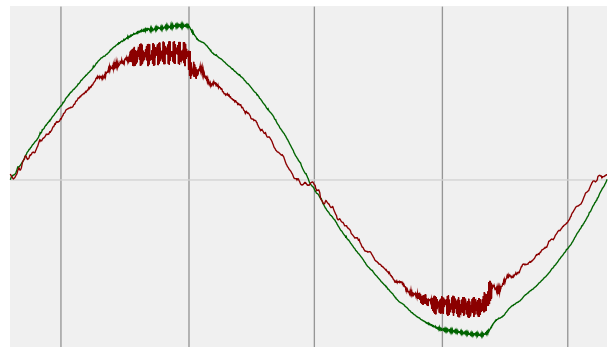
Voltage: 2,28%

Current: 5,56%

Spectra

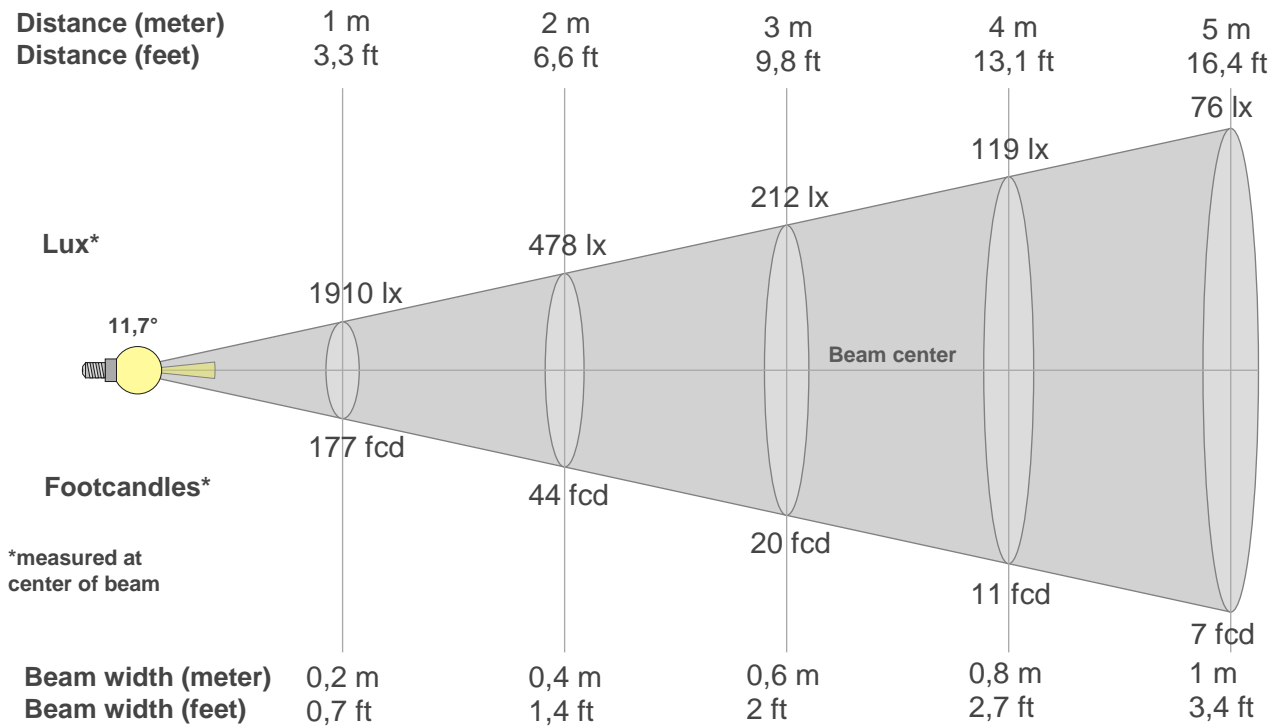


Power



Voltage: 115 V
Current: 1,05 A
Frequency: 59,9 Hz

Beam details



Beam intensities from 1-20m

| 1m | 2m | 3m | 4m | 5m | 6m | 7m | 8m | 9m | 10m | 11m | 12m | 13m | 14m | 15m | 16m | 17m | 18m | 19m | 20m |
|----------|---------|---------|---------|--------|--------|--------|--------|--------|--------|--------|--------|--------|--------|--------|--------|--------|--------|--------|--------|
| 3,3ft | 6,6ft | 9,8ft | 13,1ft | 16,4ft | 19,7ft | 23ft | 26,2ft | 29,5ft | 32,8ft | 36,1ft | 39,4ft | 42,7ft | 45,9ft | 49,2ft | 52,5ft | 55,8ft | 59,1ft | 62,3ft | 65,6ft |
| 1910lx | 478lx | 212lx | 119lx | 76lx | 53lx | 39lx | 30lx | 24lx | 19lx | 16lx | 13lx | 11lx | 10lx | 8lx | 7lx | 7lx | 6lx | 5lx | 5lx |
| 177,5fcd | 44,4fcd | 19,7fcd | 11,1fcd | 7,1fcd | 4,9fcd | 3,6fcd | 2,8fcd | 2,2fcd | 1,8fcd | 1,5fcd | 1,2fcd | 1,1fcd | 0,9fcd | 0,8fcd | 0,7fcd | 0,6fcd | 0,5fcd | 0,5fcd | 0,4fcd |

Intensities in 0° c-plane

| 0° | 5° | 10° | 15° | 20° | 25° | 30° | 35° | 40° | 45° | 50° | 55° | 60° | 65° | 70° | 75° | 80° | 85° | 90° | 95° |
|------|------|------|------|------|------|------|------|------|------|------|------|------|------|------|------|------|------|-----|-----|
| 1910 | 1926 | 1899 | 1976 | 2017 | 1838 | 1614 | 1441 | 1371 | 1490 | 1772 | 2314 | 4027 | 8662 | 7726 | 3806 | 1933 | 1240 | 272 | 7 |
| 100% | 101% | 99% | 103% | 106% | 96% | 85% | 75% | 72% | 78% | 93% | 121% | 211% | 453% | 404% | 199% | 101% | 65% | 14% | 0% |

Intensities in 90° c-plane

| 0° | 5° | 10° | 15° | 20° | 25° | 30° | 35° | 40° | 45° | 50° | 55° | 60° | 65° | 70° | 75° | 80° | 85° | 90° | 95° |
|------|------|------|------|------|------|------|------|------|------|------|------|------|------|------|-----|-----|-----|-----|-----|
| 1910 | 1912 | 1805 | 1762 | 1723 | 1608 | 1400 | 1173 | 1026 | 1063 | 1213 | 1595 | 2911 | 4575 | 2493 | 753 | 436 | 302 | 132 | 7 |
| 100% | 100% | 95% | 92% | 90% | 84% | 73% | 61% | 54% | 56% | 63% | 83% | 152% | 240% | 130% | 39% | 23% | 16% | 7% | 0% |

Intensities in 180° c-plane

| 0° | 5° | 10° | 15° | 20° | 25° | 30° | 35° | 40° | 45° | 50° | 55° | 60° | 65° | 70° | 75° | 80° | 85° | 90° | 95° |
|------|------|------|------|------|------|------|------|------|------|------|------|------|------|-----|-----|-----|-----|-----|-----|
| 1910 | 1771 | 1676 | 1633 | 1574 | 1476 | 1324 | 1125 | 1023 | 1005 | 1029 | 1347 | 2380 | 1346 | 485 | 355 | 275 | 149 | 9 | 9 |
| 100% | 93% | 88% | 85% | 82% | 77% | 69% | 59% | 54% | 53% | 54% | 71% | 125% | 70% | 25% | 19% | 14% | 8% | 0% | 0% |

Intensities in 270° c-plane

| 0° | 5° | 10° | 15° | 20° | 25° | 30° | 35° | 40° | 45° | 50° | 55° | 60° | 65° | 70° | 75° | 80° | 85° | 90° | 95° |
|------|------|------|------|------|------|------|------|------|------|------|------|------|------|------|------|------|-----|-----|-----|
| 1910 | 1854 | 1753 | 1605 | 1481 | 1353 | 1237 | 1186 | 1275 | 1470 | 1840 | 3174 | 7691 | 7918 | 4073 | 1948 | 1165 | 524 | 9 | 8 |
| 100% | 97% | 92% | 84% | 78% | 71% | 65% | 62% | 67% | 77% | 96% | 166% | 403% | 415% | 213% | 102% | 61% | 27% | 0% | 0% |

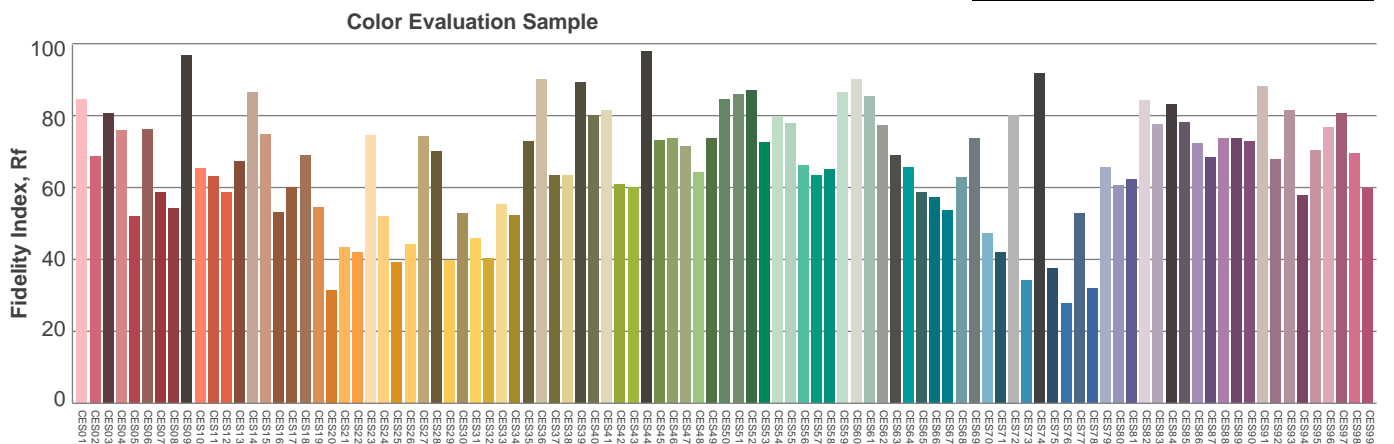
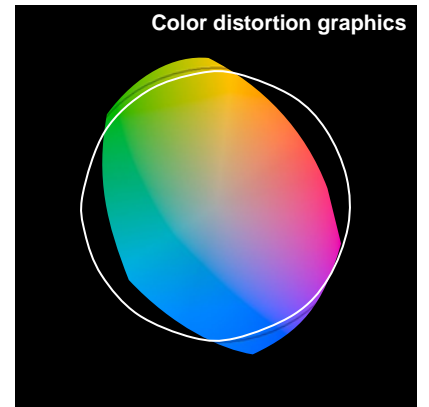
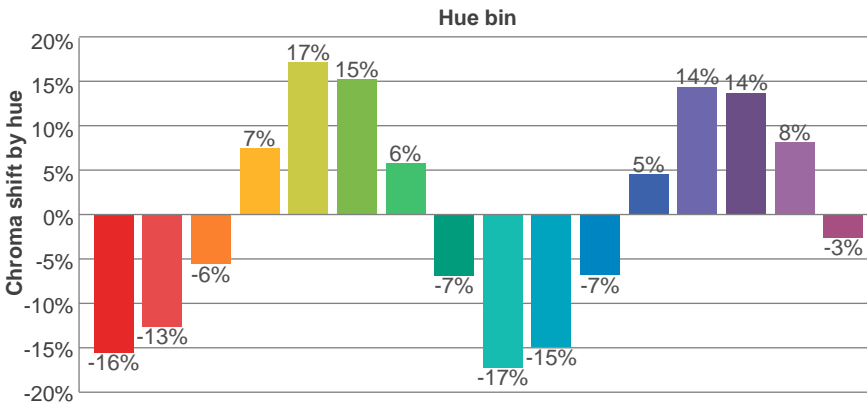
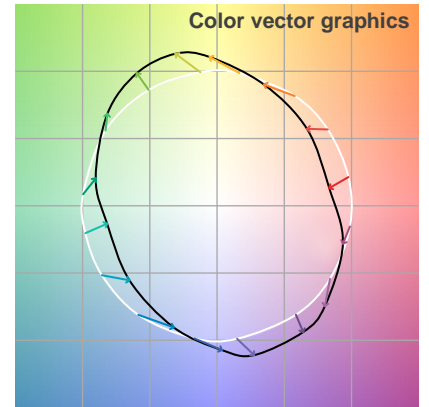
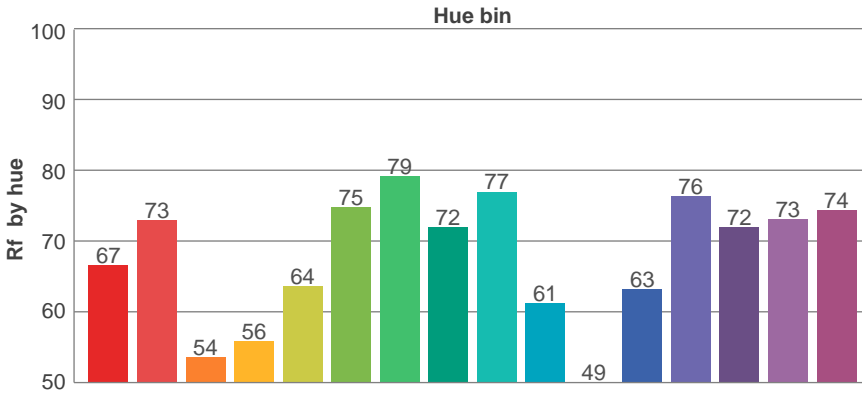
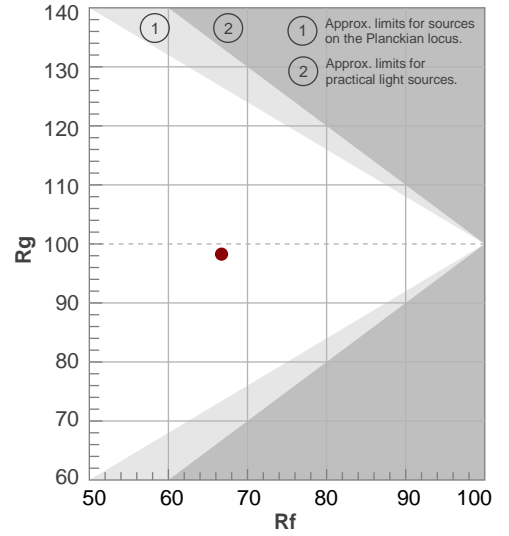
| Beam angle 50% | Field angle 10% | Cutoff angle 2,5% | Intensity ratio in 120° cone | Intensity ratio in 90° cone |
|----------------|-----------------|-------------------|------------------------------|-----------------------------|
| 11,7° | 153,9° | 172,1° | 40,4% | 20,4% |

TM30 details

Rf 66,7
Fidelity index Rf

Rg 98,3
Gammut index Rg

| Hue Bin | R _f | Graphic shifts (%) | |
|---------|----------------|--------------------|------|
| | | Chroma | Hue |
| 1 | 67 | -16% | -5% |
| 2 | 73 | -13% | 9% |
| 3 | 54 | -6% | 24% |
| 4 | 56 | 7% | 24% |
| 5 | 64 | 17% | 16% |
| 6 | 75 | 15% | 0% |
| 7 | 79 | 6% | -11% |
| 8 | 72 | -7% | -13% |
| 9 | 77 | -17% | -4% |
| 10 | 61 | -15% | 15% |
| 11 | 49 | -7% | 27% |
| 12 | 63 | 5% | 22% |
| 13 | 76 | 14% | 10% |
| 14 | 72 | 14% | -3% |
| 15 | 73 | 8% | -19% |
| 16 | 74 | -3% | -14% |



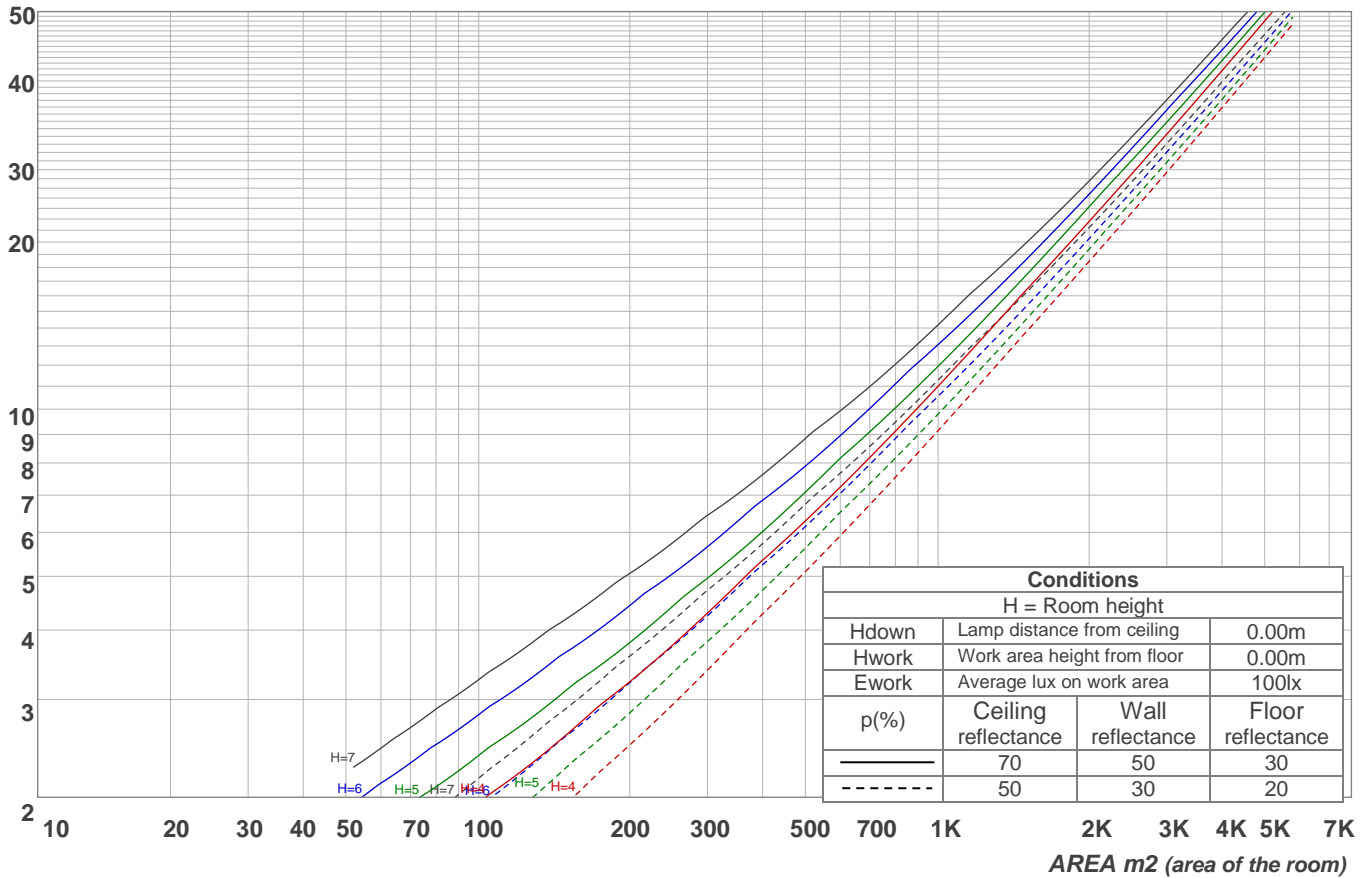
Light planning

Coefficients of Utilization

| Ceiling reflectance | 80 | | | | 70 | | | | 50 | | | 30 | | | 10 | | | 0 |
|---------------------|---|-----|-----|-----|-----|-----|-----|-----|-----|-----|-----|-----|-----|-----|-----|-----|-----|-----|
| Wall reflectance | 70 | 50 | 30 | 10 | 70 | 50 | 30 | 10 | 50 | 30 | 10 | 50 | 30 | 10 | 50 | 30 | 10 | 0 |
| Floor reflectance | 20 | 20 | 20 | 20 | 20 | 20 | 20 | 20 | 20 | 20 | 20 | 20 | 20 | 20 | 20 | 20 | 20 | 0 |
| RCR | (RCR: Room Cavity Ratio) | | | | | | | | | | | | | | | | | |
| | Room Values are expressed as percentage of Lumens delivered to the task surface | | | | | | | | | | | | | | | | | |
| 0 | 119 | 119 | 119 | 119 | 116 | 116 | 116 | 116 | 111 | 111 | 111 | 106 | 106 | 106 | 102 | 102 | 102 | 100 |
| 1 | 103 | 96 | 90 | 84 | 100 | 94 | 88 | 83 | 89 | 85 | 80 | 85 | 81 | 77 | 81 | 78 | 75 | 73 |
| 2 | 90 | 78 | 68 | 60 | 87 | 76 | 67 | 59 | 72 | 64 | 58 | 68 | 62 | 56 | 65 | 59 | 55 | 52 |
| 3 | 79 | 64 | 53 | 44 | 76 | 62 | 52 | 44 | 59 | 50 | 43 | 56 | 48 | 42 | 53 | 46 | 41 | 38 |
| 4 | 70 | 54 | 43 | 34 | 67 | 53 | 42 | 33 | 50 | 40 | 33 | 47 | 39 | 32 | 45 | 37 | 31 | 29 |
| 5 | 63 | 47 | 35 | 27 | 61 | 45 | 35 | 26 | 43 | 33 | 26 | 41 | 32 | 26 | 38 | 31 | 25 | 22 |
| 6 | 57 | 41 | 30 | 22 | 55 | 40 | 29 | 22 | 38 | 28 | 21 | 36 | 27 | 21 | 34 | 26 | 21 | 18 |
| 7 | 53 | 36 | 26 | 18 | 51 | 35 | 25 | 18 | 34 | 25 | 18 | 32 | 24 | 18 | 30 | 23 | 17 | 15 |
| 8 | 49 | 33 | 23 | 16 | 47 | 32 | 22 | 16 | 31 | 22 | 15 | 29 | 21 | 15 | 28 | 21 | 15 | 13 |
| 9 | 46 | 30 | 20 | 14 | 44 | 29 | 20 | 14 | 28 | 20 | 14 | 27 | 19 | 13 | 26 | 18 | 13 | 11 |
| 10 | 43 | 27 | 18 | 12 | 41 | 27 | 18 | 12 | 26 | 18 | 12 | 25 | 17 | 12 | 24 | 17 | 12 | 10 |

LAMPS (number of lamps)

Luminaire budgetary diagram

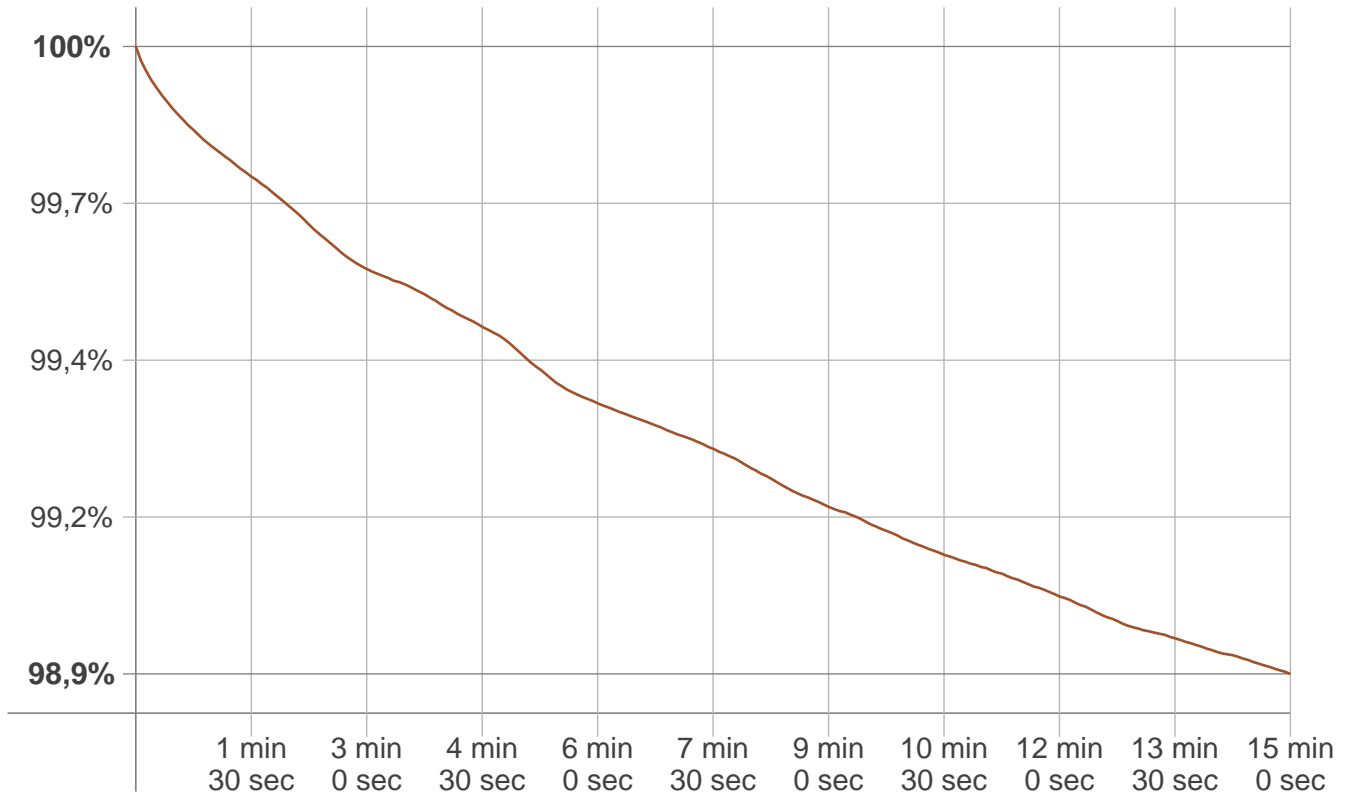


Zonal Lumen Summary

| | | | | | | | | |
|----------|-----------|-----------|-----------|-----------|-----------|-----------|-----------|-----------|
| 0°-10° | 10°-20° | 20°-30° | 30°-40° | 40°-50° | 50°-60° | 60°-70° | 70°-80° | 80°-90° |
| 175 lm | 500 lm | 732 lm | 797 lm | 995 lm | 2045 lm | 4875 lm | 2202 lm | 599 lm |
| 90°-100° | 100°-110° | 110°-120° | 120°-130° | 130°-140° | 140°-150° | 150°-160° | 160°-170° | 170°-180° |
| 19,6 lm | 7,54 lm | 6,80 lm | 6,47 lm | 5,64 lm | 4,60 lm | 3,32 lm | 1,97 lm | 0,665 lm |

Stabilization

Warmup curve



Warmup result

| | |
|------------------|--------------|
| Warmup time: | 15 min 0 sec |
| Warmup variation | -1,1% |

Warmup conditions

| | |
|--------------------|--------|
| Stable period: | 15 min |
| Stable change max: | 2,0% |
| Minimum time: | 15 min |

Color temperature change

| CCT start | CCT change | CCT end |
|-----------|------------|---------|
| 5531 K | -3 K | 5528 K |

Output change

| Output start | Output change | Output end |
|--------------|---------------|------------|
| 13110 lm | -134 lm | 12976 lm |