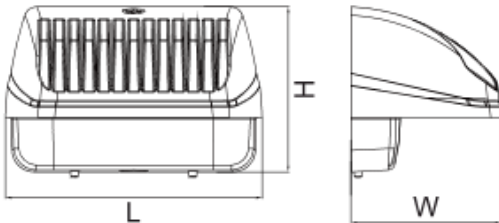




Dimensiones (mm)

**Largo (L):** 209; **Ancho (W):** 122  
**Alto (H):** 134.



**Código**

**TITÁN-24W**

**Descripción**

Luminaria tipo aplique o "Wall-Pack". Diseñada con módulos de LED, para ubicar en pared. Compuesta por lentes ópticos el cual maximiza la distribución de la luz y un disipador en aluminio inyectado. Cada luminaria esta compuesta por 10 diodos de LED.




**Materiales y acabado**

Cuerpo en aluminio inyectado.  
 Lentes óptico en policarbonato transparente.

**Color**

Café.

**Características técnicas**

<b>LED</b>	 Asimétrico	 50,000h	<b>IP 65</b>	<b>IK 08</b>
<b>PF 0,99</b>	<b>THD 10%</b>	<b>°C -25-40</b>	<b>V 100-277</b>	

**Fuente de luz**

LED.

Potencia de Salida	CRI	K	Lm / W	Lm de Salida
24,2W	>70	5700	103	2506

**Características de fuente de luz**

- Color temperatura disponible 5700K (frio).
- Protección contra sobretensión incorporado de 4kV.
- Opcional:
  - Fococelda
  - Batería de emergencia
  - Sensor de movimiento.

Nota: Debido a continua investigación, nos reservamos el derecho de cambiar especificaciones sin previa notificación.



Light efficiency:



Light quality:



Color temperature:



Output: 2506 lm

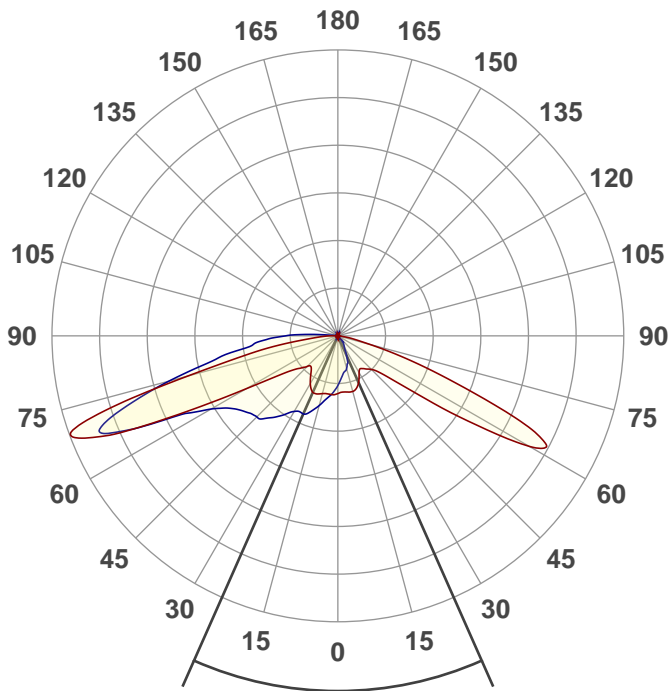
Peak: 2104 cd

Power: 24,2 W

PF: 0,99



Product name:  
E0340-TITAN-24W



Beam angle  
**47,8°**



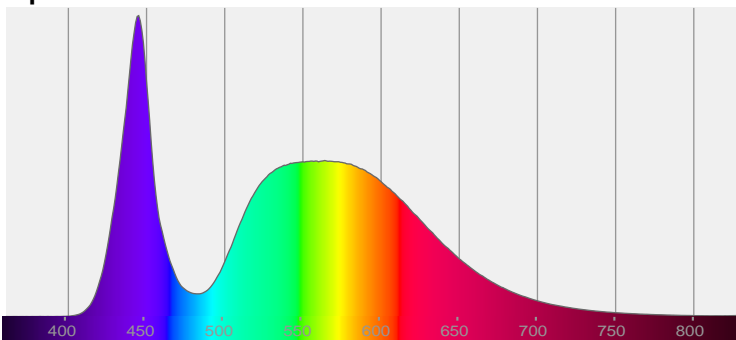
CIE 1931  
x: 0,333  
y: 0,341

THD Values:

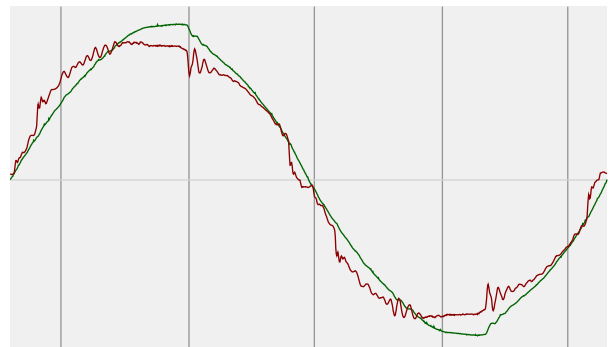
Voltage: 2,49%

Current: 10,3%

Spectra

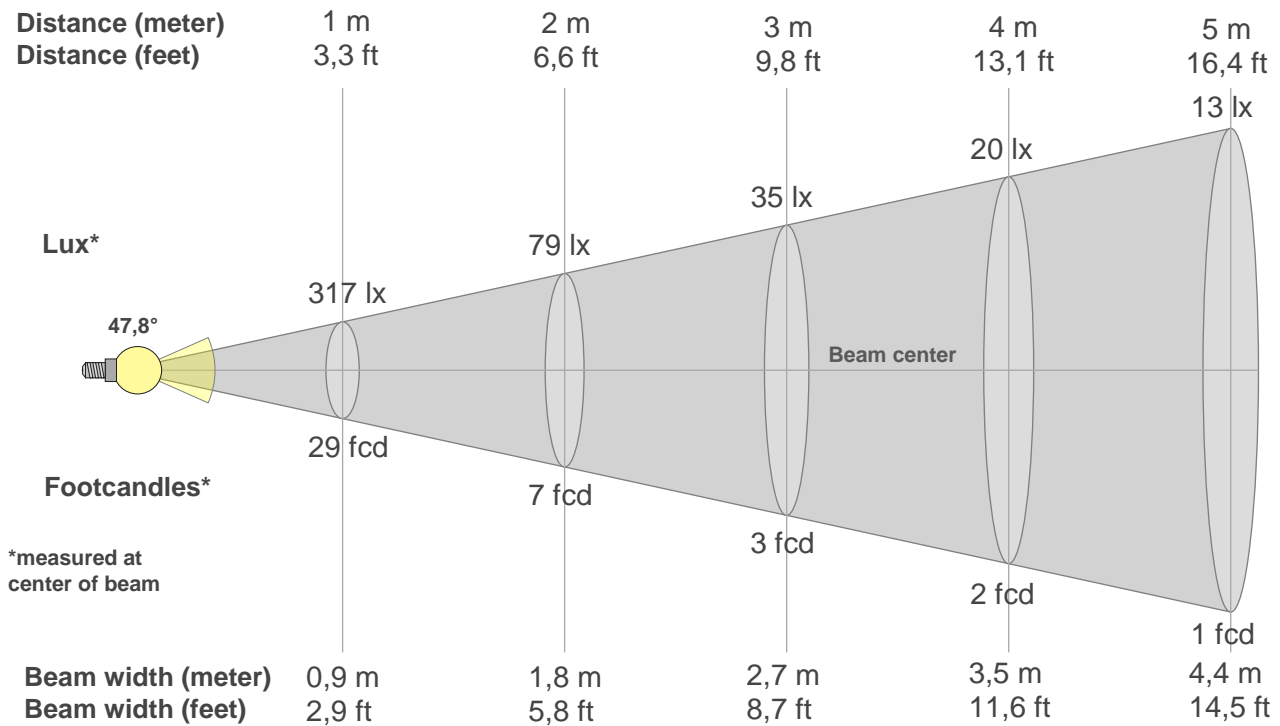


Power



Voltage: 116 V  
Current: 0,211 A  
Frequency: 60 Hz

## Beam details



### Beam intensities from 1-20m

1m	2m	3m	4m	5m	6m	7m	8m	9m	10m	11m	12m	13m	14m	15m	16m	17m	18m	19m	20m
3,3ft	6,6ft	9,8ft	13,1ft	16,4ft	19,7ft	23ft	26,2ft	29,5ft	32,8ft	36,1ft	39,4ft	42,7ft	45,9ft	49,2ft	52,5ft	55,8ft	59,1ft	62,3ft	65,6ft
317lx	79lx	35lx	20lx	13lx	9lx	6lx	5lx	4lx	3lx	3lx	2lx	2lx	2lx	1lx	1lx	1lx	1lx	1lx	1lx
29,5fcd	7,4fcd	3,3fcd	1,8fcd	1,2fcd	0,8fcd	0,6fcd	0,5fcd	0,4fcd	0,3fcd	0,2fcd	0,2fcd	0,2fcd	0,2fcd	0,1fcd	0,1fcd	0,1fcd	0,1fcd	0,1fcd	0,1fcd

### Intensities in 0° c-plane

0°	5°	10°	15°	20°	25°	30°	35°	40°	45°	50°	55°	60°	65°	70°	75°	80°	85°	90°	95°
317	321	324	327	314	282	242	227	246	270	351	687	1253	1137	546	190	70	7	0	0
100%	101%	102%	103%	99%	89%	76%	72%	77%	85%	111%	217%	395%	358%	172%	60%	22%	2%	0%	0%

### Intensities in 90° c-plane

0°	5°	10°	15°	20°	25°	30°	35°	40°	45°	50°	55°	60°	65°	70°	75°	80°	85°	90°	95°
317	238	209	192	165	110	75	58	38	4	2	0	0	0	0	0	0	0	0	1
100%	75%	66%	61%	52%	35%	24%	18%	12%	1%	1%	0%	0%	0%	0%	0%	0%	0%	0%	0%

### Intensities in 180° c-plane

0°	5°	10°	15°	20°	25°	30°	35°	40°	45°	50°	55°	60°	65°	70°	75°	80°	85°	90°	95°
317	336	335	340	351	348	313	269	236	246	288	368	602	1199	1612	888	412	140	46	2
100%	106%	106%	107%	111%	110%	99%	85%	74%	77%	91%	116%	190%	378%	508%	280%	130%	44%	14%	1%

### Intensities in 270° c-plane

0°	5°	10°	15°	20°	25°	30°	35°	40°	45°	50°	55°	60°	65°	70°	75°	80°	85°	90°	95°
317	325	362	410	460	485	497	552	609	652	676	723	834	1212	1386	995	674	472	297	46
100%	103%	114%	129%	145%	153%	157%	174%	192%	206%	213%	228%	263%	382%	437%	314%	213%	149%	94%	14%

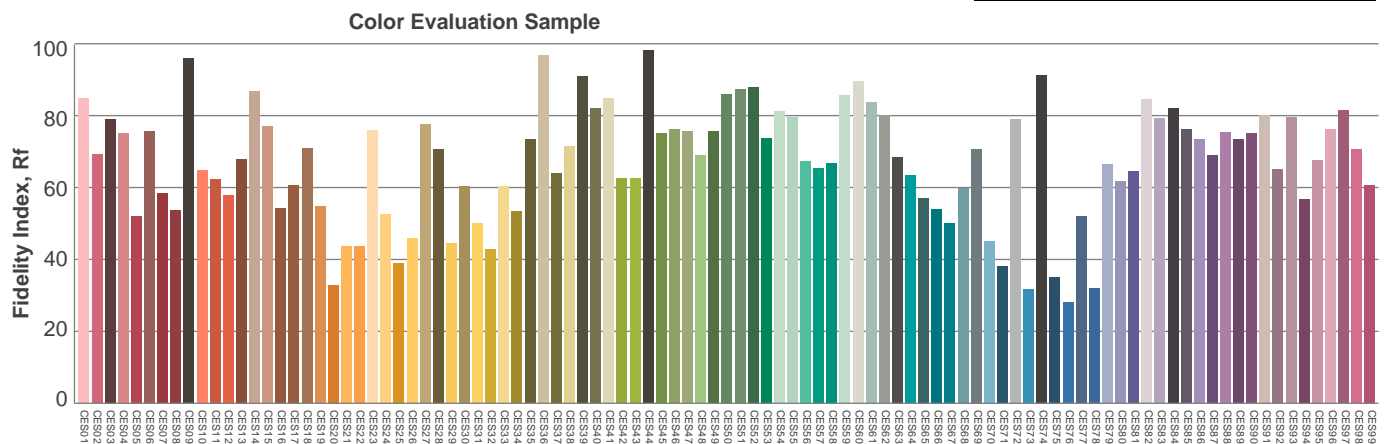
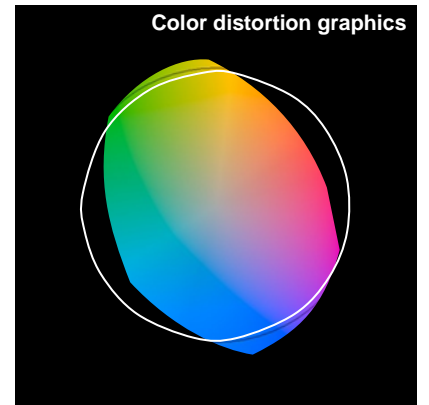
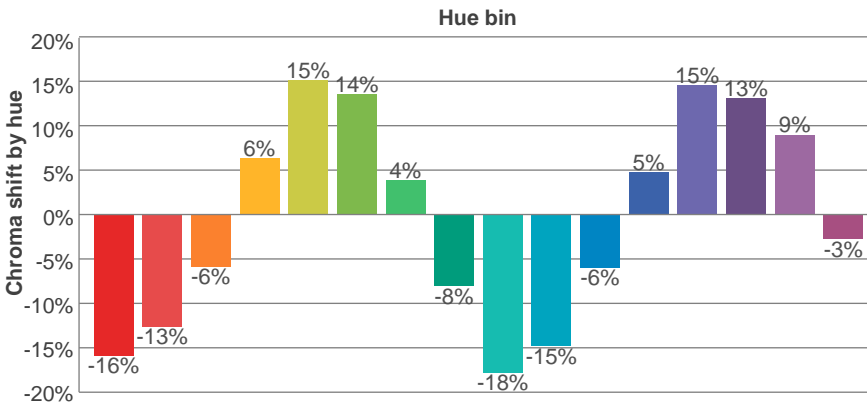
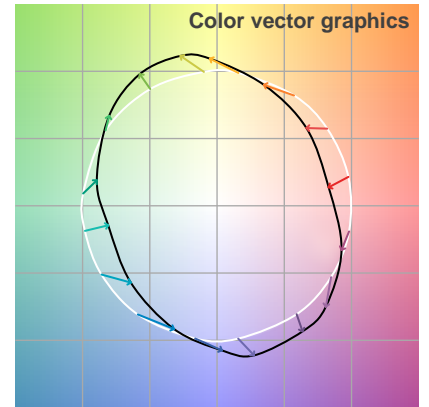
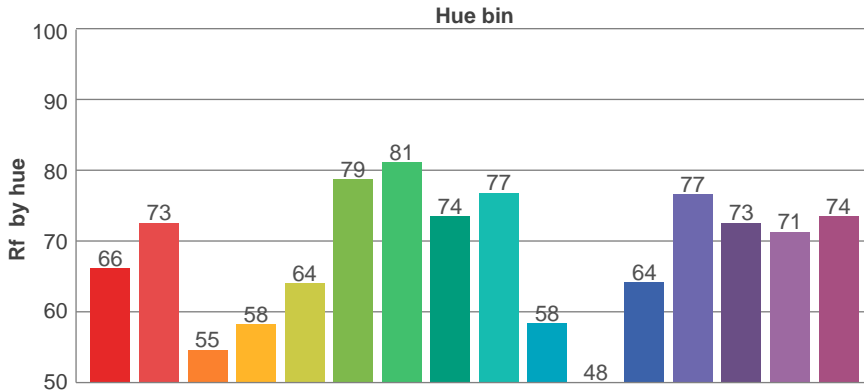
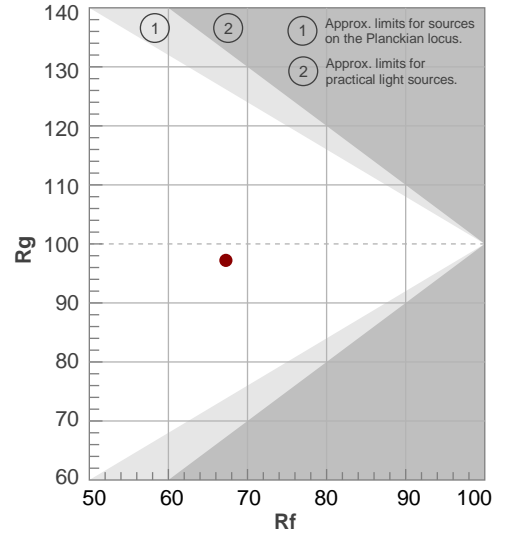
Beam angle 50%	Field angle 10%	Cutoff angle 2,5%	Intensity ratio in 120° cone	Intensity ratio in 90° cone
47,8°	123,8°	149,1°	40,8%	22,0%

## TM30 details

**Rf 67,3**  
Fidelity index Rf

**Rg 97,2**  
Gammut index Rg

Hue Bin	R <sub>f</sub>	Graphic shifts (%)	
		Chroma	Hue
1	66	-16%	-5%
2	73	-13%	9%
3	55	-6%	23%
4	58	6%	23%
5	64	15%	15%
6	79	14%	0%
7	81	4%	-10%
8	74	-8%	-12%
9	77	-18%	-1%
10	58	-15%	17%
11	48	-6%	28%
12	64	5%	21%
13	77	15%	9%
14	73	13%	-3%
15	71	9%	-20%
16	74	-3%	-15%



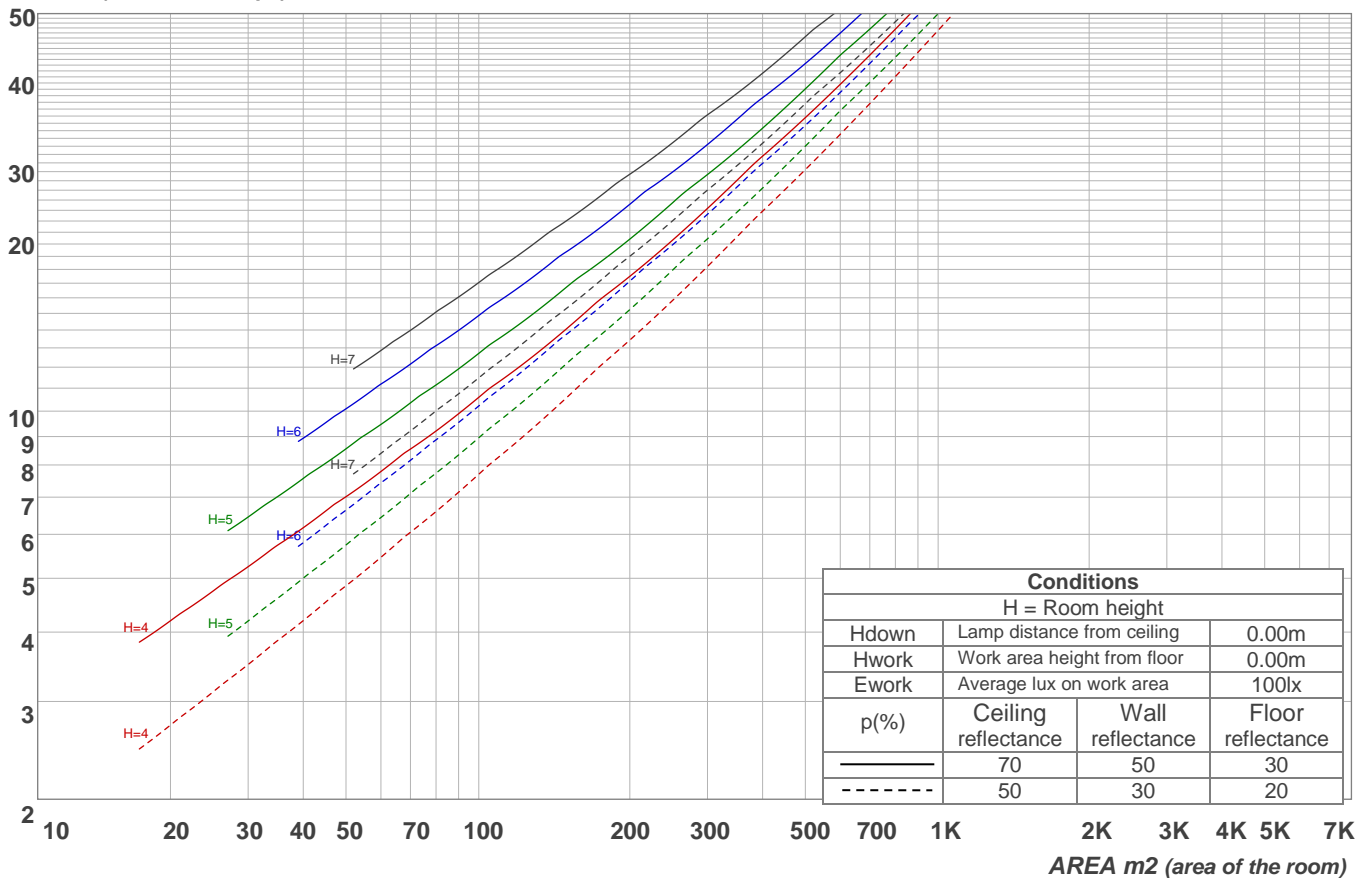
# Light planning

## Coefficients of Utilization

Ceiling reflectance	80				70				50			30			10			0
Wall reflectance	70	50	30	10	70	50	30	10	50	30	10	50	30	10	50	30	10	0
Floor reflectance	20	20	20	20	20	20	20	20	20	20	20	20	20	20	20	20	20	0
RCR	(RCR: Room Cavity Ratio) Room Values are expressed as percentage of Lumens delivered to the task surface																	
0	119	119	119	119	116	116	116	116	111	111	111	106	106	106	101	101	101	99
1	102	95	88	82	99	92	86	81	88	83	78	83	79	75	79	76	73	70
2	89	77	67	58	85	74	65	57	70	63	56	67	60	54	63	58	53	50
3	78	63	52	43	75	61	51	42	58	49	41	55	47	40	52	45	39	37
4	70	54	42	33	67	52	41	33	49	40	32	46	38	31	44	37	31	28
5	63	47	35	27	60	45	34	26	43	33	26	40	32	25	38	31	25	22
6	57	41	30	22	55	40	29	22	38	28	21	36	27	21	34	27	21	18
7	53	37	26	19	51	36	26	18	34	25	18	32	24	18	31	23	18	15
8	49	33	23	16	47	32	23	16	31	22	16	29	21	16	28	21	15	13
9	46	30	21	14	44	29	20	14	28	20	14	27	19	14	26	19	14	11
10	43	28	19	13	41	27	18	13	26	18	12	25	18	12	24	17	12	10

LAMPS (number of lamps)

### Luminaire budgetary diagram

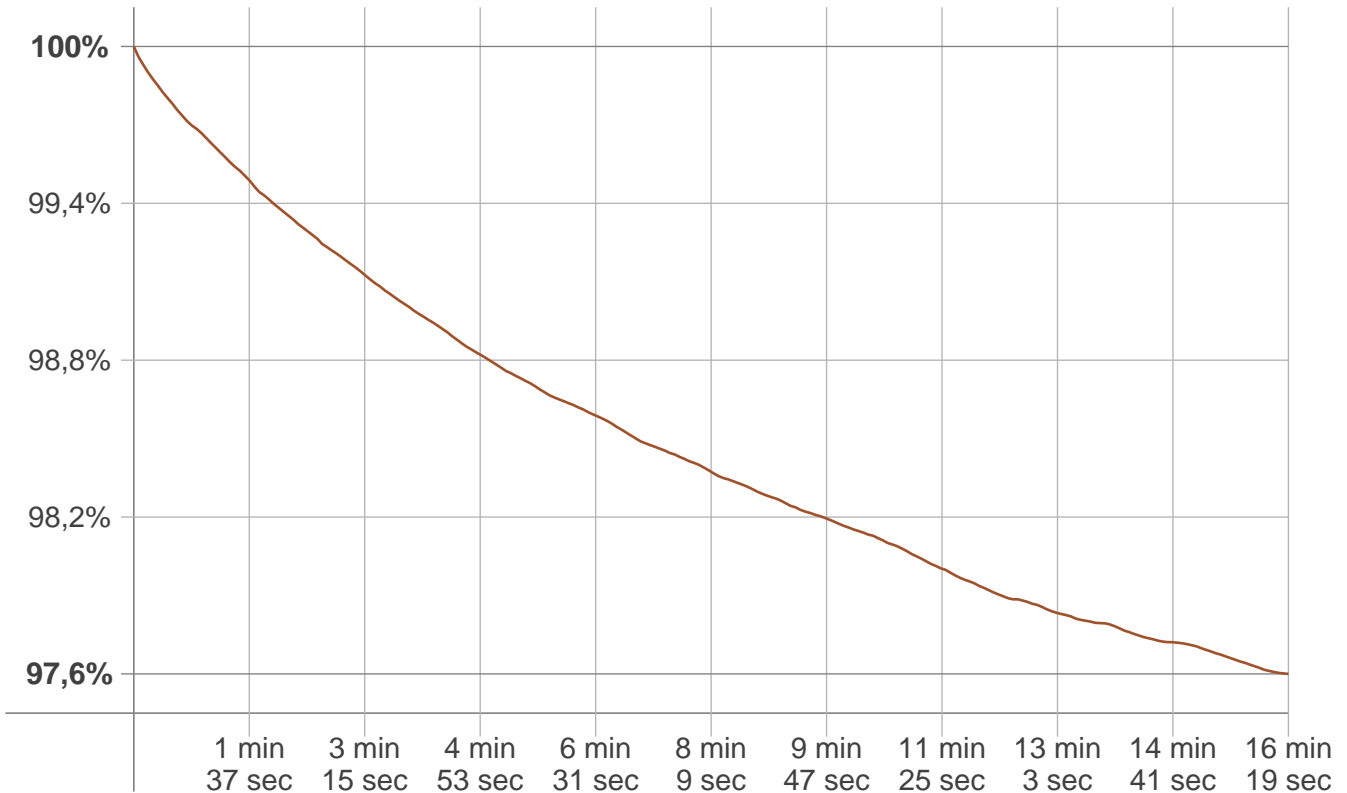


### Zonal Lumen Summary

0°-10°	10°-20°	20°-30°	30°-40°	40°-50°	50°-60°	60°-70°	70°-80°	80°-90°
30,4 lm	94,0 lm	149 lm	176 lm	219 lm	354 lm	732 lm	580 lm	150 lm
90°-100°	100°-110°	110°-120°	120°-130°	130°-140°	140°-150°	150°-160°	160°-170°	170°-180°
19,5 lm	0,615 lm	0,394 lm	0,302 lm	0,217 lm	0,150 lm	0,097 lm	0,057 lm	0,019 lm

# Stabilization

Warmup curve



Warmup result

Warmup time:	16 min 19 sec
Warmup variation	-2,4%

Warmup conditions

Stable period:	15 min
Stable change max:	2,0%
Minimum time:	15 min

Color temperature change

CCT start	CCT change	CCT end
5460 K	+10 K	5470 K

Output change

Output start	Output change	Output end
2564 lm	-58 lm	2506 lm