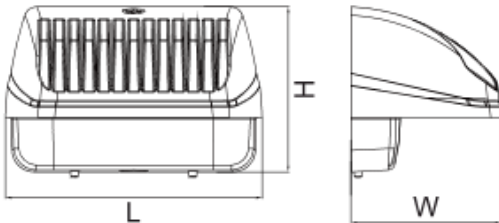




Dimensiones (mm)

Largo (L): 257; Ancho (W): 160
Alto (H): 140.



Código

TITÁN-42W

Descripción

Luminaria tipo aplique o "Wall-Pack". Diseñada con módulos de LED, para ubicar en pared. Compuesta por lentes ópticos el cual maximiza la distribución de la luz y un disipador en aluminio inyectado. Cada luminaria esta compuesta por 18 diodos de LED.




Materiales y acabado

Cuerpo en aluminio inyectado.
 Lentes óptico en policarbonato transparente.

Color

Café.

Características técnicas

LED	 Asimétrico	 50,000h	IP 65	IK 08
PF 0,99	THD <15%	°C -25-40	V 100-277	

Fuente de luz

LED.

Potencia de Salida	CRI	K	Lm / W	Lm de Salida
42,3W	>70	5700	97	4115

Características de fuente de luz

- Color temperatura disponible 5700K (frio).
- Protección contra sobretensión incorporado de 4kV.
- Opcional:
 - Fotocelda
 - Batería de emergencia
 - Sensor de movimiento.

Nota: Debido a continua investigación, nos reservamos el derecho de cambiar especificaciones sin previa notificación.



Light efficiency:



Light quality:



Color temperature:



Output: 4115 lm

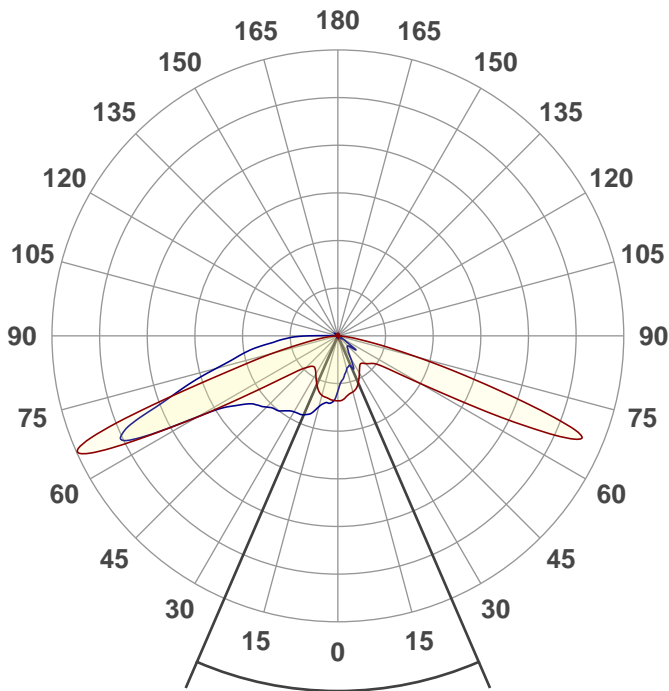
Peak: 3244 cd

Power: 42,3 W

PF: 0,99



Product name:
E0343-TITAN-42W



Beam angle

46,7°



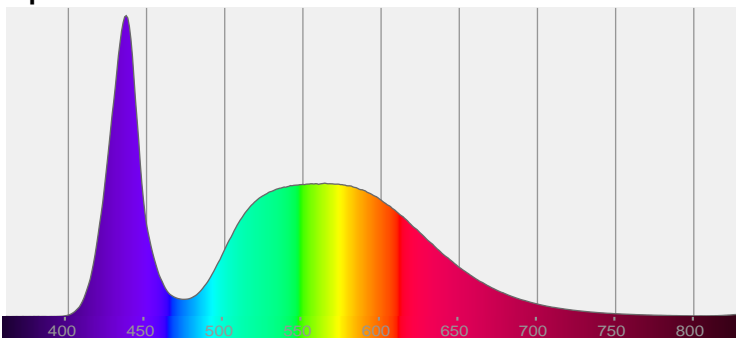
CIE 1931
x: 0,329
y: 0,337

THD Values:

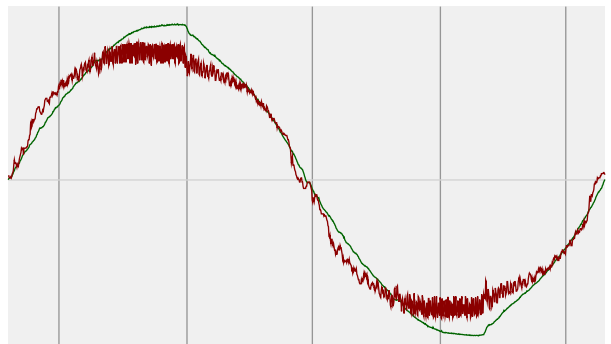
Voltage: 2,42%

Current: 11,43%

Spectra

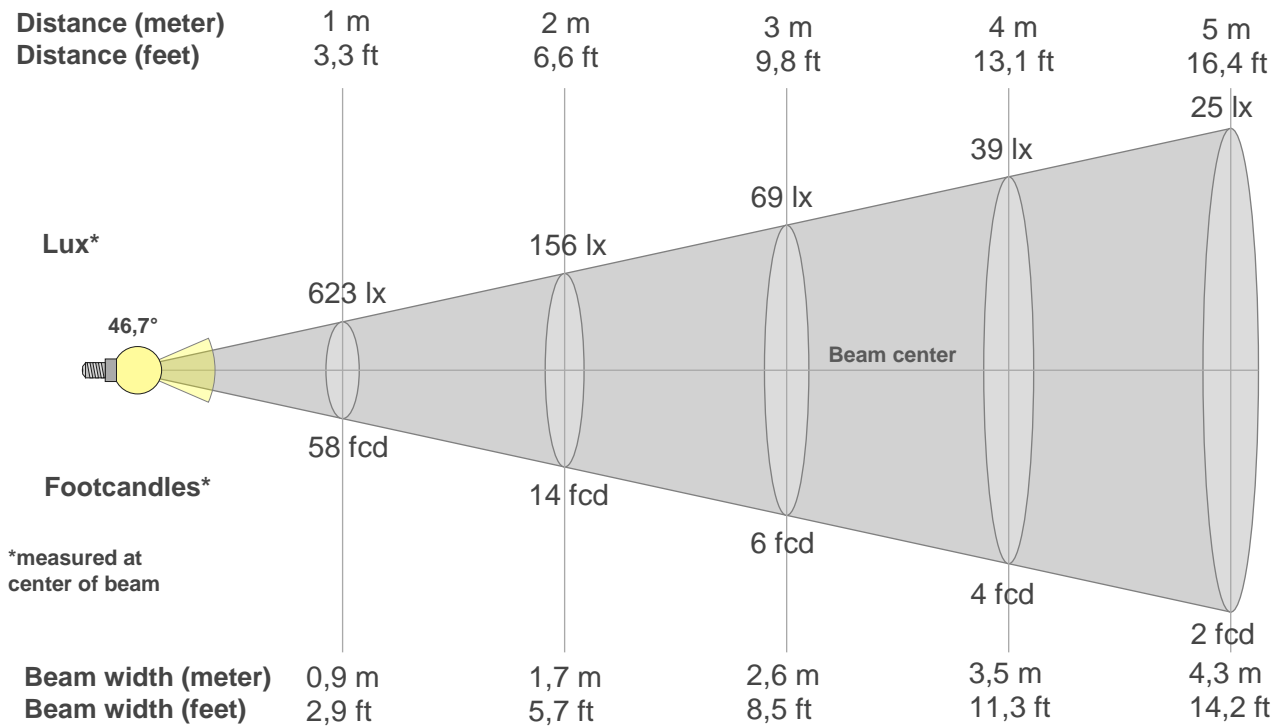


Power



Voltage: 114 V
Current: 0,376 A
Frequency: 60 Hz

Beam details



Beam intensities from 1-20m

1m	2m	3m	4m	5m	6m	7m	8m	9m	10m	11m	12m	13m	14m	15m	16m	17m	18m	19m	20m
3,3ft	6,6ft	9,8ft	13,1ft	16,4ft	19,7ft	23ft	26,2ft	29,5ft	32,8ft	36,1ft	39,4ft	42,7ft	45,9ft	49,2ft	52,5ft	55,8ft	59,1ft	62,3ft	65,6ft
623lx	156lx	69lx	39lx	25lx	17lx	13lx	10lx	8lx	6lx	5lx	4lx	4lx	3lx	3lx	2lx	2lx	2lx	2lx	2lx
57,9fcd	14,5fcd	6,4fcd	3,6fcd	2,3fcd	1,6fcd	1,2fcd	0,9fcd	0,7fcd	0,6fcd	0,5fcd	0,4fcd	0,3fcd	0,3fcd	0,3fcd	0,2fcd	0,2fcd	0,2fcd	0,2fcd	0,1fcd

Intensities in 0° c-plane

0°	5°	10°	15°	20°	25°	30°	35°	40°	45°	50°	55°	60°	65°	70°	75°	80°	85°	90°	95°
623	643	604	585	555	497	434	383	364	396	433	519	967	2289	2126	833	253	66	3	1
100%	103%	97%	94%	89%	80%	70%	62%	58%	64%	70%	83%	155%	367%	341%	134%	41%	11%	0%	0%

Intensities in 90° c-plane

0°	5°	10°	15°	20°	25°	30°	35°	40°	45°	50°	55°	60°	65°	70°	75°	80°	85°	90°	95°
623	454	396	346	323	368	256	183	147	143	198	106	48	3	0	0	1	1	1	1
100%	73%	64%	56%	52%	59%	41%	29%	24%	23%	32%	17%	8%	0%	0%	0%	0%	0%	0%	0%

Intensities in 180° c-plane

0°	5°	10°	15°	20°	25°	30°	35°	40°	45°	50°	55°	60°	65°	70°	75°	80°	85°	90°	95°
623	650	634	621	579	511	445	401	401	454	577	885	1647	2799	1810	688	243	69	3	1
100%	104%	102%	100%	93%	82%	71%	64%	64%	73%	93%	142%	264%	449%	291%	110%	39%	11%	0%	0%

Intensities in 270° c-plane

0°	5°	10°	15°	20°	25°	30°	35°	40°	45°	50°	55°	60°	65°	70°	75°	80°	85°	90°	95°
623	673	683	740	839	876	885	923	972	1015	1080	1217	1634	2411	1792	1273	940	623	296	2
100%	108%	110%	119%	135%	141%	142%	148%	156%	163%	173%	195%	262%	387%	288%	204%	151%	100%	47%	0%

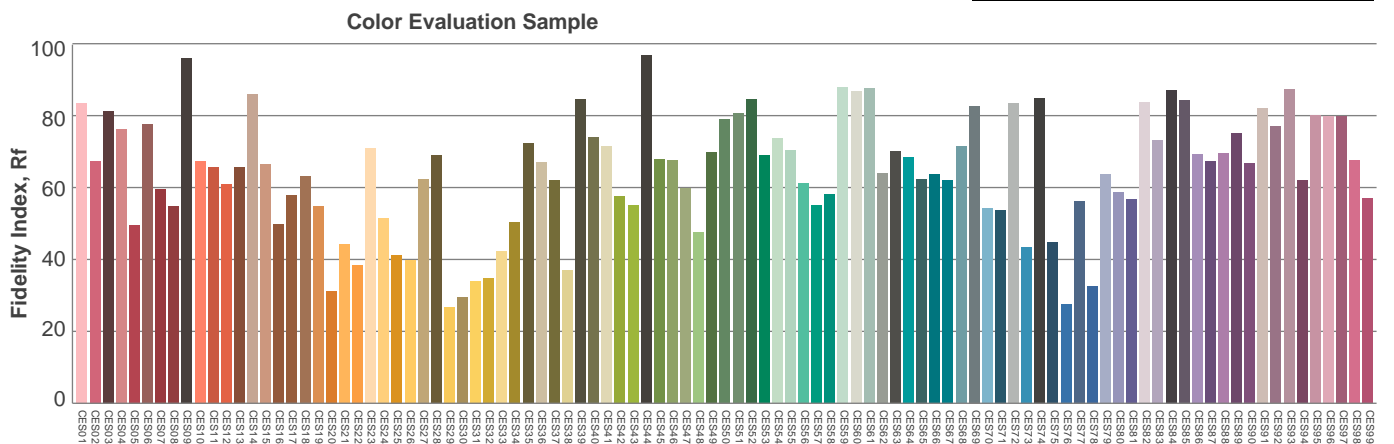
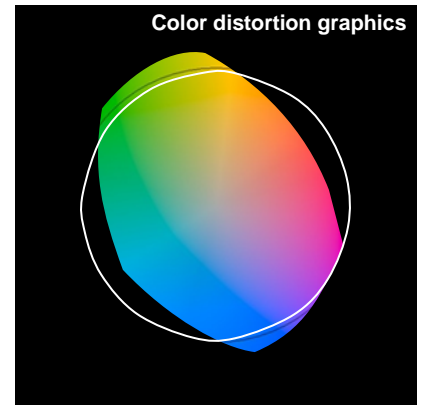
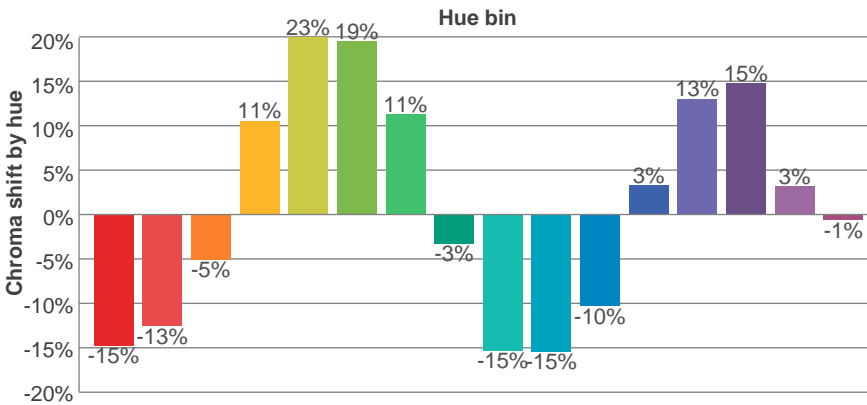
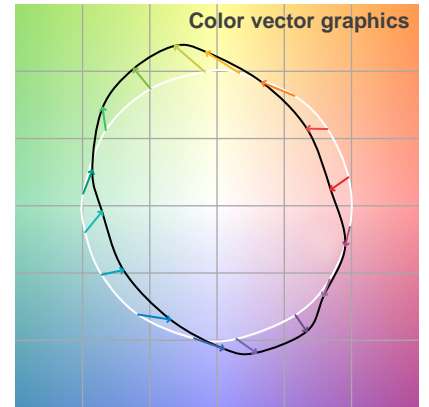
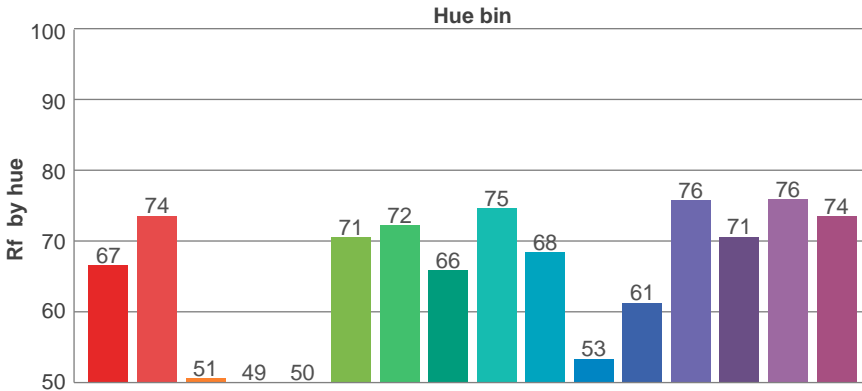
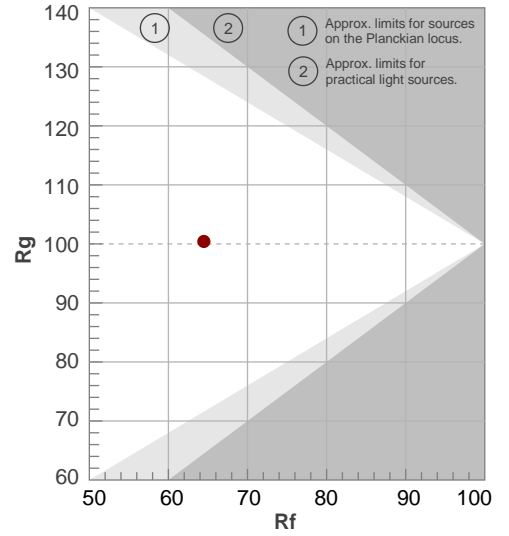
Beam angle 50%	Field angle 10%	Cutoff angle 2,5%	Intensity ratio in 120° cone	Intensity ratio in 90° cone
46,7°	132,7°	157,4°	42,7%	24,1%

TM30 details

Rf 64,5
Fidelity index Rf

Rg 100,4
Gammut index Rg

Hue Bin	R _f	Graphic shifts (%)	
		Chroma	Hue
1	67	-15%	-6%
2	74	-13%	9%
3	51	-5%	26%
4	49	11%	27%
5	50	23%	18%
6	71	19%	2%
7	72	11%	-13%
8	66	-3%	-18%
9	75	-15%	-13%
10	68	-15%	6%
11	53	-10%	22%
12	61	3%	23%
13	76	13%	12%
14	71	15%	0%
15	76	3%	-13%
16	74	-1%	-14%



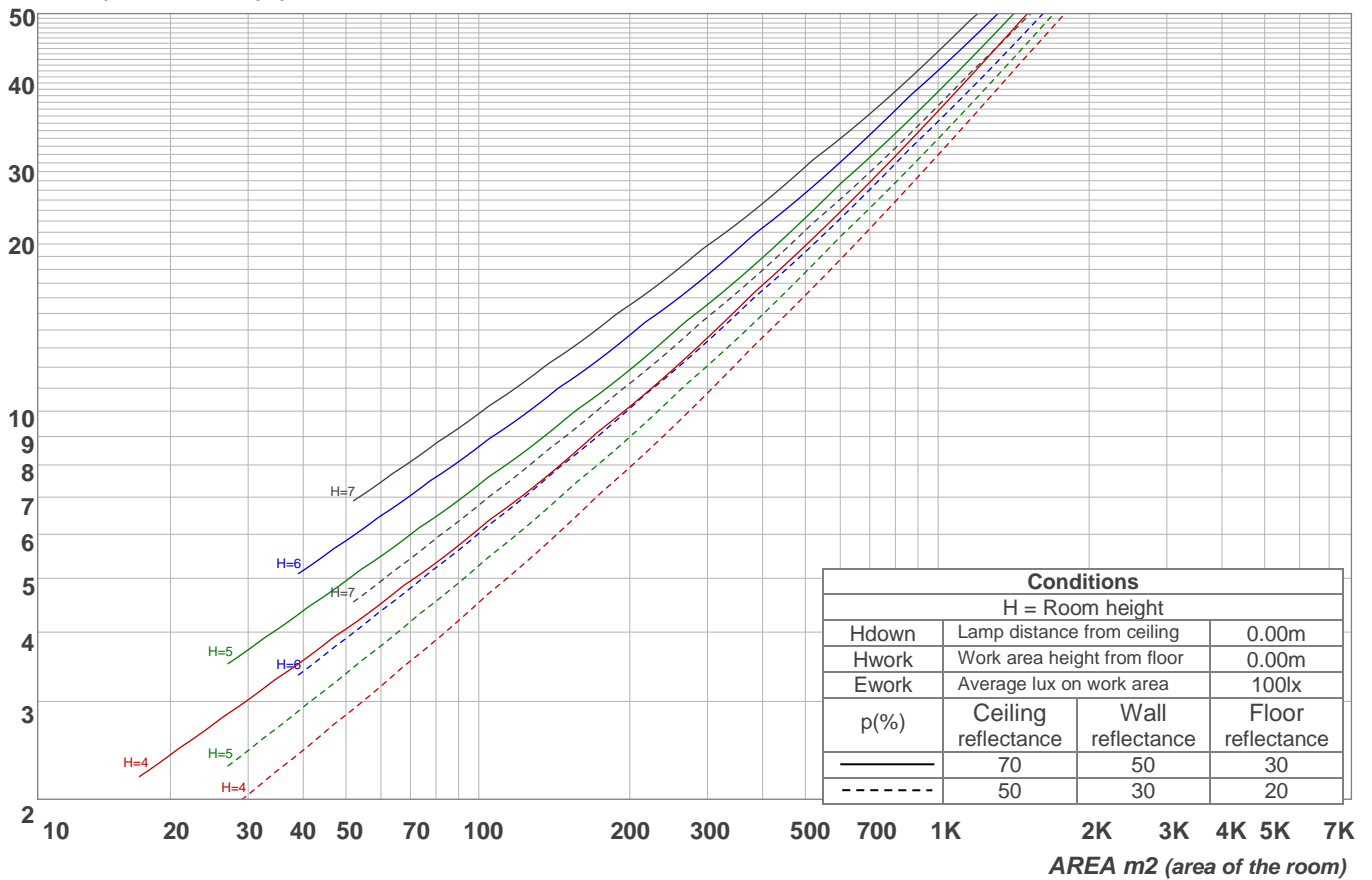
Light planning

Coefficients of Utilization

Ceiling reflectance	80				70				50			30			10			0			
Wall reflectance	70	50	30	10	70	50	30	10	50	30	10	50	30	10	50	30	10	0			
Floor reflectance	20	20	20	20	20	20	20	20	20	20	20	20	20	20	20	20	20	20	20	20	0
RCR	(RCR: Room Cavity Ratio)																				
	Room Values are expressed as percentage of Lumens delivered to the task surface																				
0	119	119	119	119	116	116	116	116	111	111	111	106	106	106	102	102	102	100	100		
1	104	97	90	85	100	94	88	83	90	85	80	85	81	78	82	78	75	73	73		
2	90	78	69	61	87	76	67	60	72	65	58	69	62	57	65	60	55	53	53		
3	79	65	54	45	76	63	53	45	60	51	44	57	49	43	54	47	42	39	39		
4	71	55	44	35	68	54	43	35	51	41	34	48	40	33	46	39	33	30	30		
5	64	48	36	28	61	46	36	28	44	35	27	42	34	27	40	32	27	24	24		
6	58	42	31	23	56	41	31	23	39	30	23	37	29	22	35	28	22	20	20		
7	54	38	27	20	52	37	27	20	35	26	19	33	25	19	32	24	19	17	17		
8	50	34	24	17	48	33	24	17	32	23	17	30	22	17	29	22	16	14	14		
9	46	31	22	15	45	30	21	15	29	21	15	28	20	15	27	20	15	12	12		
10	43	28	19	14	42	28	19	13	27	19	13	26	18	13	25	18	13	11	11		

LAMPS (number of lamps)

Luminaire budgetary diagram

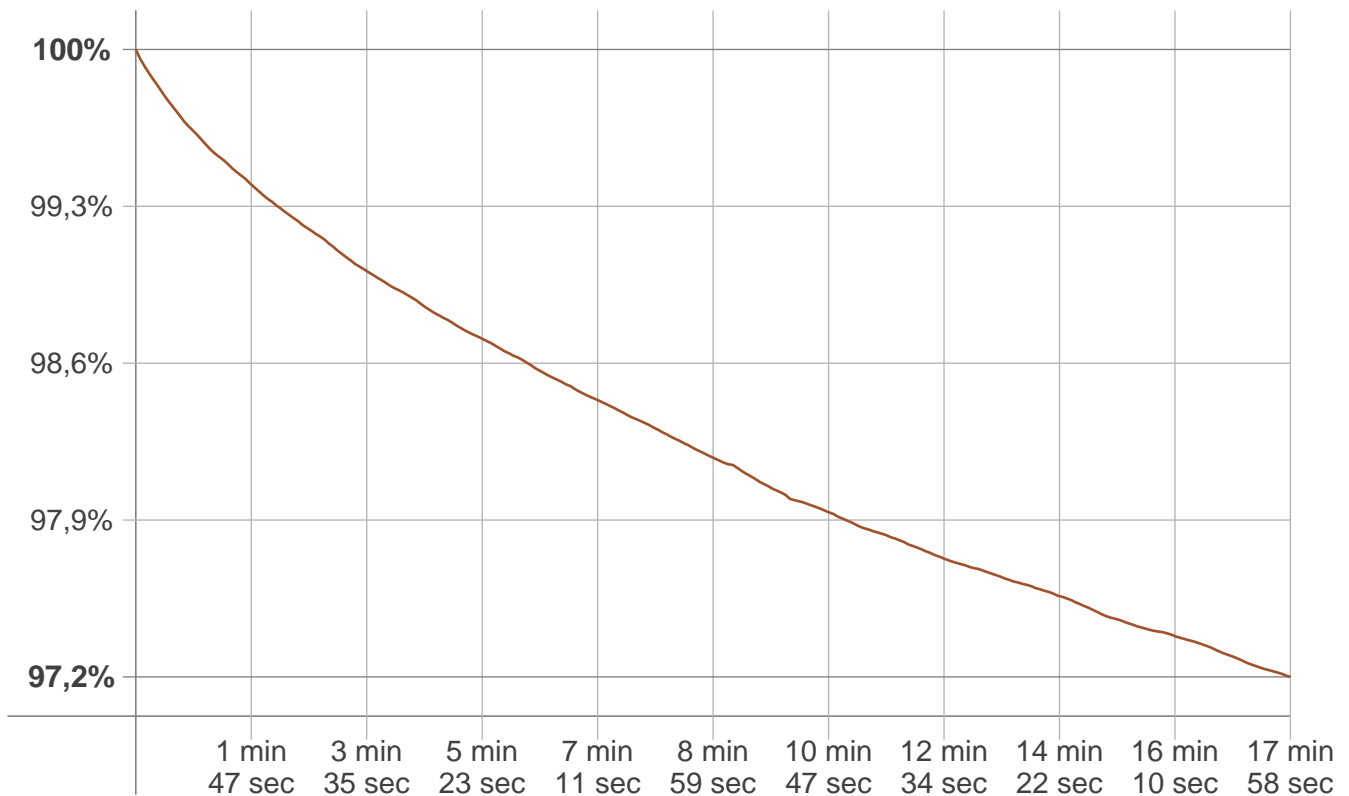


Zonal Lumen Summary

0°-10°	10°-20°	20°-30°	30°-40°	40°-50°	50°-60°	60°-70°	70°-80°	80°-90°
57,3 lm	167 lm	272 lm	317 lm	382 lm	565 lm	1380 lm	779 lm	186 lm
90°-100°	100°-110°	110°-120°	120°-130°	130°-140°	140°-150°	150°-160°	160°-170°	170°-180°
5,95 lm	0,993 lm	0,811 lm	0,729 lm	0,626 lm	0,503 lm	0,366 lm	0,224 lm	0,077 lm

Stabilization

Warmup curve



Warmup result

Warmup time:	17 min 58 sec
Warmup variation	-2,8%

Warmup conditions

Stable period:	15 min
Stable change max:	2,0%
Minimum time:	15 min

Color temperature change

CCT start	CCT change	CCT end
5671 K	-30 K	5641 K

Output change

Output start	Output change	Output end
4229 lm	-114 lm	4115 lm