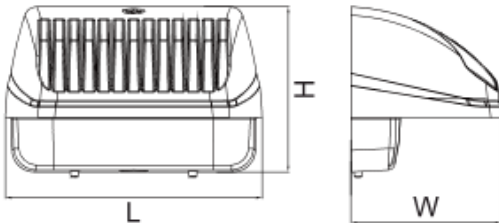




Dimensiones (mm)

Largo (L): 320; **Ancho (W):** 253
Alto (H): 190.



Código

TITÁN-80W

Descripción

Luminaria tipo aplique o "Wall-Pack". Diseñada con módulos de LED, para ubicar en pared. Compuesta por lentes ópticos el cual maximiza la distribución de la luz y un disipador en aluminio inyectado. Cada luminaria esta compuesta por 40 diodos de LED.




Materiales y acabado

Cuerpo en aluminio inyectado.
 Lentes óptico en policarbonato transparente.

Color

Café.

Características técnicas

LED	 Asimétrico	 50,000h	IP 65	IK 08
PF 0,99	THD <10%	°C -25-40	V 100-277	

Fuente de luz

LED.

Potencia de Salida	CRI	K	Lm / W	Lm de Salida
80,2W	>70	5700	118	9441

Características de fuente de luz

- Color temperatura disponible 5700K (frio).
- Protección contra sobretensión incorporado de 4kV.
- Opcional:
 - Fococelda
 - Batería de emergencia
 - Sensor de movimiento.

Nota: Debido a continua investigación, nos reservamos el derecho de cambiar especificaciones sin previa notificación.



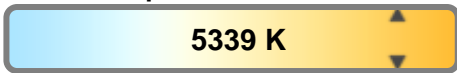
Light efficiency:



Light quality:



Color temperature:



Output: 9441 lm

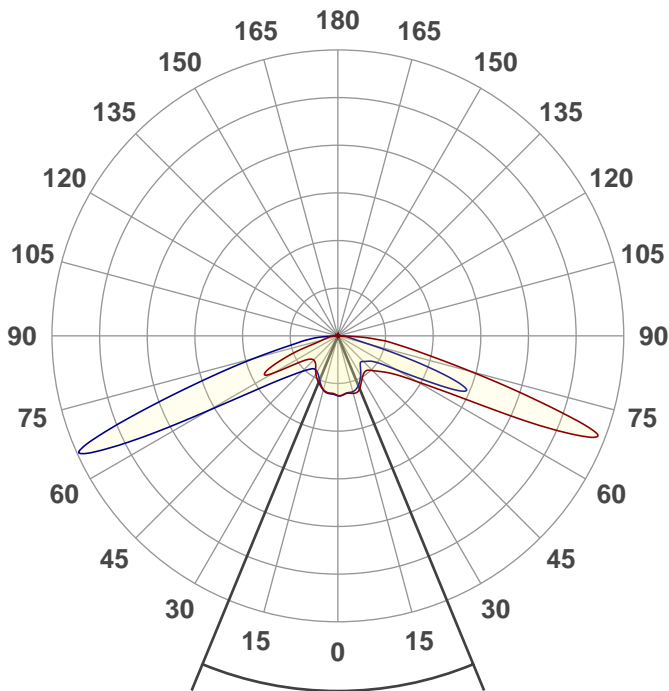
Peak: 6434 cd

Power: 80,3 W

PF: 0,99



Product name:
E0344-TITAN-80W



Beam angle

44,8°



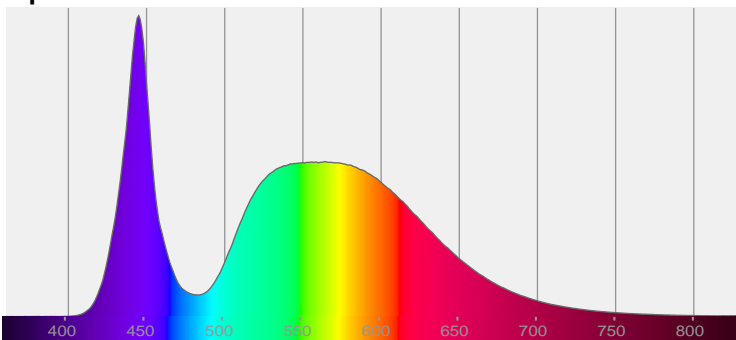
CIE 1931
x: 0,336
y: 0,347

THD Values:

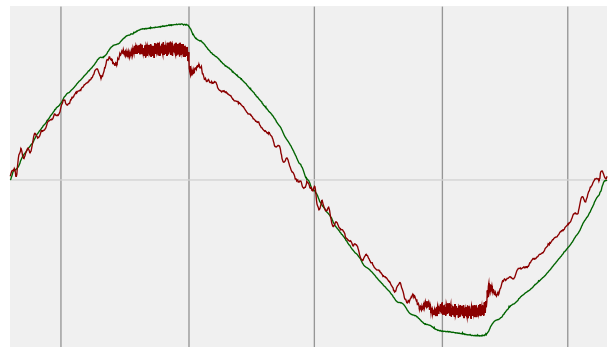
Voltage: 2,82%

Current: 4,08%

Spectra

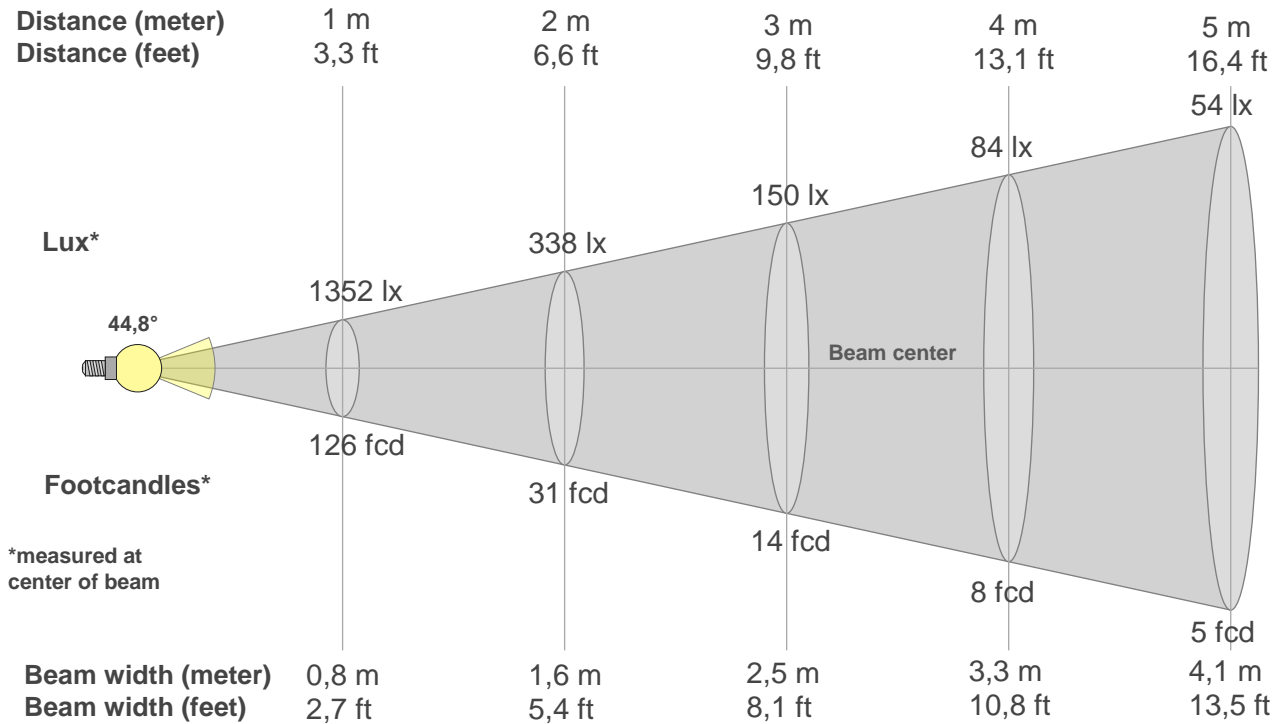


Power



Voltage: 116 V
Current: 0,698 A
Frequency: 60 Hz

Beam details



Beam intensities from 1-20m

1m	2m	3m	4m	5m	6m	7m	8m	9m	10m	11m	12m	13m	14m	15m	16m	17m	18m	19m	20m
3,3ft	6,6ft	9,8ft	13,1ft	16,4ft	19,7ft	23ft	26,2ft	29,5ft	32,8ft	36,1ft	39,4ft	42,7ft	45,9ft	49,2ft	52,5ft	55,8ft	59,1ft	62,3ft	65,6ft
1352lx	338lx	150lx	84lx	54lx	38lx	28lx	21lx	17lx	14lx	11lx	9lx	8lx	7lx	6lx	5lx	5lx	4lx	4lx	3lx
125,6fcd	31,4fcd	14fcd	7,8fcd	5fcd	3,5fcd	2,6fcd	2fcd	1,6fcd	1,3fcd	1fcd	0,9fcd	0,7fcd	0,6fcd	0,6fcd	0,5fcd	0,4fcd	0,4fcd	0,3fcd	0,3fcd

Intensities in 0° c-plane

0°	5°	10°	15°	20°	25°	30°	35°	40°	45°	50°	55°	60°	65°	70°	75°	80°	85°	90°	95°
1352	1343	1318	1348	1338	1226	1105	1029	1022	1112	1257	1487	2075	4181	5999	3127	1647	850	54	4
100%	99%	98%	100%	99%	91%	82%	76%	76%	82%	93%	110%	153%	309%	444%	231%	122%	63%	4%	0%

Intensities in 90° c-plane

0°	5°	10°	15°	20°	25°	30°	35°	40°	45°	50°	55°	60°	65°	70°	75°	80°	85°	90°	95°
1352	1339	1307	1308	1260	1160	1031	895	795	822	895	1034	1548	2845	2543	726	313	178	47	3
100%	99%	97%	97%	93%	86%	76%	66%	59%	61%	66%	77%	115%	210%	188%	54%	23%	13%	3%	0%

Intensities in 180° c-plane

0°	5°	10°	15°	20°	25°	30°	35°	40°	45°	50°	55°	60°	65°	70°	75°	80°	85°	90°	95°
1352	1308	1306	1264	1184	1097	994	876	795	773	820	1025	1685	1665	862	357	239	140	6	4
100%	97%	97%	93%	88%	81%	74%	65%	59%	57%	61%	76%	125%	123%	64%	26%	18%	10%	0%	0%

Intensities in 270° c-plane

0°	5°	10°	15°	20°	25°	30°	35°	40°	45°	50°	55°	60°	65°	70°	75°	80°	85°	90°	95°
1352	1325	1320	1268	1148	1021	939	919	986	1137	1406	1933	3386	6285	4160	1949	945	501	5	3
100%	98%	98%	94%	85%	76%	69%	68%	73%	84%	104%	143%	250%	465%	308%	144%	70%	37%	0%	0%

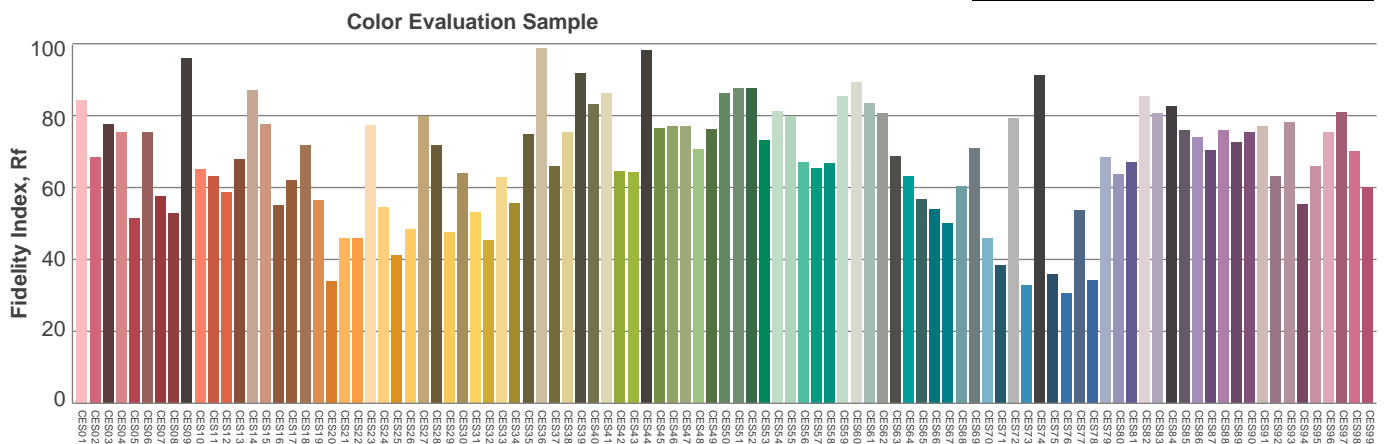
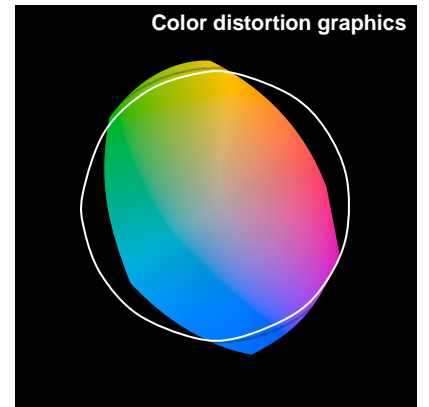
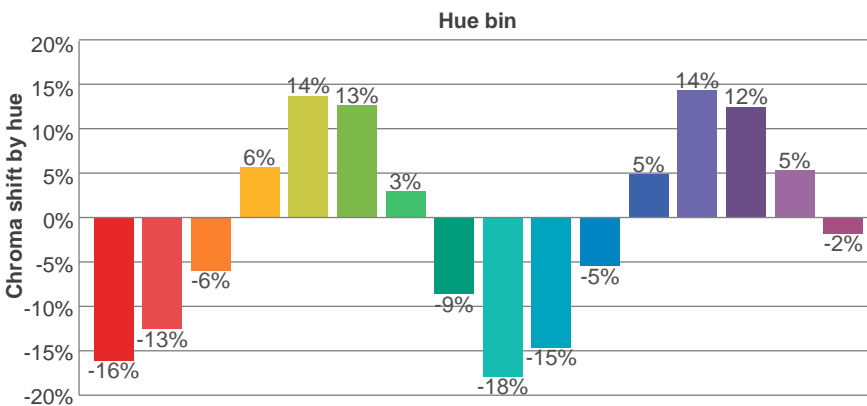
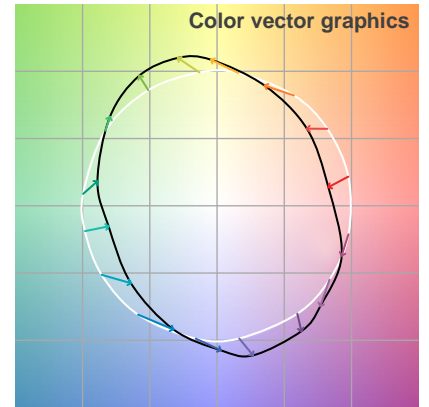
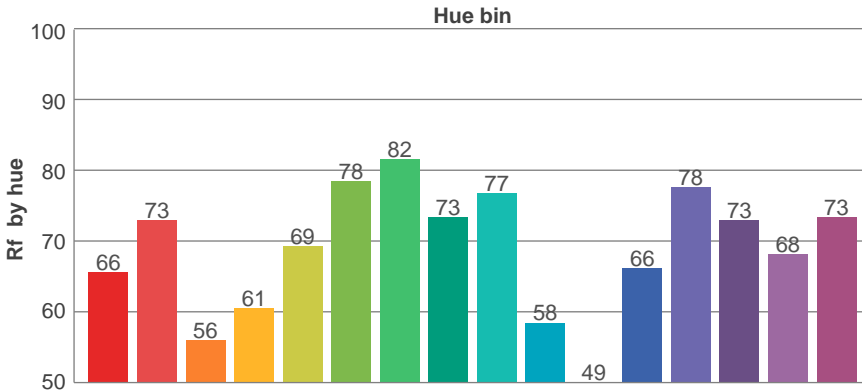
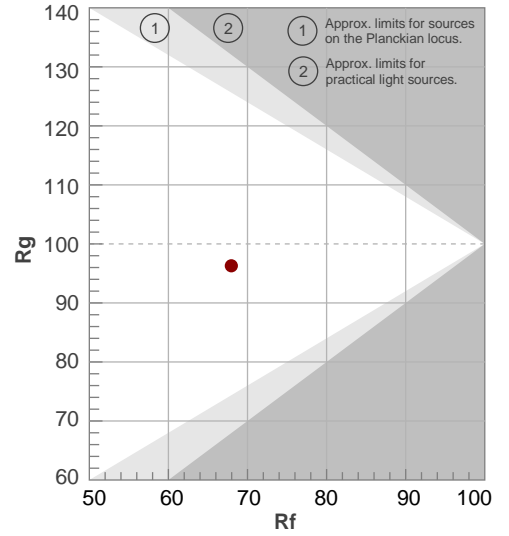
Beam angle 50%	Field angle 10%	Cutoff angle 2,5%	Intensity ratio in 120° cone	Intensity ratio in 90° cone
44,8°	158,1°	172,4°	38,6%	20,6%

TM30 details

Rf 68,0
Fidelity index Rf

Rg 96,3
Gammut index Rg

Hue Bin	R _f	Graphic shifts (%)	
		Chroma	Hue
1	66	-16%	-5%
2	73	-13%	9%
3	56	-6%	22%
4	61	6%	22%
5	69	14%	14%
6	78	13%	0%
7	82	3%	-10%
8	73	-9%	-11%
9	77	-18%	0%
10	58	-15%	17%
11	49	-5%	28%
12	66	5%	20%
13	78	14%	8%
14	73	12%	-5%
15	68	5%	-20%
16	73	-2%	-17%



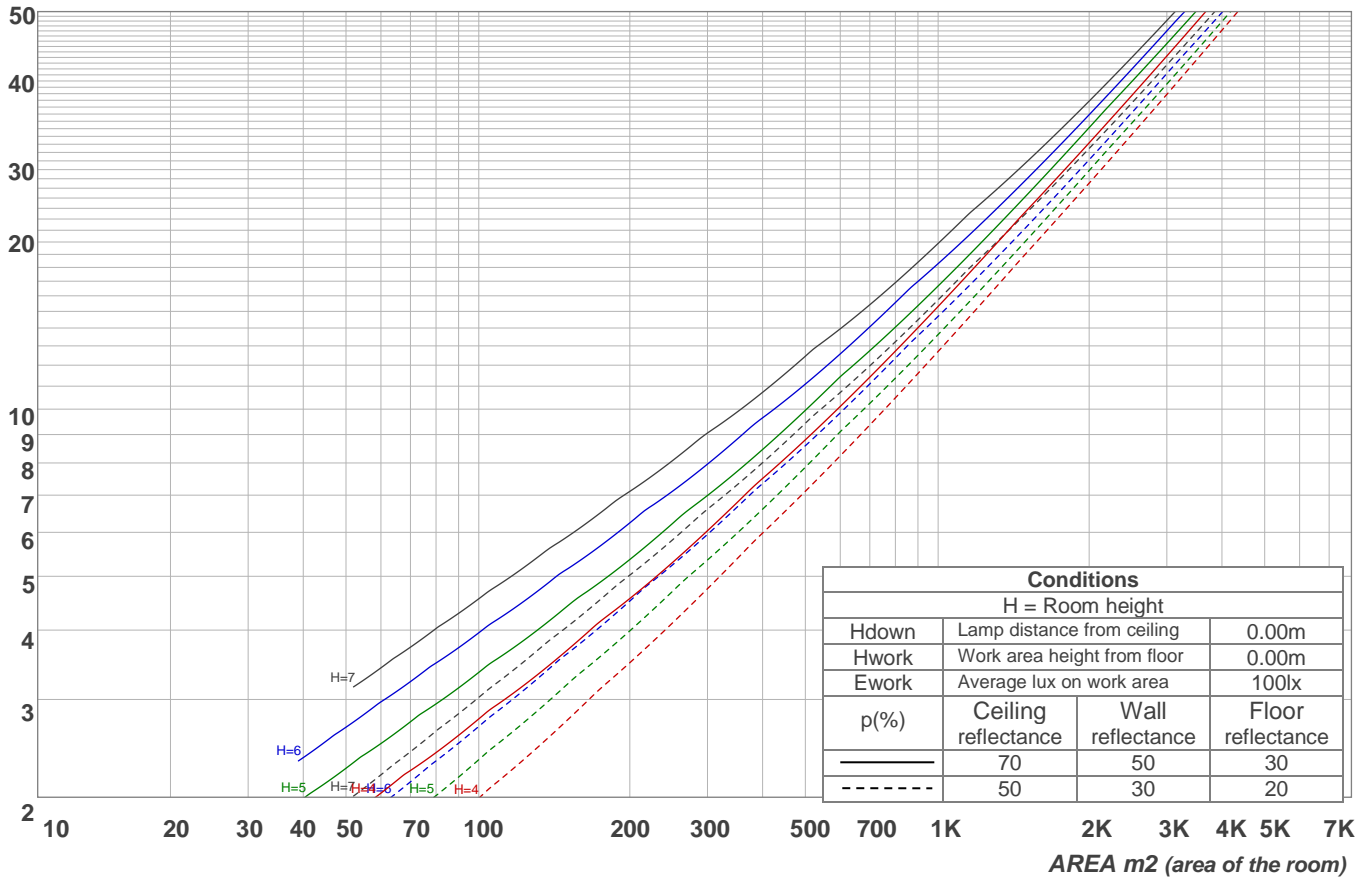
Light planning

Coefficients of Utilization

Ceiling reflectance	80				70				50			30			10			0			
Wall reflectance	70	50	30	10	70	50	30	10	50	30	10	50	30	10	50	30	10	0			
Floor reflectance	20	20	20	20	20	20	20	20	20	20	20	20	20	20	20	20	20	20	20	20	0
RCR	(RCR: Room Cavity Ratio)																				
	Room Values are expressed as percentage of Lumens delivered to the task surface																				
0	119	119	119	119	116	116	116	116	111	111	111	106	106	106	102	102	102	100	100		
1	103	96	89	83	100	93	87	82	89	84	79	85	80	77	81	77	74	72	72		
2	89	77	67	59	86	75	66	58	71	63	56	67	61	55	64	58	54	51	51		
3	78	63	52	43	75	62	51	42	58	49	42	55	47	41	52	45	40	37	37		
4	69	53	42	33	67	52	41	32	49	39	32	46	38	31	44	37	31	28	28		
5	63	46	35	26	60	45	34	26	42	33	25	40	32	25	38	31	24	22	22		
6	57	41	29	21	55	39	29	21	37	28	21	35	27	21	34	26	20	18	18		
7	53	36	25	18	51	35	25	18	33	24	18	32	24	17	30	23	17	15	15		
8	49	33	23	16	47	32	22	15	30	22	15	29	21	15	28	20	15	13	13		
9	45	30	20	14	44	29	20	14	28	19	13	27	19	13	25	18	13	11	11		
10	43	27	18	12	41	27	18	12	26	18	12	25	17	12	24	17	12	10	10		

LAMPS (number of lamps)

Luminaire budgetary diagram

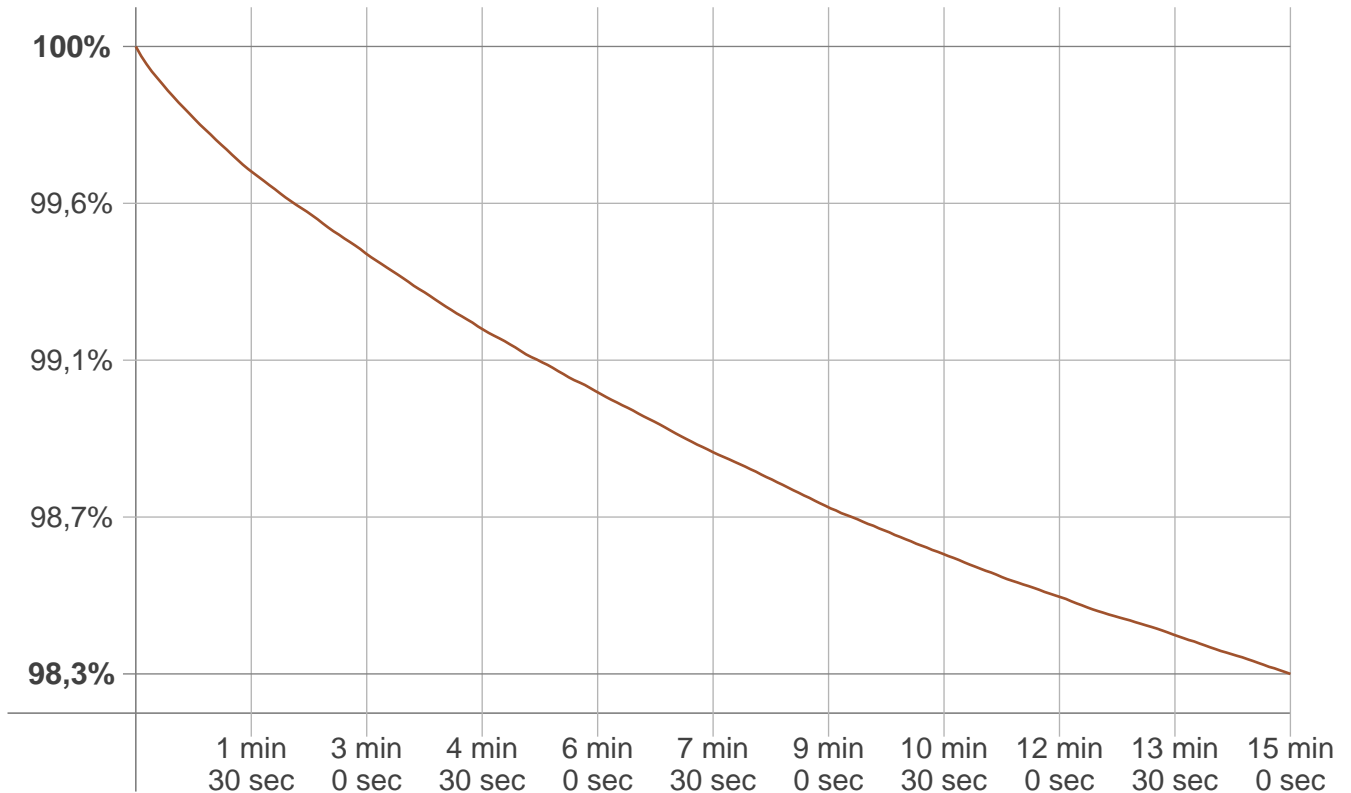


Zonal Lumen Summary

0°-10°	10°-20°	20°-30°	30°-40°	40°-50°	50°-60°	60°-70°	70°-80°	80°-90°
126 lm	365 lm	519 lm	590 lm	754 lm	1290 lm	3349 lm	2010 lm	416 lm
90°-100°	100°-110°	110°-120°	120°-130°	130°-140°	140°-150°	150°-160°	160°-170°	170°-180°
5,97 lm	3,52 lm	3,23 lm	3,02 lm	2,54 lm	2,07 lm	1,51 lm	0,904 lm	0,310 lm

Stabilization

Warmup curve



Warmup result

Warmup time:	15 min 0 sec
Warmup variation	-1,7%

Warmup conditions

Stable period:	15 min
Stable change max:	2,0%
Minimum time:	15 min

Color temperature change

CCT start	CCT change	CCT end
5338 K	+1 K	5339 K

Output change

Output start	Output change	Output end
9599 lm	-158 lm	9441 lm