

Luminaria para exterior

Código

WL545B

Descripción

Luminaria tipo aplique, diseñada con COB de LED integrado. Compuesta en la parte interna por un óptico en aluminio especular y un vidrio templado.




Materiales y acabado

Cuerpo en aluminio con acabado en pintura poliéster electrostática texturizada.

Color

Negro.

Características técnicas

LED	 36°	 30,000h	IP 65	IK 07
PF 0,76	THD <10%	°C 0-55	V 110-230	

Fuente de luz

COB de LED.

Potencia Nominal	CRI	K	Lm / W	Lm de Salida
------------------	-----	---	--------	--------------

30W	>80	4000	100	2887
-----	-----	------	-----	------

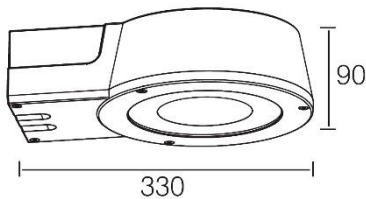
Características de fuente de luz

- Color temperatura disponible 4000K (neutro).
- Marca LED: BRIDGELUX. Marca Driver: AREEK.
- Potencia de Salida: 28,9W.



Dimensiones (mm)

Ancho: 90
Alto: 330.



Light efficiency:



Light quality:



Color temperature:



Output: 2887 lm

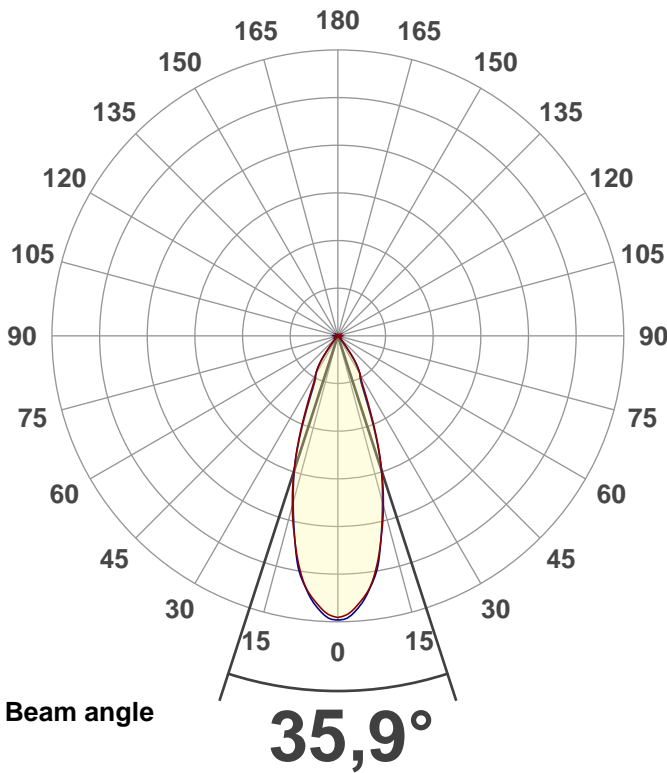
Peak: 6875 cd

Power: 28,9 W

PF: 0,76



Product name:
E0093-WL545B



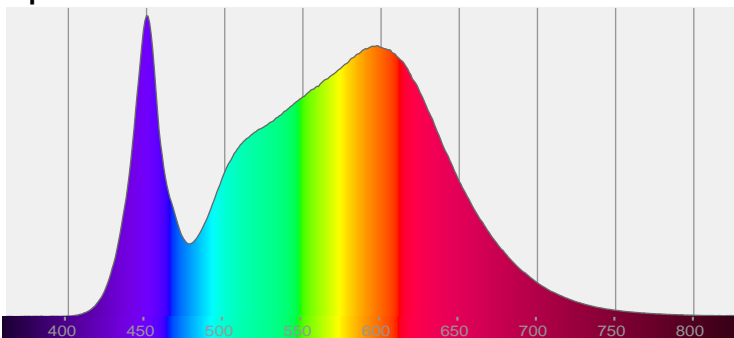
CIE 1931
x: 0,379
y: 0,377

THD Values:

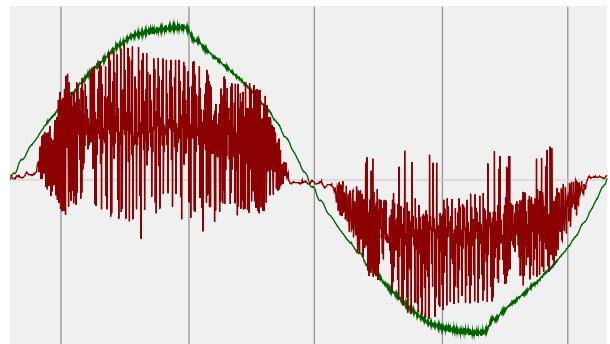
Voltage: 2,81%

Current: 14,41%

Spectra

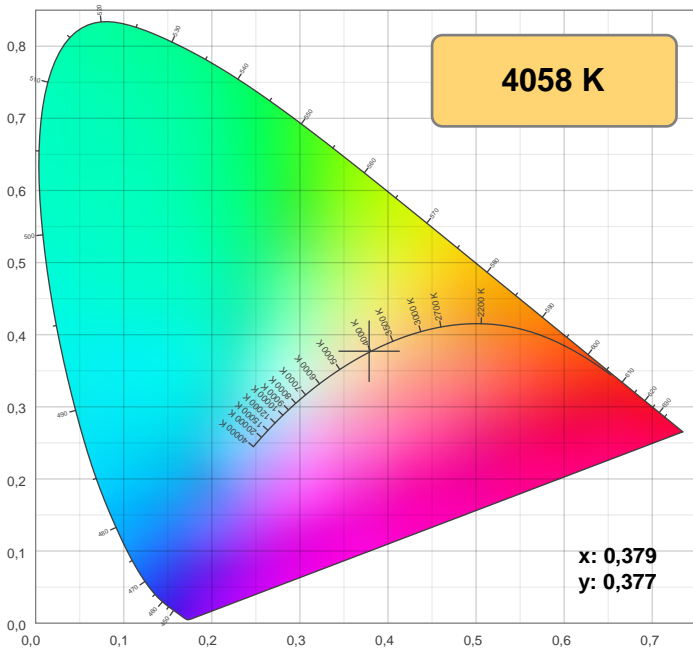


Power



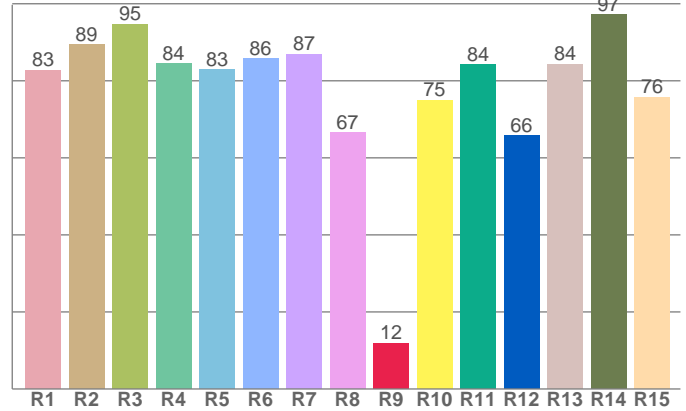
Voltage: 113 V
Current: 0,336 A
Frequency: 60 Hz

Color details



CIE 1931

CRI: 84,1 (R1-R8)

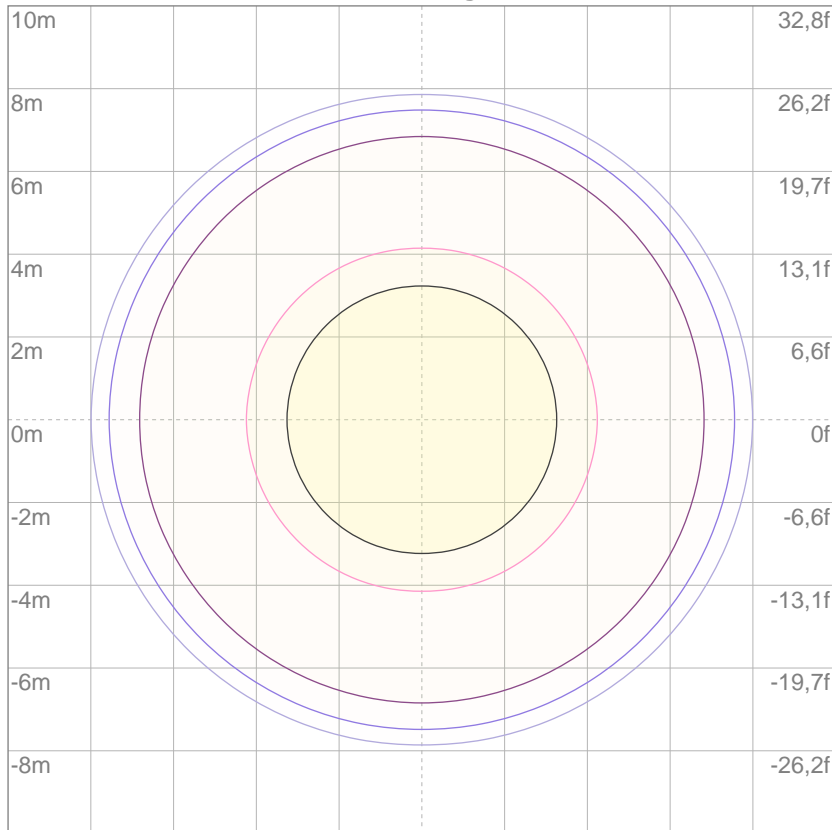


CRI R values, only R1-R8 are used to calculate final CRI value

R1	R2	R3	R4	R5	R6	R7	R8	9	R10	R11	R12	R13	R14	R15
82,7	89,3	94,6	84,4	82,9	85,7	86,9	66,5	11,9	75,0	84,2	65,8	84,3	97,1	75,7

ISO Diagrams

ISO lux diagram



Mounting height: 10 meters (33 f)

3%	2,05 lx
5%	3,42 lx
10%	6,84 lx
30%	20,5 lx
50%	34,2 lx

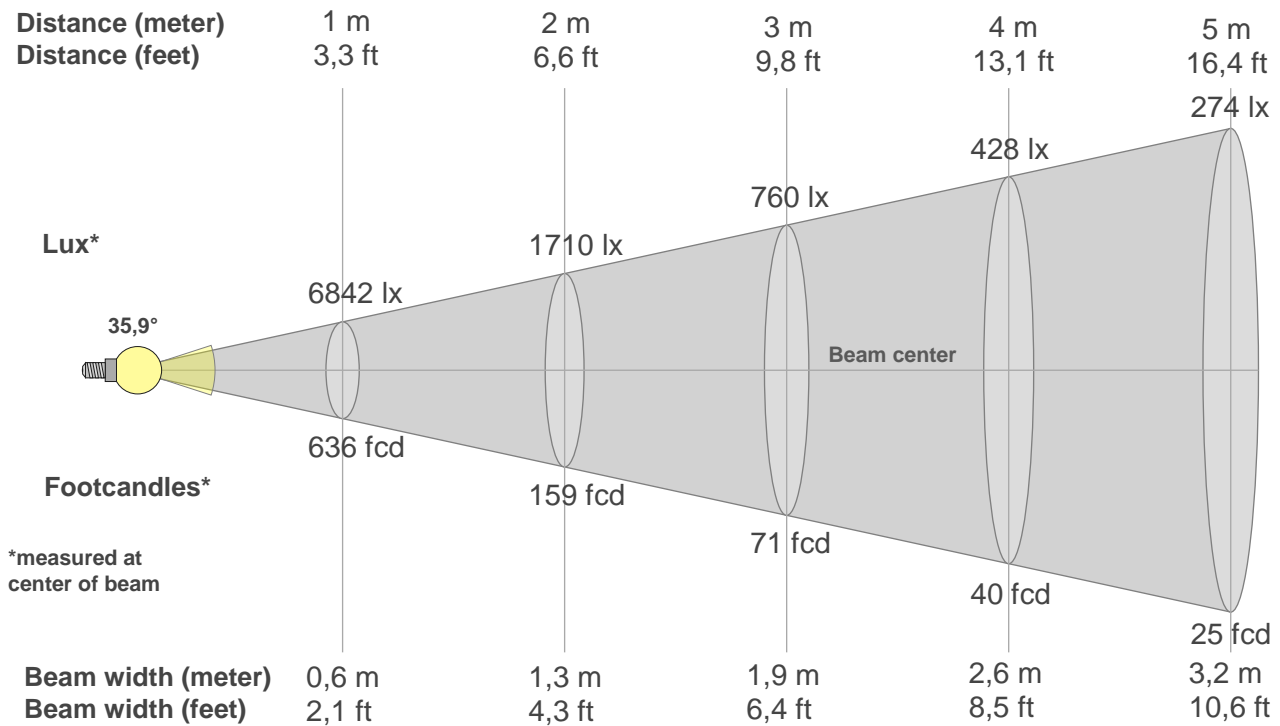
Conditions:

Number of c-planes: 4

Lux at center: 68,4 lx

Lux distribution on a surface when lamp is mounted at 10 meters from the surface.

Beam details



Beam intensities from 1-20m

1m	2m	3m	4m	5m	6m	7m	8m	9m	10m	11m	12m	13m	14m	15m	16m	17m	18m	19m	20m
3,3ft	6,6ft	9,8ft	13,1ft	16,4ft	19,7ft	23ft	26,2ft	29,5ft	32,8ft	36,1ft	39,4ft	42,7ft	45,9ft	49,2ft	52,5ft	55,8ft	59,1ft	62,3ft	65,6ft
6842lx	1710lx	760lx	428lx	274lx	190lx	140lx	107lx	84lx	68lx	57lx	48lx	40lx	35lx	30lx	27lx	24lx	21lx	19lx	17lx
635,6fcd	158,9fcd	70,6fcd	39,7fcd	25,4fcd	17,7fcd	13fcd	9,9fcd	7,8fcd	6,4fcd	5,3fcd	4,4fcd	3,8fcd	3,2fcd	2,8fcd	2,5fcd	2,2fcd	2fcd	1,8fcd	1,6fcd

Intensities in 0° c-plane

0°	2°	4°	6°	8°	10°	12°	14°	16°	18°	20°	22°	24°	26°	28°	30°	32°	34°	36°	38°
6842	6740	6550	6316	5997	5545	5025	4520	3988	3435	2865	2304	1822	1456	1207	1073	903	714	462	260
100%	99%	96%	92%	88%	81%	73%	66%	58%	50%	42%	34%	27%	21%	18%	16%	13%	10%	7%	4%

Intensities in 90° c-plane

0°	2°	4°	6°	8°	10°	12°	14°	16°	18°	20°	22°	24°	26°	28°	30°	32°	34°	36°	38°
6842	6827	6632	6366	6025	5612	5015	4444	3914	3397	2819	2202	1673	1323	1148	1064	928	735	452	219
100%	100%	97%	93%	88%	82%	73%	65%	57%	50%	41%	32%	24%	19%	17%	16%	14%	11%	7%	3%

Intensities in 180° c-plane

0°	2°	4°	6°	8°	10°	12°	14°	16°	18°	20°	22°	24°	26°	28°	30°	32°	34°	36°	38°
6842	6740	6550	6316	5997	5545	5025	4520	3988	3435	2865	2304	1822	1456	1207	1073	903	714	462	260
100%	99%	96%	92%	88%	81%	73%	66%	58%	50%	42%	34%	27%	21%	18%	16%	13%	10%	7%	4%

Intensities in 270° c-plane

0°	2°	4°	6°	8°	10°	12°	14°	16°	18°	20°	22°	24°	26°	28°	30°	32°	34°	36°	38°
6842	6827	6632	6366	6025	5612	5015	4444	3914	3397	2819	2202	1673	1323	1148	1064	928	735	452	219
100%	100%	97%	93%	88%	82%	73%	65%	57%	50%	41%	32%	24%	19%	17%	16%	14%	11%	7%	3%

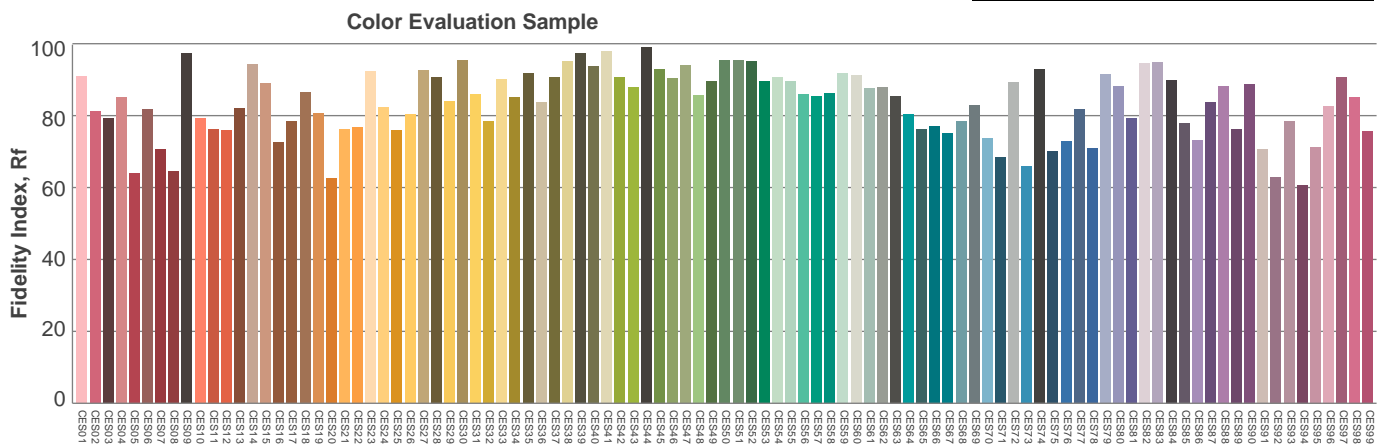
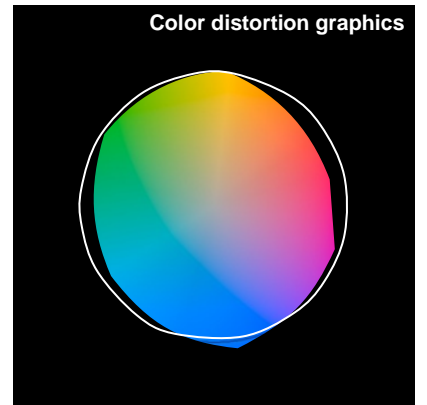
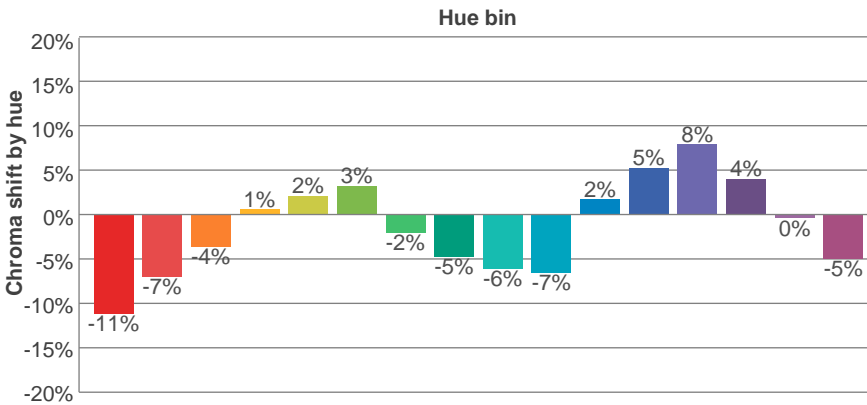
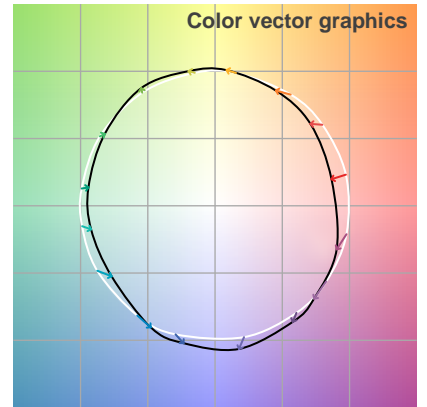
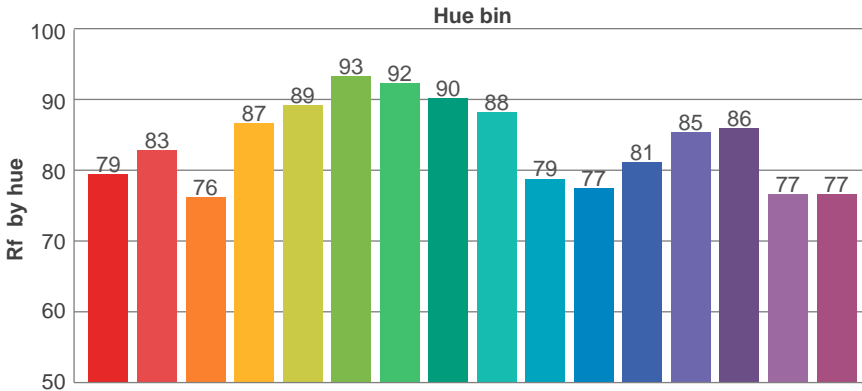
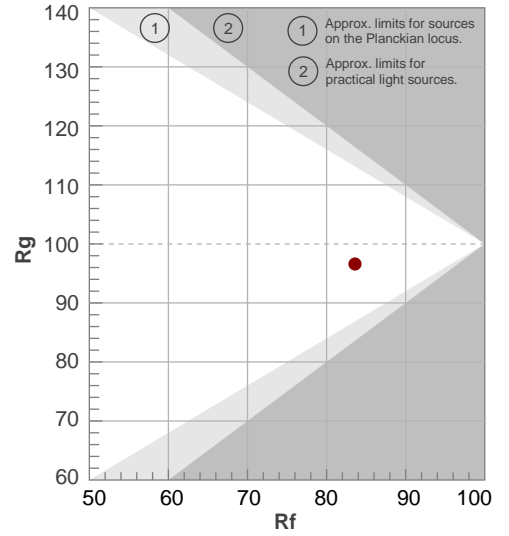
Beam angle 50%	Field angle 10%	Cutoff angle 2,5%	Intensity ratio in 120° cone	Intensity ratio in 90° cone
35,9°	68,7°	77,6°	99,7%	99,4%

TM30 details

Rf 83,6
Fidelity index Rf

Rg 96,6
Gammut index Rg

Hue Bin	R _f	Graphic shifts (%)	
		Chroma	Hue
1	79	-11%	-1%
2	83	-7%	5%
3	76	-4%	11%
4	87	1%	7%
5	89	2%	4%
6	93	3%	-1%
7	92	-2%	-4%
8	90	-5%	-2%
9	88	-6%	4%
10	79	-7%	9%
11	77	2%	13%
12	81	5%	7%
13	85	8%	-5%
14	86	4%	-6%
15	77	0%	-16%
16	77	-5%	-12%



UGR

Glare Evaluation According to UGR

p Ceiling	70	70	50	50	30	70	70	50	50	30	
p Walls	50	30	50	30	30	50	30	50	30	30	
p Floor	20	20	20	20	20	20	20	20	20	20	
Room size X Y	Viewing direction at right angles to lamp axis					Viewing direction parallel to lamp axis					
2H	2H	17,5	18,1	17,8	18,3	18,5	17,6	18,2	17,9	18,4	18,6
	3H	17,4	18,0	17,7	18,2	18,4	17,5	18,1	17,8	18,3	18,5
	4H	17,3	17,8	17,6	18,1	18,4	17,4	18,0	17,7	18,2	18,5
	6H	17,2	17,7	17,6	18,0	18,3	17,3	17,8	17,7	18,1	18,4
	8H	17,2	17,7	17,5	18,0	18,3	17,3	17,8	17,6	18,1	18,4
	12H	17,2	17,6	17,5	17,9	18,2	17,3	17,7	17,6	18,0	18,3
4H	2H	17,3	17,8	17,6	18,1	18,4	17,4	18,0	17,7	18,2	18,5
	3H	17,2	17,6	17,5	17,9	18,2	17,3	17,7	17,6	18,0	18,3
	4H	17,1	17,5	17,5	17,8	18,2	17,2	17,6	17,6	17,9	18,3
	6H	17,0	17,3	17,4	17,7	18,1	17,1	17,4	17,5	17,8	18,2
	8H	17,0	17,3	17,4	17,6	18,0	17,1	17,4	17,5	17,7	18,1
	12H	16,9	17,2	17,4	17,6	18,0	17,0	17,3	17,5	17,7	18,1
8H	4H	17,0	17,3	17,4	17,6	18,0	17,1	17,4	17,5	17,7	18,1
	6H	16,9	17,1	17,3	17,5	18,0	17,0	17,2	17,4	17,6	18,1
	8H	16,8	17,0	17,3	17,5	17,9	16,9	17,1	17,4	17,6	18,0
	12H	16,8	16,9	17,3	17,4	17,9	16,9	17,0	17,4	17,5	18,0
12H	4H	16,9	17,2	17,4	17,6	18,0	17,0	17,3	17,5	17,7	18,1
	6H	16,8	17,0	17,3	17,5	17,9	16,9	17,1	17,4	17,6	18,0
	8H	16,8	16,9	17,3	17,4	17,9	16,9	17,0	17,4	17,5	18,0
Variation of the observer position for the luminaire distance S											
S = 1,0H	+6,3 / -19,3					+6,3 / -19,8					
S = 1,5H	+9,1 / -20,4					+9,1 / -21,0					
S = 2,0H	+11,1 / -21,1					+11,1 / -21,5					
Standard table	BK00					BK00					
Correction summand	-1,2					-1,1					
Corrected glare indices referring to 2887 lm total luminous flux											

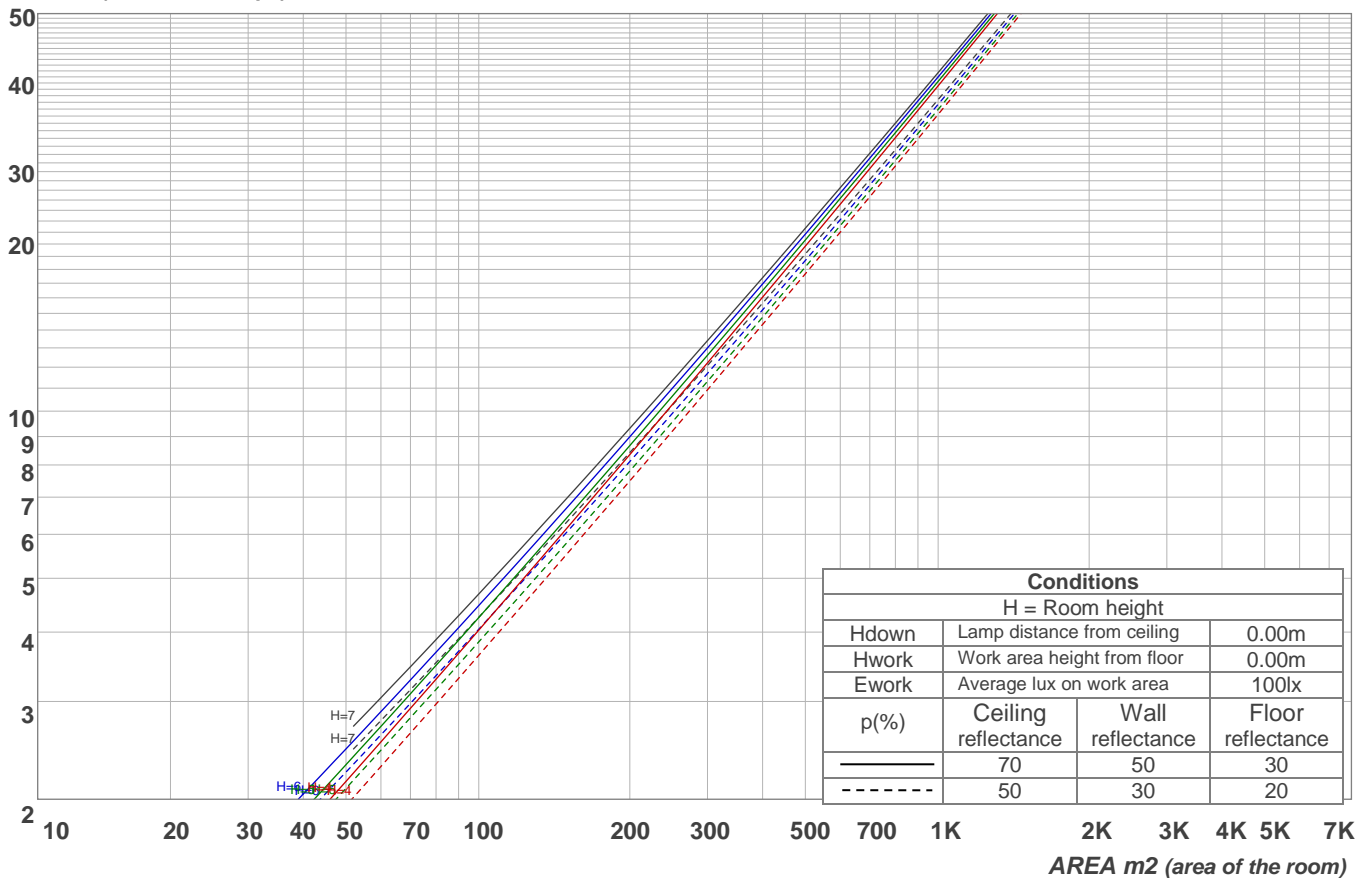
Light planning

Coefficients of Utilization

Ceiling reflectance	80				70				50			30			10			0
Wall reflectance	70	50	30	10	70	50	30	10	50	30	10	50	30	10	50	30	10	0
Floor reflectance	20	20	20	20	20	20	20	20	20	20	20	20	20	20	20	20	20	0
RCR	(RCR: Room Cavity Ratio)																	
	Room Values are expressed as percentage of Lumens delivered to the task surface																	
0	119	119	119	119	116	116	116	116	111	111	111	106	106	106	102	102	102	100
1	114	112	110	108	112	110	108	106	106	104	103	102	101	100	99	98	97	95
2	110	106	102	99	108	104	101	98	101	98	96	98	96	94	95	93	92	90
3	105	100	96	93	104	99	95	92	96	93	90	94	91	89	92	89	88	86
4	101	95	90	87	100	94	90	86	92	88	85	90	87	84	88	85	83	82
5	97	90	86	82	96	89	85	82	88	84	81	86	83	80	85	82	79	78
6	94	86	81	78	92	85	81	77	84	80	77	83	79	76	81	78	76	75
7	90	82	77	74	89	82	77	74	81	76	73	79	76	73	78	75	73	71
8	87	79	74	70	86	78	74	70	77	73	70	76	72	70	75	72	69	68
9	84	76	71	67	83	75	70	67	74	70	67	73	70	67	73	69	67	65
10	81	73	68	65	80	72	68	64	71	67	64	71	67	64	70	66	64	63

LAMPS (number of lamps)

Luminaire budgetary diagram

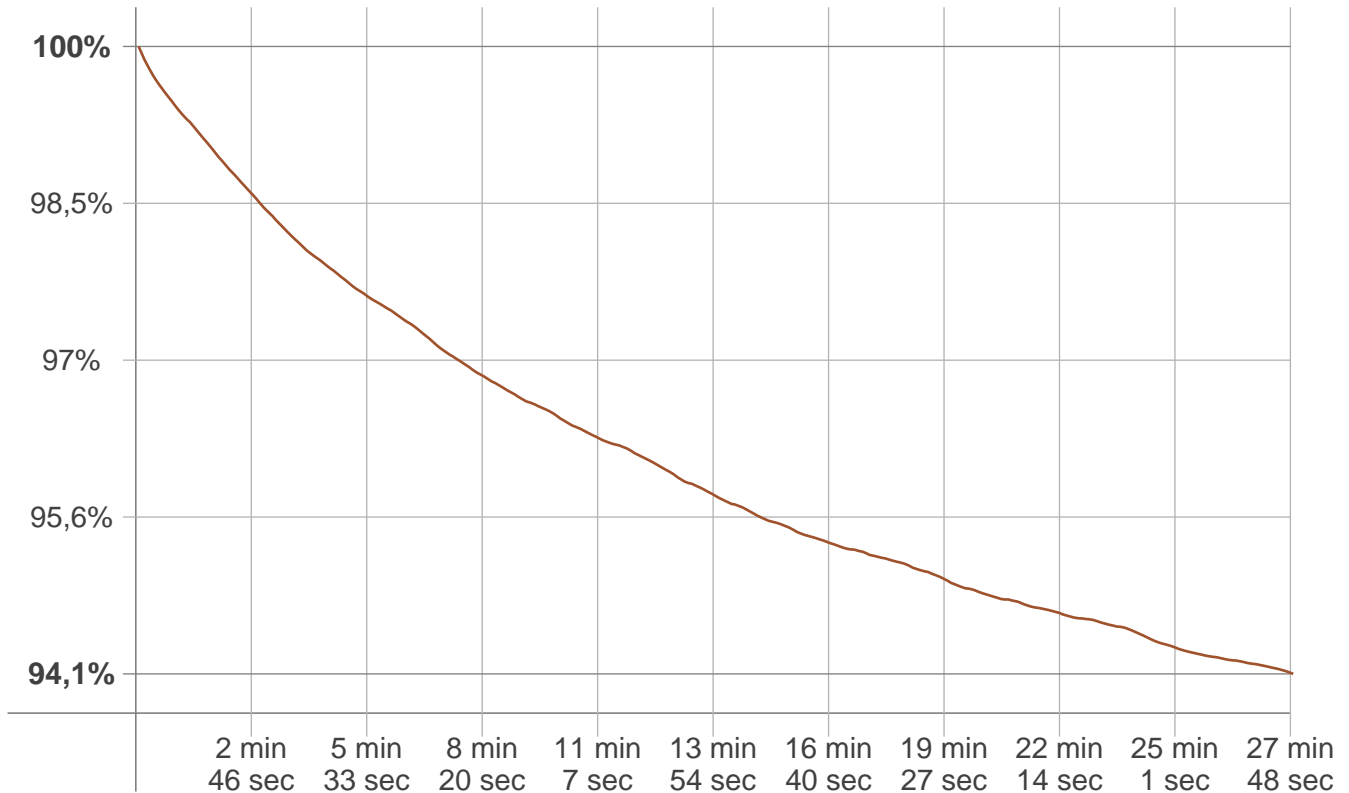


Zonal Lumen Summary

0°-10°	10°-20°	20°-30°	30°-40°	40°-50°	50°-60°	60°-70°	70°-80°	80°-90°
590 lm	1154 lm	759 lm	352 lm	18,3 lm	3,62 lm	1,51 lm	0,763 lm	0,341 lm
90°-100°	100°-110°	110°-120°	120°-130°	130°-140°	140°-150°	150°-160°	160°-170°	170°-180°
0,288 lm	0,324 lm	0,403 lm	0,634 lm	1,04 lm	1,41 lm	1,42 lm	0,921 lm	0,286 lm

Stabilization

Warmup curve



Warmup result

Warmup time:	27 min 52 sec
Warmup variation	-6,0%

Warmup conditions

Stable period:	15 min
Stable change max:	2,0%
Minimum time:	15 min

Color temperature change

CCT start	CCT change	CCT end
4047 K	+11 K	4058 K

Output change

Output start	Output change	Output end
3060 lm	-173 lm	2887 lm